

DPRO-AD940 Invisible IR CCTV Camera

Weatherproof & Vandal Proof Dome with 940nm Infrared LEDs

The DPRO-AD940 is an indoor / outdoor dome CCTV camera with 940nm invisible IR LEDs. This surveillance camera has a **2.8 to 12mm Varifocal lens** which allows installers to adjust the field of view / zoom level during installation. The 1/3" Sony 960H Super HAD CCD II High image sensor supports **700 TVL resolution Color in (day) and B&W (night)** modes. The AD940 features a strong vandal resistant and IP67 rated weatherproof dome housing.



The AD940 offers **superior low light** video surveillance performance down to **0.00004 LUX** before activating its "SMART IR" INFRARED mode. The AD940 IR is capable of capturing images **up to 25 to 30 Meters / 80 to 90 feet away** in zero light conditions, furthermore, the IR LEDs are totally invisible, which can give away camera's position in zero light.

DPRO-AD940 Key Features

DC Auto Iris Lens with **2.8 to 12mm Varifocal Lens**

700 TVL resolution in Color & night vision mode

Outdoor **weatherproof rating of IP67**, ensures camera will hold up in harsh weather

SENS-UP setting, also known as intensifier, can be adjusted to enhance low-light surveillance

Infrared LEDs for illumination **up to 30 meters / 90 feet** (IR LEDs Varifocal 30 pcs)

The AD940 LEDs use **940nm infrared LEDs**, which do not emit a red glow

On-Screen Display (OSD) menu, for configurations, accessed via a small joystick behind the lens

Website Link: For more information, click here: [CCTV DPRO-AD940 Dome Camera](http://www.cctvcamerapros.com/DPRO-AD940-Dome-Camera)

What is OSD?

The OSD stands for **On Screen Display** and allows installers to fine tune a CCTV camera's firmware settings to adjust settings such as: Color, Digital Noise Reduction (DNR), DC iris control, color/black & white, and Back Light Compensation (BLC). For most installations, the camera's factory default settings will work just fine.



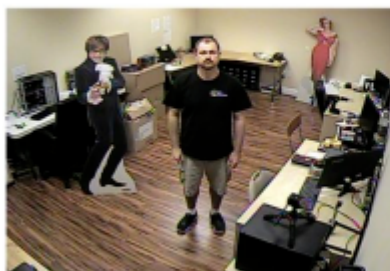
CCTV Camera Pros

Video Surveillance Systems for Home, Business & Government

DPRO-AD940 Features

CCD / Image Device	1/3" Sony 960H Super HAD CCD II High image sensor
Sync System	Internal
Total Pixels	1020 (H) x 508 (V) 520L Pixels (NTSC)
Video Output	1.0V p-p Composite 75 ohm
Scanning System	2:1 Interlaced
Resolution	700 TV Lines in color (day) and B&W (night)
Infrared (IR) Range	Infrared visibility range up to 30 meter / 90 feet in complete darkness (zero light)
940nm LEDs	Contains 30 Infrared IR LEDs
Invisible IR Light	The 940nm Infrared LEDs do not emit any red glow , even in zero light, thus the camera does not give away its location when the infrareds are on.
Minimum Illumination	0.1 Lux during daytime and 0 Lux with IR on
OSD (On Screen Display)	OSD joystick is located behind the camera lens
Backlight Compensation (BLC)	ON / OFF Selectable
S/N Ration / Gamma	50 (Db) / R=0.45
SENS-Up x 256	Ambient light amplification, used to improve nighttime visibility, without IR
Privacy	ON / OFF (12 Zones)
White Balance	ATW
Power Supply	12V-DC 400Ma (Max)
Operating Temperature	Operating Temp: -10°C ~ 45°C / 14°F to 122°F
Dimensions	Dome Height: 3.8" (98mm); Dome Width: 5.31" (135mm).
Weight	Weight: 1.54 LBS. / 0.7 Kilos / 700 Grams
CCTV Camera Pros Website Link	For more information: CCTV DPRO-AD940 Dome Camera

Day and Night Surveillance Image Samples



Color Day Mode



B&W Infrared Night Mode

What does 940nm Infrared mean?

940nm IR LEDs operate at a 940 nanometer frequency which is a light frequency that is not visible to the human eye. 850nm IR LEDs are slightly visible to human eyes. 850nm infrared LEDs emit a red glow and are more typically used on surveillance cameras because they do illuminate areas better than 940nm. This is the trade-off when considering a 940nm vs a 850nm infrared camera.