

GV-NVR System Lite

Introduction

- Support up to 8 units of megapixel GV IP cameras
- Support third-party IP cameras

The GV-NVR System Lite is a light-weight and an ultraslim GV-NVR System, with which you can record video files directly to the internal hard drive. The GV-NVR System Lite supports up to 8 GV IP cameras and/or third-party IP cameras for networking surveillance, with plug-and-play function for GV IP cameras to connect to the unit automatically. The GV-NVR System Lite is an ideal NVR system for small business or retail stores.

Its six USB 2.0 ports enable to connect with multiple peripheral devices, such as USB HDD, USB DVD player and etc. Its Gigabit Ethernet function enables high-speed Internet access for seamless Web browsing. Moreover, our VESA mounting solution allows you to mount the ultra-slim unit on the back of a computer monitor.



The Supported IP Camera Combinations:

The GV-NVR Lite V1.6 supports connections to GV IP cameras and third-party IP cameras. You can adopt one of the following combinations:

- Connect up to 8 GV IP cameras (excluding GV Fisheye Cameras). See **Section A**.
- Connect up to 8 third-party cameras (of 640 x 480 resolution, H.264). See **Section C**.
- Connect up to 6 third-party cameras (of 1280 x 720 resolution, H.264). See **Section C**.
- Connect up to a total of 8 cameras from GV IP cameras (excluding GV Fisheye cameras) and third-party IP cameras (of 640x 480 resolution, H.264). See **Section A and C**.
- Connect up to a total of 4 cameras from GV IP cameras and third-party IP cameras (of 1280 x 720 resolution, H.264). See **Section A and C**.
- Connect one GV Fisheye camera and up to 3 other GV IP cameras. See **Section A and B**.
- Connect one GV Fisheye camera and up to 3 third-party IP cameras (of 640 x 480 resolution, H.264). See **Section B and C**.
- Connect one GV Fisheye camera with up to 3 third-party IP cameras (of 1280 x 720 resolution, H.264). See **Section B and C**.

The number of supported channels is based on the following resolution and codec type:

Section A		Dual Stream Resolution		Max. Frame Rate
		Stream 1 (H.264)	Stream 2 (MPEG4)	
GV IP Camera (excluding GV Fisheye)	GV-PTZ010D-N / GV-SD010 / GV-SD010S NTSC	704 x 480	352 x 240	30 fps
	GV-PTZ010D-P / GV-SD010 / GV-SD010S PAL	704 x 576	352 x 288	25 fps
	GV-BX140DW / GV-MDR140W / GV-MFD140W	1280 x 720	448 x 252	15 fps
	GV-BL110D / GV-BL120D / GV-BL130D / GV-BX110D / GV-BX120D / GV-BX130D / GV-CB120 / GV-FD120D / GV-MDR120 / GV-MFD110D / GV-MFD120 / GV-MFD130 / GV-PT110D / GV-VD120D	1280 x 1024	320 x 256	15 fps
	GV-BL220D / GV-BX220D / GV-CB220 / GV-FD220D / GV-MDR220 / GV-MFD220 / GV-SD220 / GV-VD220D	1920 x 1080	448 x 252	10 fps
	GV-BL320D / GV-BX320D / GV-FD320D / GV-MDR320 / GV-MFD320 / GV-VD320D	2048 x 1536	320 x 240	6 fps
	GV-CR420	2048 x 1536	640 x 480	2 fps
	GV-BX520D / GV-MDR520 / GV-MFD520	2560 x 1920	320 x 240	2 fps
Section B		Single Stream Resolution (H.264)		Max. Frame Rate
GV Fisheye	GV-FE110/111	1280 x 1024 (4:3)		5 fps
	GV-FE420/421	2048 x 1944 (4:3)		2 fps
	GV-FE520/521/GV-FER521	2560 x 1920 (4:3)		2 fps
Section C		Single Stream Resolution (H.264)		Max. Frame Rate
Third-Party Camera		640 x 480		30 fps
		1280 x 720		15 fps

Note:

- For GV IP cameras (excluding GV Fisheye), stream 1 is used for recording and single view, and stream 2 for live viewing in multi divisions.
- The default resolution for stream 1 is set at its maximum. Several resolution, aspect ratio and codec options are available for each IP camera, except GV-Fisheye cameras.
- When connecting GV-FE420 / GV-FE421 / GV-FE520 / GV-FE521 / GV-FER521, it is required to set the screen resolution to 1280 x 1024 or lower to get better CPU performance.
- For third-party cameras, be sure the resolution and codec are configured as specified above to achieve the best performance and maximum frame rate.

Supported GV-NVR Lite Dongle

A GV-NVR Lite Dongle is required to connect to third-party IP cameras. Dongle options: 1, 2, 4, 6 and 8 IP channels

Main Features

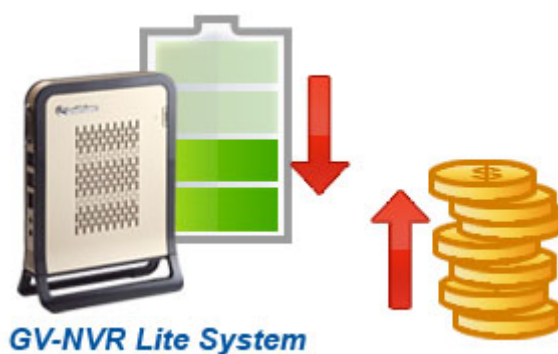
- Support up to 8 channels of megapixel GV IP cameras *
- Support third-party IP cameras *
- Support GPU Decoding
- Compact and slim
- H.264 / MJPEG / MPEG4 supported
- Dual video streams
- Automatic connection to GV IP Cameras
- Video analysis (Advanced Motion Detection, Privacy Mask, Scene Change Detection and Counter)
- All-in-one solution (Live View, Playback, Recording, Backup, CMS)
- Standing mount and VESA mount options
- Pre-installation recovery from the hidden partition
- Direct recording to the internal hard drive
- Low power consumption
- Smart phones access supported (Symbian, Windows Mobile, iPhone, BlackBerry, Android, 3G)
- Fast reboot time (3 minutes) and recovery time (6~8 minutes)
- Multiple (28) languages supported

* **Note:** The feature is only available in GV-NVR System Lite with 2 GB RAM. The previous system with 1 GB RAM only supports up to 4 channels and does not support third-party IP cameras.

A compact yet feature-rich solution, GV-NVR System Lite is equipped with a variety of input and output terminals to provide flexible connection options. The built-in Gigabit Ethernet port enables connection to IP cameras, hubs and routers. Other input and output terminals include D-sub, speaker, microphone and six USB ports.

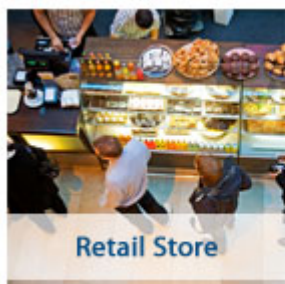


GV-NVR Lite utilizes an energy-efficient Intel processor, which lowers GV-NVR System Lite's energy consumption by up to 50% in comparison to traditional desktop PC.



Applications

Retail Store, Small Business, Home Security and Entrance and Reception Counter.



Retail Store



Small Business



Home Security



Entrance and Reception Counter

- Retail Store
- Small Business
- Home Security
- Entrance and Reception Counter
- CMS (Central Monitoring Station)
 - GV-Control Center
 - GV-Center V2
 - GV-Dispatch Server
 - GV-Vital Sign Monitor
 - GV-GIS
- Smartphones



Symbian



Windows Mobile



Blackberry



iPhone/iPod Touch



3G



Android



iPad

Specifications

System		
CPU		Intel Processor
RAM		2 GB
Storage		500 GB
OS		Microsoft Windows XP Embedded
DirectX		9.0c
Power		Output: 40W, 19V, 2.1A Input: 100~240V, 50~60Hz
Video		
Video Input		4 /6 /8 channels
Compression		MJPEG / MPEG4 / H.264
Live Resolution		CIF for 4 screen divisions
Recording Mode		Round the Clock / Motion Detection / Sensor Detection / Pre & Post Recording / Schedule Recording
Instant Playback		10 sec. / 30 sec. / 1 min. / 5 min.
Pre Recording		1 ~ 90 sec. (1 fps)
Water Marking		Support
Audio		
Audio Input		8 channels
Compression		AAC (16 kHz / 16 bit)
Connector		
Ethernet		RJ-45, 10 / 100 / 1000 Mbps
DVI Output		DVI-D Output
USB 2.0	Right Side	2 ports
	Left Side	4 ports
Searching and Playback		
Search Method		Date / Time
Date / Time / Event Search		Selectable on the tree list and calendar
Log Search		Through the log data to find the video event / time
Backup Type		DVD+R (DL) / DVD-R (DL) / DVD+R / DVD+RW / DVD-R / DVD-RW / CD-R / CD-RW (For backup function, you need to connect an external USB DVD/CD burner.)
Remote Client Software		
Monitoring Environment		WebCam / Twin Server / Center V2 / VSM / Control Center / Remote Playback Server / Remote View / IP Multicast / GView / MSView / SSVIEW / Remote View / 3GPP / AView / iView / iView HD
WebCam Live View		Max. 8 channels transmission
Remote Search		WebCam's Remote Playback / Remote Playback Server
System Monitoring and Recovery		
Power Restoration		Power restored after AC power loss
Monitoring		Software Watchdog
Recovery		Automatic system rebuild from internal hard disk.
System Monitoring and Recovery		
Sensor and Alarm	GV-IO Box 16 ports (Optional)	16 inputs, 16 outputs
	GV-IO Box 8 ports (Optional)	8 inputs, 8 outputs
	GV-IO Box 4 ports (Optional)	4 inputs, 4 outputs
Motion Detection		8 channels
Networking		
Type		TCP/ IP, LAN, WAN, Internet, ISDN
Environment		
Operating Temp		0 °C ~ 35 °C / 32 °F ~ 95 °F
Humidity		0% ~ 80% RH (non-condensing)
Physical		
Color		Champagne gold
Dimensions (W x H x D)		153.5 x 20 x 172.5 mm / 6.04 x 0.79 x 6.79 in
Weight		650 g / 1.44 lbs
Language		
Type		Arabic / Bulgarian / Czech / Danish / Dutch / English / Finland / French / German / Greek / Hebrew / Hungarian / Italian / Japanese / Lithuanian / Norwegian / Polish / Portuguese / Romanian / Russian / Simplified Chinese / Slovakian / Slovenian / Spanish / Sweden / Thai / Traditional Chinese / Turkish

Note: Product design and specifications are subject to change without notice.

Packaging

- GV-NVR System Lite x 1
- AC Power Cord x 1
- Power Adapter x 1
- Base Stand Kit (1 Base Stand Screw included) x 1
- VESA Monitor Mount Kit (1 Stand Screw and 4 Fix Screws included) x 1
- GV-NVR System Lite Quick Start Guide x 1
- Surveillance System Software DVD x 1

Note: The bundled software (no matter pre-installed in the GV-NVR System Lite or included in the Software DVD) is a lite version, specially designed for the GV-NVR System Lite to implement the GV IP cameras:

1. It includes a lite version of video analysis applications, featuring Advanced Motion Detection, Privacy Mask, Scene Change Detection and Counter (for one camera and one detection line) only.
 2. The ViewLog player only supports Single View playback. For Quad View or Multi View playback, you need to additionally install Remote ViewLog from the Software DVD.
-