

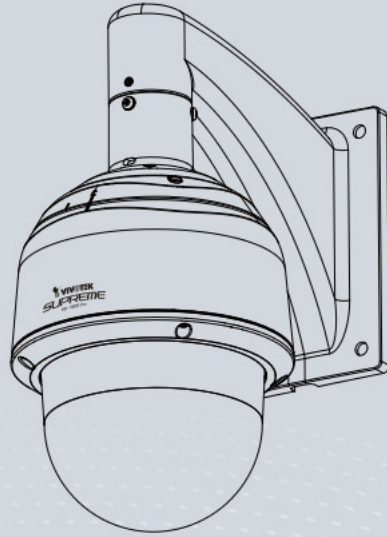


SD83x4E/83x6E Speed Dome
Network Camera

Quick Installation Guide

English | 繁體中文 | 简体中文 | 日本語 | Français | Español | Deutsch | Português | Italiano | Türkçe | Polski | Русский | Český | Svenska | Nederlands
Dansk | Indonesia | العربية

D1 • 18x or 36x Zoom • NEMA 4x • IP66 • Extreme Weatherproof



SUPREME

Warning Before Installation

- Power off the Network Camera as soon as smoke or unusual odors are detected.
- Do not disassemble the Network Camera.
- Do not insert sharp or tiny objects into the Network Camera.
- Do not manually pan and tilt the Network Camera when the power is on.
- Refer to your user's manual for the operating temperature.
- Do not touch the Network Camera during a lightning storm.
- Do not drop the Network Camera.

1 Package Contents

● SD83x4E/83x6E



● Screws / Alignment Sticker / T25 Stardriver / Desiccant Bags



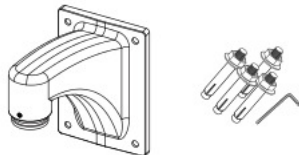
● Quick Installation Guide



● Software CD / Warranty Card



● Wall Mount Bracket / Screws



● Waterproof Connectors / Terminal Blocks / Ethernet Cable / Ground Wire



● PC/ABS / Smoked Dome Cover / IO Cable (Separately Purchased)

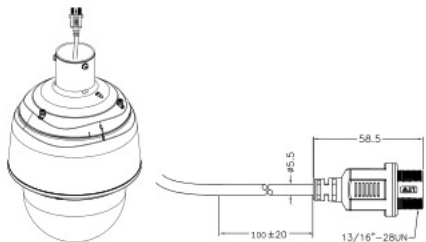


3 Hardware Installation

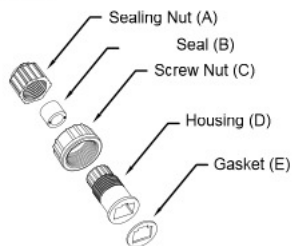
3-1. Connecting RJ45 Ethernet Cable

● RJ45 Cable Dimension (unit: mm)

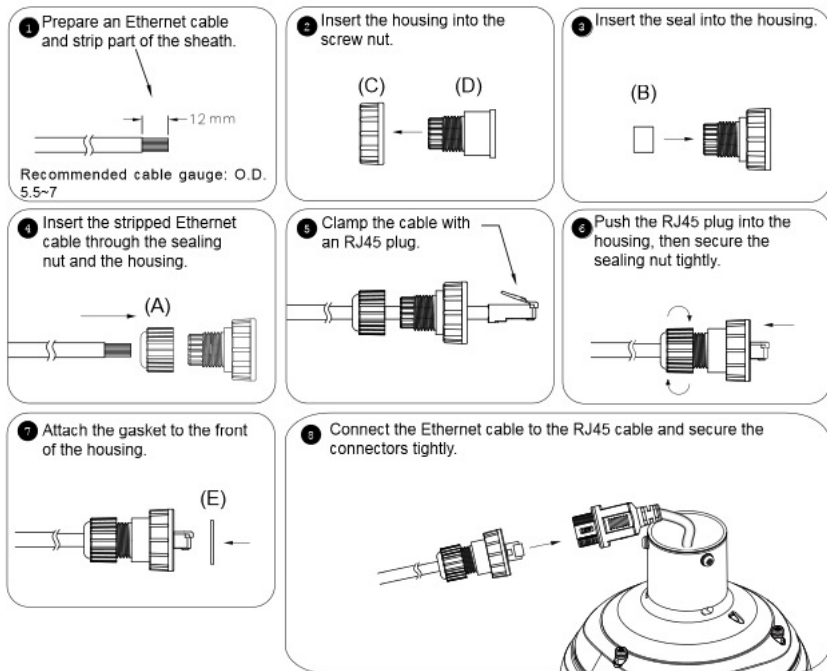
Use CAT5e cables only.



● Components of the Waterproof Connector



● Assembling Steps

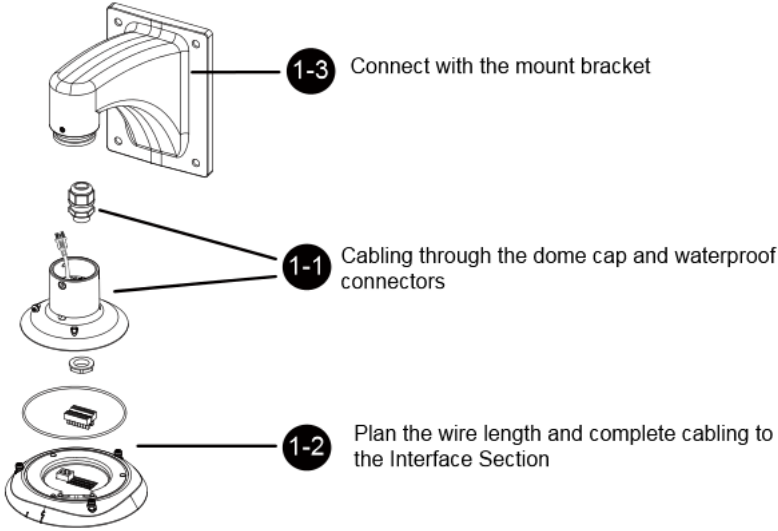


EN-3

3-2. Connecting Power and I/O Wires

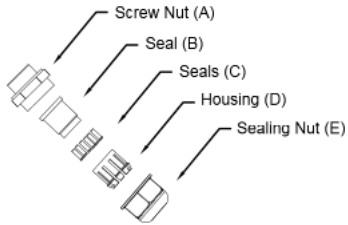
If you need to connect I/O wires and 24V power, disassemble the top section of the camera. It is highly recommended to complete the following before you can mount the speed dome camera at the installation site:

Skip this section and move to Section 3-3 if you connect the Ethernet cable only.



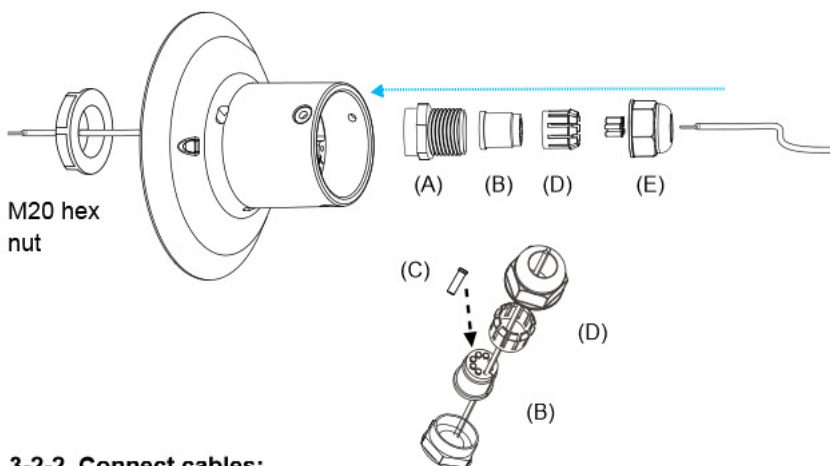
3-2-1. Cabling through the Waterproof Connectors

● Components of the Waterproof Connector



- Wire range: 13~16AWG (1.2~1.8mm)
- A socket wrench for the M20 hex nut is required.

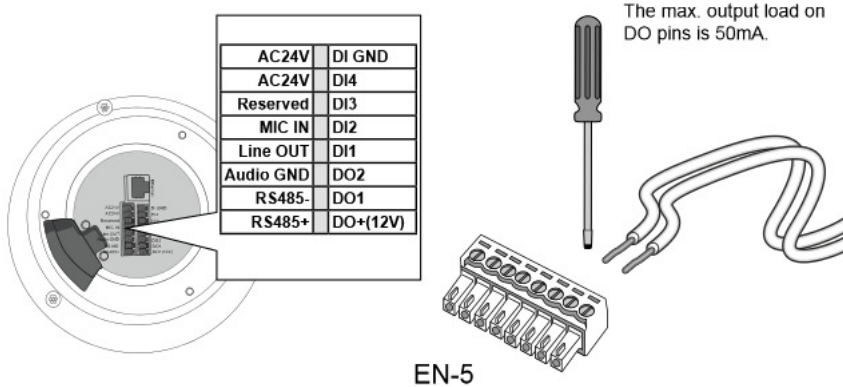
1. Disassemble the components of the waterproof connector into parts (A) ~ (E) as shown above.
2. Remove the plastic stopper from the bottom of the dome cap and keep the M20 hex nut for later use.
3. Depending on the number of wires, remove seals (C) from the rubber seal (B).
4. If you have external devices such as sensors and alarms, feed IO wires through the waterproof connector (E --> D --> B --> A) as illustrated below. Note that there are 16 holes on the seal (B), and wire range is between 1.2 and 1.8mm.
5. Push the seal (B) into the housing (D).
6. Secure the sealing nut (E) tightly.



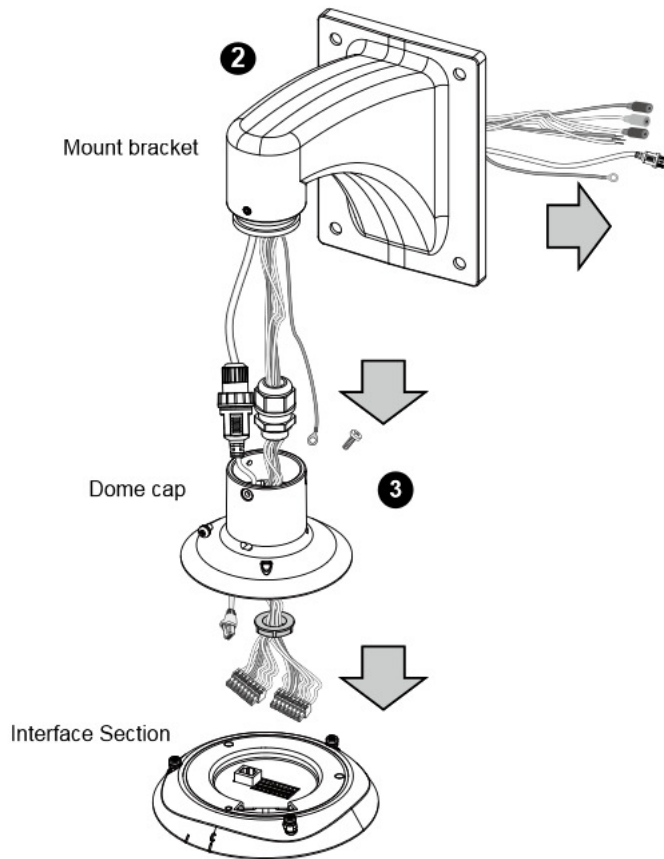
3-2-2. Connect cables:

1. Use a small-size flat-blade screwdriver to secure IO wires to the included terminal blocks. You may also purchase an IO combo cable from VIVOTEK.

Wire range: 13~16AWG
Strip length: 6~7mm
Screw: M2



2. Feed the Ethernet cable and IO wires through the mounting bracket, the openings on the dome cap, and to the interface section. Attach the rubber seal plug to dome cap for water proofing.
3. Secure the included ground wire to the dome cap, pass it through the mount bracket, and connect the other end to a grounded conduit later.



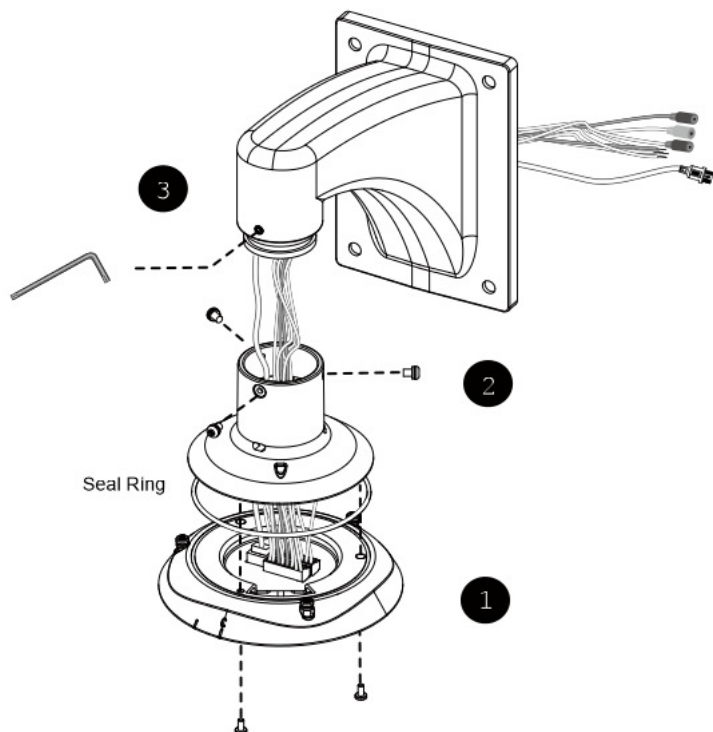
NOTE:

1. IO wires are user-supplied.
2. Avoid touching the circuit boards to prevent damage by electro static discharge.

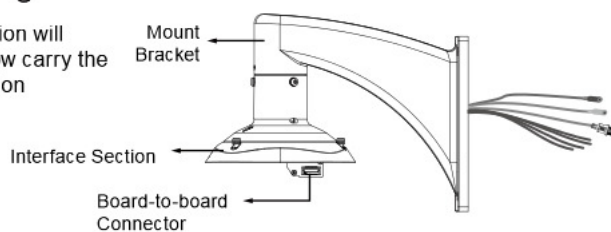
3-2-3. Connect with the Mount Bracket

Combine the components of the top section.

1. Press the seal ring into the groove on canister. Use the black machine screws (M4x8) to attach the interface section to the dome cap. Note that you should orient and align the spring contacts with the dehumidifier unit on the dome cap.
2. Secure the dome cap to the mount bracket.
3. Use the included hex wrench to secure the connection.



When done, the top section will look like this. You can now carry the camera and the top section to the installation site.



EN-7

! IMPORTANT:

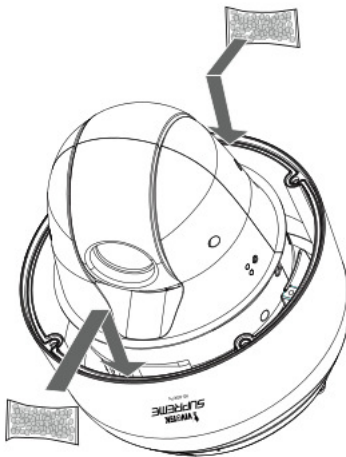
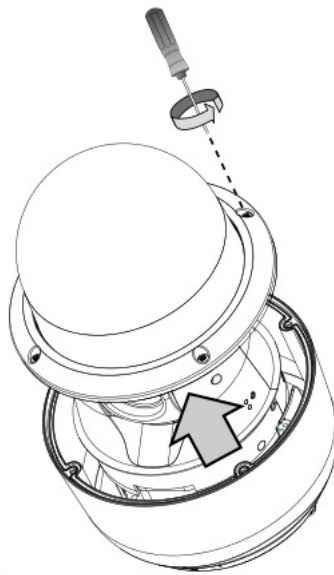
You should examine whether the color of the silica gel inside the chassis has turned red. If so, you should replace the desiccant bag.

To replace the desiccant bags:

1. Remove the dome cover by loosening 4 T25 anti-tamper screws.
2. Replace the desiccant bags by attaching them firmly to the inside of the chassis.
3. Re-install the dome cover.

Also note the following:

1. Do not install the camera in a raining day.
2. It takes approximately 2 days to suppress the moisture level to 30% or lower.
3. Condensation may still be observed from on the dome cover within 30 minutes.



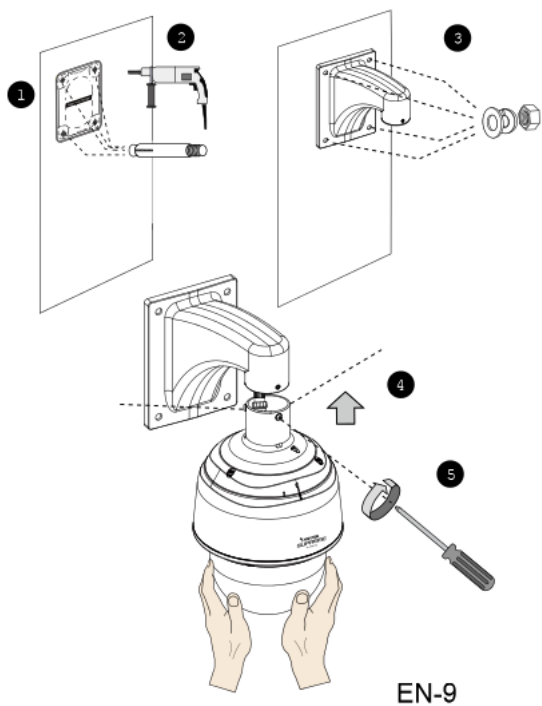
3-3. Mounting the Network Camera

NOTE:

Before mounting the camera, install an SD card if you prefer recording to local storage.

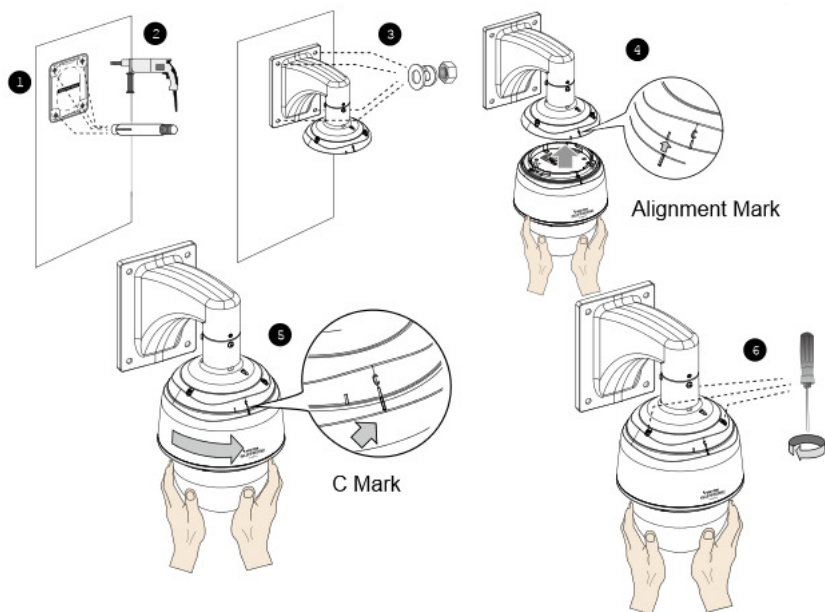
3-3-1. Mounting with Ethernet Connection Only

1. The camera weighs 3.66kg. Select a rigid mounting location to prevent vibration to the camera. Attach the alignment sticker to the wall.
2. Drill 4 pilot holes (10mm in diameter and 4cm deep) into the wall, and then hammer in threaded anchors. Note that you should hammer the anchors with hex nuts on them so that the threaded poles will not be deformed! If preferred, drill another hole for routing cables.
3. Secure the wall mount bracket to wall using 4 sets of captive washers and nuts.
4. Align the camera with the wall mount bracket.
5. Tighten 3 included screws using a Phillips screwdriver. Make sure all parts have been securely tightened.



3-3-2. Mounting with Ethernet & I/O Wires

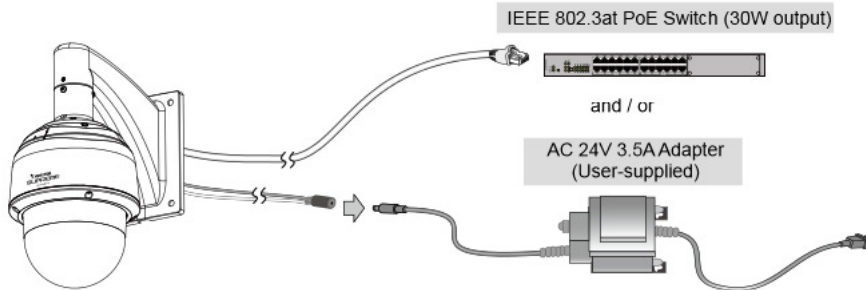
1. The camera weighs 3.66kg. Select a rigid mounting location to prevent vibration to the camera. Attach the alignment sticker to the wall.
2. Drill 4 pilot holes (10mm in diameter and 4cm deep) into the wall, and then hammer in threaded anchors. Note that you should hammer the anchors with hex nuts on them so that the threaded poles will not be deformed! If preferred, drill another hole for routing cables.
3. Secure the wall mount bracket to wall using 4 sets of captive washers and nuts.
4. Align the camera body with the top section. Align the alignment mark on the camera with that on the interface section. Push the camera up to match the top section.
5. Rotate the camera clockwise until its alignment mark is aligned with the "C" mark.
6. Use the included T25 stardriver to tighten the 3 anti-tamper screws from the top. Make sure all parts have been securely tightened.



4 Network Deployment

General Connection

1. Connect the Network Camera's Ethernet cable (CAT5e) to a PoE Plus switch. A 30W PoE output port alone can not drive the onboard heater, and hence if using the PoE switch alone, the application does not apply in low-temperature condition. The 30W PoE plus can only drive the camera when it is working at a temperature higher than -5°C .



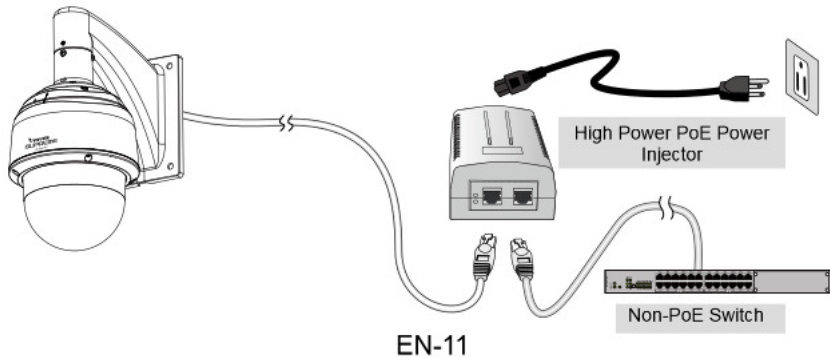
2. Connect the power wires to an AC 24V power adaptor (user-supplied). The AC 24V adaptor can drive the camera and the onboard heater.

You can connect both power sources for redundancy in power supply.

Power over Ethernet (High Power PoE)

When using a non-PoE switch

Use a High Power PoE power injector (separately purchased) capable of 60W output to connect between the Network Camera and a non-PoE switch. Sufficient power is required for low temperature conditions when the onboard heater is activated.



5 Assigning IP Address

1. Install "Installation Wizard 2" from the Software Utility directory on the software CD.
2. The program will conduct an analysis of your network environment. After your network is analyzed, please click on the "Next" button to continue the program.
3. The program will search for VIVOTEK Video Receivers, Video Servers, and Network Cameras on the same LAN.
4. After a brief search, the main installer window will pop up. Double-click on the MAC address that matches the one printed on the camera label or the S/N number on the package box label to open a browser management session with the Network Camera.

6 Ready to Use

1. A browser session with the Network Camera should prompt as shown below.
2. You should be able to see live video from your camera. You may also install the 32-channel recording software from the software CD in a deployment consisting of multiple cameras. For its installation details, please refer to its related documents.



For further setup, please refer to the user's manual on the software CD.

HARDWARE LIMITED WARRANTY

What Is Covered: This warranty covers any hardware defects in materials or workmanship, with the exceptions stated below.

How Long Coverage Lasts: This warranty lasts for THIRTY-SIX MONTHS from the date of purchase by the original end-user customer.

What Is Not Covered: This warranty does not cover cosmetic damage or any other damage or defect caused by abuse, misuse, neglect, use in violation of instructions, repair by an unauthorized third party, or an act of God. Also, if serial numbers have been altered, defaced, or removed. Further, consequential and incidental damages are not recoverable under this warranty.

What VIVOTEK Will Do: VIVOTEK will, in our sole discretion, repair or replace any product that proves to be defective in material or workmanship. Any repair or replaced part of the product will receive a THREE-MONTH warranty extension.

How To Get Service: Contact our authorized distributors in your region. Please check our website (www.vivotek.com) for the information of an authorized distributor near you.

Your Rights: SOME STATES DO NOT ALLOW EXCLUSION OR LIMITATION OF CONSEQUENTIAL OR INCIDENTAL DAMAGES, SO THE ABOVE EXCLUSION OR LIMITATION MAY NOT APPLY TO YOU. THIS WARRANTY GIVES YOU SPECIFIC LEGAL RIGHTS, AND YOU MAY ALSO HAVE OTHER RIGHTS WHICH VARY FROM STATE TO STATE.

VIVOTEK INC.
6F, No. 192, Lien-Cheng Rd., Chung-Ho,
Taipei County, Taiwan.
www.vivotek.com

-
1. Proof of the date of purchase is required. In the event you can not render such document, warranty will commence from the date of manufacture.
 2. Cosmetic damage will only be covered by this warranty if such damage has been existed at the time of purchase.

P/N:625022800G Rev.: 1.0
All specifications are subject to change without notice.
Copyright © 2013 VIVOTEK INC. All rights reserved.



VIVOTEK INC.

6F, No.192, Lien-Cheng Rd., Chung-Ho, New Taipei City, 235, Taiwan, R.O.C.
|T: +886-2-82455282 | F: +886-2-82455532 | E: sales@vivotek.com

VIVOTEK Netherlands B.V.

Busplein 36, 1315KV, Almere, The Netherlands
|T: +31 (0)36 5389 149 | F: +31 (0)36 5389 111 | E: saleseurope@vivotek.com

VIVOTEK USA, INC.

2050 Ringwood Avenue, San Jose, CA 95131
|T: 408-773-8086 | F: 408-773-8298 | E: salesusa@vivotek.com