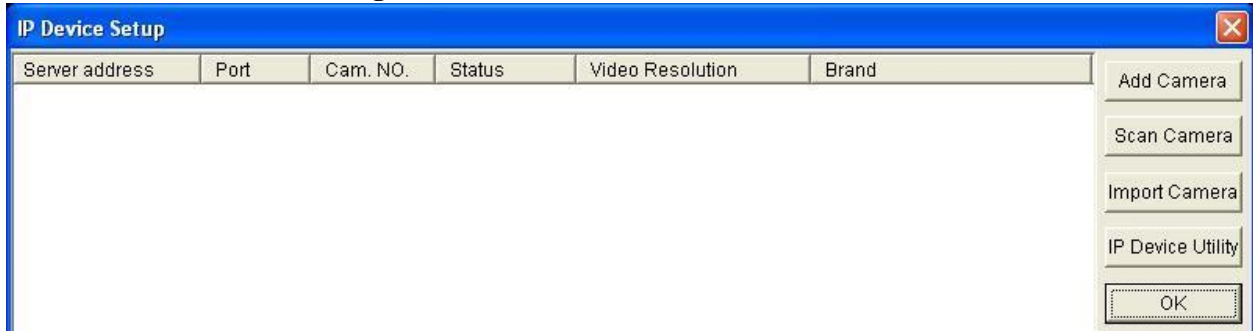


2.1.2 IP Camera Setup

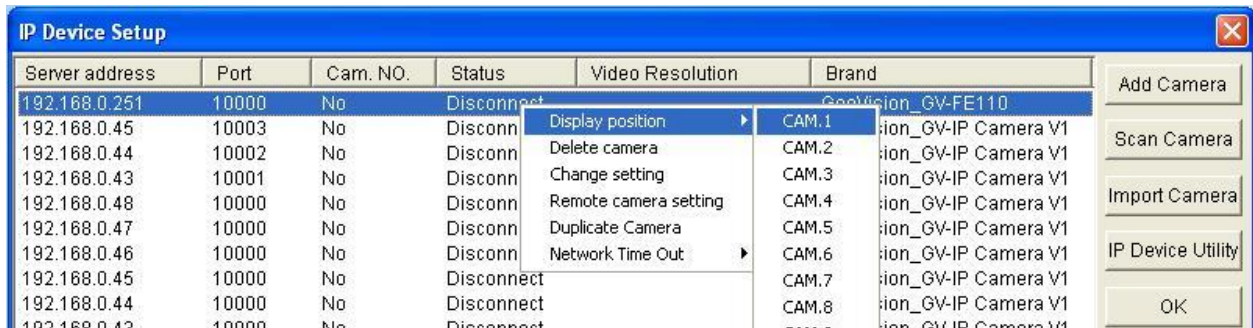
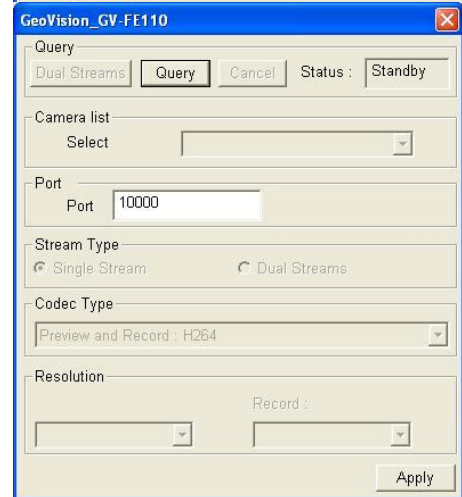
1. In Multicam, click on “**Configure**” icon.
2. Select “**General Setting**” -> “**Camera/Audio Install**” -> “**IP Camera Install**”.



3. If IP address is known, select “**Add Camera**” to manually add the camera by entering the IP address, port, user name, password, and camera model manually.

✓ *GeoVision IP Device’s default user name and password is **admin/admin***

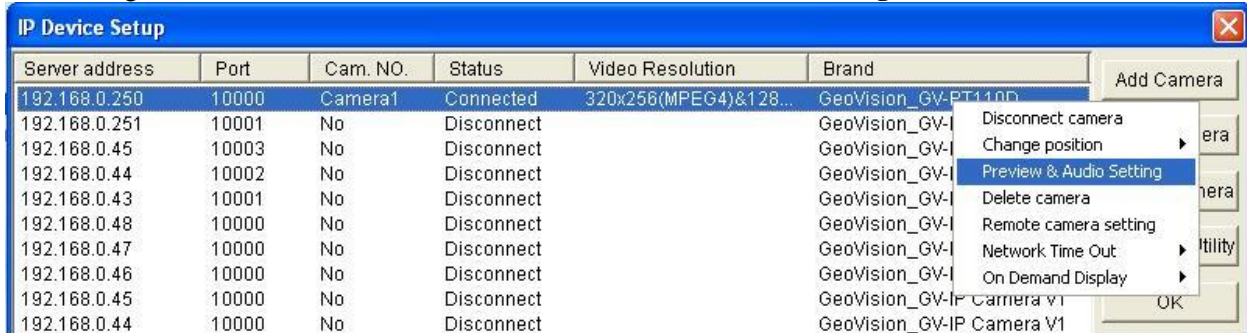
4. Otherwise, select “**Scan Camera**”.
 - a. In the search result, double-click on the desired IP Camera and enter the “**User name**” and “**Password**” of the IP Camera.
 - b. Select “**Query**”.
 - c. Click on “**Dual Streams**” button to switch from single stream to dual-stream model, if applicable.
 - d. Click on “**Apply**”.
 - e. Click on “**Close**”.
 - f. Right-click on the IP Camera in the IP Device Setup window.
 - g. Select “**Display position**” then map the camera on to desired camera position.
 - h. When the status of the connection changed to “**Connected**”, click on “**OK**”.



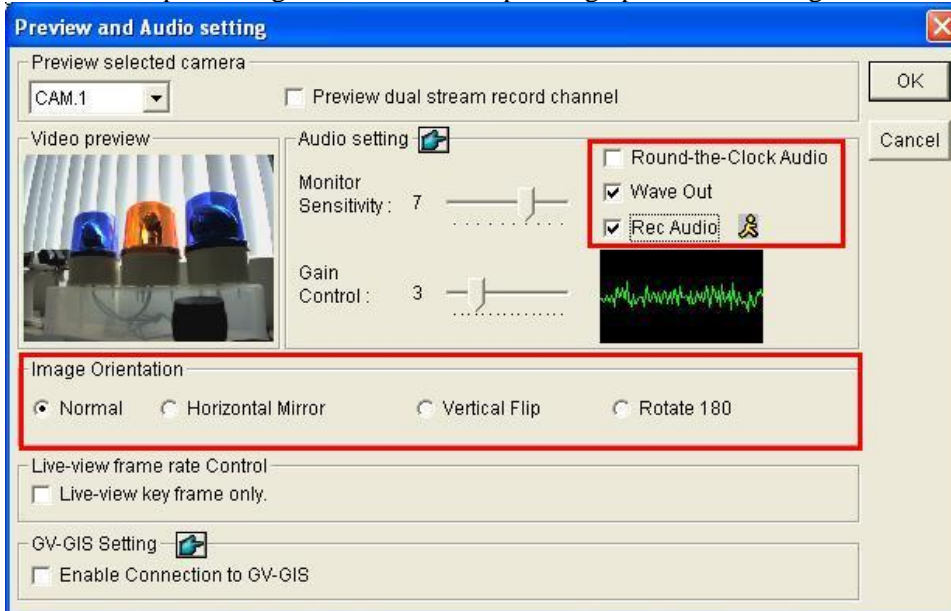
✓ For detailed instruction, refer to p.123 of v8.4 User Manual

2.1.3 Image and Audio Setup

1. In Multicam, click on “**Configure**” icon.
2. Select “**General Setting**” -> “**Camera/Audio Install**” -> “**IP Camera Install**”.
3. Right-click on the IP camera and select “**Preview & Audio Setting**”.



4. To flip the image, select the corresponding option under Image Orientation.



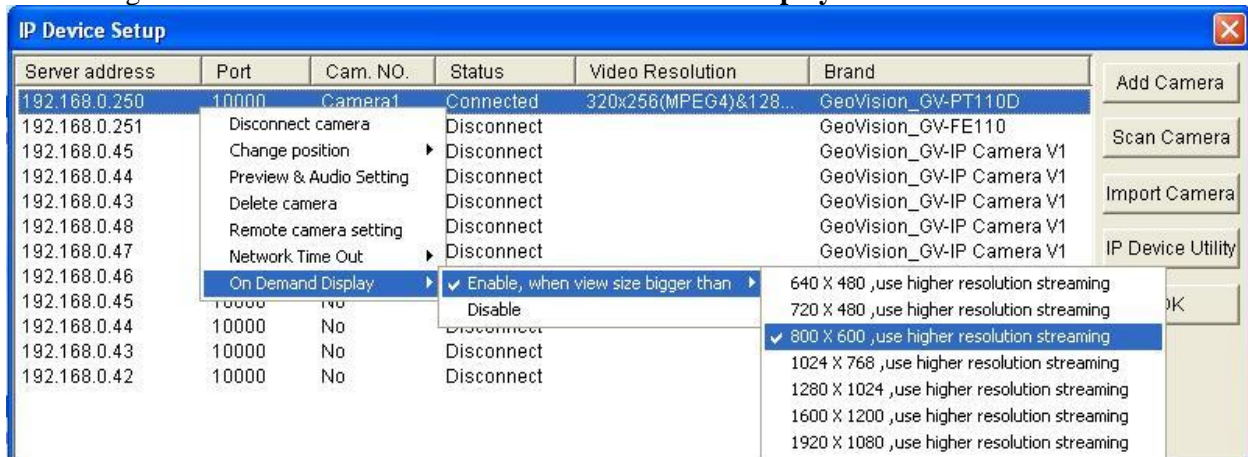
5. To enable audio, check “**Wave Out**”.
6. To enable audio recording, check “**Rec Audio**”.
 - a. Adjust Monitor Sensitivity to adjust audio detection sensitivity.
 - b. Adjust Gain Control to increase or decrease audio volume.
 - ✓ *High gain may result in increased noise and decreased I audio quality.*
 - c. Select “**Round-the-Clock Audio**” for 24/7 audio recording.
7. Click “**OK**”.
8. Click “**OK**” again to exit IP Device Setup.

- ✓ For detailed instruction, refer to p.126 of v8.4 User Manual

2.1.4 On Demand Display

On Demand Display is only applicable to IP devices which support dual-stream function. Dual-stream can be enabled on GeoVision IP cameras via the web interface. For more information, refer to IP Camera's user manual.

1. In Multicam, click on “**Configure**” icon.
2. Select “**General Setting**” -> “**Camera/Audio Install**” -> “**IP Camera Install**”.
3. Right-click on the IP camera and select “**On Demand Display**”.



4. Select **Enable** or **Disable**.
5. Select the resolution limit for higher resolution streaming.
 - a. For the example above, with resolution limit of 800x600, the IP camera will stream 320x256 resolution by default when the camera is viewed in multiple-channel division. The IP camera will stream 1280x1024 instead when going into four-division view or single-channel view, when live view resolution of the camera is greater than 800x600.

- ✓ For detailed instruction, refer to p.137 of v8.4 User Manual

2.1.5 Supported IP Device Brands List

GeoVision v8.4 software supports the following IP device brands.

To view a specific list of IP device models supported associated with each brand, visit GeoVision's website at http://www.geovision.com.tw/english/4_21.asp

GeoVision
ACTi
Arecont Vision
AXIS
Bosch
Canon
CNB
D-Link
Etrovision
Hikvision
IQinVision
JVC
MOBOTIX
Panasonic
Pelco
Sanyo
SONY
UDP
Verint
VIVOTEK