

Setting Up Auto Reboot

The Auto Reboot feature restarts your Windows at a scheduled time. Click the **Configure** button (No.14, Figure 1-2), point to **General Setting**, and then select **Auto Reboot Setup** from the menu to bring up this dialog box.

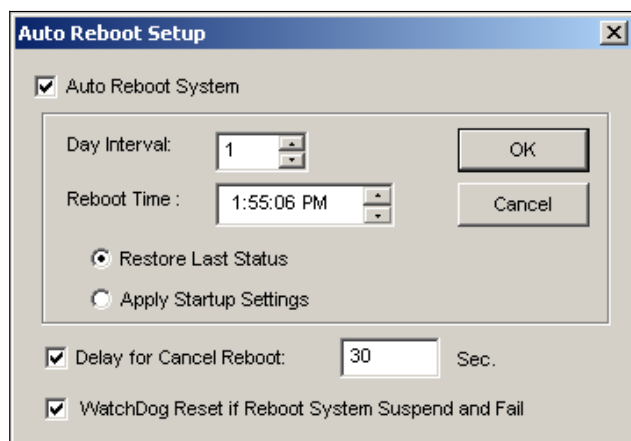


Figure 1-24

[Auto Reboot System]

Enables the setup for reboot time. Specify how often (from 1 to 14 days) at the Day Interval selection field, and when the Windows should reboot at the Reboot Time.

- **Restore Last Status:** The system will resume the last operation after rebooting, e.g. camera recording.
- **Apply Startup Settings:** The system will apply your Startup settings in the System Configure window after rebooting.

[Delay for Cancel Reboot] When the item is checked, a warning message will appear and count down your specified time before the reboot schedule begins. Clicking the **Cancel** button on the prompt will cancel the rebooting.

[Watchdog Reset if Reboot System Suspend and Fail]

Prior to Reboot Time, if GV-System finds any abnormal Windows operation that may hinder the Auto Reboot, GV-System will instruct a hardware reboot of Windows. The feature is not available in GV-250 Card.

Note: GV-System must already be added to Windows Startup menu; only so will the Windows automatically restart GV-System after a reboot. Also, make sure you've correctly connected a GV video capture card to your motherboard for the hardware watchdog feature.
