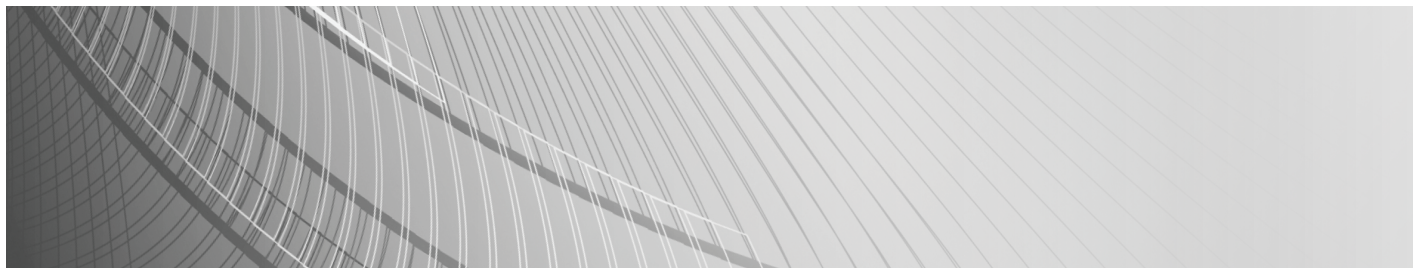




Alnet Systems:

Professional Open Platform Video Management Solutions



About Us

Alnet Systems Inc., for nearly 10 years has engaged in developing digital video recording software for CCTV systems. The first line of products named VDR-S series has been installed on over 60,000 systems worldwide.

Many years of experience allows us to create reliable solutions that are also very functional. For over 5 years we have been developing systems designed for IP cameras.

Currently offered are hybrid systems named NetHybrid as well as strictly IP systems named NetStation, both are "open platform" types. NetHybrid and NetStation are systems for the most demanding customers who seek reliable and professional solutions.

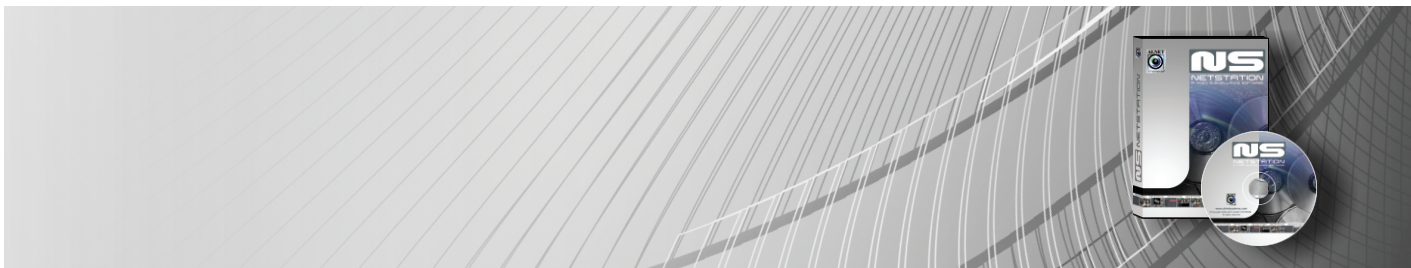
Our engineers are constantly working on developing features to meet new market demands. Intensive development, focused on intelligent image analysis will soon bring us to a new era in video security systems.



All mentioned brand names are registered trade marks and property of their owners

NetStation:

Open Platform Network Video Surveillance System



The NetStation can be a hybrid system which means that from a maximum of 64 cameras, 16 can be used as analog and the rest as 48 IP cameras. Hybrid Solutions, using Analog/IP are extremely useful in situations where there is a need for developing new installations, or adding IP cameras to existing analog CCTV installations. In this case the project managers are able to utilize existing installations which greatly reduce the cost of re-development of projects. For a NetStation Hybrid System, a PC based DVR is used where analog cameras connect to the PC using Capture Boards, and the remaining cameras utilize the local network.

Since the NetStation is an open platform "hybrid" system, this means that it is compatible with most IP cameras and IP video servers made by the leading manufacturers. Scalability of the software allows for the ability to adjust the installation size for specific projects depending on project requirements. Application updates guarantee that the software will always have the latest features and solutions that follow CCTV trends. NetStation perfectly suits small enterprise sized installations, ranging from 4 cameras to several hundred cameras.

The NetStation software is compatible with the newest IP camera solutions utilizing the HDTV standard. Mega-Pixel IP Cameras which provide video at resolutions, several times greater than PAL/NTSC will be a common industry standard in all future installations. The use of Mega-Pixel cameras will change the quality and reliability of CCTV systems.



NetStation Software is an advanced Video and Sound recording system operating with IP and Analog Cameras. The system is based on the VDR-S application that is used in PC based DVR systems by Ainet Systems.

Since the NetStation is based on the VDR-S application and has been operating reliably for nearly 5 years on over 60 000 applications, it has achieved guaranteed stability, reliability and functionality. This achieves the highest level of quality for recording systems.

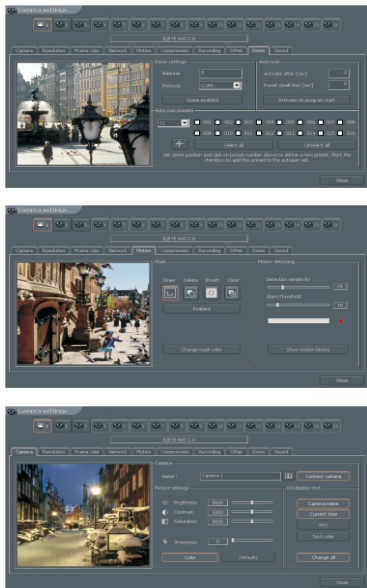
Scalability of the software allows for the ability to adjust the installation size for specific projects depending on project requirements.

Application updates guarantee that the software will always have the latest features and solutions that follow CCTV trends.

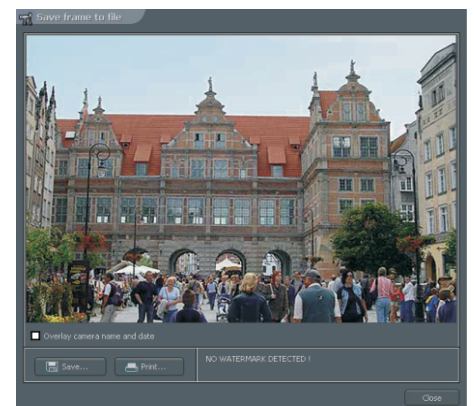
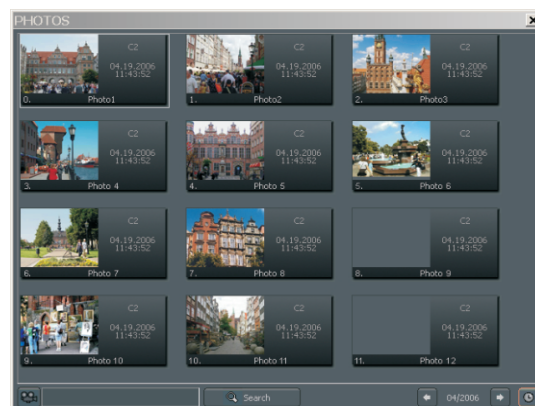
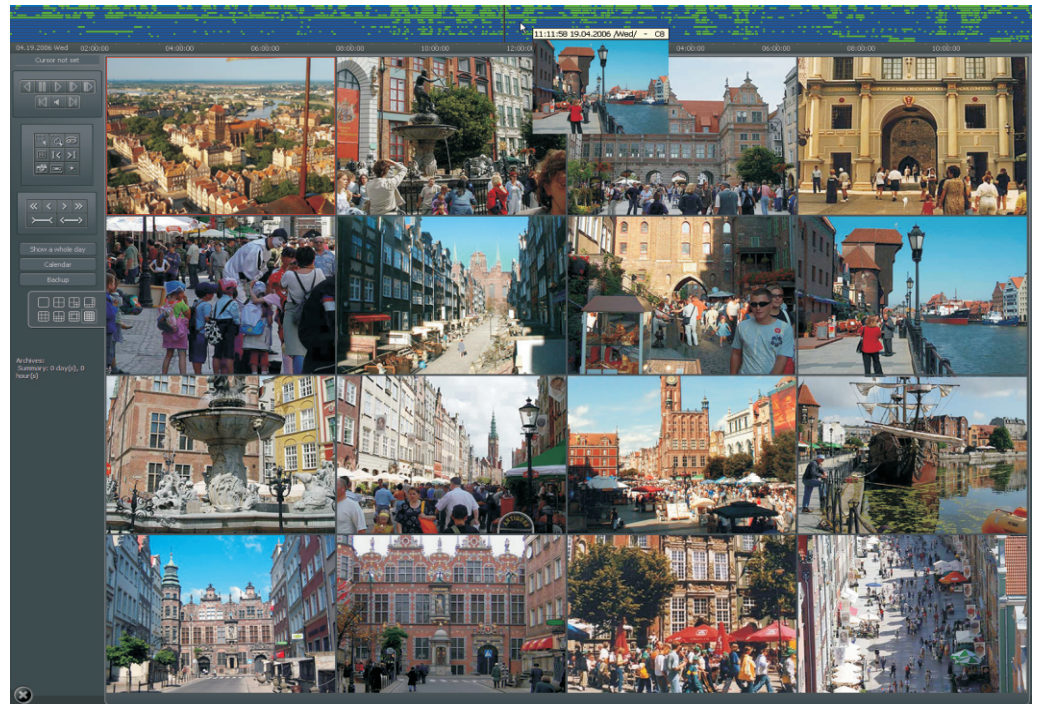
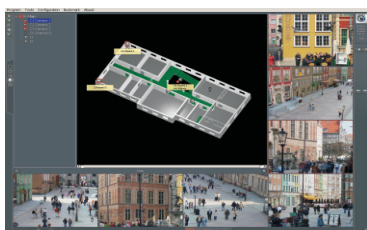
The Advanced Client Software named VDR-C allows for an unlimited amount of remote connections to access live video streams, recorded video, and many other functions from one location. There are also clients available for Mobile Devices. The application is considered one of the most advanced and expanded application for monitoring CCTV systems. The application can be used on devices equipped with SymbianOS and Windows Mobile Operating Systems.



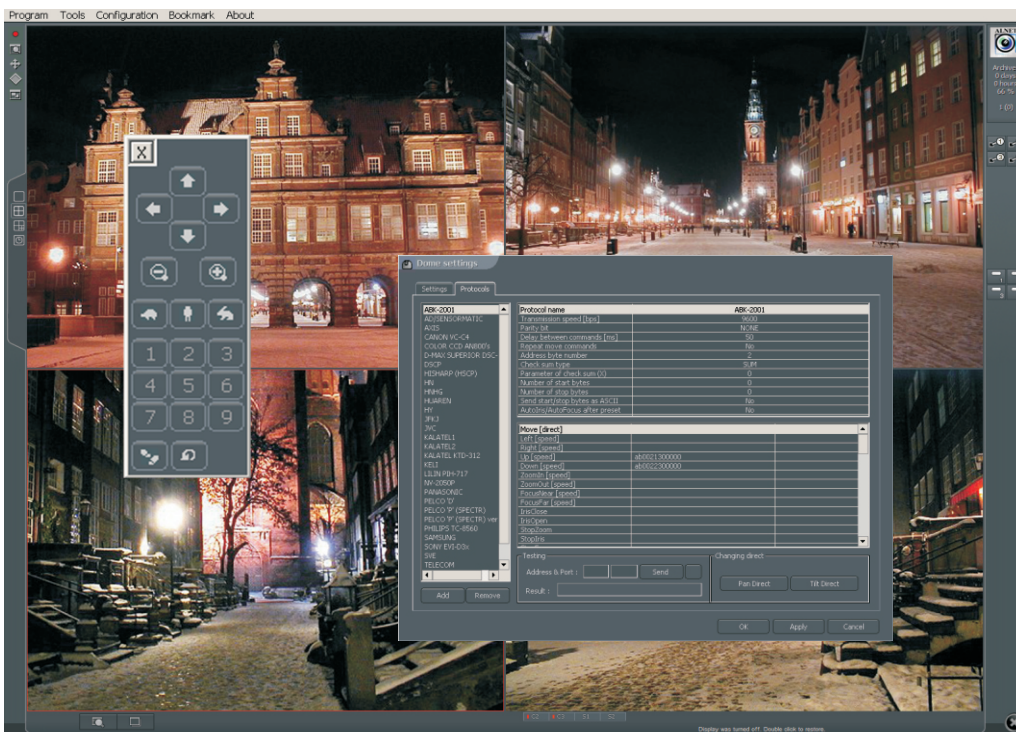
The Archive menu in the NetStation system is highly advanced and simultaneously very simple to operate, while reviewing and managing archived video. Recording for each camera channel in the archives creates its own timeline, which clearly shows all the events that occurred to initiate recording. This creates an easy and functional way to localize and view events that occurred. The recordings are shown the same way, using a timeline in the archives. In the archives, as the operator rolls over the timeline, a new preview window is displayed, where fast playback either forward or backward can be initiated. The speed of the playback using the roll over function depends on the speed that the mouse is moved at across the timeline. The Archive Control Panel speed settings provides for functions such as forward/reverse playback with three speed selections, normal, 2x and 4x. Searching for specific motion areas is an advanced feature, which allows for better analyzing of specific areas of recorded video. All events that are found can be marked with bookmarks, for later review, and easy access. Bookmarks can be placed manually in the archives, they can be user initiated, or can be done automatically upon Input Activation.



The Camera Configuration menu allows for the precise configuration of all camera parameters on all individual cameras. Multilevel menus allow for easy to understand tools that are available for each camera. Motion detection is one of the tools available in the camera configuration, where sensitivity and object masking are essential for each camera, especially for areas with constant motion.



A specialized photo album stores screenshots of cameras where they can be watermarked, and printed with ease from specific events. The intuitive backup function allows for fast and trouble free ways to backup your archived data to any device e.g. DVD, CD, or network storage. Also options such as backing up to video files e.g. AVI, this way they can be played back on most PC's without additional software having to be installed.



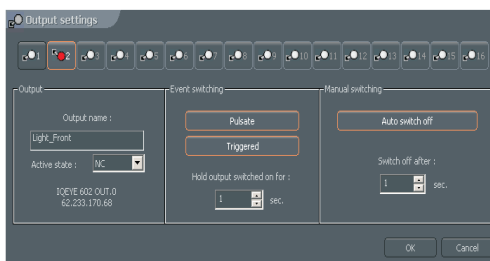
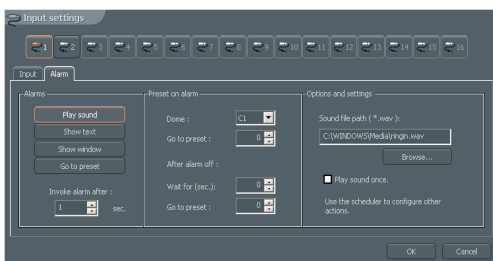
To make any CCTV system function correctly, a precise system of predefined times and actions is required. Included in the NetStation software is a very advanced scheduler with a multitude of options available to control all functions.

All camera recorded events, sound events, system alerts and even inputs and outputs can be specified to do specific options such as turn on recording, send output, connect to client, and emailing notifications.

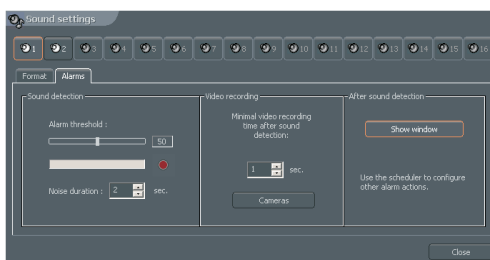
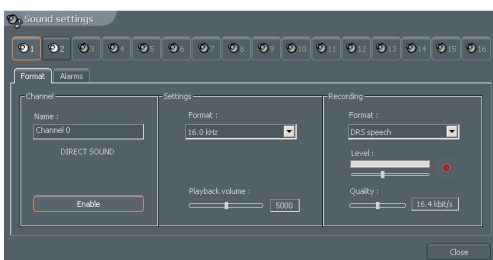
The connecting to remote client function is especially useful as no one is able to constantly monitor a CCTV System, and this would automatically show someone what action is happening and where.

The scheduler is based on a 24/7 system where any time frame can be specified to run on set times and events.

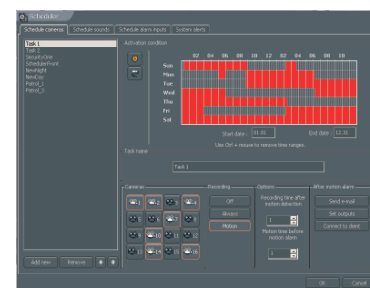
NetStation allows for the connection of up to 64 PTZ cameras. Controlling of the P/T/Z functions, can either be done manually using the keyboard, joystick, mouse or the on screen control panel. Wide range of supported domes made by several manufacturers, provide great compatibility. Preset Control is an option that can be set manually on PTZ cameras, so specific cameras can monitor larger areas.

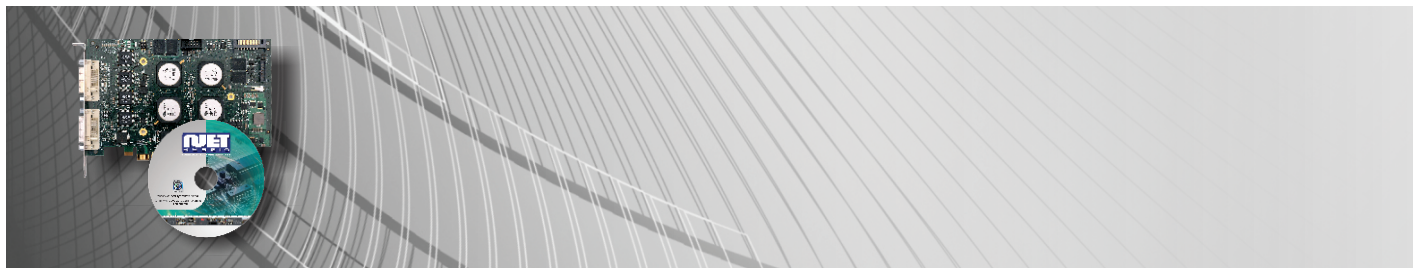


The control of Digital Inputs and Outputs is a seamless process, as a number of programmed events can be programmed to be invoked based on specific inputs. Functions as moving a PTZ camera to a preset, start recording and controlling outputs, can be invoked using a simple input such as a motion sensor, doorbell or any other input.



Extended sound channel control is a strong feature of the NetStation software. It is possible to record up to 64 audio channels from IP cameras. Recorded sound can easily be browsed in the archives alongside with video recordings. Recording based upon sound detection is useful as it allows to record whole events even when motion is not necessarily detected. Tools for sound detection allow the precise tuning of all parameters available for sound e.g. quality and volume.





System specification:

Up to 32 analog cameras

Up to 16 IP cameras

25,50,100,200,400, 800 frames per second for displaying and recording

High image resolutions
CIF, 2CIF, 4CIF, D1, HDTV (IP)

DJPEG, MPEG4, JPEG, H.264 compression

Advanced motion detection

PTZ dome control
(mouse, keyboard, Joystick)

Programable alarm inputs and switches

Advanced archive browser

Watermark

Recording and "live" playback of up to 32 audio channels

E-mail and SMS notification

Dynamic IP server

Client application for Windows XP / Vista, Windows Mobile, SymbianOS, BlackBerry, Android.

Alnet Systems NetHybrid is a professional solution for digital recording and remote transmission created for use in modern CCTV systems. Advanced techniques of compression and transmission of video allow for remote viewing of video with HDTV quality, even using a slower connection such as GSM/EDGE.



Advanced system settings allow for precise setting of each parameter such as: resolution, displayed frame-rate, and recording frame rate.

NetHybrid system based on hardware and software components from VDR-S allows the usability of a maximum of 32 Analog Cameras and 16 IP cameras.

Hybrid solutions are useful in installations where an existing Analog installation is present, and camera expansions are based on IP. In such cases, the NetHybrid system is a very scalable and flexible solution which at a low cost allows the migration of Analog and IP Technologies in one system. Support for many IP Cameras Manufacturers allows project managers multiple choices as many solutions to each project. Functions such as Digital Zoom, Dynamic Resolution, and Transfer of Video, allows for practical solutions using Megapixel IP Cameras.

Remote connections to NetHybrid are possible with the help of free client software - CMS Professional. Utilizing TCP/IP protocols it is capable of connecting to an unlimited number of servers in multiple locations. Expanded functionality, quality video archives, and high-speed transmission of video are only some of the features available in CMS Professional.

Besides Client applications for Windows XP/Vista, entire families of professional solutions exist dedicated for mobile applications utilizing Windows Mobile, SymbianOS, BlackBerry and Android.

System overview	
NH PRO Series	Cost effective non-realtime hybrid system with software compression
NH RT Series	Economic real time hybrid system with software compression
NH AVC Series	High performance real time D1 system with H.264 hardware compression



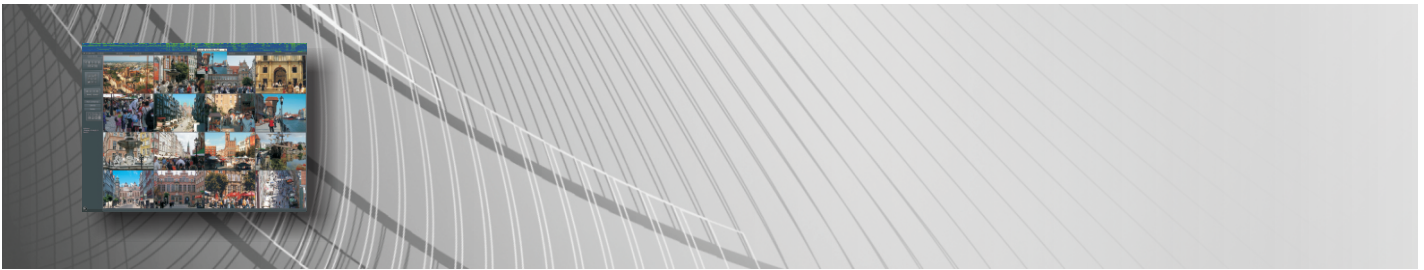
NetHybrid		PRO4/25/xIP	PRO8/50/xIP	PRO12/75/S/xIP	PRO16/100/S/xIP	PRO32/200/xIP
Analog video inputs		4	8	12	16	32
IP inputs (xIP-optional)		0/4/8/16	0/4/8/12/16	0/4/8/12/16	0/4/8/12/16	0
Audio inputs (with AudExt)		2 lub 16	2 lub 16	3 lub 16	4 lub 16	16
ConExt module(s)		1	2	1	1	1
Display PAL/NTSC	CIF	25/30	50/60	75/90	100/120	200/240
	2CIF	25/30	50/60	75/90	100/120	200/240
	4CIF	16/20	32/40	48/60	64/80	100/120
Recording PAL/NTSC	CIF	25/30	50/60	75/90	100/120	200/240
	2CIF	25/30	50/60	75/90	100/120	200/240
	4CIF	16/20	32/40	48/60	64/80	100/120

NetHybrid		RT4/100/xIP	RT8/100/xIP	RT8/200/xIP	RTD16/400/LT/xIP	RTD16/400/xIP	RT32/800/xIP
Analog video inputs		4	8	8	16	16	32
IP inputs (xIP-optional)		0/4/8/12/16	0/4/8/12/16	0/4/8/12/16	0/4/8/12/16	0/4/8/12/16	0
Audio inputs (with AudExt)		4	4 lub 16	8	0	16	32
ConExt module(s)		1	1	2	1	1	1
Display PAL/NTSC	CIF	100/120	100/120	200/240	400/480	400/480	800/960
	2CIF	100/120	100/120	200/240	400/480	400/480	400/480
	4CIF	64/80	64/80	128/160	400/480	400/480	200/240
Recording PAL/NTSC	CIF	100/120	100/120	200/240	400/480	400/480	800/960
	2CIF	100/120	100/120	200/240	200/240	200/240	400/480
	4CIF	64/80	64/80	128/160	100/120	100/120	200/240

NetHybrid		AVC 12/300/xIP	AVC 16/400/xIP	AVC 24/600/xIP	AVC 32/800/xIP	AVC 8/300/xIP/1	AVC 16/400/xIP/2	AVC 24/600/xIP/3	AVC 32/800/xIP/4
Analog video inputs		12	16	24	32	8	16	24	32
IP inputs (xIP-optional)		0/4/8/12/16	0/4/8/12/16	0/4/8	0	0/4/8/12/16	0/4/8/12/16	0/4/8	0
Audio inputs		12	16	24	32	8	16	24	32
AvcExt module(s)		2	2	4	4	1	2	4	4
Display PAL/NTSC	CIF	300/360	400/480	600/720	800/969	200/240	400/480	600/720	800/969
	2 CIF	300/360	400/480	600/720	800/969	200/240	400/480	600/720	800/969
	D 1	300/360	400/480	600/720	800/969	200/240	400/480	600/720	800/969
Recording PAL/NTSC	CIF	300/360	400/480	600/720	800/969	200/240	400/480	600/720	800/969
	2CIF	300/360	400/480	600/720	800/969	200/240	400/480	600/720	800/969
	D 1	300/360	400/480	600/720	800/969	200/240	400/480	600/720	800/969

Digital Inputs / outputs module	ConExt0404	ConExt1604	ConExt1616	AvcExt0808
Digital inputs	4	16	16	8
Digital outputs	4	4	16	8
RS 485	Yes	Yes	No	Yes

Audio input module	AudExt1	AudExt2	AudExt3	AudExt4	CAPA 16
Audio inputs	1	4	8	16	16

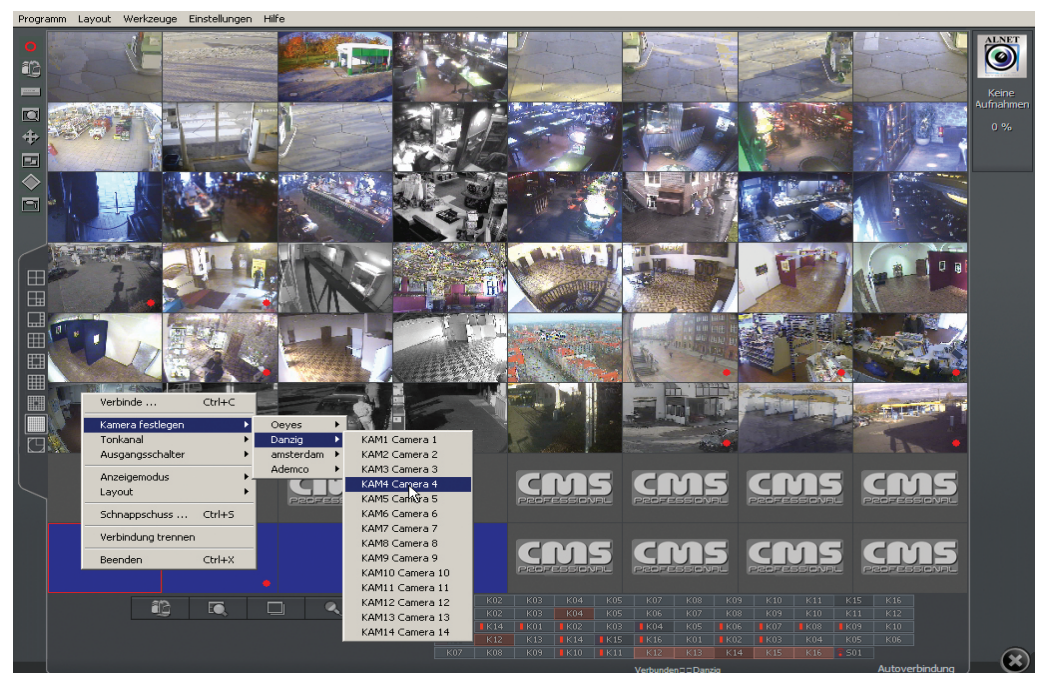


System overview:

- Multi monitor support,
- Multi server connection support,
- Remote servers status monitoring,
- Advanced remot archive files support,
- Up to 64 cameras on one screen,
- Advanced PTZ control,
- I/O control,
- Multi level e-maps,
- Automatic bandwidth control,
- Advanced digital zoom,
- Local recording support,
- Multi layout support,
- Back-up function,
- Multi stream support,
- Export evidence,
- Audio support,
- Advanced user accounts administration,
- Easy to use GUI.

CMS Professional is an advanced client application that works in conjunction with NetStation and NetHybrid Servers. The software provides the capability of remote monitoring both one location and large systems consisting of several hundred servers no matter the distance between them. Expanded support for eight monitors makes the CMS application suitable for advanced monitoring stations in an inexpensive and fast installation.

A special synoptic table is able to check up to a 1000 NetStation/NetHybrid server simultaneously with full reporting capability. Advanced functionality allows the operator to have quick access to all the basic functions necessary for everyday use. Specially designed system of dynamic video optimization allows the CMS application to stream multiple cameras effectively using low bandwidth consumption. This type of solution is extremely useful with servers that record using Mega-Pixel cameras. Each client application has the capability of recording video streams from Alnet servers, creating a redundant backup in case of server damage. Recorded streams can be easily accessed through the Archive module, which contains all of the same functions that are available on the server. The advanced timeline allows for a quick and effective way to search for events in the recordings, and bookmarks help facilitate the marking of events to be watched at a later date. If the event needs to be exported, it can be easily done using the backup/AVI function.



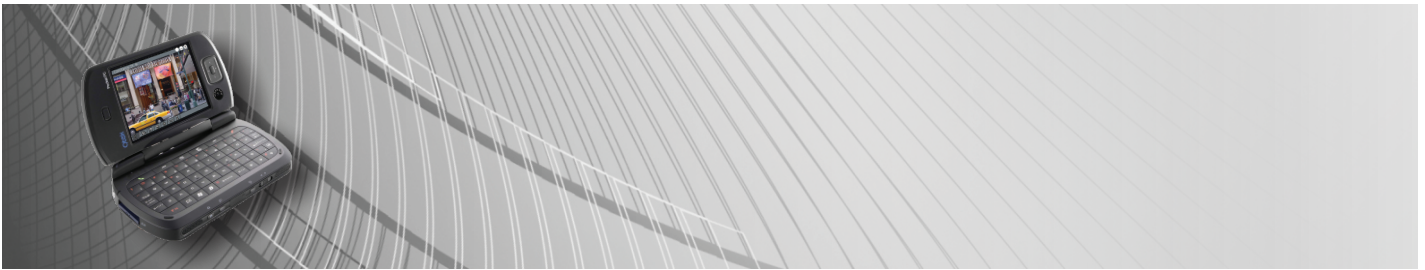
With extensive installations utilizing a large number of cameras, an E-map is a very useful tool to locate cameras in a given area. The ability to have multi-level building plans, allows for the easy monitoring of all cameras in any sized building.

CMS Professional client software can be used for continuous monitoring, or it can be automatically initialized based on an event that occurred on the server. It can simultaneously connect to 16 locations at once and stream video with the ability to display 64 cameras per monitor or 512 cameras per video wall.

Included with the functions of the CMS application, it is possible to check the presence of the operator and to set custom and dynamic layouts of different cameras.

The CMS application is designed around the server layout so it is very easy to train new personnel. With the Alnet CMS it does not take weeks of training to fully utilize its functions as it was professionally designed with the user in mind.





System specification:

PTZ Control,

PTZ Presets,

I/O Control,

Digital Zoom,

Megapixel camera support,

Dynamic Bandwidth Control,

Remote Archive files,

Multiserver connection,

Easy to use GUI,

Free of charge,

Multiplatform support:



Alnet Systems' CMS Mobile application, designed for mobile phones and PDA, is currently one of the most advanced solutions on the market. CMS Mobile allows remote access to NetStation / NetHybrid servers from almost everywhere on the planet. Applications are available in versions for all mobile devices with Symbian OS, Windows Mobile, Blackberry or Android.

Thanks to the innovative solutions in the field of image compression CMS Mobile is an excellent solution for remote monitoring through low bandwidth networks GSM/EDGE. In spite of low bandwidth offered by GSM providers the image on CMS Mobile is fluent and high quality.

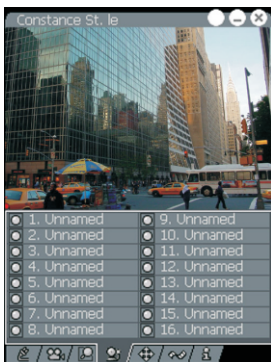
CMS Mobile application installed on a PDA with wireless transmission (WI-FI) is perfect for use by guards patrolling large areas. Now there is no need for permanent contact between guards and control room, images from cameras are always available on the PDA - immediately and everywhere. Such solutions make guards more efficient and in many cases allow personnel reduction. CMS Mobile, thanks to high image quality and vast functionality makes NetStation / NetHybrid remote monitoring systems more flexible and easier to use. System allows "live" view from all the cameras installed on the NetStation / NetHybrid servers.



Developed archive files menu allows quick and precise archive browsing recorded on remote server. Clear and "user friendly" PTZ dome control panel and digital input / output menu fulfils functionality of the system.

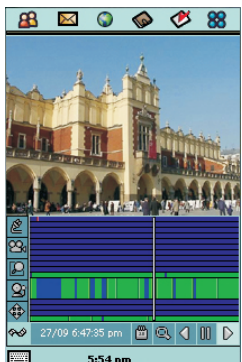
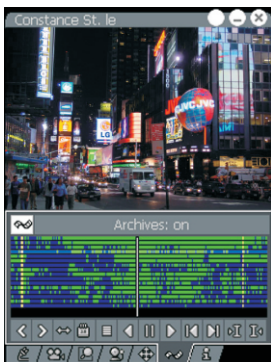


Main window includes all information about connection with remote server such as name of the viewed camera, server address and display speed (fps). It is possible in the bottom part of the screen to adjust compression level and display speed. These parameters provide precise description of picture quality to transmission speed.



Outputs / Inputs includes full list of discreet inputs / outputs installed on the server site, indicators near description show their state. Outputs are capable of controlling functions remotely such as: light swithes, gates and doors.

The CMS Mobile application used unique solutions of dynamic window which allows for observing only fragments of camera pictures.



Archives - advanced archive recording allows for unusually advanced browsing of recorded video. The unique time line provides a fast and precise way for users to find precise events. Fast scrolling and bookmarking additionally improves usage.

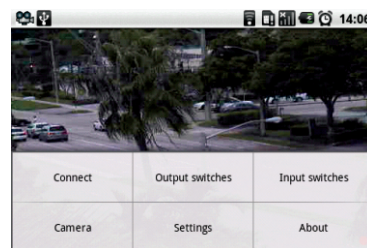


Cameras include actual lists of all installed cameras on server site. Red indicator near camera description informs when motion is detected and this definitely improves use.

This eliminates the problem with non-typical display sizes, which is not convenient for visual monitoring. Observed terrain can be moved in an easy way without brakes in transmission.



PTZ Control includes full set of tools for remotely steering of PTZ domes. Operator can manually steer in all directions or he can use available presets from a list in order for quick transfer to positions programmed earlier. On manual steering it is possible to choose one out of three speed reactions of PTZ dome which is useful on connections with low bandwidth. Additionally manual Zoom +/- option helps with precise tuning of the dome.



CMS Mobile application is available for free and it operates with NetStation and NetHybrid systems made by Alnet Systems company.