

Zavio F531E & F731E Quick Installation Guide

Please follow the installation steps below to set up your F531E & F731E IR IP Camera.

Check the package contents against the list below. *See P.1*

Physical overview. *See P.2*

Install the hardware. *See P.3*

Connect all cables. *See P.4*

Microsoft OS: Use the software CD to install Intelligent IP Installer. *See P.4*

Access the IP Camera using Intelligent IP Installer. *See P.5*

Change the Web Interface into your preferred language. *See P.5*

Mac OS using Safari Browser. *See P.7*

Change lighting environment setting. *See P.7*

Use IP Camera via Mobile Phone. *See P.8*

Windows Live Messenger Setting. *See P.8*

Access to Internet via Static IP, Dynamic IP or both. *See P.10*

For more information, please check the User Manual available in the Software CD or you can download the latest software from <http://www.zavio.com>

Package Contents

1. F531E

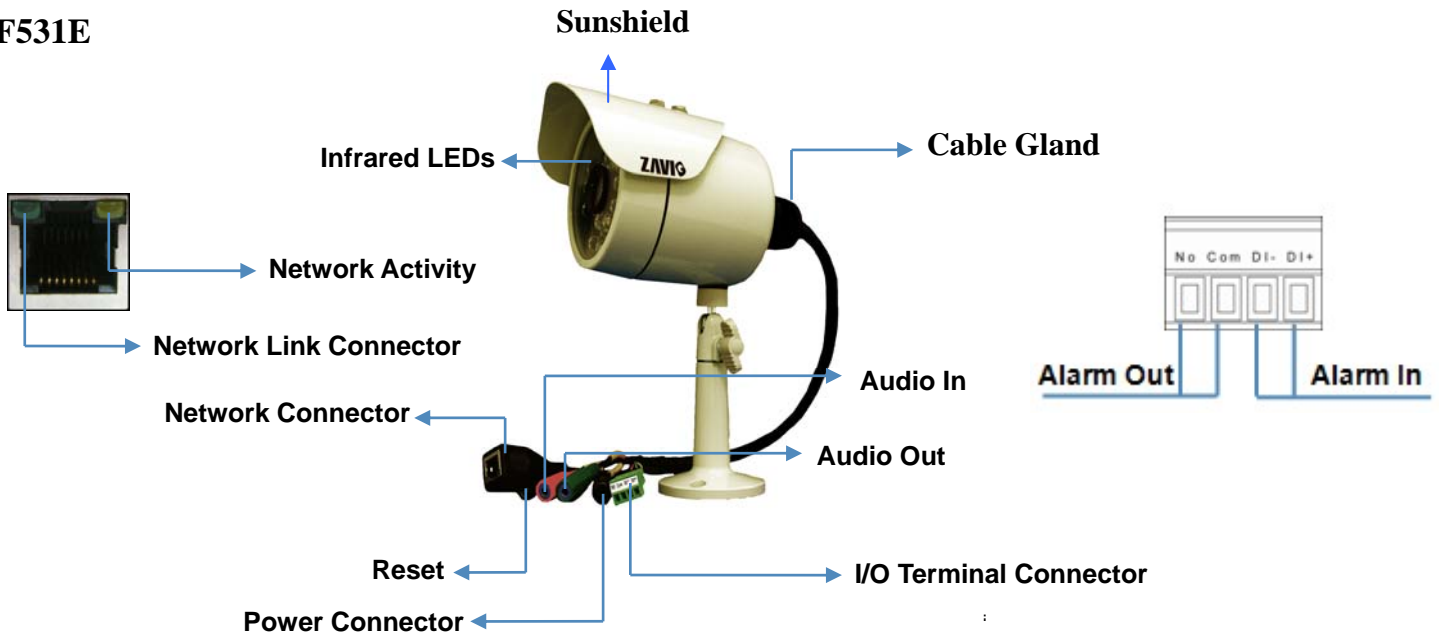
Camera	F531E Indoor/Outdoor IR IP Camera
Quick Installation Guide	Brief product information and quick installation
Software CD	IP Surveillance Software Intelligent IP Installer User Manuals Language Packs
Mounting Bracket	Three screws and plastic wall anchors , Bracket
Adaptor	12V DC, max 12W

2. F731E

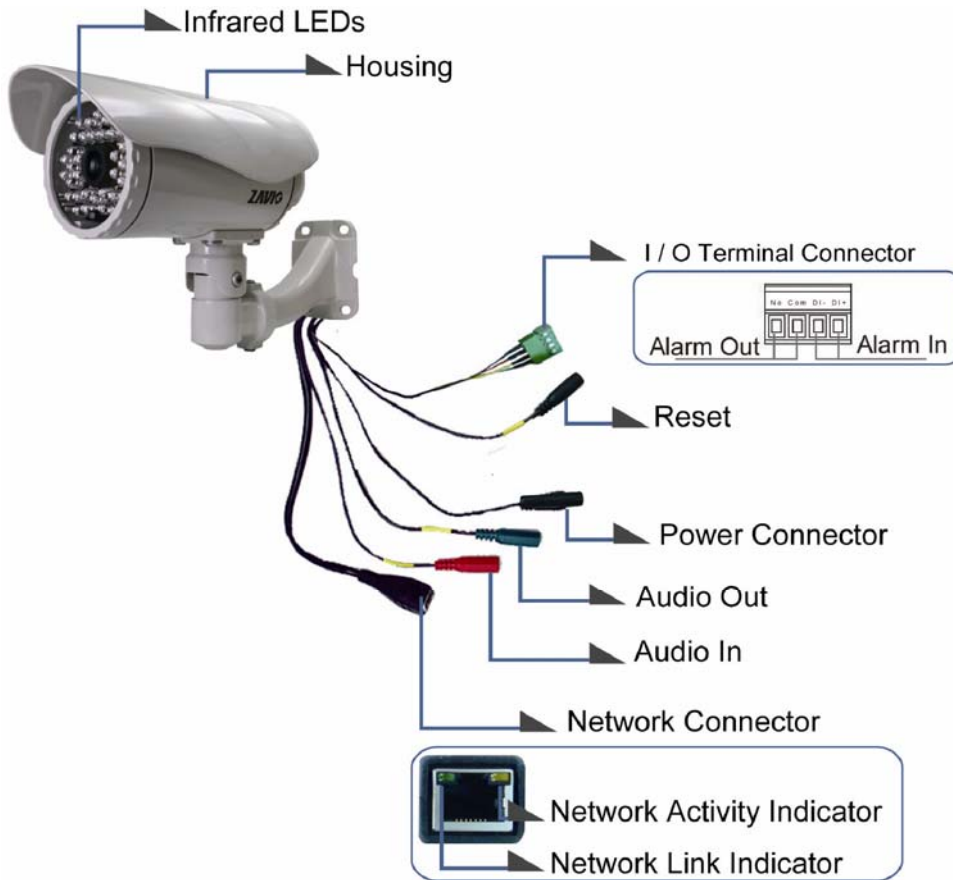
Camera	F731E Outdoor IR IP Camera
Lens	4.3mm, 6mm, 8mm, 12mm (optional)
Quick Installation Guide	Brief product information and quick installation
Software CD	IP Surveillance Software Intelligent IP Installer User Manuals Language Packs
Component Packs	Two Packs of screws

Physical overview

1. F531E



2. F731E



Note: Reset --- When the device is powered, press the Reset Button to reboot the device, or hold the Reset Button for 10 seconds to set the settings back to factory default.

Install the hardware

1. F531E

a. Sun Shield Assembling

Assemble sun shield with (2) screws and (2) plastic washers.



b. Wall mounting and Ceiling mounting

1. Use the 3 supplied screws to fix the bracket to a flat surface.
2. Loosen the lock ring to adjust the desired angle of the camera.
3. Tighten the lock ring.



2. F731E

a. Sun Shield Assembling

Fix the cover to the camera with two supplied screws.

(Type 1 screws)



b. Wall mounting

1. Fix the camera to the bracket with four supplied screws.

(Type 2 screws)



2. Fix the camera and bracket to the wall using two screw and plastic anchors.

(Type 3 screws)



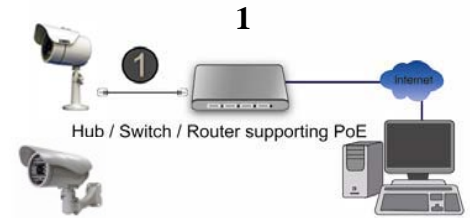
Note:

1. If not necessary, please don't open the housing to avoid moisture invading inside.
2. In case of needing to open the housing, please restore in 5 minutes.
3. If fog appears on the lens, please open the cover of IP CAM and expose it in the dry environment between 50~70°C around 2 hours to dry the wetted inside.
4. Please don't loosen the cable gland to avoid water leaking.

Make all cable connection

1. Power over Ethernet (PoE)

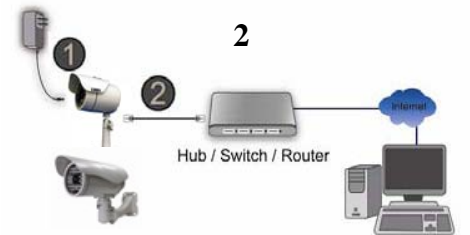
Using a standard RJ-45 network cable, connect the IP Camera to a PoE-enabled Hub / Switch / Router



2. Without Power over Ethernet (PoE) connection

2.1. Connect the power adaptor to the IP Camera.

2.2. Using a standard RJ-45 network cable, connect the IP Camera to a normal Hub / Switch / Router.



Microsoft OS: Use the software CD to install Intelligent IP Installer

Power on your PC and insert the CD-ROM. The setup page will show up automatically. Please follow those steps below to install the firmware.

Select **“Intelligent IP Installer”** and follow the installation process to complete the installation.



Change the Web Interface into your preferred language

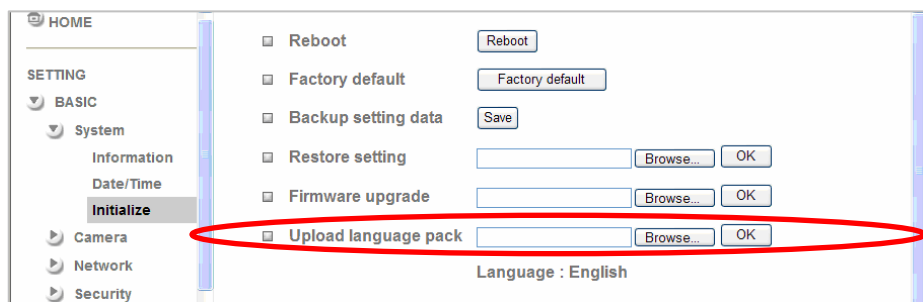
Use the settings screen to set the language of the Web Interface.

Go to “Setting → Basic → System → Language”.

1. Insert Software CD into your CD-ROM.

2. Browse and select the preferred language from language pack in the Software CD and then click OK.

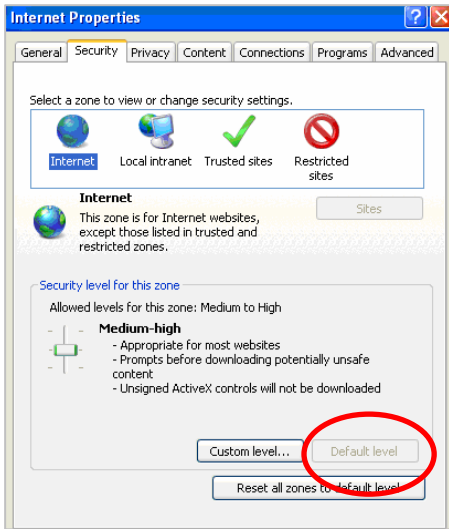
3. The web interface will change into your preferred language.



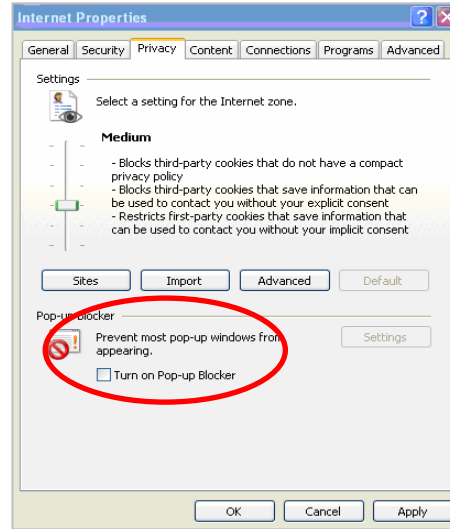
Access the IP Camera using Intelligent IP Installer

1. Before using Intelligent IP Installer, please check two setting.

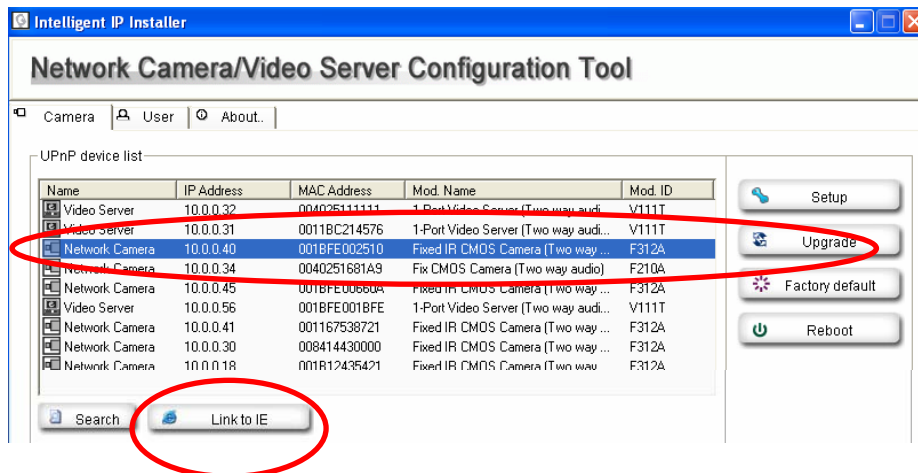
a. Browser's Internet Properties → Security
→ **Default Level**



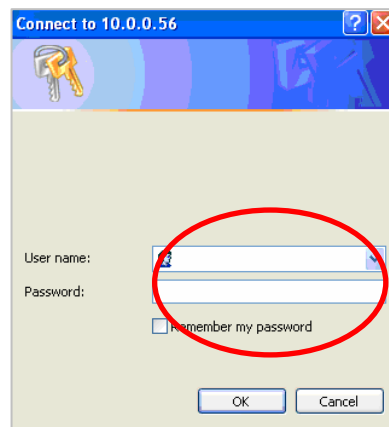
b. Browser's Internet Properties → Privacy
→ **Uncheck Pop-up Blocker**



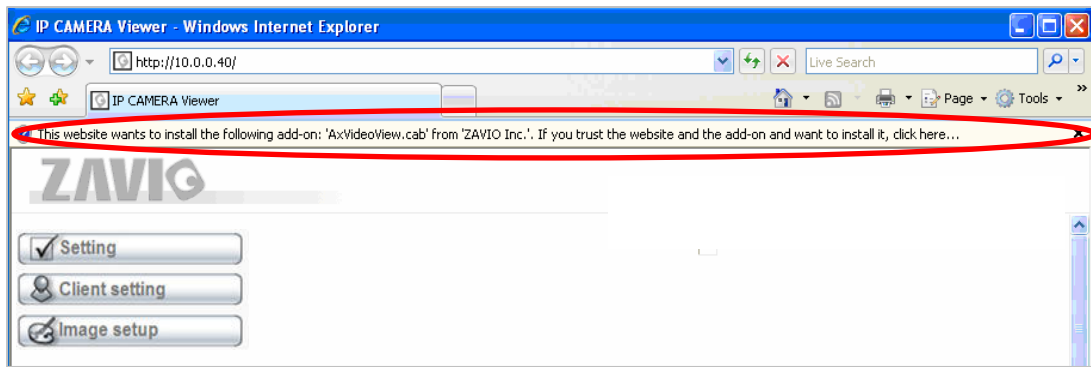
2. Click the Intelligent IP Installer Icon on your desktop. The main page will show up listing all active camera and video server devices. Select the relevant IP camera from the list and click **Link to IE**.



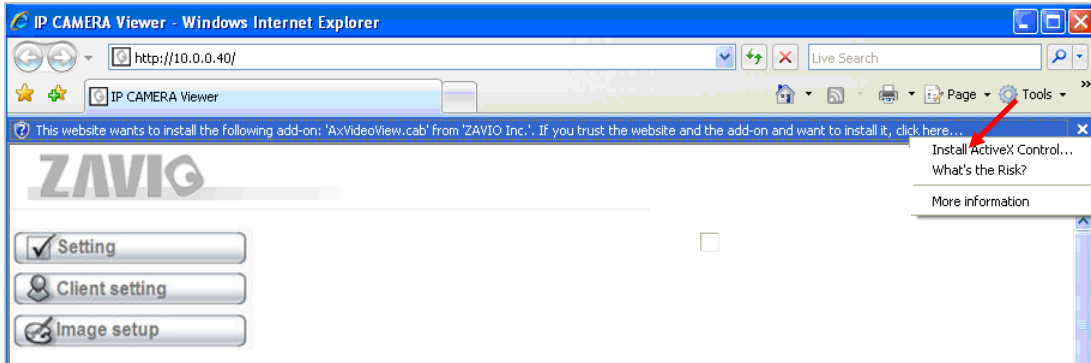
3. Enter your Username and Password to login to the IP Camera.
(Default is admin / admin)



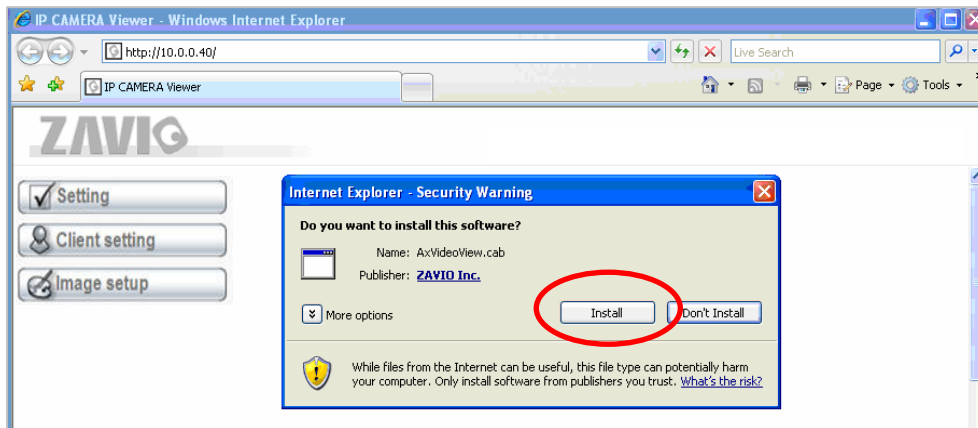
4. When accessing the IP Camera for the first time, a yellow information bar appears below the address bar: **This website wants to install the following add-on: 'AxvideoView.cab from 'Zavio Inc'.**



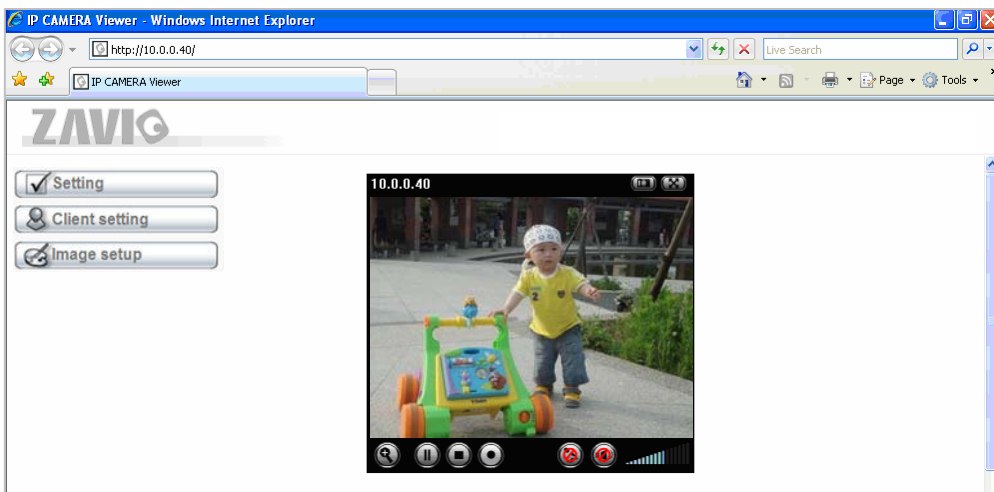
5. Click the information bar, and select **Install ActiveX control.**



6. Click **Install ActiveX.**



7. Live video displays in the centre of your web browser.

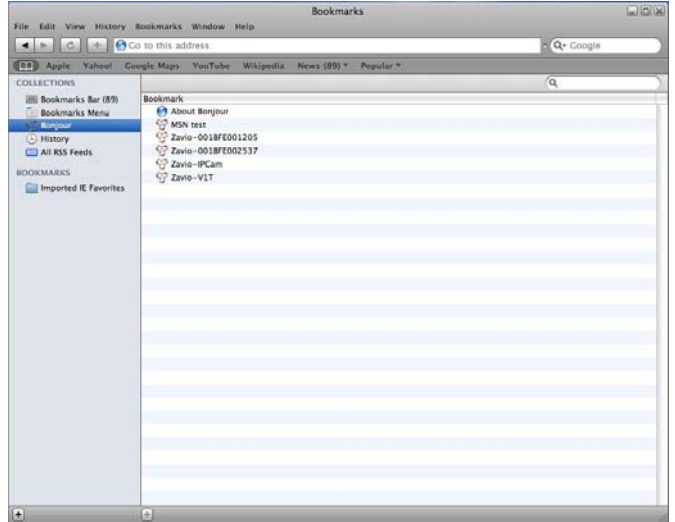


Mac OS using Safari Browser

1. Select **Safari icon**



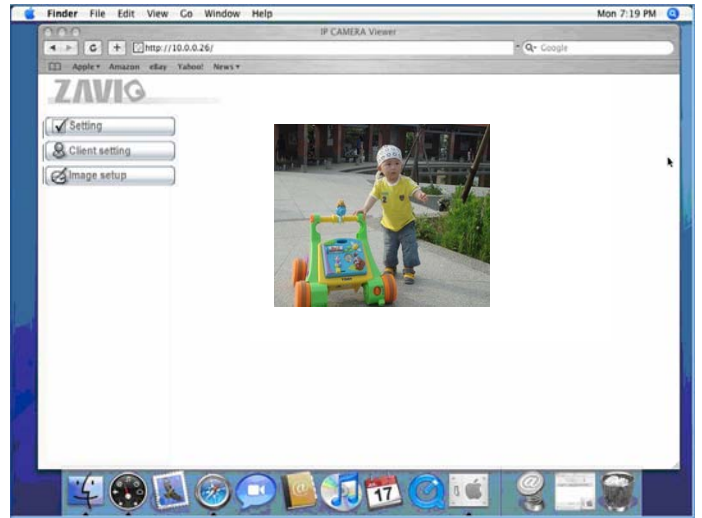
2. Click **Bonjour function** and select the camera you wish to access.



3. Enter name and password to login to the IP camera. (**Default is admin / admin**)



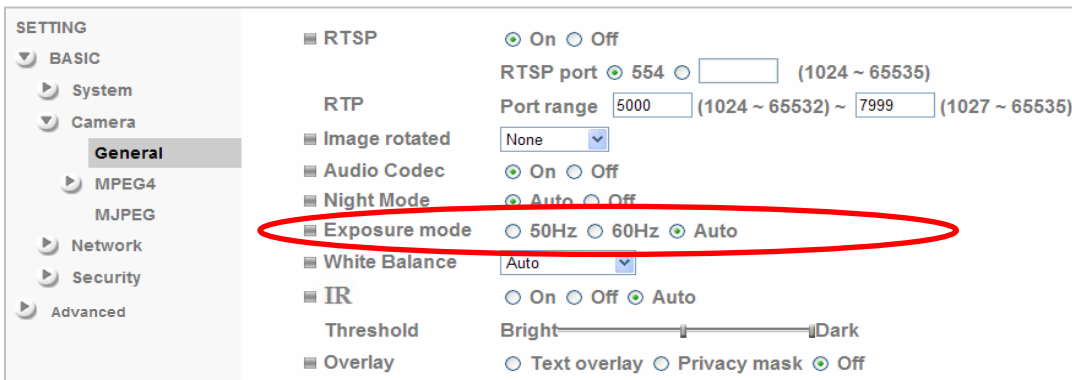
4. The monitor image will be displayed in your browser.



Change lighting environment setting

The default setting of lighting environment is Auto. This setting is for outdoor mode. If the operating environment is indoor, option 50Hz or 60Hz can be chosen according to various picture-frequency of your country. You can also just choose one of them. If the image appears flickery, change to the other.

Go to "Setting → Basic → Camera → General", choose the environment setting you wish.



Use IP Camera via Mobile Phone

1. Using IP Camera via iPhone

Select Safari function → Enter IP address in the web link → enter username and password (**default value admin/admin**) → The Zavio user interface and Live Image will show up in the middle of the screen.

2. Mobile phone viewing

a. 3G Mobile Phone Streaming Viewing

For 3G mobile phone viewing, please type “**rtsp://<IP>:<PORT>/video.3gp**” into your 3G web media player.

<IP> is the IP address of your IP camera;

<PORT> is the RTSP port of your IP camera (Default value is 554.)

Example: rtsp://100.10.10.1:554/video.3gp

b. 2.5G Mobile Phone Viewing

b1. WAP viewing

For 2.5G WAP mobile phone viewing, type “**http://<IP>/mobile.wml**” into your 2.5G web browser.

b1. Browser viewing

For 2.5G mobile phone browser viewing, type “**http:// <IP>/mobile.htm**” into your 2.5G web browser.

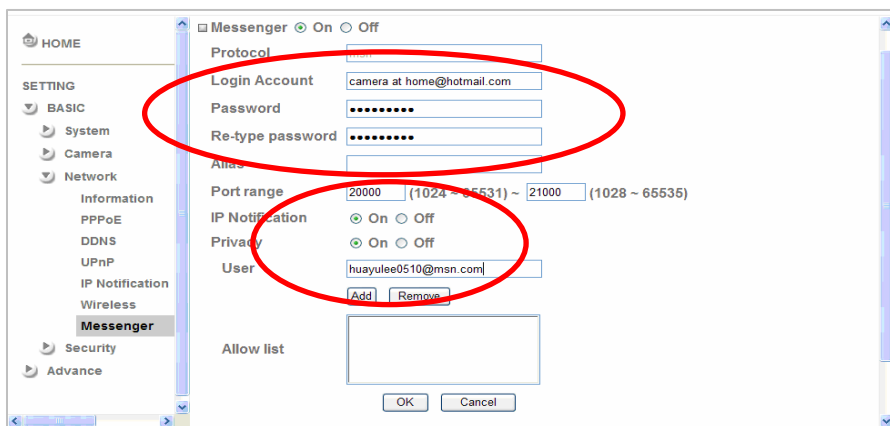
Windows Live Messenger Setting

Live video of the IP Camera can be displayed using Microsoft Live Messenger, whilst providing its public IP address to users for access via the web browser. This feature is useful especially when the IP address of the camera is dynamically assigned.

If you wish to set up MSN Messenger, enter the camera's setting page.

Go to “Setting → Basic → System → Network → Messenger”, set the Messenger option “On”

1. Create a new MSN Messenger account (e.g.: **Camera at home**) for the IP Camera
2. Enter the new MSN Messenger Login account and password within the designated boxes
3. Under the **IP Notification Option**, Click “On” to enable IP notification to the users.
4. Under the **Privacy Option**, Click “On” to create an allow list.
5. Use your existing account to login to MSN Messenger.
6. Add the new MSN Messenger account (e.g.: **Camera at home**) to your contact list.



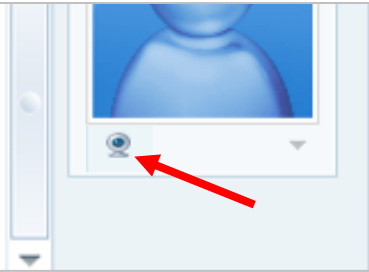
7. The IP Camera will send you a message with its Public IP and Private IP if the IP Notification Option is enabled.

8. Click on the small camera icon. Then, choose “View a new contact's webcam”.

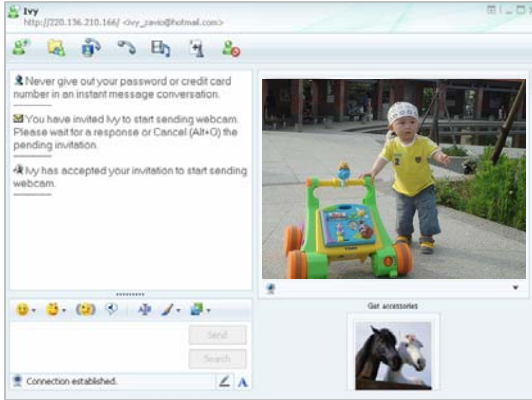
Camera at home says:

My Public IP: 122.124.4.150
URL: <http://122.124.4.150/>

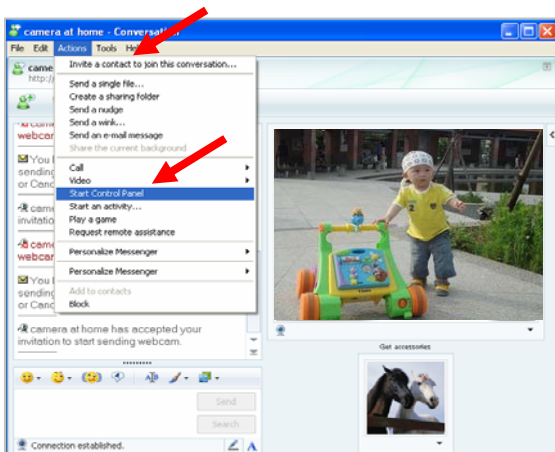
Wired-Private IP: 10.0.0.45
URL: <http://10.0.0.45/>



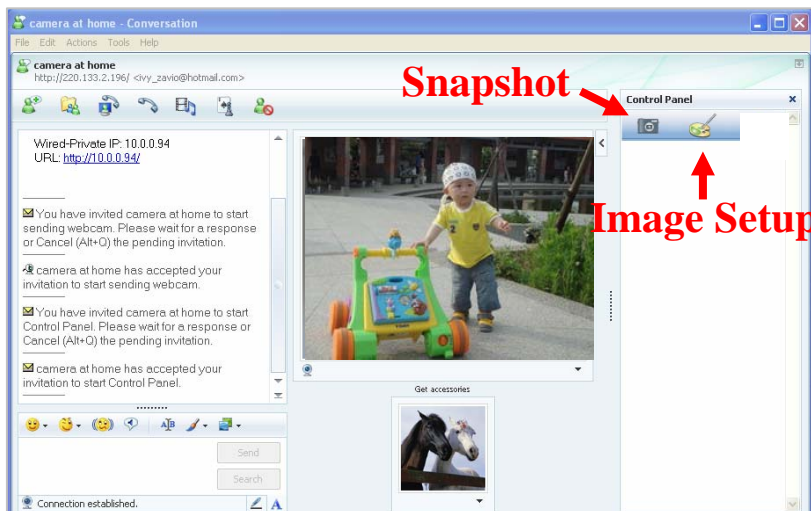
9. The IP Camera automatically accepts your invitation and its live video is displayed.



10. Click **Action** button and choose **Start control panel** to use control panel



11. You can use **Snapshot** and **Image Setup** function via MSN add-in control panel.



Access to the Internet

a. Internet connectivity of the IP camera can be established by inputting the cameras IP information within the **Information** section.

(Please go to **Setting** → **Basic** → **Network**→ **Information**)

The screenshot shows the 'Information' configuration page. On the left is a sidebar with 'HOME' at the top, followed by 'SETTING' and a list of categories: 'BASIC', 'System', 'Camera', 'Network', 'Information' (highlighted), 'PPPoE', 'DDNS', 'UPnP', 'Bonjour', 'IP Notification', 'Wireless', 'Messenger', 'Security', and 'Advance'. The main content area has a 'MAC address' field with '00:1B:FE:00:6B:E6'. Below it are two radio button options: 'Obtain an IP address automatically (DHCP)' (unselected) and 'Use the following IP address' (selected). The 'Use the following IP address' section includes fields for 'IP address' (10.0.0.60), 'Subnet mask' (255.255.255.0), and 'Default gateway' (10.0.0.1). Another radio button option is 'Use the following DNS server address' (selected), with fields for 'Primary DNS server' (168.95.192.1) and 'Secondary DNS server' (168.95.1.1). At the bottom, there is a checkbox for 'HTTP port number' (checked), a radio button for '80' (selected), and an empty text box for a custom port, with '(1024 to 65535)' in parentheses. 'OK' and 'Cancel' buttons are at the bottom.

b. Internet Connectivity of the IP Camera can be established through PPPoE (Point-to-Point Protocol over the Ethernet) by inputting the username and password from your Internet Service Provider (ISP) within the **PPPoE** section.

(Please go to **Setting** → **Basic** → **Network**→ **PPPoE**)

Note 1: Please reboot the IP Camera, after changing the PPPoE settings.

Note 2: Please turn on the DDNS and IP Notification function when using PPPoE.

The screenshot shows the 'PPPoE' configuration page. The sidebar is identical to the previous screenshot, with 'PPPoE' highlighted under the 'Network' category. The main content area starts with a 'PPPoE' checkbox (checked) and radio buttons for 'On' (selected) and 'Off'. Below are fields for 'IP address' (0.0.0.0), 'User ID' (71959519@hinet.net), 'Password' (masked with dots), and 'Re-type password' (masked with dots). There are two radio button options for DNS: 'Obtain DNS server address automatically' (selected) and 'Use the following DNS server address' (unselected). 'OK' and 'Cancel' buttons are at the bottom.

c. Internet Connectivity of the IP Camera can be established if your router is UPnP (Universal Plug and Play) enabled. The IP camera is automatically detected and added to “My Network Places” on your computer. *Please note that only Home Routers manufactured after 2006 support the UPnP function.*

c1. If your router is a UPnP Internet Gateway Device (IGD), turn on the **UPnP function** within the UPnP section. (Please go **Setting** → **Basic** → **Network**→ **UPnP**)

Note: If you turn on the UPnP Port Forwarding function, RTSP (Real Time Streaming Protocol) Port information will change to the illustrated value below.

c2. If your router is not a UPnP Internet Gateway Device, please setup Port Forwarding or Port Mapping

Note 1: Home Routers manufactured before 2006 do not support UPnP IGD function.

Note 2: Enterprise Routers do not support UPnP IGD function.

External Port	Internal Port	Protocol	To IP Address	Enabled
---	---	---	192.168.1.51	<input checked="" type="checkbox"/>
---	---	---	192.168.1.100	<input checked="" type="checkbox"/>
---	---	---	192.168.1.0	<input type="checkbox"/>
---	---	---	192.168.1.0	<input type="checkbox"/>
---	---	---	192.168.1.0	<input type="checkbox"/>
5150	5150	Both	192.168.1.100	<input checked="" type="checkbox"/>
5160	5160	Both	192.168.1.100	<input checked="" type="checkbox"/>
13247	13247	Both	192.168.1.10	<input checked="" type="checkbox"/>
514	514	Both	192.168.1.10	<input checked="" type="checkbox"/>
5900	5900	Both	192.168.1.10	<input checked="" type="checkbox"/>
2000	2000	Both	192.168.1.50	<input type="checkbox"/>
0	0	Both	192.168.1.0	<input type="checkbox"/>
0	0	Both	192.168.1.0	<input type="checkbox"/>
0	0	Both	192.168.1.0	<input type="checkbox"/>
0	0	Both	192.168.1.0	<input type="checkbox"/>

