

Central Monitoring by Center V2

With Center V2, central monitoring station (CMS) can be deployed immediately because it brings multiple GV-Systems together into an integrated interface, allowing the operator to manage several systems from one point of control. The basic feature of Center V2 is to view live video, and receive video evidence (in an attachment format) when any alerts are sent to the Center V2. This helps the remote-end operator easily determine the nature of the alarm.

Installing Center V2

There are two versions of Center V2. The standard version, coming with the system software, can serve up to **5** subscribers and **80** channels at a time. The professional version can serve up to **500** subscribers and **800** channels. For professional one, see *CMS User's Manual*.

Before installation, make sure your computer meets the following minimum requirements.

The standard version:

OS	Windows 2000, Windows XP, Server 2003
CPU	Pentium 4, 2.0G
Memory	256 MB RAM
Hard Disk	60 GB
VGA	NVIDIA GeForce II 32MB, 1024 x 768 screen resolution
Network	TCP/IP

To install Center V2, follow these steps:

1. Insert the Surveillance System Software CD to your CMS's (Central Monitoring Station) computer. It will run automatically, and a window appears.
2. Select the **Install V8.0.0.0. System** item.
3. Click **CenterV2**, and follow the on-screen instructions.

The Center V2 Window

After the installation, start the application from the Windows Start menu. The following monitoring window will appear. No images will appear until you add and connect to subscribers.



Figure 9-1 The Center V2 Window

The controls on the Center V2 window:

No	Name	Description
1	Monitoring Window	Displays live video.
2	Status Panel	Indicates the date, time, remaining disk space, and the total number of online channels versus available channels.
3	Find A Subscriber	Type the desired ID in the Current Subscriber field and click this button to search.
4	Subscriber List	Displays subscribers' ID names and online status. Blue Icon: Indicates the subscriber is online. White Icon: Indicates the subscriber is off-line. Alarm Icon: Indicates either motion has been detected or the I/O has been triggered at the subscriber's site.

5	Event List	Accesses Event Log and Event List.
6	SMS	Configures the SMS service.
7	I/O Device	Configures and forces output devices at Center V2.
8	Screen Division	In the 1024 x 768 resolution, you can select 6, 15, or 24 screen divisions for a single monitor; 9, 25, or 36 screen divisions for dual monitors. In the 1280 x 1024 resolution, you can select 6, 12, or 24 screen divisions for a single monitor; 9, 20, or 42 screen divisions for dual monitors. For resolution, see <i>Layout Settings</i> on page 193.
9	Host Info	Displays the connection status of subscribers.
10	Preference Settings	Brings up these options: System Configure, Notification, Password Setup and E-mail Setup.
11	Exit	Closes or minimizes the Center V2 window.
12	Accounts	Adds, deletes or modifies subscriber accounts.
13	Refresh Channel	Refreshes the connection status.
14	Next Page	Displays the next page of camera views.
15	Previous Page	Displays the previous page of camera views.
16	Flag	Flags an event for later reference.
17	Clip	Indicates an event coming with an attachment. Double-click the event to open the attached video file.
18	ID	Indicates a subscriber's ID.
19	Event Type	Indicates the event type: Alarm, Attachment, Connection, Login/Logout, Motion, System, and Trigger.
20	Message	Indicates associated information for each event type.
21	Message Time	Indicates when Center V2 receives an event.
22	Start Time	Indicates when an event happens at the subscriber's site.

A list of Types and Messages will be displayed on Center V2:

Type	Message
Motion	Camera xx detected motion.
Trigger	Module xx triggered.
Connection	Camera xx video lost; Module xx I/O lost; Network abnormal; Fail to login to dispatch server; Dispatch server is shutdown; Video signal of xx has resumed; Module xx has returned to normal; Failed to login SMS server; Failed to send short message; SMS server is shutdown.
Alarm	Disk Full; Restarted Failed; Multicam Closed; There isn't enough space for recording; Multicam Surveillance System has been closed; An unexpected error occurred in Multicam Surveillance System. (Error Code: 1 or 2); There is an intruder; Object Missing; Unattended Object; Alert Message of POS; Scene Change.

System Start/end service; IP change; Record failed; Status change of monitoring camera. On: xx Off: xx /(By Schedule); Stop/start all cameras monitoring; Start/stop I/O Monitoring. /(By Schedule); Schedule start; Schedule stop. All monitoring device are stop too; Start monitoring all type events; Stop monitoring all type events; Subscriber session is not established. Wait-time expired; Unexpected logout before subscriber session is completed.

Attachment Record file of Camera xx.

Note: Error Code 1 indicates a codec error; Error Code 2 indicates that users can't write or record any data due to HD failure or user privilege.

Creating a Subscriber Account

Before starting Center V2, add one subscriber to the center at least. The standard version of Center V2 only allows **5** subscriber accounts. On the Center V2 window, click the **Accounts** button (No. 12, Figure 9-1). The Address Book window appears.

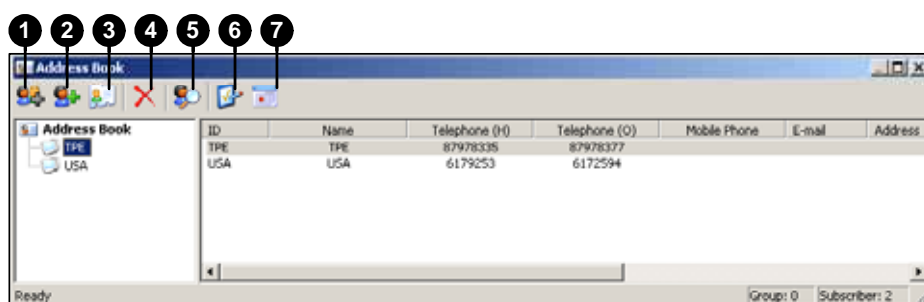


Figure 9-2 Subscriber Information

The buttons of the toolbar:

No.	Name	Description
1	Add A Group	Adds a group.
2	Add A Subscriber	Adds a subscriber
3	View/Edit Subscriber	Highlight one subscriber and click this button to open Subscriber Address Book for viewing and editing.
4	Delete A Group/Subscriber	Highlight a group or a subscriber and click this button to delete it.
5	Find A Subscriber	Searches a subscriber account.
6	Subscriber Settings	Highlight one subscriber and click this button to configure the settings of video and alert formats.
7	Subscriber Schedule	Sets up subscription schedules.

Creating a Subscriber

1. Click the **Add A Group** button (No. 1, Figure 9-2) to create a group.
2. Click the **Add A Subscriber** button (No.2, Figure 9-2). The Subscriber Address Book dialog box appears.

Figure 9-3 Address Book of a subscriber

3. Enter a login ID and password (required). Those will be the ID and password for the subscriber to log in to the Center V2. See Figure 9-12.
4. Enter the subscriber's contact information in the rest of fields (optional).
 - If you wish to send e-mail alerts to this subscriber, enter its e-mail address. For e-mail settings, refer to *E-Mail Alerts*, later in this chapter.
 - If you wish to send SMS alerts to this subscriber, enter its country code and mobile number. For SMS server settings, refer to *SMS Alerts*, later in this chapter.
5. Click the **OK** button to save the above settings. You will be prompted to this dialog box.

Figure 9-4 Subscriber Settings

6. The options in the dialog box are discussed below. You may accept the default settings here,

and edit them later by clicking the **Subscriber Settings** button (No. 6, Figure 9-2) on the toolbar. When you click the **OK** button, the subscriber account then is created.

Subscriber Settings

[Monitor Option]

- Image Size:** Sets the video size from the subscriber. The following chart tells how the image size set at the subscriber corresponds to different settings at Center V2. For example, if Center V2 wants to receive 720 X 240 image, the subscriber must set the video resolution to 720 x 480 or 720 x 240.

Subscriber Center V2	640 x 480	640 x 240	320 x 240	720 x 480	720 x 240	720 x 576
Normal	320 x 240	320 x 240	320 x 240	360 x 240	360 x 240	360 x 288
Middle	640 x 240	640 x 240	320 x 240	720 x 240	720 x 240	720 x 288
Large	640 x 480	640 x 240	320 x 240	720 x 480	720 x 240	720 x 576

- Auto Record Video:** Center V2 automatically records events based on the following Record Mode.

[Record Mode]

- Live Mode:** Streams live video to Center V2. Make sure you have enough bandwidth to receive video in live. To set the maximum time of a video clip to be sent to Center V2, click the **Settings...** button. The more the set minutes, the bigger the file size; and therefore more time is required to send the file over Internet.
- Attachment Mode:** A defined time of event will be recorded before sending to Center V2. The attachment will be sent out immediately once your subscriber is connected to Center V2. The Attachment Mode also provides several options associated with the attachment. Click the **Settings...** button to bring up the Record Settings – Attachment Mode dialog box. See *Attachment Mode Settings* below for further setup.
- Both (Live & Attachment):** Sends both live and attachment file.

Attachment Mode Settings

In the Subscriber Settings dialog box (see Figure 9-4), select **Attachment Mode**, and click the **Settings...** button beside. This dialog box appears.

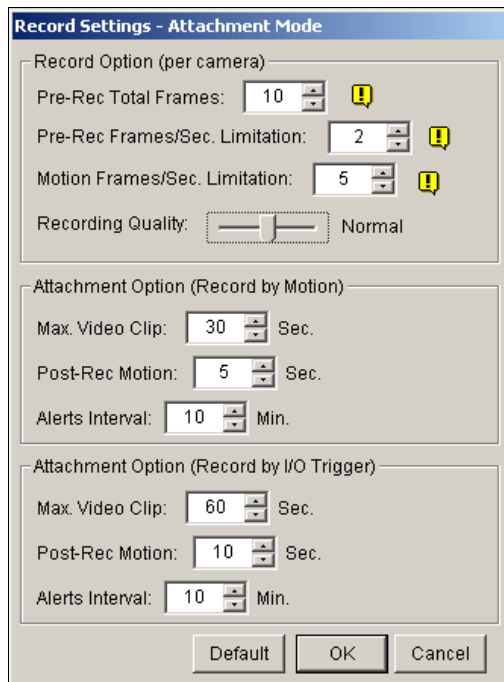


Figure 9-5 Recording Setting

[Record Options (per camera)]

- **Pre-Rec Total Frames:** Determines the total pre-recorded frames in a video attachment.
- **Pre-Rec Frames/sec Limitation:** Determines the frame rate in the pre-recorded period.

Note: Dividing the Pre-Rec Total Frames by Pre-Rec Frames/Sec Limitation, you will get total time of the video attachment.

- **Motion Frames/sec Limitation:** Determines the frame rate of the video to be sent as an attachment.
- **Recording Quality:** Use the slider bar to adjust the video quality in 3 levels.

[Attachment option (Record by Motion)] Defines the duration of the video attachment delivered upon motion.

- **Max video Clip:** Determines the duration of the video attachment.
- **Pos-Rec Motion:** Determines how many more seconds of video to be sent when motion stops.
- **Alerts interval:** Determines the interval between sent motion events

[Attachment option (Record by I/O trigger)] Defines the duration of the video attachment delivered upon I/O trigger.

Creating a Subscriber Schedule

The Center V2 operator can create schedules to monitor subscription status. When subscribers don't log in Center V2 on the programmed time, the operator and subscribers will get notified.

- When a subscriber doesn't log in Center V2 on time, this message will appear on the Event List: *Subscriber session is not established. Wait-Time expired.*
When a subscriber logs out suddenly during a service time, this message will appear: *Unexpected logout before subscriber session is completed.*
- To activate the computer and output alarm to notify the operator while a SMS and E-mail message being sent out to a subscriber, use the **Notification** feature. For details, see *Notification Settings* later in this chapter.

To set up a schedule

1. On the Center V2 window, click the **Accounts** button (No. 12, Figure 9-1) to display the Address Book window.
2. Highlight one subscriber, and click the **Subscriber Schedule** (No. 7, Figure 9-2) to display the Schedule window.

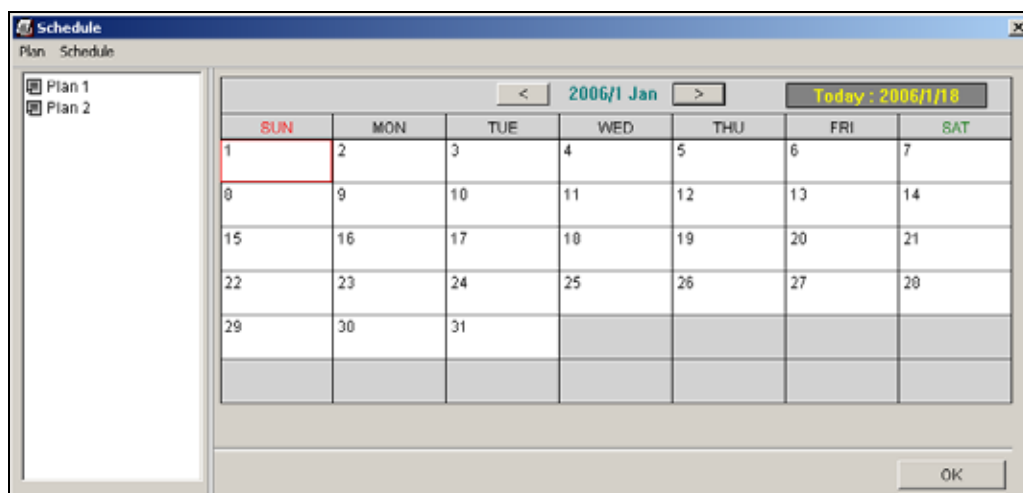


Figure 9-6

3. On the Schedule window menu, select **Setup Wizard** and follow the Wizard instructions.
4. When the following window appears during the instructions, drag the mouse over the Login timeline to define the Start and End time.

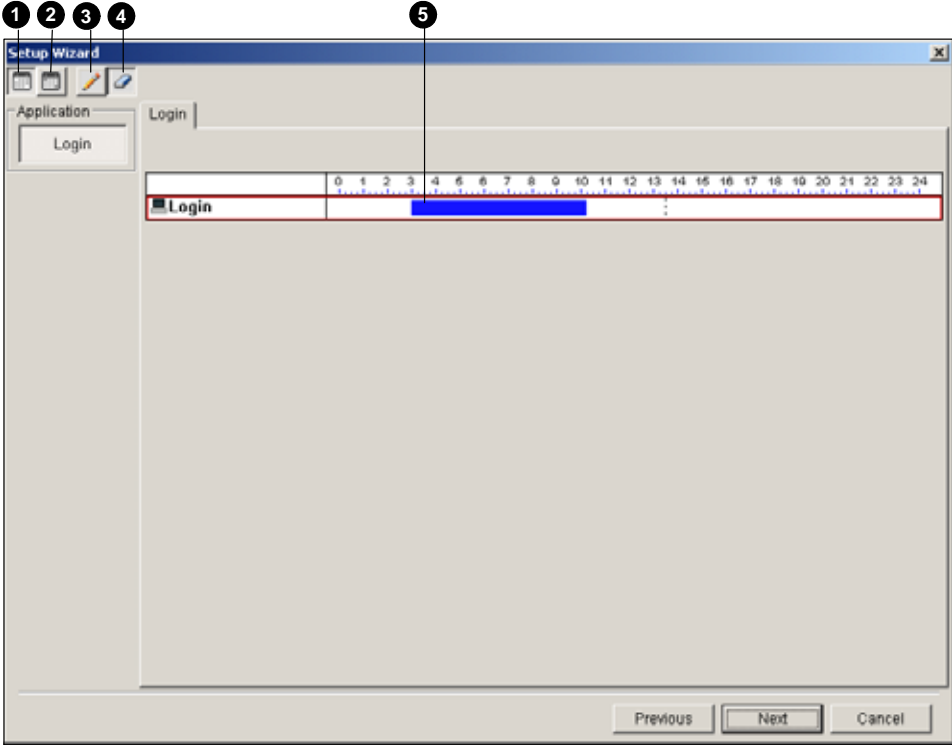


Figure 9-7

The controls on the Setup Wizard:

No.	Name	Description
1	Include	Displays task time.
2	Exclude	Displays non-task time.
3	Add	Draws task time.
4	Erase	Erase task time.
5	Login	Timeline.

- 5. Click **Next** when you finish the schedule. The Setup Wizard dialog boxes pops up again, and then click **Finish** to exit.

Configuring Center V2

On the Center V2 window, click the **Preference Settings** button (No. 10, Figure 9-1), and select **System Configure** to display the following Preference window. This window contains these tabs: (1) General, (2) Layout, (3) Network, (4) Record and (5) Dispatch Server.

[General]

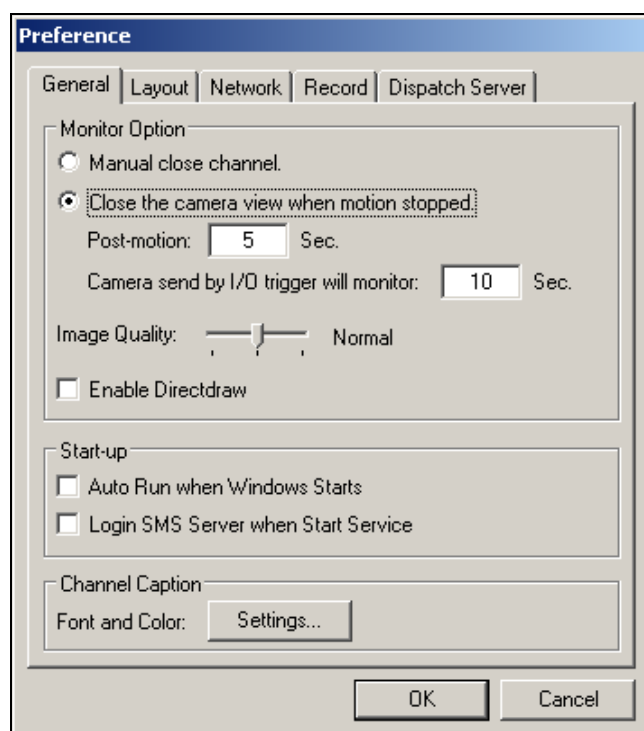


Figure 9-8 Preference- General Settings

[Monitor Option]

- **Manual close channel:** Closes the triggered camera view manually.
- **Close the camera view when motion stopped:** Closes the triggered camera view automatically when motion stops.

Post Motion: Specifies the duration of the camera view remaining on the monitoring window after motion stops.

Camera send by I/O trigger will monitor: Specifies the duration of the camera view remaining on the monitoring window when an I/O device is triggered.
- **Image Quality:** Adjusts the video quality. Moving the slide bar to the right side for the better quality and the bigger image size.
- **Enable Direcdraw:** Enables an enhanced image performance for live video.

[Start-up]

- **Auto Run when Windows Starts:** Automatically runs Center V2 when Windows starts.
- **Login SMS Server when Start Service:** Automatically logs in SMS Server when Center V2 starts. You will be prompted to enter the IP address, Port, ID and Password of the SMS server.

[Channel Caption]

- **Font and Color:** Click the **Settings....** button to change the font and color of the captions.

[Layout]

This function transfers the Event List window to a separate computer while the monitoring windows are displayed in the current computer. For the application, your VGA card must support Twin View (discussed in Chapter 11), and your Windows desktop must be properly set up for the display across two computer monitors.

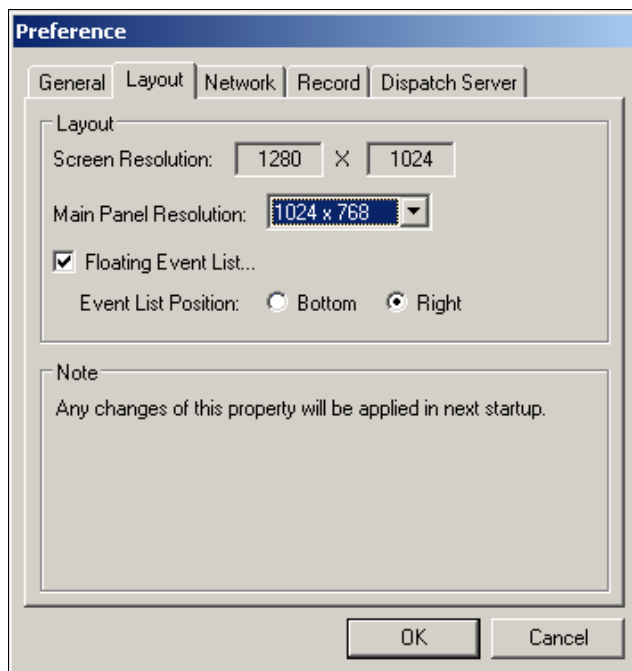


Figure 9-9 Preference-Layout

- **Screen Resolution:** Detects the current screen resolution on your PC.
- **Main Panel Resolution:** Sets the Center V2 panel resolution to 1024 x768 or 1280 x1024. This function is only available when your PC screen resolution is higher than 1280 x 1024.
- **Floating Event List:** Moves the Event List window to a separate monitor at the bottom or right side.

[Network]

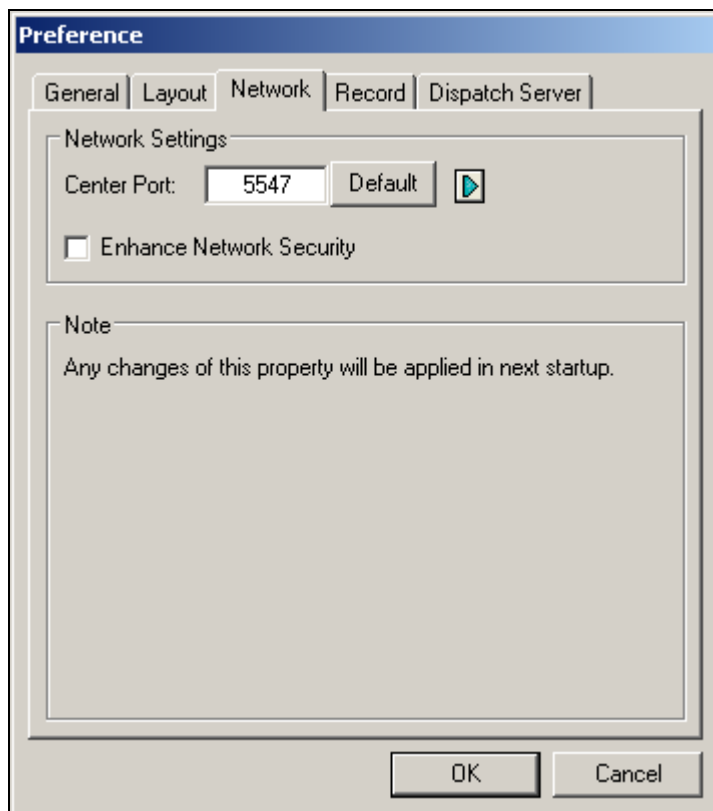


Figure 9-10 Preference- Network Settings

- **Center Port:** Indicates the communication port used by the Center V2. To automatically configure the port on your router by UPnP technology, click the **Arrow** button. For details, see *UPnP Settings*, Chapter 6 in the *User's Manual*.
- **Enhance Network Security:** Applies enhanced security for Internet. Note when the feature is enabled, all subscribers using earlier version than version 7.0 cannot access the Center V2 anymore.

[Record]

The feature allows you to assign a path to store video files.

Click the **Add New Path** button  to assign a path; click the **[X]** button to delete a path.

If the Recycle item is checked, the system will delete old files when storage space falls short of 800MB; if not checked, Center V2 will stop recording when storage space falls short of 800MB.

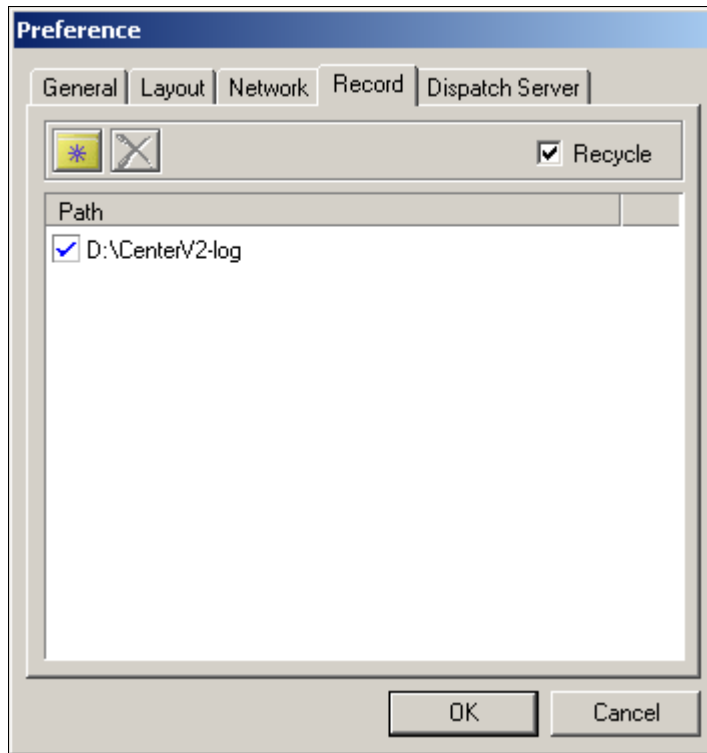


Figure 9-11 Preference-Record

Note: Every time when the Recycle function is activated, the files of 400MB will be deleted.

Connecting to Center V2

To configure the GV-System in order to access the Center V2 remotely through a network connection, follow these steps:

1. In the Main System, click the **Network** button, and select **Connect to Center V2**. This dialog box appears.



Figure 9-12 Connect to Center V2

2. Enter the IP address of the Center V2, the user ID and password created in Center V2. See *Creating a Subscriber's Account* earlier in this chapter.
3. Click the **Connect** button. When the connection is established, Center V2 will start receiving videos or attachments from the subscriber.

Normal Mode Setup

To further define the communication conditions between the subscriber and Center V2, select **Normal Mode** on the Connect to Center V2 dialog box (Figure 9-12), and then click the **Advance** button for setup. The setup window includes these tabs: (1) General, (2) Camera, (3) Other and (4) I/O Device.

[General]

The settings define the retry modes and communication ports between GV-System and Center V2.

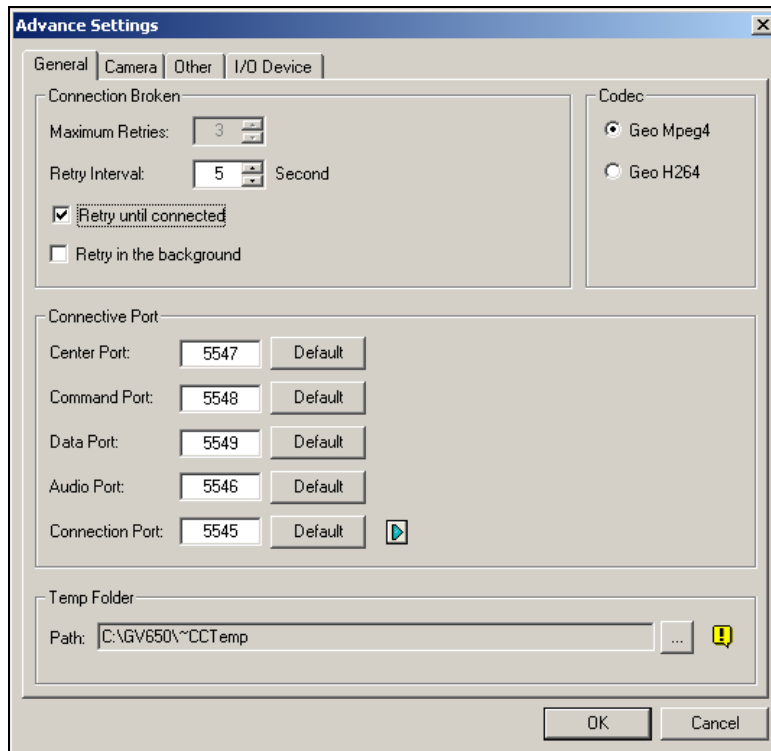


Figure 9-13 Advance Settings

[Connection Broken]

- **Maximum Retries:** Sets the number of retries if connection is not immediately available.
- **Retry Interval:** Sets the time interval between each retries.
- **Retry until connected:** Keeps GV-System on trying until connected to Center V2.
- **Retry in the background:** Hides the retries in the background.

[Codec] Selects **Geo Mpeg 4** (default) or **Geo H264** as the compression method for video sent to Center V2. For details, see *Recording Codec Options* in Chapter 1

[Connective Port] Displays ports used for communication. It is recommended to keep the default settings, unless otherwise necessary. The Center Port number must match the Center Port assigned in Center V2, as shown in Figure 9-10.

To automatically configure these ports on your router by UPnP technology, click the **Arrow** button. For details, see *UPnP Settings* in Chapter 5.

[Temp Folder] Attachments are temporarily stored in this folder while waiting to be sent to Center V2. In case the connection is broken, attachments meant to be sent to Center V2 could be found here. Once the connection is back to normal, events saved in the Temp Folder will be sent out immediately.

[Camera]

The settings define which camera condition to notify Center V2. To configure the event type, first disable the **Monitoring all type events** option in Figure 9-12.

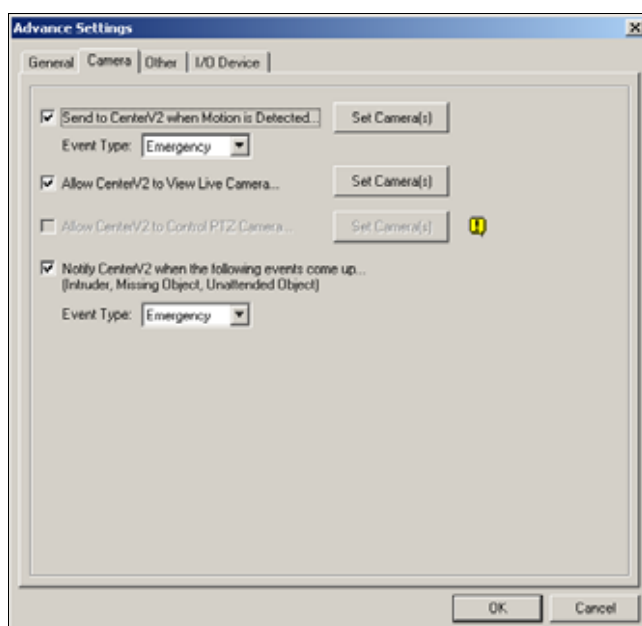


Figure 9-14 Advanced Settings- Camera

- **Send to Center V2 when Motion is Detected:** Sends the video to Center V2 when motion is detected. Click the **Set Camera(s)** button to assign cameras for the application.

Event Type: If the subscriber wants Center V2 always to get notified of motion detection, select **Emergency**. If the subscriber wants Center V2 to get notified of motion detection only when an assigned input is triggered, select **Normal**.
- **Allow Center V2 to View Live Camera:** Gives Center V2 the privilege to view your cameras at any time. Click the **Set Camera(s)** button to assign cameras for the application.
- **Allow Center V2 to Control PTZ Camera:** Gives Center V2 the privilege to control your PTZ camera. Remember to properly set up camera mapping first. See *Mapping PTZ Cameras* in Chapter 1.
- **Notify Center V2 when the following events come up:** Notifies Center V2 when any of these alert events occur: Intruder, Missing Object, Unattended Object and Scene Change.

Event Type: If the subscriber wants Center V2 always to get notified of these alert events, select **Emergency**. If the subscriber wants Center V2 to get notified of these alert events only when an assigned input is triggered, select **Normal**.

Note: To set an input trigger for the notification of **Normal** events, see *Security Service, [I/O Device]* later in this chapter.

[Other]

Define other communication conditions between GV-System and Center V2.

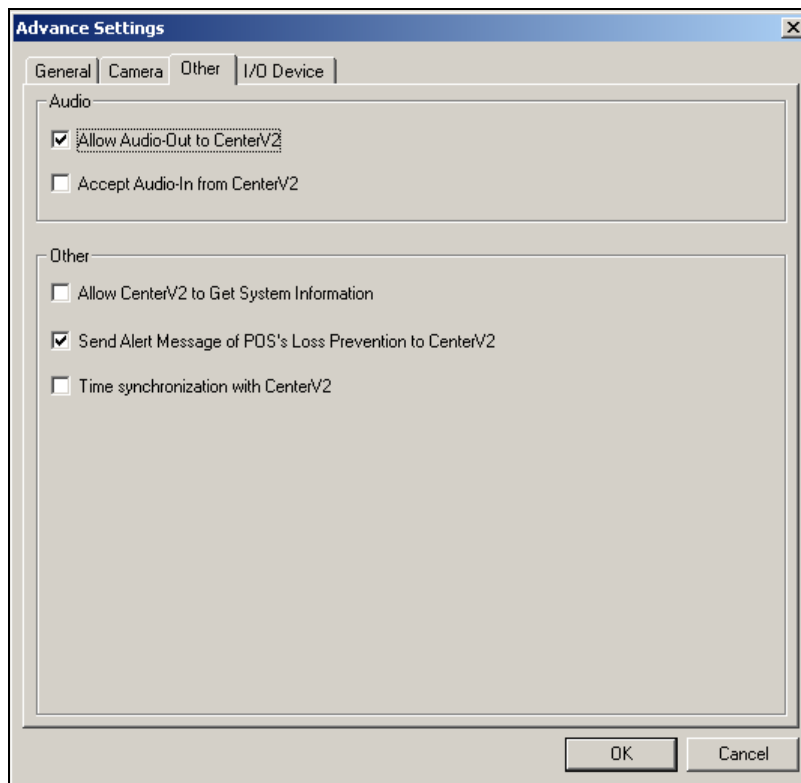


Figure 9-15 Advanced Settings- Other

[Audio] Applying any of these options here may generate privacy issues. Think before you make any selection.

- **Allow Audio-Out to CenterV2:** Allows Center V2 to listen to the audio from GV-System.
- **Accept Audio-In from CenterV2:** Allows CenterV2 to use the talkback feature when emergency occurs.

[Other]

- **Allow Center V2 to Get System Information:** Allows Center V2 to get system information on your GV-System.
- **Send Alert Message of POS's Loss Prevention to Center V2:** Notifies Center V2 about the events of POS Loss Prevention.
- **Time synchronization with Center V2:** Enables the time increment/decrement of minutes and seconds at the subscriber site to match the time at the Center V2.

[I/O Device]

The settings define which I/O condition to notify Center V2. To configure these settings, first disable the **Monitoring all type events** option in Figure 9-12.

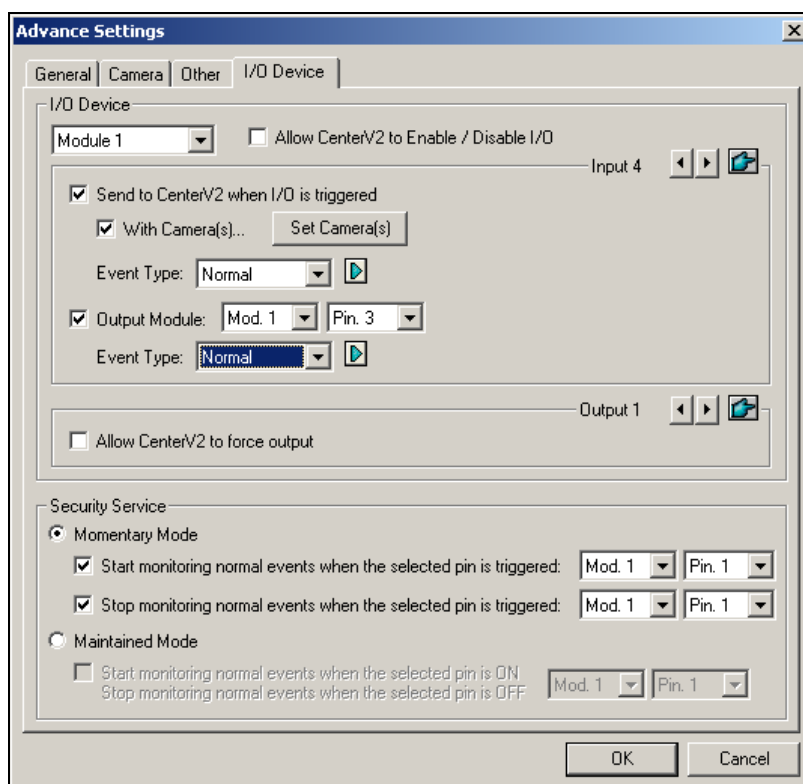


Figure 9-16 Advanced Settings- I/O Device

[I/O Device] Notifies the Center V2 when I/O devices are triggered. Use the **Arrow** buttons to configure each I/O device, or click the **Finger** button to apply to all I/O devices.

- **Allow Center V2 to Enable / Disable I/O:** Allows Center V2 manually arm/disarm any I/O devices at the subscriber's site without interrupting the monitoring.

For example, when an alarm is triggered at the subscriber site, the Center V2 operator can turn it off remotely before arriving at the site. Meanwhile, GV-System still remains on monitoring.
- **Send to Center V2 when I/O is Triggered:** Notifies Center V2 when any selected input is triggered.

With Camera(s): Sends the camera video to Center V2 when the selected input is triggered. Click the **Set Camera(s)** button to assign cameras for the application.

Event Type: If the subscriber wants Center V2 always to get notified of the input trigger, select **Emergency**. If the subscriber wants Center V2 to get notified of the input trigger only when an assigned input is triggered, select **Normal**.

Right Arrow button: Sets the delay time to notify Center V2 of input trigger. This feature is only available when the **Normal** type is chosen.

- ⊙ **Exit Delay:** While the system is activated, this feature provides an interval of time for the subscriber to exit the premises. During this time, the specified input (e.g. a exit/entry door) is inactive. Once the exit delay expires, the input will be fully armed.
- ⊙ **Entry Delay:** While the system is activated, this feature provides an interval of time for the subscriber to enter the premises. During this time, the specified input (e.g. a exit/entry door) is inactive so that the subscriber can disarm the system. If the subscriber fails to do, once the entry delay expires, Center V2 will get notified of the input trigger.

- **Output Module:** Enables the assigned output module when the selected input module is triggered.

For this example, when the I/O Device (Module 1, Input 4) is triggered, the Output (Module 1, Pin 3) will be activated simultaneously.

Right Arrow button: Sets the delay time to trigger the assigned output module.

Event Type: If the subscriber wants Center V2 always to get notified of the output trigger, select

Emergency. If the subscriber wants Center V2 to get notified of the output trigger only when an assigned input is triggered, select **Normal.**

Note:

1. To set an input trigger for the notification of **Normal** events, see *[Security Service]* below.
2. The delay settings in **Send to Center V2 when I/O is triggered** and **Output Module** allow you to enter your premises and disable input/output module before it is activated.

To disable prior I/O settings, the subscriber may exit the connection to Center V2 or use the **Stop monitor normal event when selected pin is Triggered** feature in Figure 9-16.

- **Allow Center V2 to Force Output:** Allows Center V2 to manually force output devices installed at the subscriber's site.

[Security Service] Supports two types of access control systems: Momentary and Maintained Mode.

- **Momentary Mode:** Pushbutton switches that are normally open and stay closed only as long as the button is pressed. Momentary switches allow turn-on or turn-off from multiple locations. For example, certain premises have a designated entry/exit door. When the staff enters the entry door, the system starts monitoring. When the staff leaves from the exit door, the system stops monitoring.

- **Maintained Mode:** Push-on/push off button switches that stay open until thrown, and then stay closed until thrown again. Maintained switches are convenient for only one switch location. For example, in the business hour when the door is opened, the system stops monitoring; in the non-business hour when the door is closed, the system starts monitoring.

Panic Button Setup

You may set up a panic alarm button at your GV-System. In case of emergency, press the button immediately to send the associated video to Center V2. To set up a panic alarm, select **Panic Button** in the Connect to Center V2 dialog box (Figure 9-12), and click the **Advance** button. This dialog box appears.

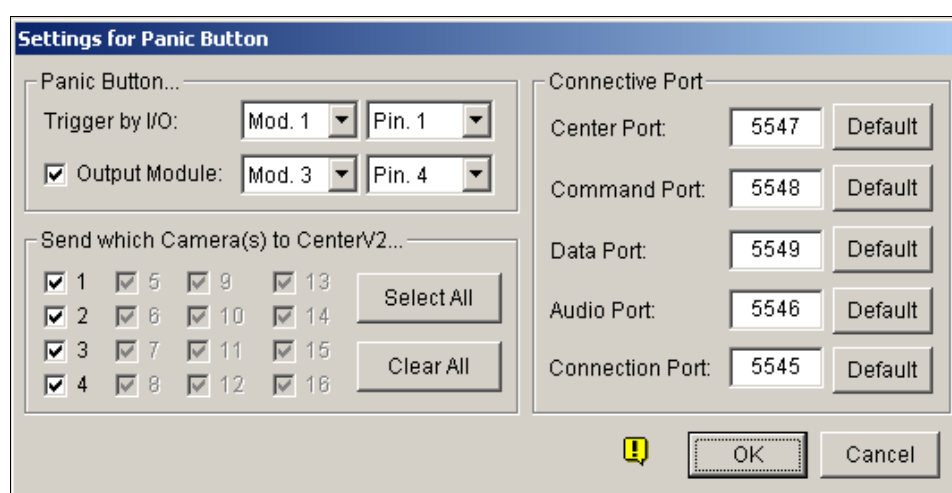


Figure 9-17 Settings for Panic Button

[Panic Button] Assigns an installed input device to be the panic alarm button.


- **Trigger by I/O:** Assigns an input module and a pin number.
- **Output Module:** Enables an assigned output module when the panic button is pressed. For this example, when the panic button (Module 1, Pin 1) is pressed, the output module (Module 3, Pin 4) will be triggered simultaneously.

[Send which Camera(s) to Center V2] Select which camera video should be sent to Center V2 when the panic alarm button is pressed.

[Connective Port] The communication ports used by Center V2. It is recommended to keep all defaults, unless otherwise necessary.

Detecting Input Status

The feature is designed to monitor all inputs for a change of state whenever the subscriber starts the Center V2 monitoring. A change from the previously defined state (N/O to N/C or N/C to N/O) will activate an alarm condition.

Click  on the Connect to Center V2 dialog box (Figure 9-12). For details, see *Detecting Input Status* in Chapter 2.

Event Log Browser

The Event Log Browser allows you to locate a desired event coming from subscribers. On the Center V2 window, click the **Event List** button (No. 5, Figure 9-1) and select **View Event Log** to display the following window.

Tip: You can quickly access the Event Log of a specific subscriber, instead of filtering all events. Right-click one subscriber on the Subscriber list (No. 4, Figure 9-1), select **Event Log** and then click a desired log type.

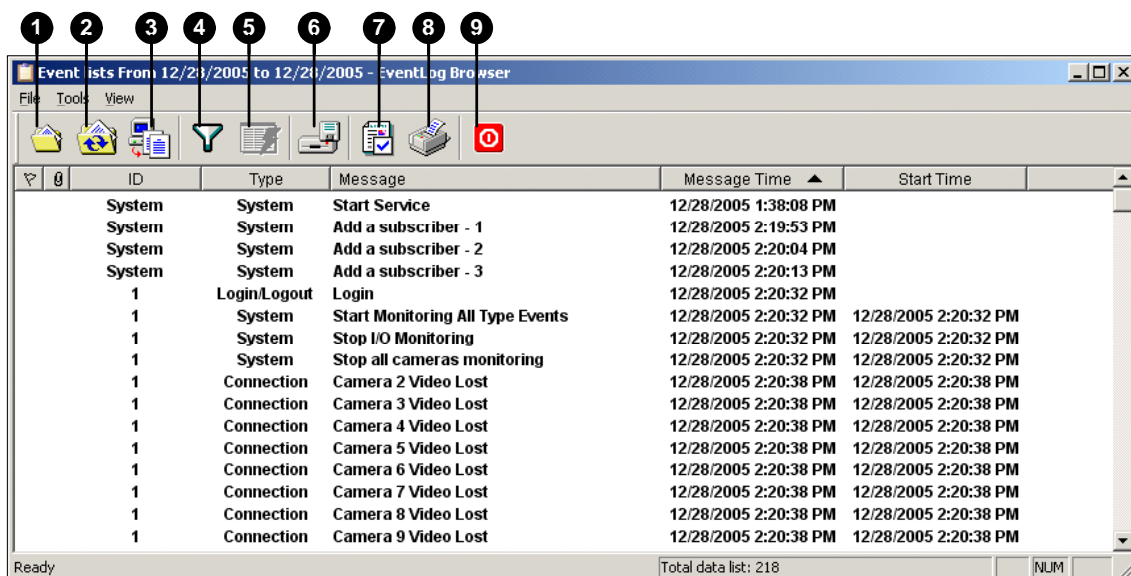


Figure 9-18 Event Log Browser

The buttons on the Event Log Browser:

No.	Name	Description
1	Open	Opens an event log.
2	Reload	Refreshes the event log manually
3	Start/Stop Synchronous EventLog	Refreshes the event log automatically.
4	Filter	Defines the search criteria.
5	Refresh the Filter Result	Refreshes the filter result.
6	Backup	Exports the current event list and video files.
7	Page Setup	Creates header and footer on the printout of Event Log.
8	Print	Prints the current event list.
9	Exit	Exits the browser.

Opening the Event Log

Click the **Open** button (No. 1, Figure 9-18) to launch the following Open DataBase dialog box. Define a time period, select the type of log, and click **OK** for search. Events matching the search criteria will be loaded to the Event Log Browser window.

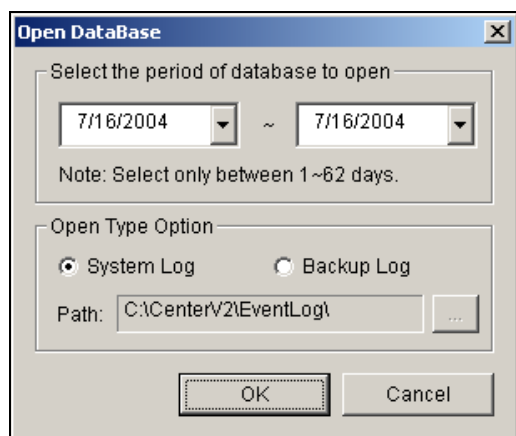


Figure 9-19 Open Database

Filtering the Event Log

Click the **Filter** button (No. 4, Figure 9-18) to bring up the following Eventlog -- Filter window. This option allows you to perform a search based on criteria.

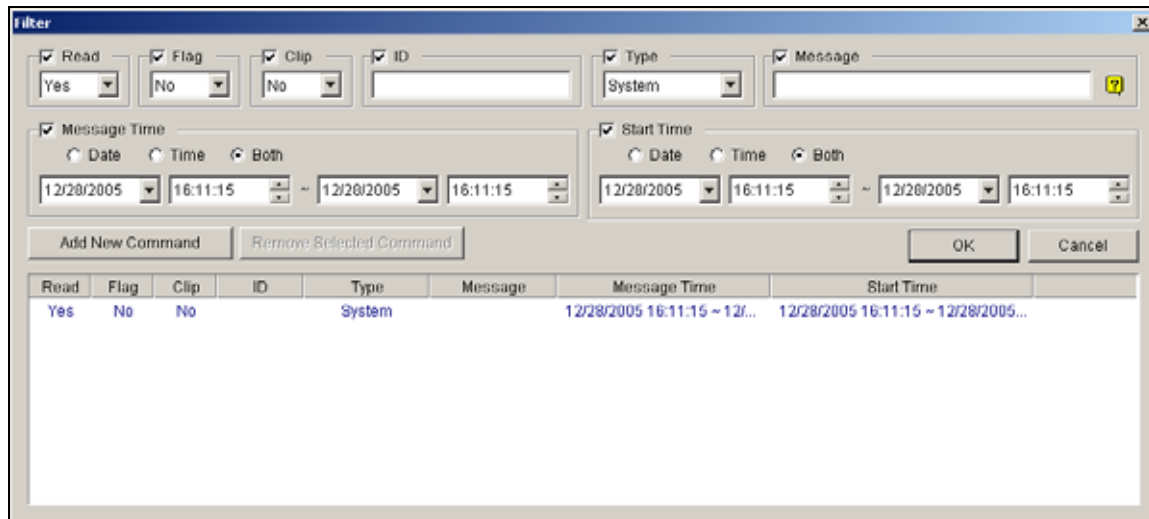


Figure 9-20 Eventlog-Filter

Filters

- **Read:** Searches the events read in Center V2.
- **Flag:** Searches the events flagged important.
- **Clip:** Searches the events containing video attachments.
- **ID:** Searches the events from a specific subscriber.
- **Type:** Searches the events based on the nature of events.
- **Message:** Searches the events by keywords.
- **Message Time:** Searches the events by the arriving time or date to Center V2.
- **Start Time:** Searches by the starting time of the events occurred at the subscriber site.

Applying Multiple Filters

This option allows you to define several filter commands for search. Click the **Add New Command** button to add a new filter command. When you click **OK**, all events matching the defined commands will be listed on the Event Log Browser.

Removing Filters

Select the filter command you wish to remove from the filter list, and then click the **Remove Selected Command** button to remove it.

Event Log Settings

On the Center V2 window, click the **Event List** button (No. 5, Figure 9-1), and select **Event Log Setting** to display the following dialog box:

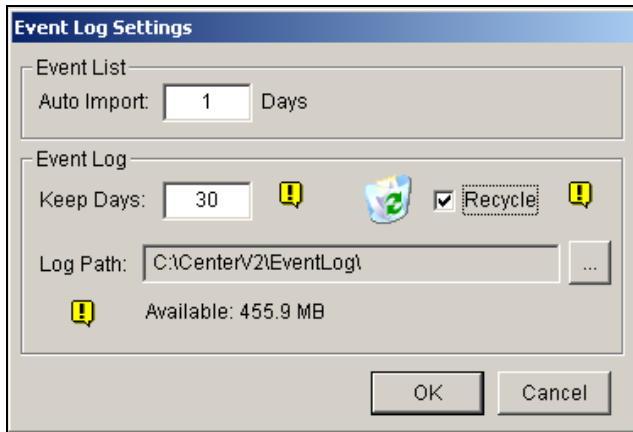


Figure 9-21 Event Log Settings

[Event List]

- **Auto Import:** Specify the number of days to be loaded when Event Log Browser is launched.

[Event Log]

- **Keep Days:** Enter the number of days to keep log files.
- **Recycle:** Delete the files of the oldest day when storage space is lower than 500MB.
- **Log Path:** Click the [...] button to assign a storage path.

Page Setup

You can create the Footer and Header on the printout of Event Log.

1. On the Event Log Browser, click the **Page Setup** button (No. 7, Figure 9-18) to display this dialog box.
2. Check the items and type the information you want to print out.
3. Click **OK** to apply the settings.

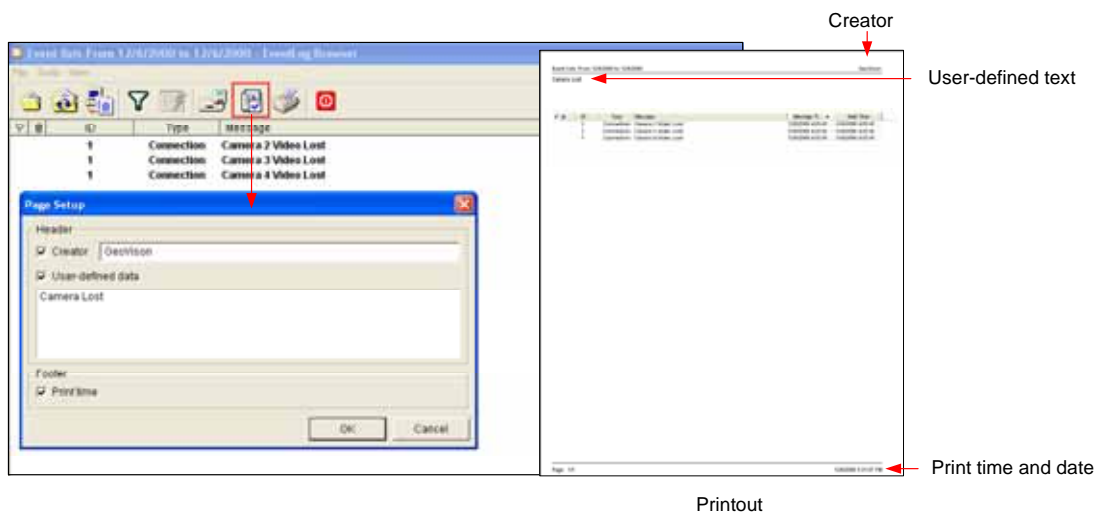


Figure 9-22

Monitoring and Managing Subscribers

This section describes how to monitor and manage subscribers in these parts: (1) Showing I/O Status, (2) I/O Activation (3) Camera/Audio Control, (4) Camera Monitor (5) Viewing Subscriber Information and (6) Subscription Service Options.

Showing I/O Status

You can view the status of input devices at the subscriber's site, as well as forcing the outputs.

On the Subscriber List (No. 4, Figure 9-1), right-click one online subscriber, and then select **Show I/O status** to display this window.

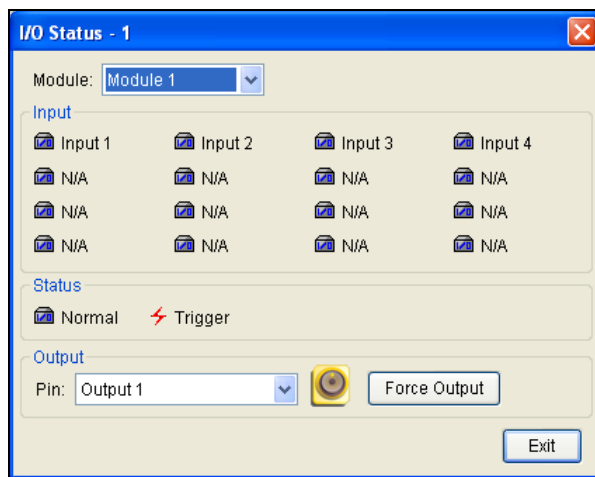


Figure 9-23

[Module] Select a module from the drop-down list.

[Input] Indicates the status of input devices of the selected module. The blue icon means the input is deactivated; the red lightening icon means the input is activated.

[Output] To force an output installed at the subscriber site, select a desired output pin from the drop-down list and then click the **Force Output** button.

For this, the subscriber must grant the privilege to Center V2 first. See the **Allow Center V2 to Force Output** option in Figure 9-16.

I/O Enable Setting

The Center V2 operator can manually arm or disarm any I/O devices of subscribers without interrupting the monitoring. For this, the subscriber must give the privilege first. See the **Allow Center V2 to Enable/Disable I/O** option in Figure 9-16.

To arm or disarm I/O devices

1. On the Subscriber List (No. 4, Figure 9-1), right-click one online subscriber and select **I/O Enable Setting**.
2. Check the Input/Output to arm or uncheck the Input/Output to disarm the device(s).

Camera/Audio Control

This feature allows two-way audio communication between CenterV2 and the subscriber, as well as PTZ control.

On the Subscriber List (No. 4, Figure 9-1), right-click one online subscriber and then select **Camera/Audio Control** to display this window. Click the **Play** button to start the application.



Figure 9-24

The controls on the Camera/Audio Control:

No.	Name	Description
1	Close	Closes the Control window.
2	Play	Plays live video.
3	Stop	Stops playing video.
4	Microphone	Enables speaking to the subscriber. The subscriber must grant the privilege first. See the Allow Audio-Out to Center V2 option in Figure 9-15.
5	Speaker	Enables live audio from the subscriber. The subscriber must grant the privilege first. See the Accept Audio-In from Center V2 option in Figure 9-15.
6	Change Camera	Switches camera channels.
7	PTZ Control Panel	Controls PTZ camera remotely.

Camera Monitor

Use the Camera Monitor window to define the following:

- Enable and disable live display
(The subscriber must give the privilege first. See the **Allow Center V2 to View Live Camera** option in Figure 9-14)
 - Define the interval between incoming events triggered by motion detection and video lost
1. On the Subscriber List (No. 4 in Figure 9-1), right-click one online subscriber and select **Camera Monitor**.
 2. The Camera Monitor window appears.

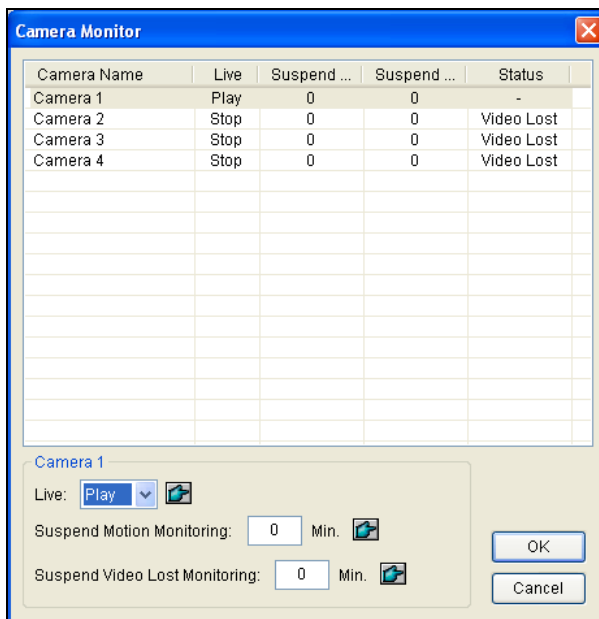




Figure 9-25

- **Live drop-down list:** Highlight one camera, and select **Play** (enable live display) or **Stop** (disable live video).
 - **Suspended Motion Monitoring:** Highlight one camera, and set the interval between incoming events triggered by motion detection. Alternatively, you can right-click one live camera channel on the monitoring window and select **Suspend** for the same setting.
 - **Suspend Video Lost Monitoring:** Highlight one camera, and set the interval between incoming events triggered by video lost.
 - **Status column:** Displays the status of video lost from cameras or disconnection.
3. Click **OK** to apply the settings.

If the camera is enabled for live display, you will see  in the upper right corner of its monitoring window; otherwise, you will see .

Viewing Subscriber Information

To view the general information about your subscribers, click the **Host Information** button (No. 9, Figure 9-1) on the Center V2 window to display the Host Information window. Choose a subscriber from the list, and click the **View Information...** button to view its related information.

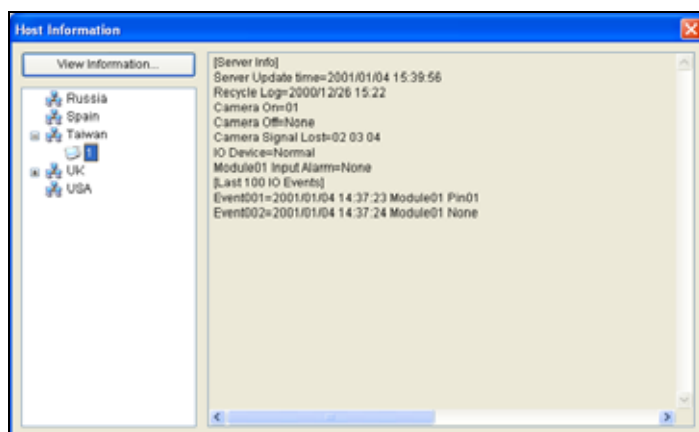


Figure 9-26

Subscription Control

The Center V2 operator can disable its services to an individual subscriber when subscription expires. On the Address Book (Figure 9-2), right-click one subscriber and select **Disable**. To restore the subscription, right-click again to select **Enable**.

Output Alerts

When alert conditions occur, you can activate the output devices installed either at the Center V2 site or at the subscriber site.

Forcing Outputs of Center V2

To configure output devices at the Center V2 site, click the **I/O Device** button (No. 7, Figure 9-1) on the Center V2 window and then select **I/O Device** from the menu. Currently the application only supports GV-IO modules. For setup details, see *Setting Up I/O Devices*, Chapter 2 on the Surveillance System Software CD.

To automatically force outputs when alert conditions occur, see *Notification Settings* later in this chapter.

To manually force outputs, click the **I/O Device** button (No. 7, Figure 9-1) on the Center V2 window, and then select **Force Output** to display the Force Output of Local I/O Device window. Select a desired module and then click **Finger** buttons to activate outputs.

Forcing Outputs of a Subscriber

See *Showing I/O Status* earlier in this chapter.

Notification Settings

Center V2 can automatically activate the assigned computer and output alarm to notify the operator while a SMS and e-mail message being sent out to subscribers, when alert conditions occur. For this application, click the **Preference Settings** button (No. 10, Figure 9-1) on the Center V2 window and select **Notification** to display this window.

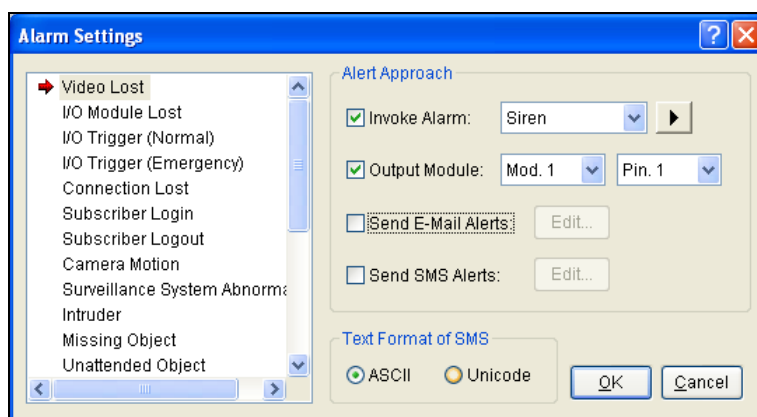


Figure 9-27

[List box] Select an alert condition for configuration. The alert conditions include: (1) Video Lost, (2) I/O Module Lost, (3) I/O Trigger (Normal), (4) Trigger (Emergency), (5) Connection Lost, (6) Subscriber Login, (7) Subscriber Logout, (8) Camera Motion, (9) Surveillance System Abnormality, (10) Intruder, (11) Missing Object, (12) Unattended Object, (13) Scene Change, (14) POS Loss Prevention, (15) Disk Full, (16) Stop all camera monitoring, (17) Stop I/O Monitoring, (18) Start Monitoring All Type Events, (19) Stop Monitoring All Type Events, (20) Wait-Time Expired and (21) Unexpected Logout.

[Alert Approach]

- **Invoke Alarm:** Select a computer alarm from the drop-down list. Or, select **User Define** from the list to import one desired .wav sound. Click the **Arrow** button beside to test the assigned alarm.
- **Output Module:** Select an installed output model and pin number to alert the Center V2 operator.
- **Send E-Mail Alerts:** Enables e-mail alerts to send e-mails to subscribers. Click the **Edit** button to edit a message. For E-Mail settings, see *E-Mail Alerts later* in this chapter.
- **Send SMS Alerts:** Enables SMS alerts to send SMS messages to subscribers. Click the **Edit** button to edit a message. For SMS Server settings, see *SMS Alerts later* in this chapter.

[Text Format of SMS] ASCII for English text, limited to 160 characters. Unicode for other languages, limited to 70 characters.

Note: For E-mail and SMS alerts, ensure to set up e-mail addresses and mobile numbers for each subscriber in the Subscriber Address Book (Figure 9-3).

SMS Alerts

You can send SMS messages to subscribers when alert conditions occur.

Setting SMS Server

Before sending SMS messages to an individual subscriber, you need to define SMS Server correctly.

1. On the Center V2 window, click the **SMS** button (No. 6, Figure 9-1) and then select **SMS Setup** to display this dialog box.

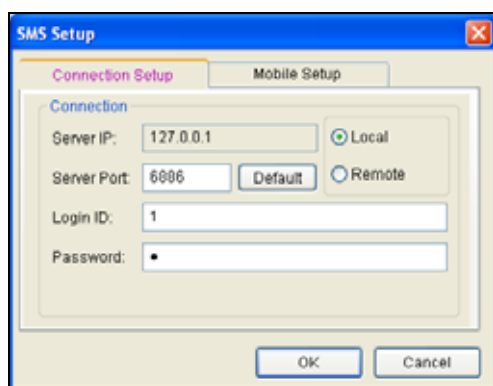


Figure 9-28

2. Type the IP address, communication port, Login ID and Password of the SMS Server.
3. If the SMS Server is installed at the same computer with the Center V2, select **Local**. If not, select **Remote**.
4. To set up three mobile numbers of Center V2 operators to get notified when Center V2 loses connection to SMS Server, click the **Mobile Setup** tab to display this window.

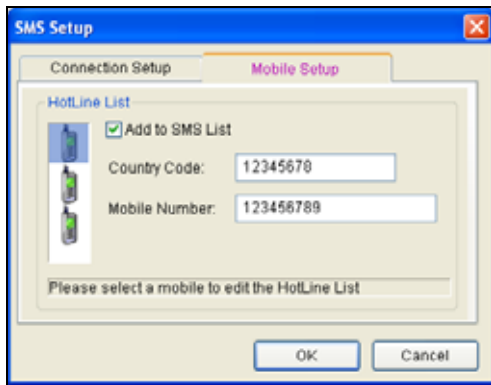


Figure 9-29

5. Select one mobile icon, check **Add to SMS List**, and type country code and mobile number.

For details on SMS Server, see Chapter 10 “Short Message Service “on the Surveillance System Software CD.

Connecting to SMS Server

On the Center V2 window, click the **SMS** button (No. 6, Figure 9-1) and then select **Connect to SMS Server** for connection.

Sending SMS

Once the connection of SMS Server and Center V2 is established, there are several ways to send SMS messages to subscribers. See the Center V2 window for the following selections.

1. Click the **SMS** button (No. 6, Figure 9-1) and select **Send Short Message**. This sends SMS to an individual subscriber manually.
2. On the Subscriber List (No. 4, Figure 9-1), right-click one subscriber and select **Send Short Message**. This sends SMS to an individual subscriber manually.
3. On the Event List, double-click one Event Type, except Attachment, to call up a message window. Click the **Send Short Message** icon on the window. This sends SMS to an individual subscriber manually.
4. Right-click one display channel and select **Send Short Message**. This sends SMS to an individual subscriber manually.
5. Click the **Preference Settings** button (No. 10, Figure 9-1), and select **Notification** to display the Alarm Settings window. Check the **Send SMS Alerts** item. This sends SMS to subscribers automatically when set alert conditions occur. For details, see *Notification Settings* earlier in this chapter.

E-Mail Alerts

You can send e-mails to subscribers when alert conditions occur.

Setting Mailbox

Before you can send e-mails to a separate e-mail account, you need to define your mailbox correctly.

To setup the mailbox

1. On the Center V2 window, click the **Preference Settings** button (No. 10, Figure 9-1), and then select **E-Mail Setup**. This dialog box appears.

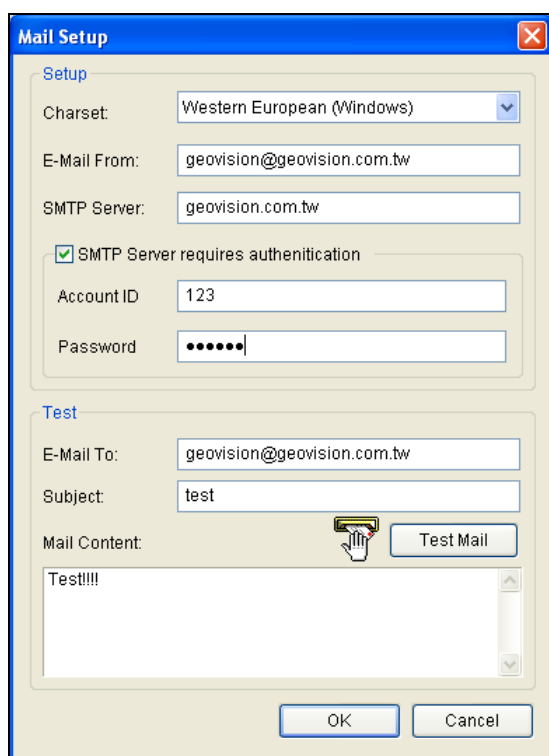


Figure 9-30

2. In the Charset field, select the set of characters and symbols that the e-mail uses.
3. In the E-Mail From field, enter your e-mail address.
4. In the SMTP Server field, enter the outgoing server address.
5. If your e-mail service provider requires authentication for sending e-mails, check **SMTP Server requires authentication**, and define the account ID and password of your SMTP.
6. Click **OK**.

To send a test e-mail

After setting up your mailbox, you can use the Test section and send a message to your own e-mail account for testing.

1. Enter your own e-mail address in the E-Mail To field.
2. Enter a subject for the e-mail
3. Type the desired message in the Mail Content field.
4. Click the **Test Mail** button.

Sending E-Mail

There are several ways to send e-mail alerts. See the Center V2 window for the following selections.

1. On the Subscriber List (No. 4, Figure 9-1), right-click one subscriber, and then select **Send E-Mail**. This sends the e-mail to an individual subscriber manually.
2. Right-click one display channel, and then select **Send E-Mail**. This sends the e-mail to an individual subscriber manually.
3. On the Event List, double-click one Event Type, except Attachment, to call up a message window. Click the **Send E-Mail** icon on the window. This sends the e-mail to an individual subscriber manually.
4. Click the **Preference Settings** button (No. 10, Figure 9-1), and select **Notification** to display the Alarm Settings window. Check the **Send E-Mail** item. This sends e-mails to subscribers automatically when set alert conditions occur. See *Notification Settings* earlier in this chapter.

E-Map Alerts

You can configure an instant E-Map alert to lay out the locations of triggered cameras, sensors and alarms within a floor plan.

For this application, subscribers must already create their own E-Maps using the E-Map Editor and activate **WebCam Server**.

To configure E-Map alert at the Center V2, right-click one online subscriber on the Subscriber List (No. 4, Figure 9-1) and select **E-Map**.

For details on E-Map, see *E-Map Application*, Chapter 7 on the Surveillance System Software CD.