



CCTV Camera Pros

**Remote Internet Viewing Setup Instructions for
the iDVR Surveillance Camera Recorder**

**Including Network Port Forwarding Setup
using a Linksys Router**

Surveillance DVR IP Address Setup

1. Use Direction buttons [] to select "NETWORK" menu. Then, press [ENTER] button to display "Network".



Use Down button [] to specify the detail.

Use [-, +] button to change the value.

2. Now Make sure your iDVR is set to DHCP

3. Save changes and exit the menu, press [ENTER] button.

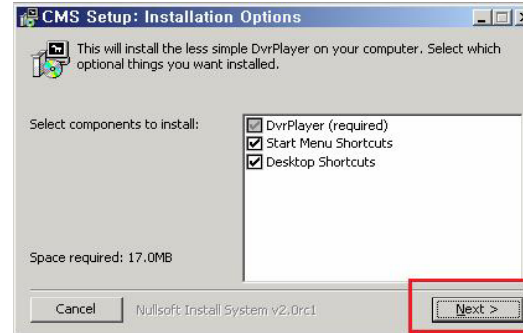


Install the iDVR CMS Software

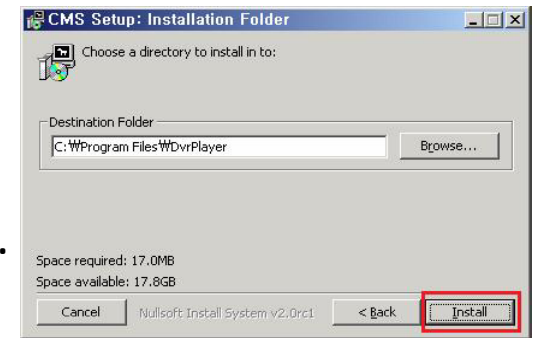
(1) Insert the “Client Install CD” into the CD-ROM of your PC and Find “CMSinstaller.exe” and double click it



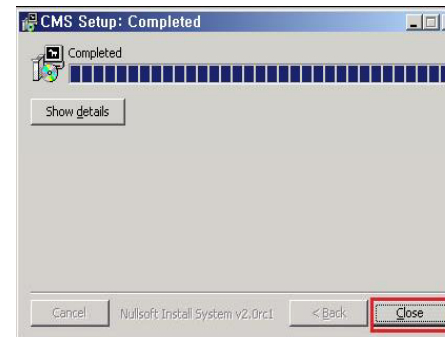
(2) Click 「NEXT」 button:



(3) Click 「Install」 . Otherwise, designate a directory for Install then Click “Install”.




(4) Click 「Close」 Button after below images appears.



(5) The ICON  of CMS which will be displayed on your desktop.

Set DVR List Manager

- Set List Manger is mainly used to add or delete DVR on CMS. Click this button  to start the Set List Manager.



1) Auto Scan

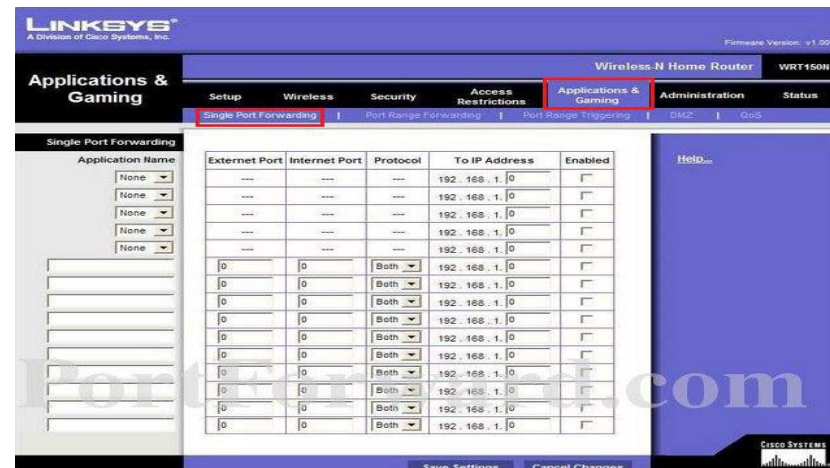
It automatically tracks down DVRs connected local network but skips over already on the list. The DVR Host Name is entered automatically to the title and default Password is 000000(USER).

2) Set Name: Type on DVR title to display on Monitoring window, Health window and DVR Window.

3) Add to List: Click “Add to List” to complete add the DVR onto CMS list.

LinkSys Router Configuration / Port Forwarding

1. Open a web browser like Internet Explorer or Firefox. Enter the **internal IP address** of your router in the address bar of your browser. By default the internal ip address is 192.168.1.1.
2. You should see a box prompting you for your password. Enter your password now. By default your user name and password is **admin**. Click the **Ok** button to log in to your router.
3. We will list a series of lines here that will show you exactly how to forward the ports you need to forward. The iDVR-E requires you to forward the following port: 7000. Go ahead and enter the settings shown Below into the **Single Port Forwarding** or **Port Range Forwarding** menu.



4. Fill in the blanks with the following

Application Name :iDVR

External Port:7000

Internal Port :7000

Protocol: Both

To IP Address : IP Address of your iDVR

Enabled: Check Box

Application Name	External Port	Internet Port	Protocol	To IP Address	Enabled
	---	---	---	192.168.1.0	<input type="checkbox"/>

5. When you're finished, click **Save Settings** near the bottom of the screen to save your changes.

Port Test

1. Go to <http://yougetsignal.com>
2. Now click the Port Forwarding Test link
3. Type in 7000 for Port Number and press the Check button.
4. If successful it will read port open.
5. If it reads closed and you have DSL for your internet service you will need to call your provider and have them bridge the modem to your Linksys router. This is a standard process.
6. If the port is open, the Remote IP Address shown is the IP Address you will use for Remote Viewing and Mobile Viewing.

Port Forwarding Tester

your external address

67.102.120.42

open port finder

Remote Address Port Number
[Use Current IP](#)

Check a port's status by entering an address and port number above.

Mobile Viewing

1. Open your mobile web browser and type in <http://idrvviewer.com>

2. Type in the following credentials

Address : The IP Address you got from yougetsignal.com

Port: 7000

User Name: admin (Case sensitive)

Password: 000000 (Unless Changed)

ADDRESS	74.96.882.99
PORT	7000
USER NAME	admin
PASSWORD	000000
<input type="button" value="GO"/>	

3. Select the camera you would like to view

CAMERAS
CAM1
CAM5
HOME

CAM2
CAM6

CAM3
CAM7

CAM4
CAM8

4. Once you have selected the video channel you should see the live video



5. To select another camera press the back Option

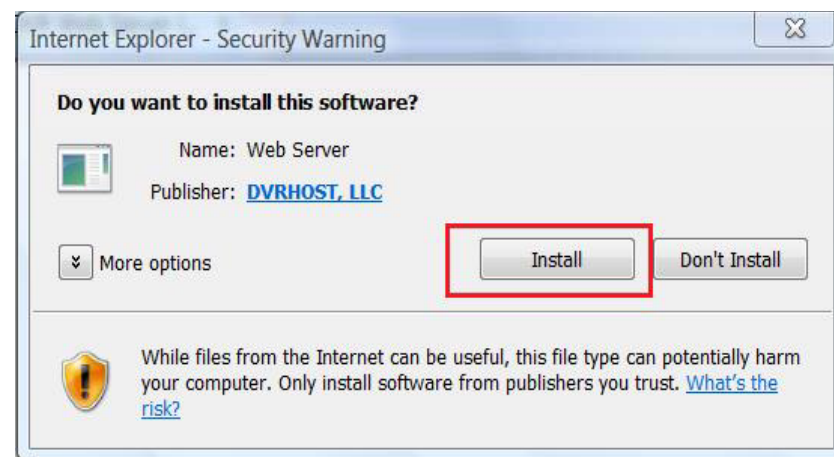
6. To logout press the Home option

Remote Security Camera Viewing Via IE (Internet Explorer)

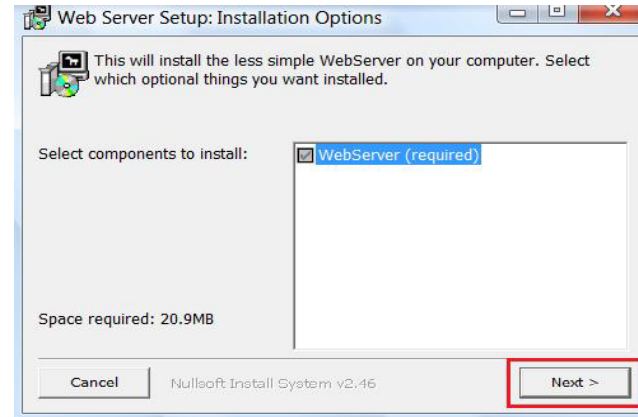
1. On your Windows PC Open the IE web Browser
2. In the browser type in your ip address as follows <http://your-ip-adres:7000> so if your ip address is 72.148.93.683 then it should read <http://72.148.93.683:7000>
3. Type in your user name: admin and password: 000000
4. Once you log in click th [Web Server](#) link
5. Now you will see a prompt at the top of the screen click and install the active x control.



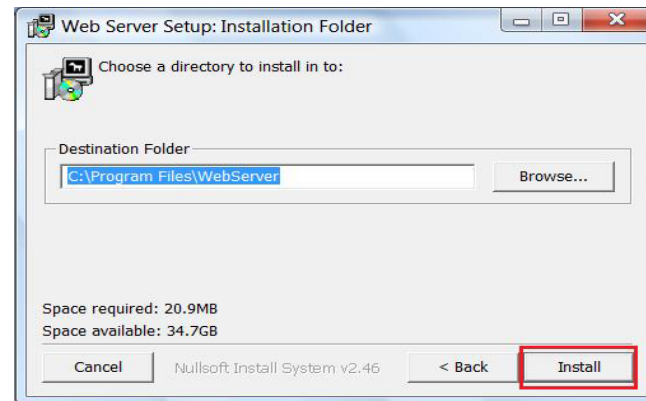
6. You will see another prompt press install.



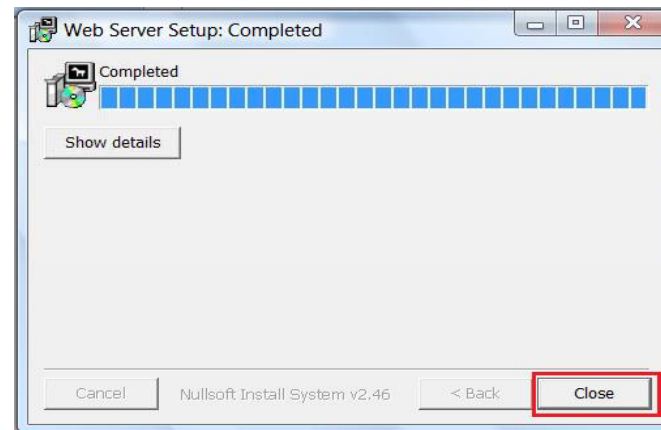
**7. For the Web Server Setup Installation options
Leave as shown and press the next button**



**8. Select the destination where you would like the file
to be downloaded and press the install button**



9. Once the install is complete press the close button



10. You should now see your cameras