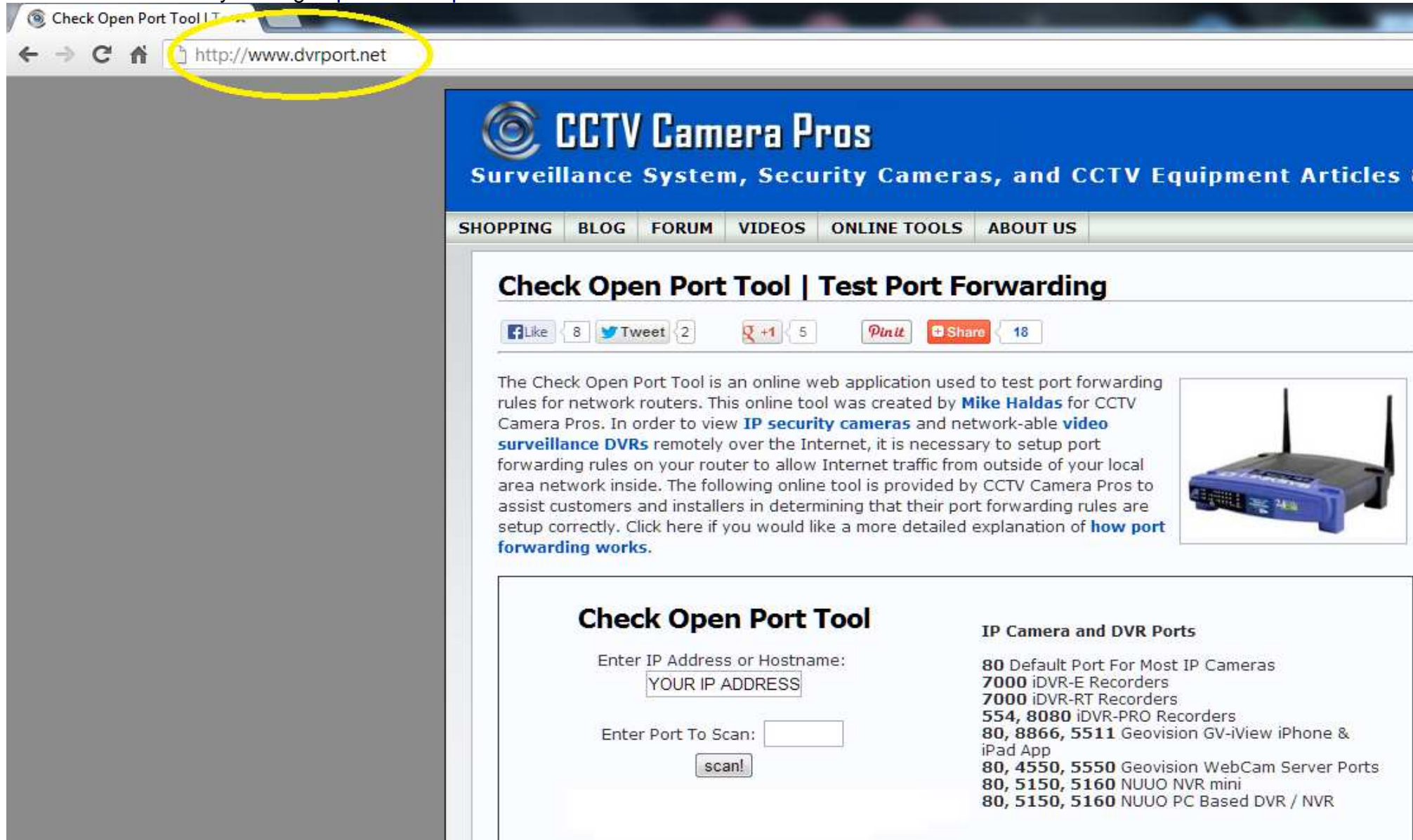


iDVR-E series DDNS setup



Step 1

The first requirement for remote access is confirming that the correct port is “open” on your access point or router. This can be confirmed by visiting <http://www.dvrport.net> as seen below.




CCTV Camera Pros
Surveillance System, Security Cameras, and CCTV Equipment Articles

SHOPPING BLOG FORUM VIDEOS ONLINE TOOLS ABOUT US

Check Open Port Tool | Test Port Forwarding

Like 8 Tweet 2 +1 5 Pin It Share 18

The Check Open Port Tool is an online web application used to test port forwarding rules for network routers. This online tool was created by **Mike Haldas** for CCTV Camera Pros. In order to view **IP security cameras** and network-able **video surveillance DVRs** remotely over the Internet, it is necessary to setup port forwarding rules on your router to allow Internet traffic from outside of your local area network inside. The following online tool is provided by CCTV Camera Pros to assist customers and installers in determining that their port forwarding rules are setup correctly. Click here if you would like a more detailed explanation of **how port forwarding works**.



Check Open Port Tool

Enter IP Address or Hostname:

Enter Port To Scan:

IP Camera and DVR Ports

- 80 Default Port For Most IP Cameras
- 7000 iDVR-E Recorders
- 7000 iDVR-RT Recorders
- 554, 8080 iDVR-PRO Recorders
- 80, 8866, 5511 Geovision GV-iView iPhone & iPad App
- 80, 4550, 5550 Geovision WebCam Server Ports
- 80, 5150, 5160 NUUO NVR mini
- 80, 5150, 5160 NUUO PC Based DVR / NVR

Step 2

A Your IP address will be populated in the **IP ADDRESS / HOST NAME** box

Enter IP Address or Hostname:

YOUR IP ADDRESS

On the right side, find your DVR and select the **port** number for the device, once selected the page will **automatically** scan for the status of the port.

IP Camera and DVR Ports

80 Default Port For Most IP Cameras

7000 iDVR-E Recorders

7000 iDVR-RT Recorders

554, 8080 iDVR-PRO Recorders

80, 8866, 5511 Geovision GV-iView iPhone & iPad App

80, 4550, 5550 Geovision WebCam Server Ports

80, 5150, 5160 NUUO NVR mini

80, 5150, 5160 NUUO PC Based DVR / NVR

If the port is “**OPEN**”, proceed to step 4.

PORT 7000 is **open** on YOUR IP ADDRESS

If the port is “**CLOSED**”, port forwarding settings will need to be adjusted in your router / modem.

Contact **CCTV Camera Pros** for further assistance.

PORT 7000 is **closed** on YOUR IP ADDRESS

Step 3



Starting from the main screen on your dvr,
select **“Menu”** on your remote



Steps 4-8 cover our legacy iDVR recorder, proceed to Step 9 if the menu below does not match your unit.

Once “**Menu**” is selected , you will be prompted for your password*

*The default password for the iDVR-E series is **000000**

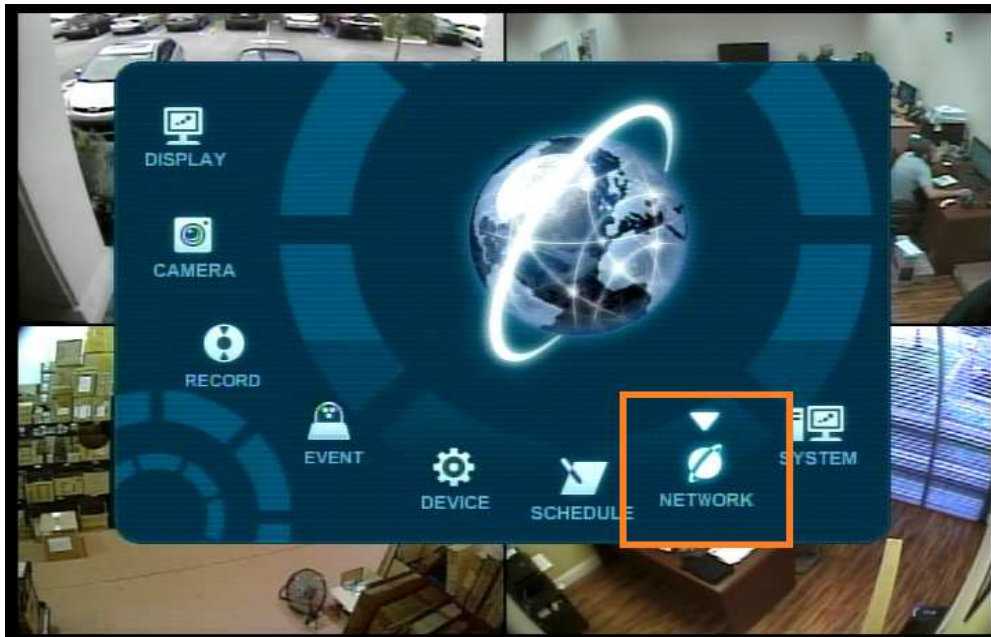


After logging in, you will see the main system menu (**shown below**)



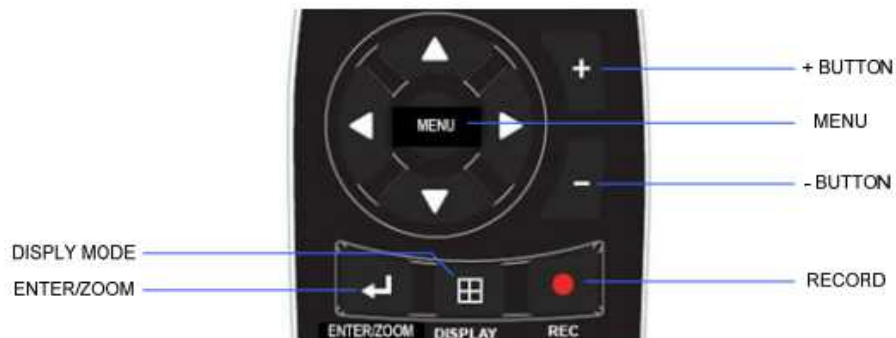
Step 5

From the main menu, navigate to the “**Network**” option using the arrow buttons on the remote



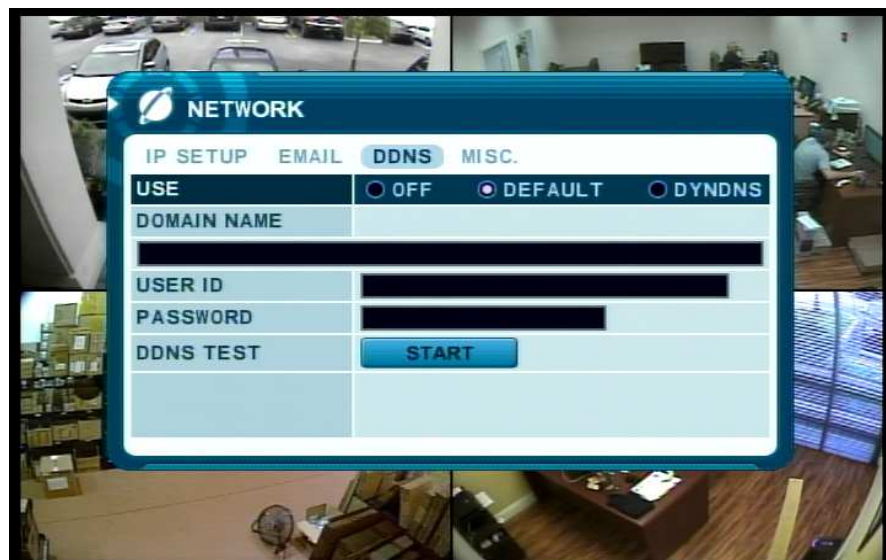
On the Network menu, use the arrow buttons and select “**DDNS**”

Select “**Network**” using the “**Enter**” button on the remote

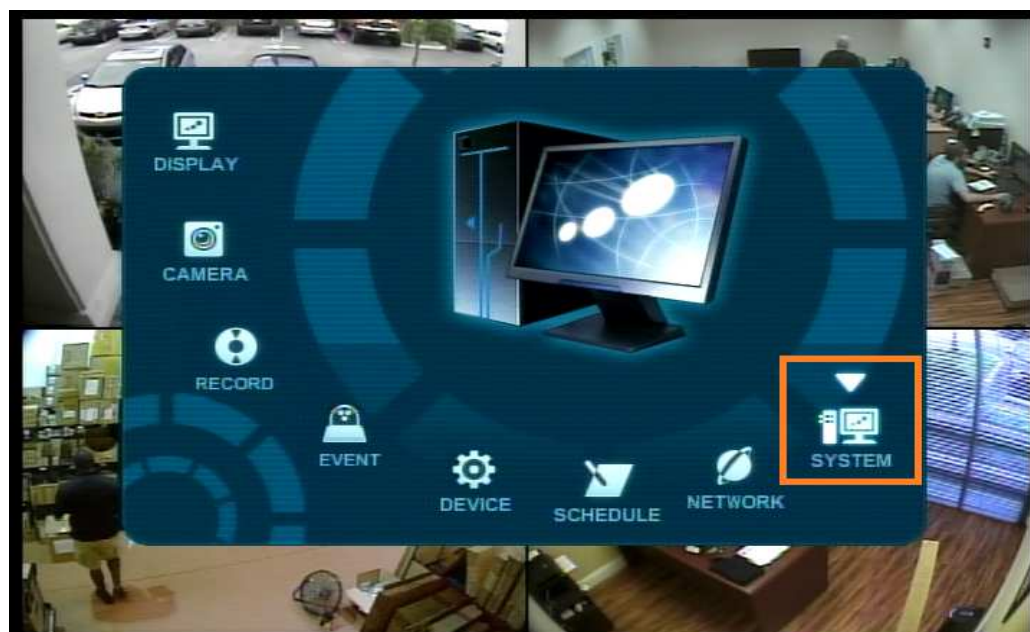


Step 6

Scroll down to the first line, using the + and – buttons, then select the “Default” option.

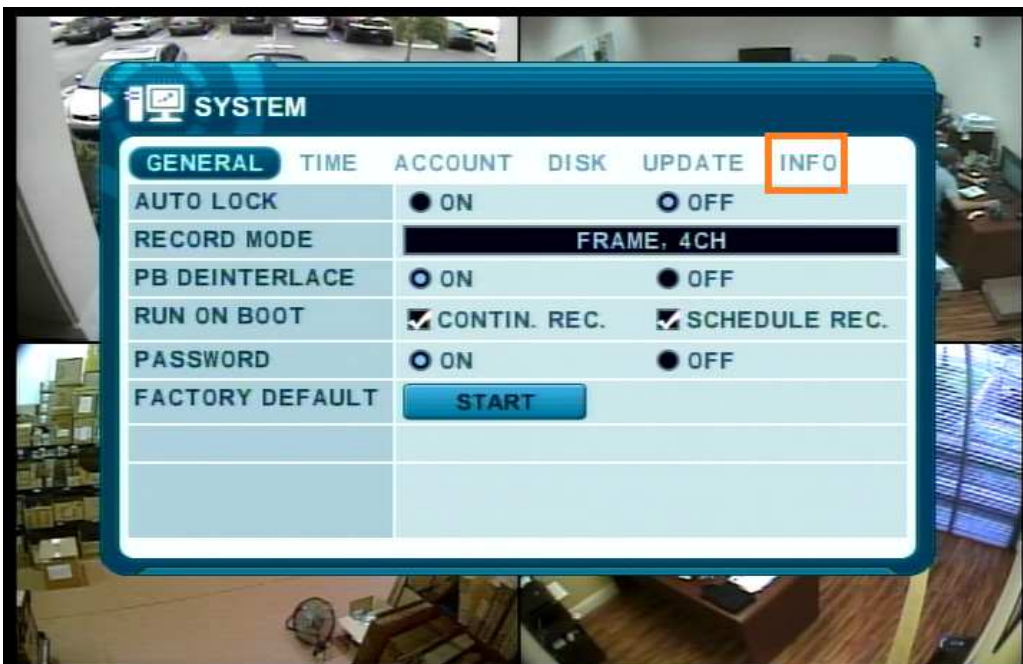


Once “Default” is chosen, press “Enter” on the remote to return to the main menu. Then using the arrows on the remote to highlight “System”, then “Enter” to select it.



Step 7

Using the arrows on the remote, select the “**INFO**” tab



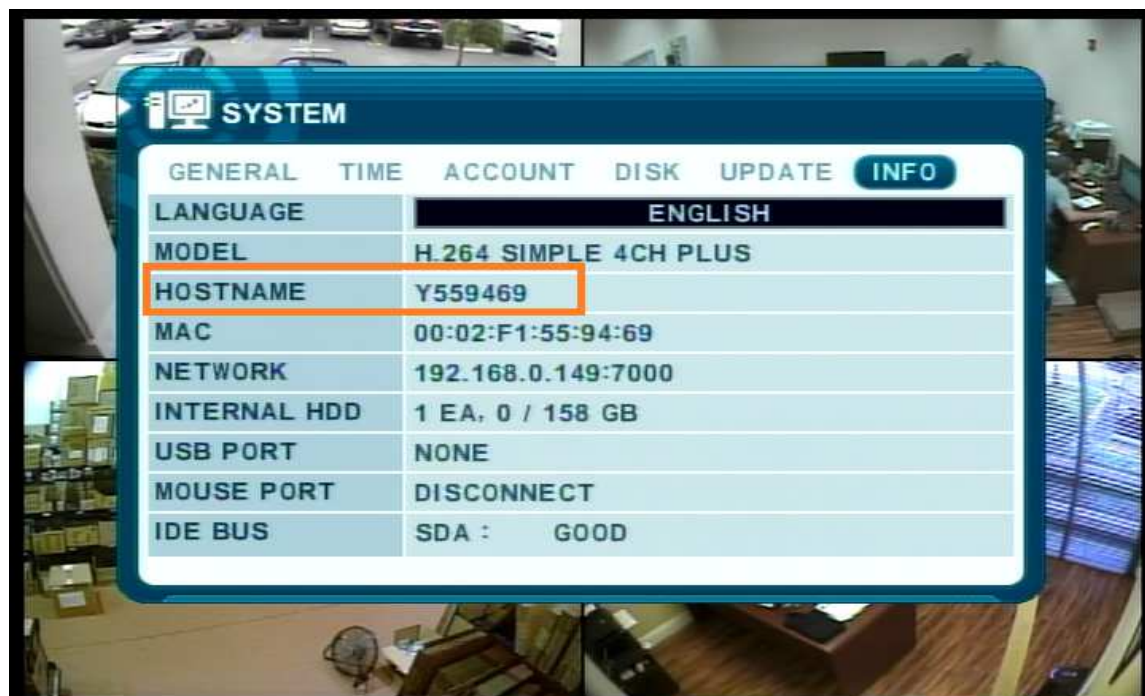
On the “**INFO**” tab, notice the line labeled **HOSTNAME**. Take note of the **HOSTNAME** as this is what will be used to connect remotely.

If your DVR's host name
is Y559469, Your DVR's remote address
address is **http://Y559469.dvrhost.com:7000**

***BE SURE TO SUBSTITUTE YOUR HOSTNAME FOR
THE ADDRESS USED IN THIS EXAMPLE***

The remote address will be used in place of “**Host/IP**”
in your mobile app and /or web browser.

Port 7000 is the **DEFAULT** port for the iDVR-E series,
if you have changed the port to **any other number**,
please use that instead



Step 8

Using the arrows on the remote, select the icon shown below



If your DVR's host name

is **G57FB43**, Your DVR's remote address

address is **<http://G57FB43.dvrhost.com:7000>**

BE SURE TO SUBSTITUTE YOUR HOSTNAME FOR THE ADDRESS USED IN THIS EXAMPLE

The remote address will be used in place of “**Host/IP**” in your mobile app and /or web browser.

Port 7000 is the **DEFAULT** port for the iDVR-E series, if you have changed the port to **any other number**, please use that instead

On the “**INFO**” tab, notice the line labeled **HOSTNAME**. Take note of the **HOSTNAME** as this is what will be used to connect remotely.





copyright © 2013

CCTV

Camera Pros

Call us at (561) 433-8488

Toll Free
1-888-849-2288



Questions?

Open Monday-Friday, 9AM-5:30PM

or email us Support@cctvcamerapros.net