



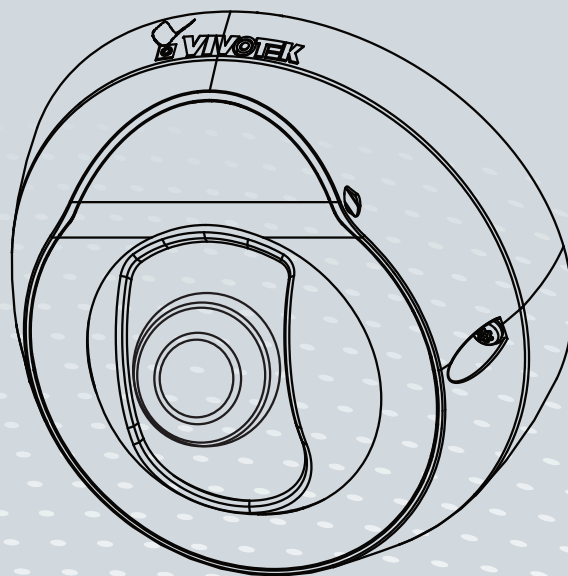
FD8151V Fixed Dome
Network Camera

Quick Installation Guide

English | 繁體 | 簡中 | 日本語 | Français | Español | Deutsch | Português | Italiano | Türkçe | Polski | Русский | Český | Svenska

Nederlands | Dansk | Indonesia | العربية

1.3MP • Vandal-Proof • Day & Night





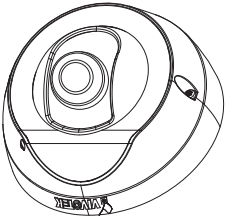
Warning Before Installation

- Power off the Network Camera as soon as smoke or unusual odors are detected.
- Do not place the Network Camera on unsteady surfaces.
- Do not insert sharp or tiny objects into the Network Camera.
- Keep the Network Camera away from water. If the Network Camera becomes wet, power off immediately.
- Do not touch the Network Camera during a lightning storm.
- Do not place the Network Camera in high humidity environments.

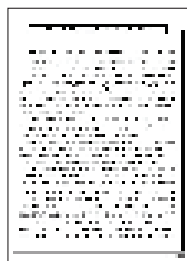


Package Contents

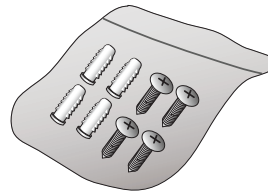
● FD8151V



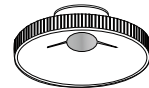
● Quick Installation Guide / Warranty Card



● Screws



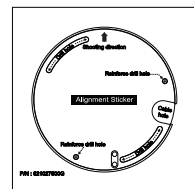
● Focus Adjustment Tool



● Software CD



● Alignment Sticker



● Anti-tamper Screwdriver



NOTE:

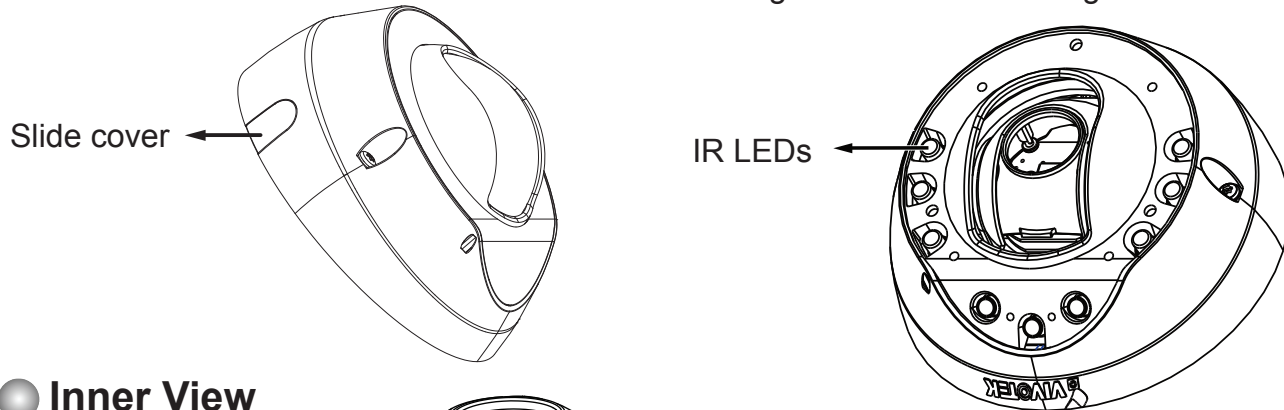
All cables are user-supplied. Use a CAT5 standard UTP or better quality cable. In order to pass the Ethernet cable through the routing path, the maximum cable diameter allowed is 5.2mm.

2

Physical Description

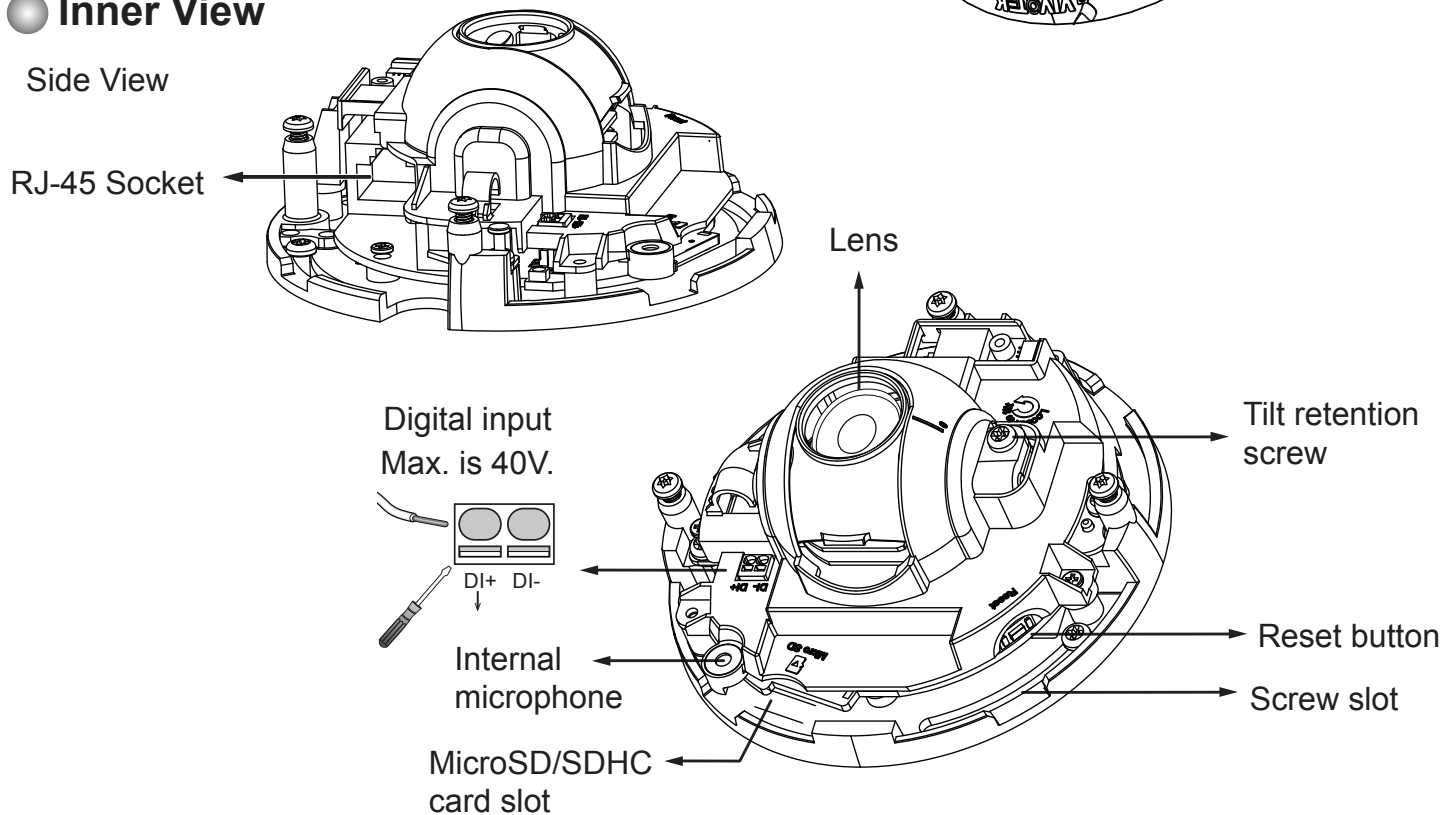
Outer View

Leave the slide cover in place if you route cables through the bottom and then through a hole on the ceiling or wall.



Inner View

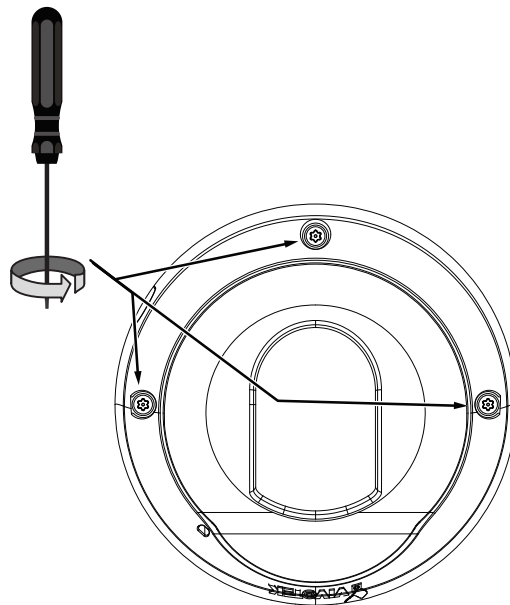
Side View



3 Hardware Installation

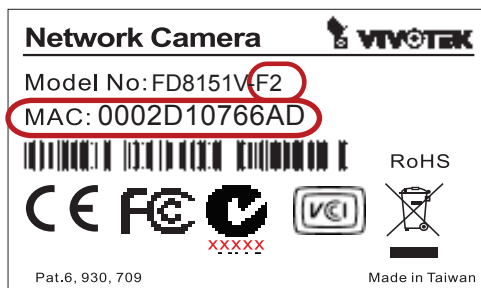
● Removing the Dome Cover

1. Unscrew the anti-tamper screws using the included screwdriver.
2. Remove the dome cover.
3. Remove the slide cover if you want to route cables from the side of camera instead of a hole on the ceiling or wall.



! IMPORTANT:

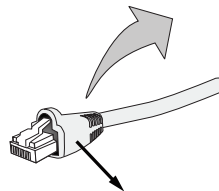
1. Record the MAC address before installing the camera.



2. You can check the model name suffix for the type of lens mounted on your camera. The applicable lens can be:
F2: 2.4mm; F4: 4mm; F8: 8mm. The shorter the focal length, the wider the view.

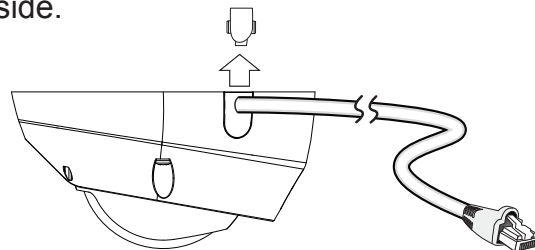
✎ NOTE:

1. It is recommended to use an Ethernet cable that comes without the strain relief boot. You can remove the boot if your cable comes with one.



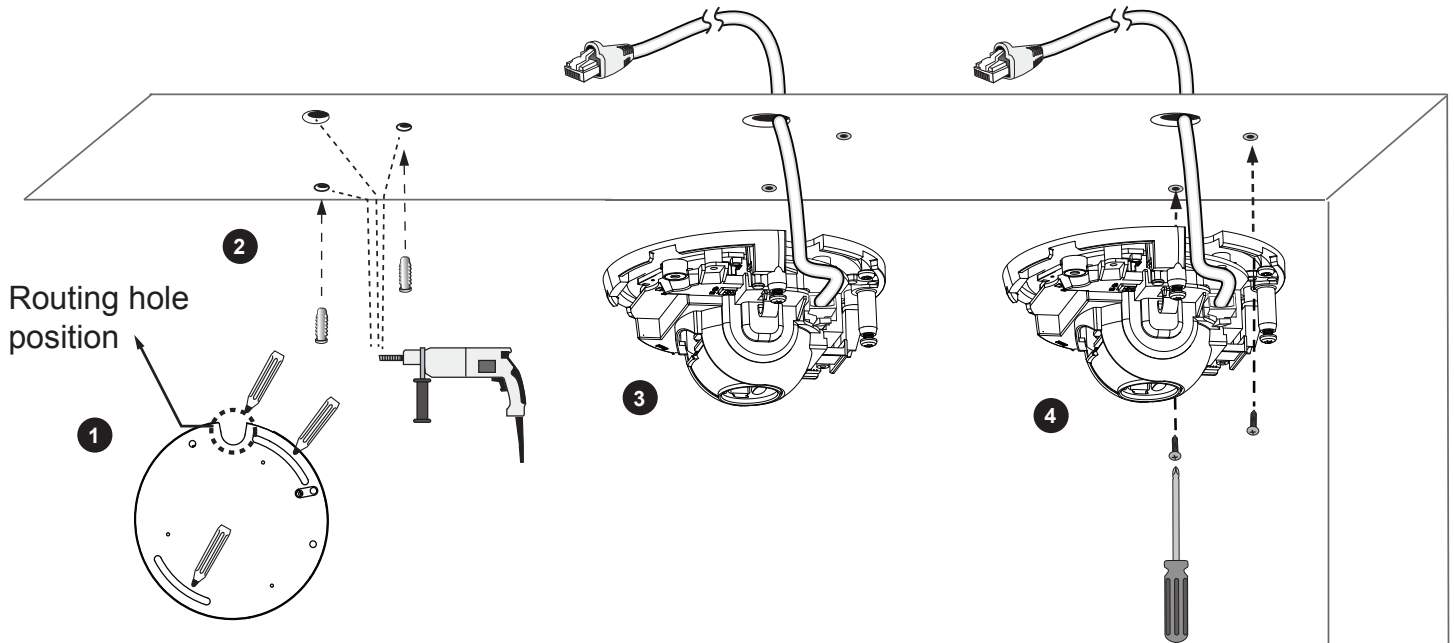
Strain relief boot

2. As shown below, you may also route cable from the side.

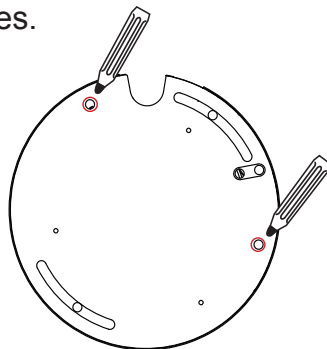


● Mounting the Network Camera - Ceiling or Wall Mount

1. Use the alignment sticker as a template to mark where holes will be drilled on the ceiling. Drill two holes into the ceiling; and hammer in the plastic anchors.
2. Drill another hole if you want to route cables through the ceiling or wall.
3. Connect and route an Ethernet cable through the ceiling or wall.
4. Temporarily attach the Network Camera to the ceiling using two included screws.



5. After tuning the camera's shooting direction and tilt angle, you can remove the camera and drill another 2 holes to the ceiling for better support. For vandal-proof applications, you can secure the camera using all 4 mounting holes.



NOTE:

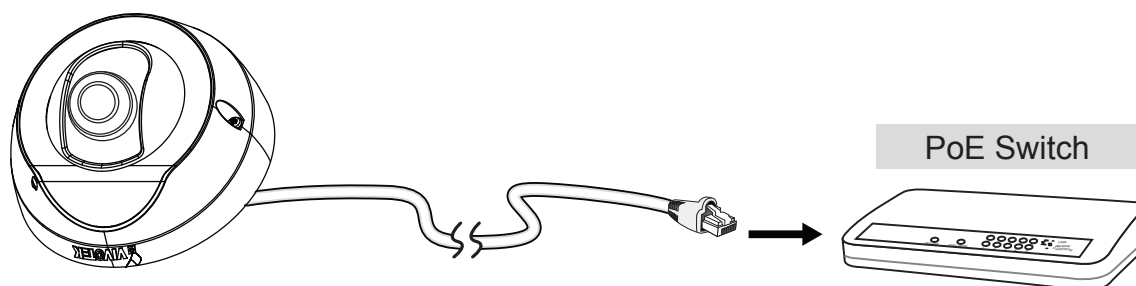
1. Do not completely tighten the mounting screws in the screw slots yet. You may need to turn the camera left or right for a best shooting direction later.
2. The camera can only be powered by PoE. There is no DC or AC input connector.

4 Network Deployment

Power over Ethernet (PoE)

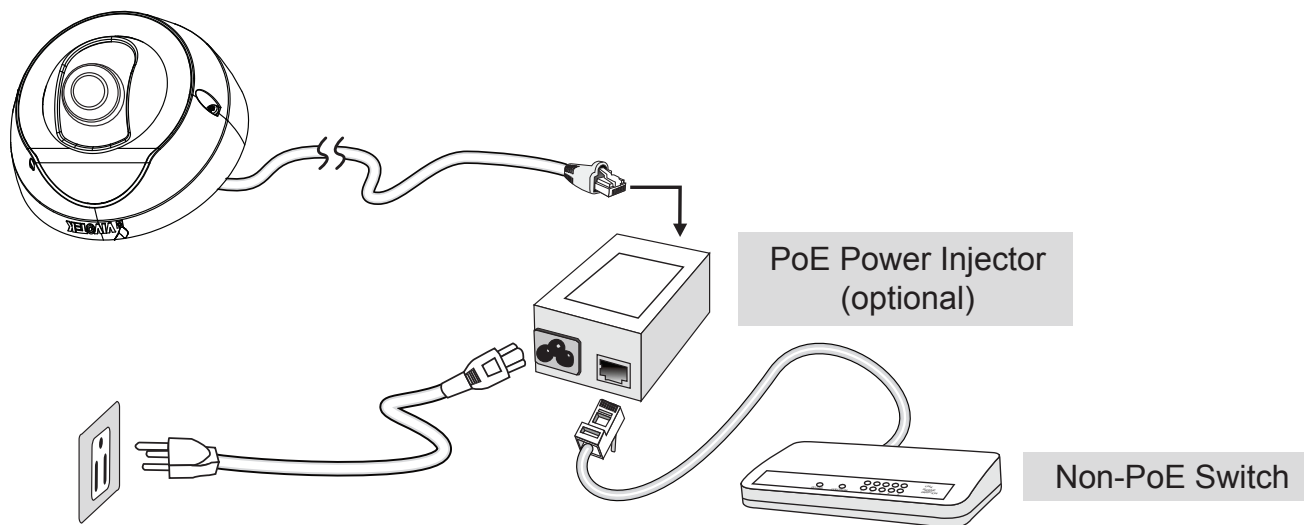
● When using a PoE-enabled switch

This Network Camera is PoE-compliant, allowing transmission of power and data via a single Ethernet cable. Follow the below illustration to connect the camera to a PoE-enabled switch via Ethernet cable.



● When using a non-PoE switch

Use a PoE power injector (optional) to connect between the Network Camera and a non-PoE switch.



5

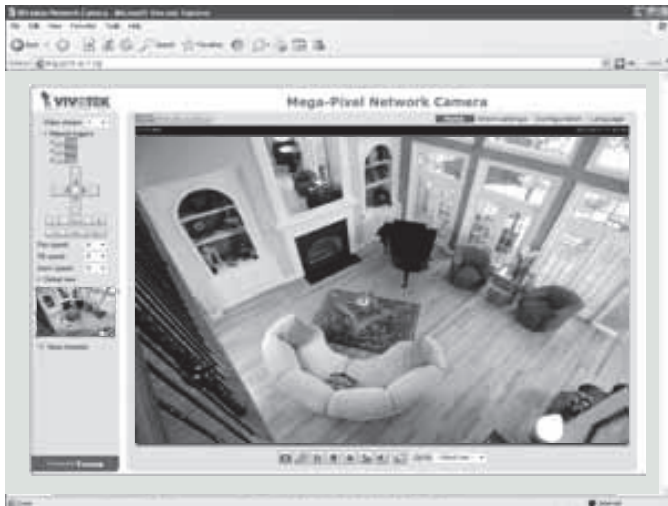
Assigning an IP Address

1. Install "Installation Wizard 2" from the Software Utility directory on the software CD.
2. The program will conduct an analysis of your network environment. After your network is analyzed, please click on the "Next" button to continue the program.
3. The program will search for VIVOTEK Video Receivers, Video Servers, and Network Cameras on the same LAN.
4. After a brief search, the main installer window will pop up. Double-click on the MAC address that matches the one printed on the camera label or the S/N number on the package box label to open a browser management session with the Network Camera.

6

Ready to Use

1. A browser session with the Network Camera should prompt as shown below.
2. You should be able to see live video from your camera. You may also install the 32-channel recording software from the software CD in a deployment consisting of multiple cameras. For its installation details, please refer to its related documents.



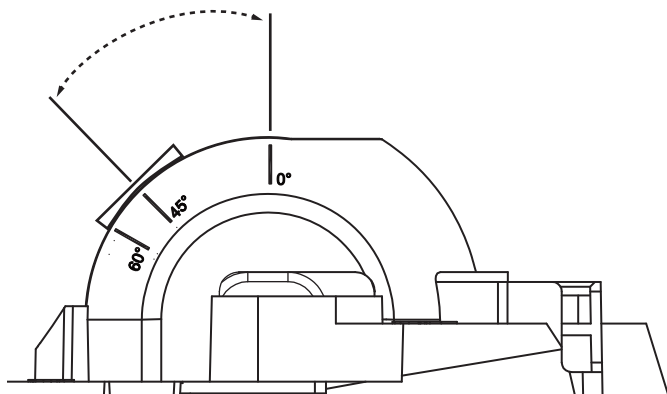
For further setup, please refer to the user's manual on the software CD.

7 Adjusting the Lens

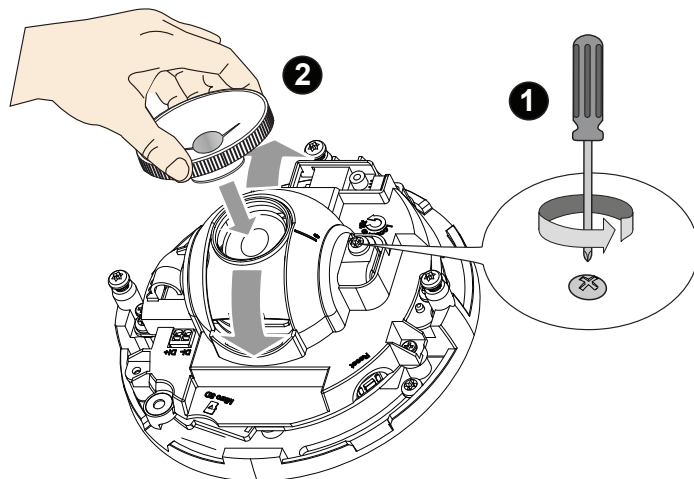
IMPORTANT:

For the F2 lens: the max. tilt angle is 45°.

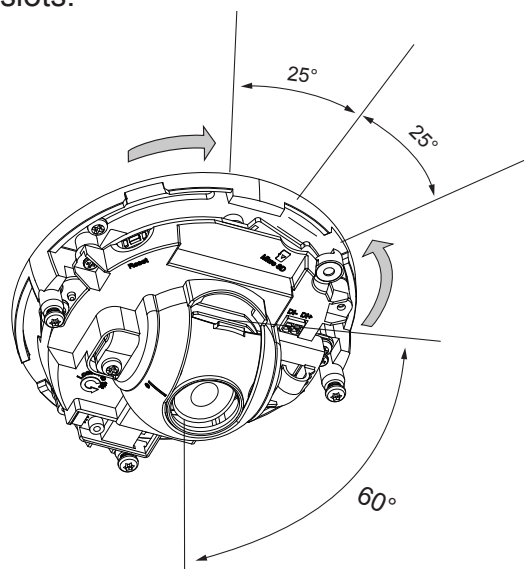
For other lens: the max. tilt angle is 60°.



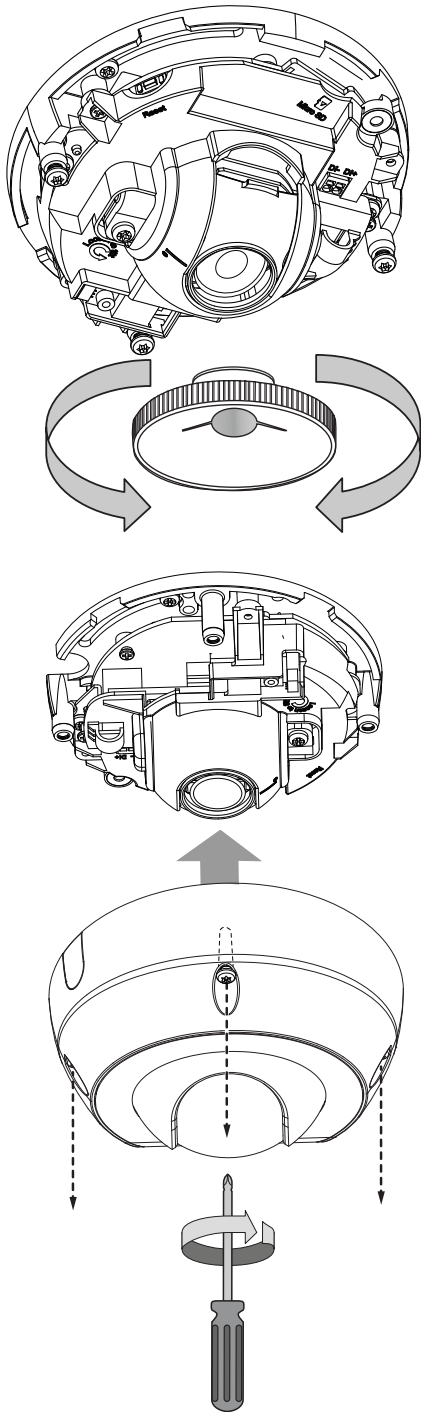
1. There is a tilt retention screw near the lens module. Use a #0, #1, or #2 Phillips screwdriver to loosen the screw. Use the lens adjustment tool to carefully change the tilt angle.



2. You may also tune the camera's horizontal orientation by turning it along its curved screw slots.



3. Tighten the tilt retention screw and the camera's mounting screws after you change the horizontal shooting direction. If you have concerns for vandalism, remove the camera and drill 2 more mounting holes for better support as previously mentioned.



4. With a live video feed, you can place the included focus adjustment tool carefully on the lens, and use it to turn the lens clockwise or counter-clockwise to adjust to the best image focus.

You may try tuning the focus slightly closer due to the concern that focus might be changed when the dome cover is installed.

5. Use a piece of clean cotton cloth to hold and install the dome cover.
6. Install dome cover by fastening the 3 anti-tamper screws.

P/N:625020300G Rev. 1.0

All specifications are subject to change without notice.
Copyright © 2012 VIVOTEK INC. All rights reserved.

VIVOTEK INC.

6F, No.192, Lien-Cheng Rd., Chung-Ho, New Taipei City, 235, Taiwan, R.O.C.
|T: +886-2-82455282 |F: +886-2-82455532 |E: sales@vivotek.com

VIVOTEK USA, INC.

2050 Ringwood Avenue, San Jose, CA 95131
|T: 408-773-8686 |F: 408-773-8298 |E: salesusa@vivotek.com