

FD8168

Ultra-mini Fixed Dome Network Camera



2MP · Full HD · Ultra-Mini Size · Easy Installation

VIVOTEK FD8168 is an ultra-mini fixed dome network camera, specially designed for indoor applications in which camera appearance is cared, such as luxury stores, antique stores and cloth shops.

The FD8168 is equipped with a 2-megapixel sensor and the ability to output 15 frames per second in H.264 compression. It includes multiple streams with different settings and applications, such as recording or live viewing.

Users can also benefit from simple installation with the compact housing and standard PoE power input design, as well as a MicroSD card slot for local storage use.

Key Features

- 2-Megapixel CMOS Sensor
- 15 fps @ 1920x1080; 30 fps @ 1280x720
- Real-time H.264, MJPEG Compression (Dual Codec)
- Built-in IEEE 802.3af Compliant PoE
- Built-in MicroSD/SDHC/SDXC Card Slot for On-board Storage
- Ultra-mini Size Design
- Easy Installation

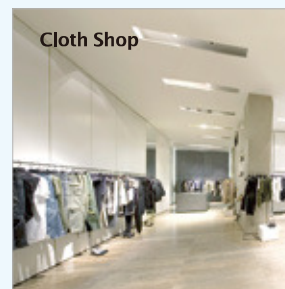
Ultra-mini Size



Convenience Store



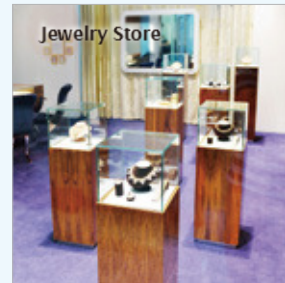
Cloth Shop



Fast Food Restaurant



Jewelry Store

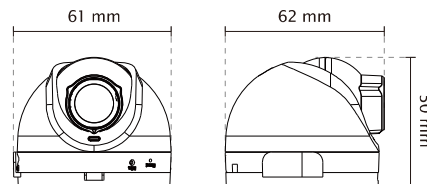


Technical Specifications

Model	FD8168
System Information	
CPU	Multimedia SoC (System-on-Chip)
Flash	16MB
RAM	256MB
Camera Features	
Image Sensor	1/2.7" Progressive CMOS
Maximum Resolution	1920x1080
Lens Type	Fixed-focal
Focal Length	f = 3.6 mm
Aperture	F 1.8
Field of View	97° (horizontal) 52° (vertical) 113° (diagonal)
Shutter Time	1/5 sec. to 1/32,000 sec
Minimum Illumination	0.58 Lux @ F1.8
Tilt Range	90°
On-board Storage	MicroSD/SDHC/SDXC card slot
Video	
Compression	H.264 & MJPEG
Maximum Frame Rate	15 fps @ 1920x1080 30 fps @ 1280x720 In both compression
Maximum Streams	3 simultaneous streams
S/N Ratio	Above 53 dB
Video Streaming	Adjustable resolution, quality and bitrate Configurable video cropping for bandwidth saving
Image Settings	Adjustable image size, quality and bit rate Time stamp, text overlay, flip & mirror Configurable brightness, contrast, saturation, sharpness, white balance, exposure control, gain, backlight compensation, privacy masks Scheduled profile settings
Network	
Users	Live viewing for up to 10 clients
Protocols	IPv4, IPv6, TCP/IP, HTTP, HTTPS, UPnP, RTSP/RTP/RTCP, IGMP, SMTP, FTP, DHCP, NTP, DNS, DDNS, PPPoE, CoS, QoS, SNMP, 802.1X, UDP, ICMP
Interface	10Base-T/100 BaseTX Ethernet (RJ-45)
ONVIF	Supported, specification available at www.onvif.org

Intelligent Video	
Video Motion Detection	Triple-window video motion detection
Alarm and Event	
Alarm Triggers	Video motion detection, manual trigger, digital input, periodical trigger, system boot, recording notification, camera tampering detection
Alarm Events	Event notification using digital output, HTTP, SMTP, FTP and NAS server File upload via HTTP, SMTP, FTP and NAS server
General	
Connectors	RJ-45 for Network/PoE connection
LED Indicator	System power and status indicator
Power Input	IEEE 802.3af PoE Class 1
Power Consumption	Max. 2.3 W
Dimensions	Ø: 62 mm x 50 mm (with bracket) Ø: 62 mm x 45 mm (w/o bracket)
Weight	Net: 80 g
Safety Certifications	CE, LVD, FCC Class B, VCCI, C-Tick
Operating Temperature	Starting Temperature: -10°C ~ 40°C (14°F ~ 104°F) Working Temperature: -20°C ~ 40°C (-4°F ~ 104°F)
Warranty	24 months
System Requirements	
Operating System	Microsoft Windows 7/Vista/XP/2000
Web Browser	Mozilla Firefox 7~10 (streaming only) Internet Explorer 7.x ,8.x, 9.x, 10.x
Other Players	VLC: 1.1.11 or above QuickTime: 7 or above
Included Accessories	
Others	Quick installation guide, warranty card, alignment sticker, ceiling mount bracket, wall-mount bracket

Dimensions



Compatible Accessories

PoE Kits



POE-IJ-1748NDN
802.3af Compliant PoE Injector



AW-FED-0500
4-port Unmanaged PoE Switch

All specifications are subject to change without notice. Copyright © VIVOTEK INC. All rights reserved.

Distributed by:



VIVOTEK INC.
6F, No.192, Lien-Cheng Rd., Chung-Ho,

VIVOTEK USA
2050 Ringwood Avenue,

VIVOTEK Europe
Randstad 22-133, 1316BW Almere,

Ver 1.3

