



IB8382-F3/-EF3 IB8382-T/-ET

Bullet Network Camera



5MP · P-iris · 30M IR · Remote Focus · IP66 · IK10 · 3DNR · Smart IR · Cable Management · Extreme Weather · Smart Stream

VIVOTEK's IB8382 is a series of economic professional outdoor bullet network cameras in VIVOTEK's 5MP Lite series which offer up to 15 fps at 5-Megapixel or 30 fps at 1080p resolution at a competitive price. Equipped with a new high resolution image sensor, different from other 5MP cameras, the IB8382 series provides sharper image quality and finer detail at a cost-effective price. And with powerful 3D Noise Reduction technology and Smart Stream technology the IB8382 series can also optimize resolution for a desired object or area to maximize efficiency of bandwidth usage.

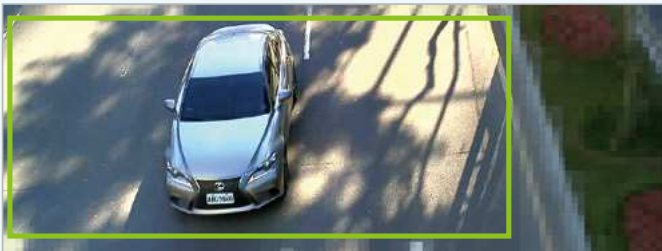
To create the perfect focus required to reap the benefits of higher resolutions, VIVOTEK's IB8382 series provides the options of both fixed focus, used for simple operation without electrical power, and remote focus with built-in stepping motors and P-iris for precise adjustment remotely.

To provide higher resolution in outdoor and harsh environments, VIVOTEK's IB8382 series is also armed with IP66-rated housing to help the camera body withstand rain, dust and high pressure water jets from any direction, while its IK10-rated housing provides protection against acts of vandalism or other impacts. Additionally, a wide operating temperature range further improves the IB8382-EF3 and IB8382-ET's performance and reliability in extremely cold or warm weather, even when using PoE.

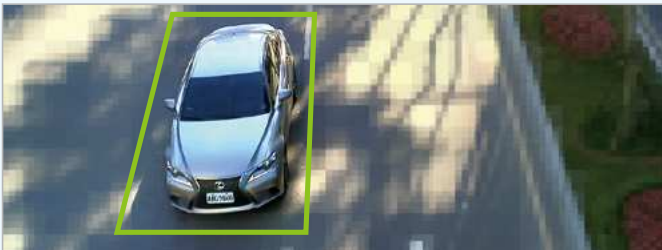
With the highly flexible VADP (VIVOTEK Application Development Platform), users can extend the features of this series by adding third-party applications for the IB8382-F3, IB8382-EF3, IB8382-T, and IB8382-ET. Thus the IB8382 series is not only equipped with multiple focusing methods and wide temperature range options, is but ideal for a wide variety of applications.

Key Features

- 5-Megapixel CMOS Sensor
- 15 fps @ 2560x1920, 30 fps @ 1920x1080
- 3 ~ 9 mm Vari-focal, Remote Focus, P-iris Lens (IB8382-T, IB8382-ET)
- Removable IR-cut Filter for Day & Night Function
- Built-in IR Illuminators, Effective up to 30 Meters
- 3D Noise Reduction for Low-light Conditions
- Smart IR Technology to Avoid Overexposure
- Smart Stream to Optimize Bandwidth Efficiency
- Real-time H.264, and MJPEG Compression
- Two-way Audio
- WDR Enhancement for Unparalleled Visibility in Extremely Bright and Dark Environments
- Weather-proof IP66-rated and Vandal-proof IK10-rated Housing
- Extreme Weather Support with PoE (IB8382-EF3/-ET)
- VIVOTEK VCA (Video Content Analysis) Support



Smart Stream - Manual Mode



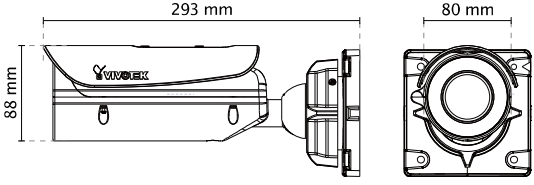
Entrance



Campus



Technical Specifications

Model	IB8382-F3/IB8382-EF3 IB8382-T/IB8382-ET	VCA*	Line crossing detection, field detection, loitering detection
System Information		Alarm and Event	
CPU	Multimedia SoC (System-on-Chip)	Alarm Triggers	Video motion detection, manual trigger, digital input, periodical trigger, system boot, recording notification, camera tampering detection, audio detection
Flash	1Gb	Alarm Events	Event notification using digital output, HTTP, SMTP, FTP and NAS server, SD Card File upload via HTTP, SMTP, FTP, NAS server and SD card
RAM	4Gb	General	
Camera Features		Smart Focus System	IB8382-T/IB8382-ET: Remote Focus
Image Sensor	1/3.2" Progressive CMOS	Connectors	RJ-45 cable connector for Network/PoE connection Audio input Audio output DC 12V power input Digital input*1 Digital output*1
Maximum Resolution	2560x1920 (5MP)	LED Indicator	System power and status indicator
Lens Type	Vari-focal, Remote Focus (IB8382-T/-ET), Fixed-focal (IB8382-F3/-EF3)	Power Input	DC 12V IEEE 802.3at PoE
Focal Length	IB8382-F3/IB8382-EF3: f = 3.6 mm IB8382-T/IB8382-ET: f = 3 ~ 9 mm	Power Consumption	IB8382-F3: Max. 7.5 W (DC12V) Max. 9 W (PoE) IB8382-T: Max. 8 W (DC12V) Max. 9.5 W (PoE) IB8382-EF3/IB8382-ET: Max. 21 W (DC12V) Max. 25 W (PoE)
Aperture	IB8382-F3/IB8382-EF3: F2.1 IB8382-T/IB8382-ET: F1.2 ~ F2.3	Dimensions	Ø 88 x 293 mm
Auto-iris	P-iris (IB8382-T/IB8382-ET)	Weight	Net: 1264 g
Field of View	IB8382-F3/IB8382-EF3: 92° (Horizontal) 76° (Vertical) 105° (Diagonal) IB8382-T/IB8382-ET: 35° ~ 78° (Horizontal) 27° ~ 54° (Vertical) 44° ~ 100° (Diagonal)	Casing	Weather-proof IP66-rated housing, IK10 (Camera body)
Shutter Time	1/5 sec. to 1/32,000 sec.	Safety Certifications	IB8382-F3/-EF3: CE, LVD, FCC ClassB, VCCI, C-Tick IB8382-T/-ET: CE, LVD, FCC ClassA, VCCI, C-Tick, UL
WDR Technology	WDR Enhanced	Operating Temperature	IB8382-T/-F3: Starting Temperature: -10°C ~ 50°C (14°F ~ 122°F) Working Temperature: -20°C ~ 50°C (-4°F ~ 122°F) IB8382-ET/-EF3: Starting Temperature: -40°C ~ 50°C (-40°F ~ 122°F) Working Temperature: -50°C ~ 50°C (-58°F ~ 122°F)
Day/Night	Removable IR-cut filter for day & night function	Warranty	IB8382-F3/-EF3: 24 months IB8382-T/-ET: 36 months
Minimum Illumination	IB8382-F3/IB8382-EF3: 0.089 Lux @ F2.1 (Color) 0.001 Lux @ F2.1 (B/W) IB8382-T/IB8382-ET: 0.04 Lux @ F1.2 (Color) 0.001 Lux @ F1.2 (B/W)	System Requirements	
Pan/tilt/zoom Functionalities	ePTZ: 48x digital zoom (4x on IE plug-in, 12x built in)	Operating System	Microsoft Windows 7/8/Vista/XP/2000
IR Illuminators	Built-in IR illuminators, effective up to 30 meters with Smart IR IR LED*8	Web Browser	Mozilla Firefox 7-10 (Streaming only) Internet Explorer 7/8/9/10/11
On-board Storage	SD/SDHC/SDXC card slot	Other Players	VLC: 1.1.11 or above Quicktime: 7 or above
Video		Included Accessories	
Compression	H.264 & MJPEG	CD	User's manual, quick installation guide, Installation Wizard 2, ST7501 32-channel recording software
Maximum Frame Rate	H.264: 15 fps @ 2560x1920 15 fps @ 2408x1536 30 fps @ 1920x1080 MJPEG: 15 fps @ 2560x1920 15 fps @ 2408x1536 30 fps @ 1920x1080	Others	Quick installation guide, warranty card, sun shield, wall mount bracket, waterproof RJ45 Ethernet enclosure, alignment sticker / desiccant bag, waterproof connector, screw
Maximum Streams	4 simultaneous streams	Dimensions	
S/N Ratio	Above 65 dB		
Dynamic Range	70 dB		
Video Streaming	Adjustable resolution, quality and bitrate		
Image Settings	Adjustable image size, quality and bit rate, time stamp, text overlay, flip & mirror, configurable brightness, contrast, saturation, sharpness, white balance, exposure control, gain, backlight compensation, privacy masks, scheduled profile settings, Seamless recording, Smart Stream, 3D Noise Reduction, Video Rotation, Defog		
Audio			
Audio Capability	Audio input/output (full duplex)		
Compression	G.711, G.726		
Interface	External microphone input Audio output		
Network			
Users	Live viewing for up to 10 clients		
Protocols	IPv4, IPv6, TCP/IP, HTTP, HTTPS, UPnP, RTSP/RTP/RTCP, IGMP, SMTP, FTP, DHCP, NTP, DNS, DDNS, PPPoE, CoS, QoS, SNMP, 802.1X, UDP, ICMP, ARP, SSL, TLS		
Interface	10Base-T/100 BaseTX Ethernet (RJ-45) *It is highly recommended to use standard Cat. 5e & Cat. 6 cables which are compliant with the 3P/ETL standard.		
ONVIF	Supported, specification available at www.onvif.org		
Intelligent Video			
Video Motion Detection	Five-window video motion detection		

* Available per project request

Compatible Accessories

Mounting Kits



AM-311
Pole Mount Adaptor



AM-411
Corner Mount Adaptor



AM-714
Junction Box

All specifications are subject to change without notice. Copyright © VIVOTEK INC. All rights reserved.

Ver. 5

