



# IB8382-F3/-EF3 IB8382-T/-ET

## Bullet Network Camera



5MP · P-iris · 30M IR · Remote Focus · IP66 · IK10 · 3DNR · Smart IR · Cable Management · Extreme Weather · Smart Stream

VIVOTEK's IB8382 is a series of economic professional outdoor bullet network cameras in VIVOTEK's 5MP Lite series which offer up to 15 fps at 5-Megapixel or 30 fps at 1080p resolution at a competitive price. Equipped with a new high resolution image sensor, different from other 5MP cameras, the IB8382 series provides sharper image quality and finer detail at a cost-effective price. And with powerful 3D Noise Reduction technology and Smart Stream technology the IB8382 series can also optimize resolution for a desired object or area to maximize efficiency of bandwidth usage.

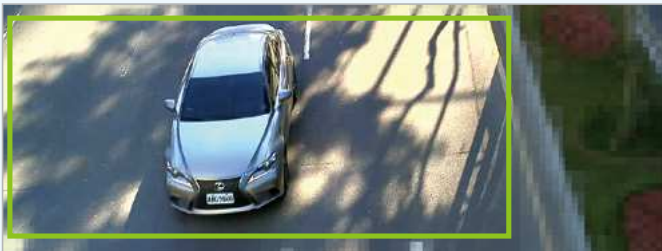
To create the perfect focus required to reap the benefits of higher resolutions, VIVOTEK's IB8382 series provides the options of both fixed focus, used for simple operation without electrical power, and remote focus with built-in stepping motors and P-iris for precise adjustment remotely.

To provide higher resolution in outdoor and harsh environments, VIVOTEK's IB8382 series is also armed with IP66-rated housing to help the camera body withstand rain, dust and high pressure water jets from any direction, while its IK10-rated housing provides protection against acts of vandalism or other impacts. Additionally, a wide operating temperature range further improves the IB8382-EF3 and IB8382-ET's performance and reliability in extremely cold or warm weather, even when using PoE.

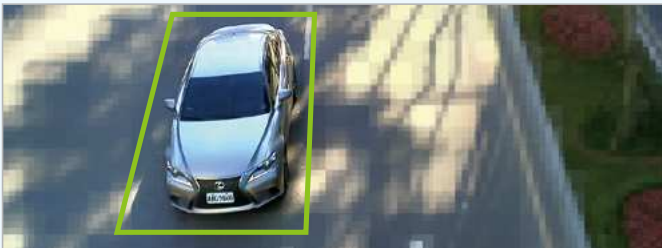
With the highly flexible VADP (VIVOTEK Application Development Platform), users can extend the features of this series by adding third-party applications for the IB8382-F3, IB8382-EF3, IB8382-T, and IB8382-ET. Thus the IB8382 series is not only equipped with multiple focusing methods and wide temperature range options, is but ideal for a wide variety of applications.

### Key Features

- 5-Megapixel CMOS Sensor
- 15 fps @ 2560x1920, 30 fps @ 1920x1080
- 3 ~ 9 mm Vari-focal, Remote Focus, P-iris Lens (IB8382-T, IB8382-ET)
- Removable IR-cut Filter for Day & Night Function
- Built-in IR Illuminators, Effective up to 30 Meters
- 3D Noise Reduction for Low-light Conditions
- Smart IR Technology to Avoid Overexposure
- Smart Stream to Optimize Bandwidth Efficiency
- Real-time H.264, and MJPEG Compression
- Two-way Audio
- WDR Enhancement for Unparalleled Visibility in Extremely Bright and Dark Environments
- Weather-proof IP66-rated and Vandal-proof IK10-rated Housing
- Extreme Weather Support with PoE (IB8382-EF3/-ET)
- VIVOTEK VCA (Video Content Analysis) Support



Smart Stream - Manual Mode



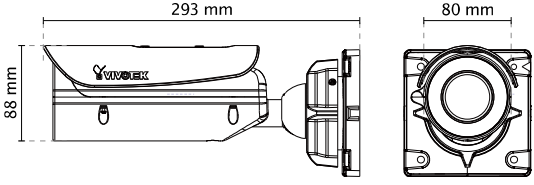
Entrance



Campus



## Technical Specifications

|                                      |   |  |  |
|--------------------------------------|---|--|--|
| <b>Model</b>                         | IB8382-F3/IB8382-EF3<br>IB8382-T/IB8382-ET  | <b>VCA*</b>  | Line crossing detection, field detection, loitering detection  |
| <b>System Information</b>            |   | <b>Alarm and Event</b>   |  |
| <b>CPU</b>                           | Multimedia SoC (System-on-Chip)   | <b>Alarm Triggers</b>  | Video motion detection, manual trigger, digital input, periodical trigger, system boot, recording notification, camera tampering detection, audio detection  |
| <b>Flash</b>                         | 1Gb   | <b>Alarm Events</b>  | Event notification using digital output, HTTP, SMTP, FTP and NAS server, SD Card<br>File upload via HTTP, SMTP, FTP, NAS server and SD card  |
| <b>RAM</b>                           | 4Gb   | <b>General</b>   |  |
| <b>Camera Features</b>               |   | <b>Smart Focus System</b>  | IB8382-T/IB8382-ET: Remote Focus   |
| <b>Image Sensor</b>                  | 1/3.2" Progressive CMOS   | <b>Connectors</b>  | RJ-45 cable connector for Network/PoE connection<br>Audio input<br>Audio output<br>DC 12V power input<br>Digital input*1<br>Digital output*1   |
| <b>Maximum Resolution</b>            | 2560x1920 (5MP)   | <b>LED Indicator</b>   | System power and status indicator  |
| <b>Lens Type</b>                     | Vari-focal, Remote Focus (IB8382-T/-ET), Fixed-focal (IB8382-F3/-EF3)   | <b>Power Input</b>   | DC 12V<br>IEEE 802.3at PoE   |
| <b>Focal Length</b>                  | IB8382-F3/IB8382-EF3: f = 3.6 mm<br>IB8382-T/IB8382-ET: f = 3 ~ 9 mm  | <b>Power Consumption</b>   | IB8382-F3:<br>Max. 7.5 W (DC12V)<br>Max. 9 W (PoE)<br>IB8382-T:<br>Max. 8 W (DC12V)<br>Max. 9.5 W (PoE)<br>IB8382-EF3/IB8382-ET:<br>Max. 21 W (DC12V)<br>Max. 25 W (PoE)   |
| <b>Aperture</b>                      | IB8382-F3/IB8382-EF3: F2.1<br>IB8382-T/IB8382-ET: F1.2 ~ F2.3   | <b>Dimensions</b>  | Ø 88 x 293 mm  |
| <b>Auto-iris</b>                     | P-iris (IB8382-T/IB8382-ET)   | <b>Weight</b>  | Net: 1264 g  |
| <b>Field of View</b>                 | IB8382-F3/IB8382-EF3:<br>92° (Horizontal)<br>76° (Vertical)<br>105° (Diagonal)<br>IB8382-T/IB8382-ET:<br>35° ~ 78° (Horizontal)<br>27° ~ 54° (Vertical)<br>44° ~ 100° (Diagonal)  | <b>Casing</b>  | Weather-proof IP66-rated housing, IK10 (Camera body)   |
| <b>Shutter Time</b>                  | 1/5 sec. to 1/32,000 sec.   | <b>Safety Certifications</b>   | IB8382-F3/-EF3:<br>CE, LVD, FCC ClassB, VCCI, C-Tick<br>IB8382-T/-ET:<br>CE, LVD, FCC ClassA, VCCI, C-Tick, UL   |
| <b>WDR Technology</b>                | WDR Enhanced  | <b>Operating Temperature</b>   | IB8382-T/-F3:<br>Starting Temperature: -10°C ~ 50°C (14°F ~ 122°F)<br>Working Temperature: -20°C ~ 50°C (-4°F ~ 122°F)<br>IB8382-ET/-EF3:<br>Starting Temperature: -40°C ~ 50°C (-40°F ~ 122°F)<br>Working Temperature: -50°C ~ 50°C (-58°F ~ 122°F) |
| <b>Day/Night</b>                     | Removable IR-cut filter for day & night function  | <b>Warranty</b>  | IB8382-F3/-EF3: 24 months<br>IB8382-T/-ET: 36 months   |
| <b>Minimum Illumination</b>          | IB8382-F3/IB8382-EF3:<br>0.089 Lux @ F2.1 (Color)<br>0.001 Lux @ F2.1 (B/W)<br>IB8382-T/IB8382-ET:<br>0.04 Lux @ F1.2 (Color)<br>0.001 Lux @ F1.2 (B/W)   | <b>System Requirements</b>   |  |
| <b>Pan/tilt/zoom Functionalities</b> | ePTZ:<br>48x digital zoom (4x on IE plug-in, 12x built in)  | <b>Operating System</b>  | Microsoft Windows 7/8/Vista/XP/2000  |
| <b>IR Illuminators</b>               | Built-in IR illuminators, effective up to 30 meters with Smart IR<br>IR LED*8   | <b>Web Browser</b>   | Mozilla Firefox 7-10 (Streaming only)<br>Internet Explorer 7/8/9/10/11   |
| <b>On-board Storage</b>              | SD/SDHC/SDXC card slot  | <b>Other Players</b>   | VLC: 1.1.11 or above<br>Quicktime: 7 or above  |
| <b>Video</b>                         |   | <b>Included Accessories</b>  |  |
| <b>Compression</b>                   | H.264 & MJPEG   | <b>CD</b>  | User's manual, quick installation guide, Installation Wizard 2, ST7501 32-channel recording software   |
| <b>Maximum Frame Rate</b>            | H.264:<br>15 fps @ 2560x1920<br>15 fps @ 2408x1536<br>30 fps @ 1920x1080<br>MJPEG:<br>15 fps @ 2560x1920<br>15 fps @ 2408x1536<br>30 fps @ 1920x1080  | <b>Others</b>  | Quick installation guide, warranty card, sun shield, wall mount bracket, waterproof RJ45 Ethernet enclosure, alignment sticker / desiccant bag, waterproof connector, screw  |
| <b>Maximum Streams</b>               | 4 simultaneous streams  | <b>Dimensions</b>  |  |
| <b>S/N Ratio</b>                     | Above 65 dB   |  |  |
| <b>Dynamic Range</b>                 | 70 dB   |  |  |
| <b>Video Streaming</b>               | Adjustable resolution, quality and bitrate  |  |  |
| <b>Image Settings</b>                | Adjustable image size, quality and bit rate, time stamp, text overlay, flip & mirror, configurable brightness, contrast, saturation, sharpness, white balance, exposure control, gain, backlight compensation, privacy masks, scheduled profile settings, Seamless recording, Smart Stream, 3D Noise Reduction, Video Rotation, Defog |  |  |
| <b>Audio</b>                         |   |  |  |
| <b>Audio Capability</b>              | Audio input/output (full duplex)  |  |  |
| <b>Compression</b>                   | G.711, G.726  |  |  |
| <b>Interface</b>                     | External microphone input<br>Audio output   |  |  |
| <b>Network</b>                       |   |  |  |
| <b>Users</b>                         | Live viewing for up to 10 clients   |  |  |
| <b>Protocols</b>                     | IPv4, IPv6, TCP/IP, HTTP, HTTPS, UPnP, RTSP/RTP/RTCP, IGMP, SMTP, FTP, DHCP, NTP, DNS, DDNS, PPPoE, CoS, QoS, SNMP, 802.1X, UDP, ICMP, ARP, SSL, TLS  |  |  |
| <b>Interface</b>                     | 10Base-T/100 BaseTX Ethernet (RJ-45)<br>*It is highly recommended to use standard Cat. 5e & Cat. 6 cables which are compliant with the 3P/ETL standard.   |  |  |
| <b>ONVIF</b>                         | Supported, specification available at <a href="http://www.onvif.org">www.onvif.org</a>  |  |  |
| <b>Intelligent Video</b>             |   |  |  |
| <b>Video Motion Detection</b>        | Five-window video motion detection  |  |  |

\* Available per project request

## Compatible Accessories

### Mounting Kits



**AM-311**  
Pole Mount Adaptor



**AM-411**  
Corner Mount Adaptor



**AM-714**  
Junction Box

All specifications are subject to change without notice. Copyright © VIVOTEK INC. All rights reserved.

Ver. 5

