



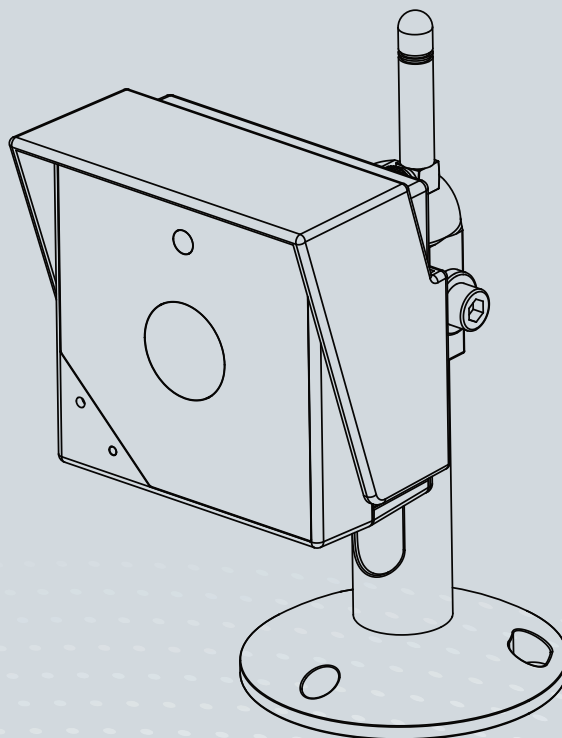
IP8336W Wireless Cube  
Network Camera

# Quick Installation Guide

English | 繁體中文 | 簡體中文 | 日本語 | Français | Español | Deutsch | Português | Italiano | Türkçe | Polski | Русский | Český | Svenska | Nederlands

Dansk | Indonesia | العربية

1MP • Day & Night • Weather-proof • 802.11n WLAN





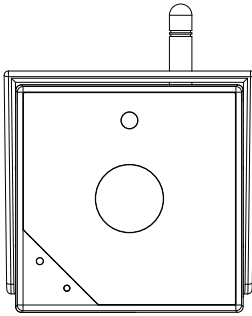
## Warning Before Installation

- Power off the Network Camera as soon as smoke or unusual odors are detected.
- Do not place the Network Camera around heat sources, such as a television or oven.
- Keep the Network Camera away from direct sunlight.
- Do not place the Network Camera on unsteady surfaces.
- Do not disassemble the Network Camera.
- Do not insert sharp or tiny objects into the Network Camera.
- Keep the Network Camera away from water. If the Network Camera becomes wet, power off immediately.
- Refer to your user's manual for the operating temperature.
- Do not place the Network Camera in high humidity environments.
- Do not touch the Network Camera during a lightning storm.
- Do not drop the Network Camera.

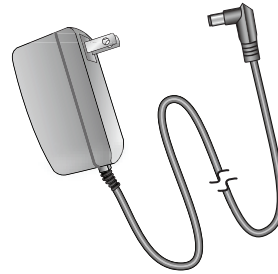
# 1

## Package Contents

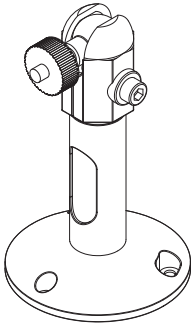
### ● IP8336W



### ● Power Adaptor (+12V, 2A)



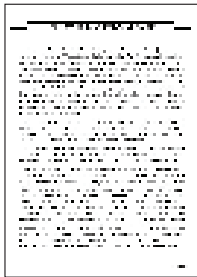
### ● Camera Stand



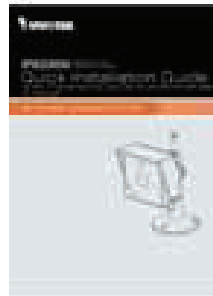
### ● Software CD



### ● Warranty Card



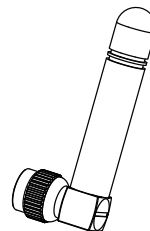
### ● Quick Installation Guide



### ● Screws



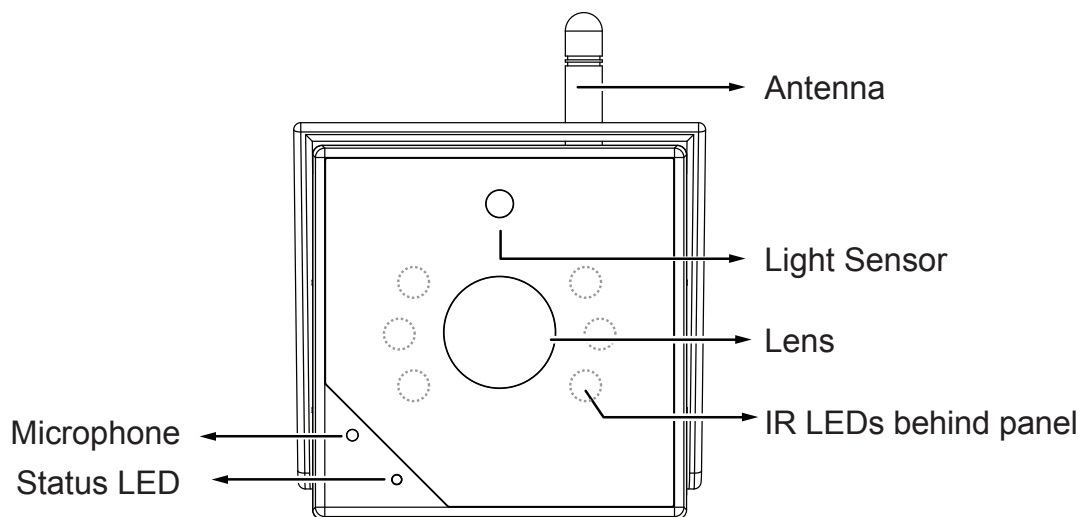
### ● Antenna



## 2

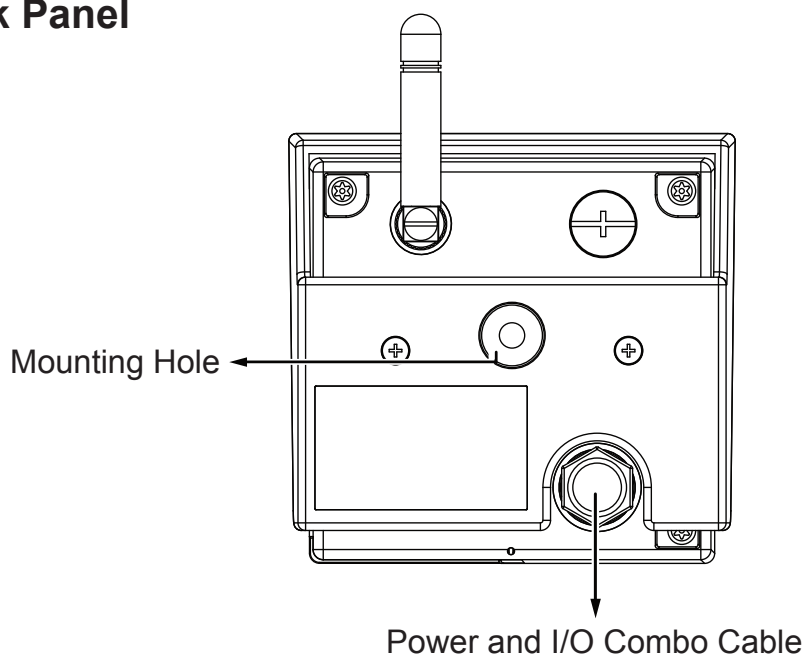
## Physical Description

## ● Front Panel

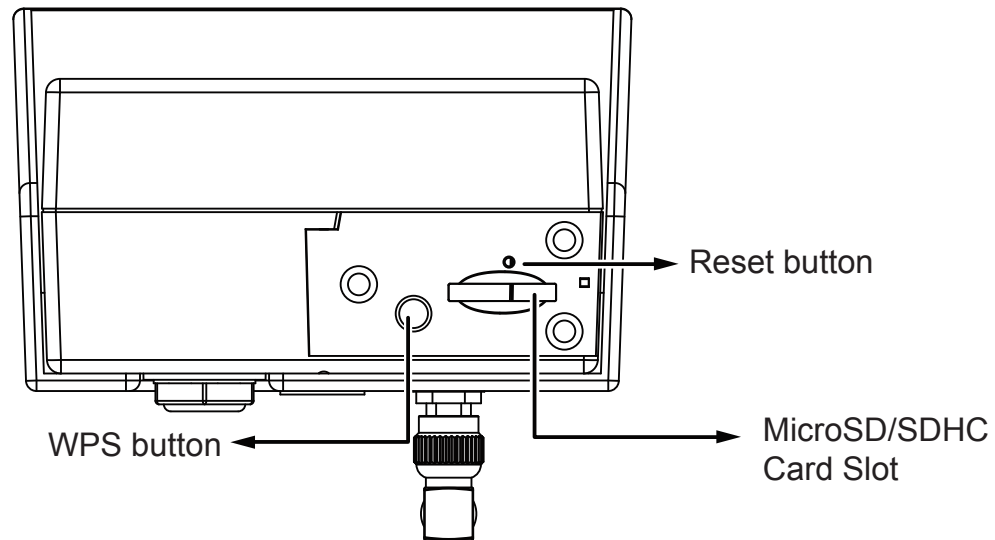


	Item	LED status	Description
LED Definitions	1	Steady Red	Powered and system booting, or network failed
	2	Blue LED blinks every 0.15 sec.	Searching for WPS
	3	Green LED blinks every 1 sec.	Network connected to an AP
	4	Green and RED blink consecutively every 0.15 sec.	Upgrading firmware
	5	Steady Blue	Operating in camera default AP mode
	6	Orange blinks every 0.15 sec.	Restoring defaults
	7	All LED off	Powered off

## ● Back Panel

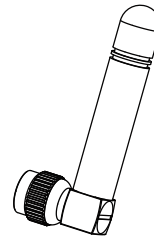


## ● Bottom View



### NOTE:

An antenna comes with the camera. Install it by turning clockwise to attach to the connector.

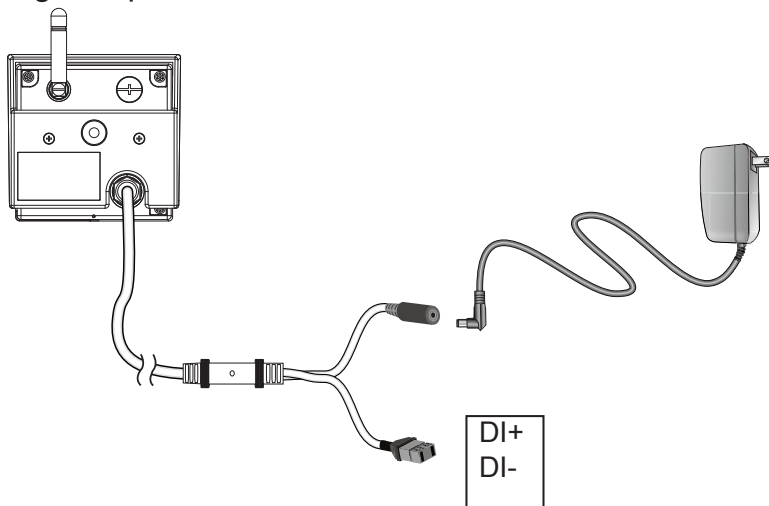


## 3

## Network Deployment

### Power Connection

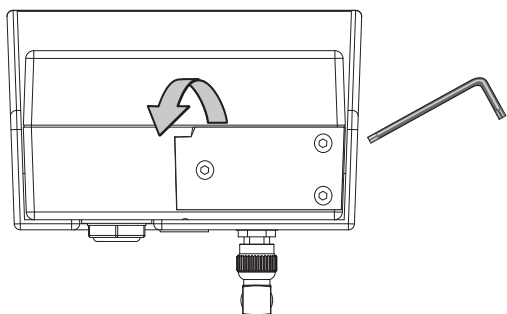
1. If you have external devices such as a sensors and alarm, make connections from the digital input connector.



2. Connect the power line to the power adaptor.

## Wireless Connection #1: Using the WPS Button

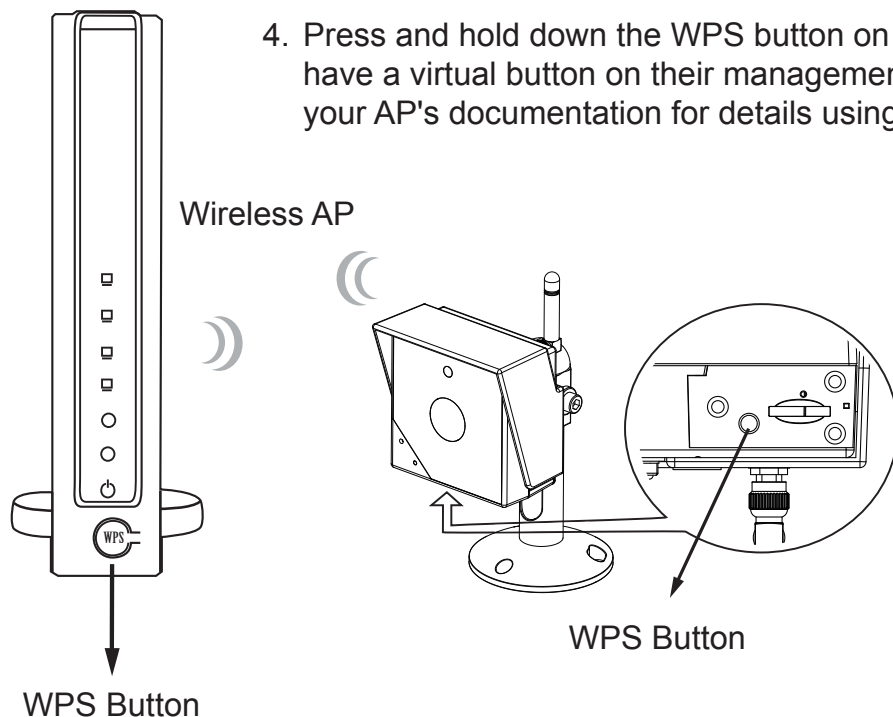
1. Make sure your AP (Access Point) and Operating System support WPS (Wi-Fi Protected Setup) functions. WPS enables easy setup with compatible APs.
2. Use the included hex wrench to open the bottom cover.



When powered on, the camera LED should light red for a minute, and then turn blue. When lit blue, the camera operates in the **AP mode**.

3. Use the hex wrench to press the WPS button for 1 second.

4. Press and hold down the WPS button on your AP (some router/AP will have a virtual button on their management software instead). Refer to your AP's documentation for details using its WPS functions.



The camera LED should flash green. When WPS configuration is done, wireless connectivity will be established and the security encryption, such as WEP or WPA-PSK, will be synchronized with the AP. Use the IW2 utility to find the camera. As for IP setting, the camera's use of DHCP or static IP is determined by your configuration on the network camera via the web-based configuration of firmware. The camera's default is DHCP.



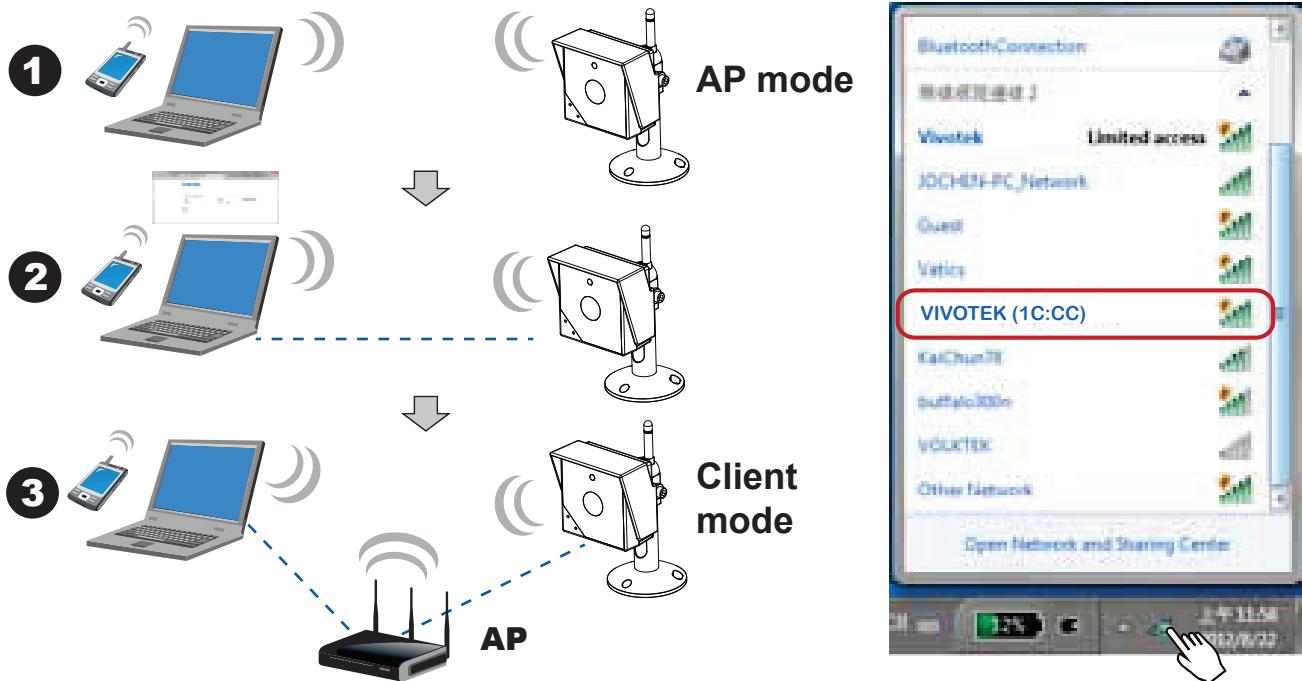
### NOTE:

1. WPS may not work if your AP is configured with a "hidden" SSID.
2. If no WPS-enabled AP is detected, the camera will continue searching for AP for 2 minutes. After that, the wireless setup will be cancelled.

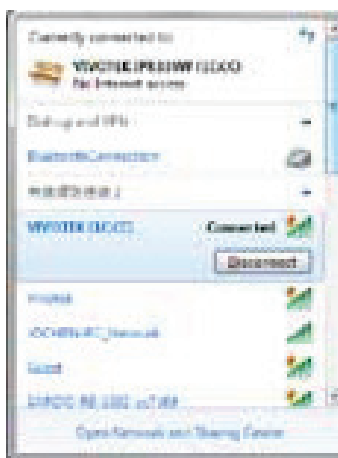
## Wireless Connection #2: Connection without WPS

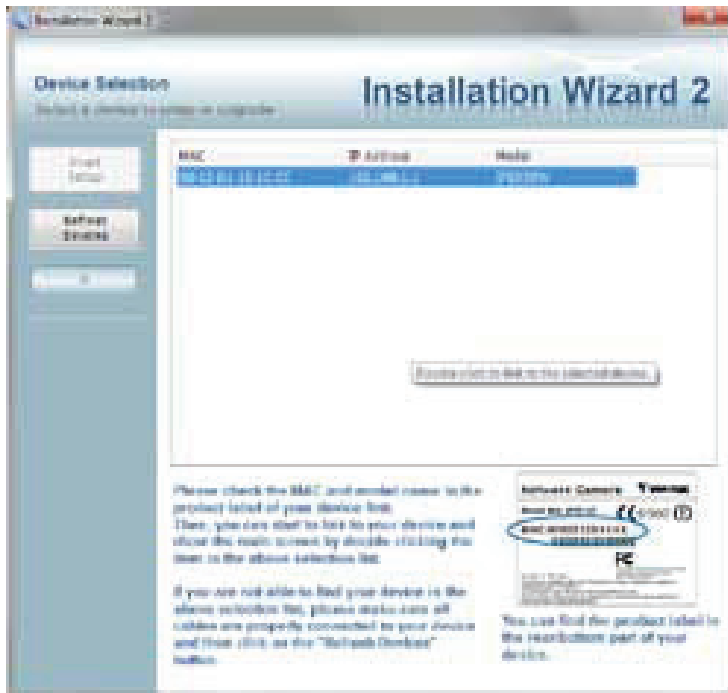
If not using the WPS method, you can manually configure the camera:

1. Connect power to the camera. By default, the camera operates in the AP mode. Connect to the camera using a Wi-Fi capable notebook or a computer with a wireless adaptor. Open the internet dialog box by clicking the wireless networks icon on the system tray.



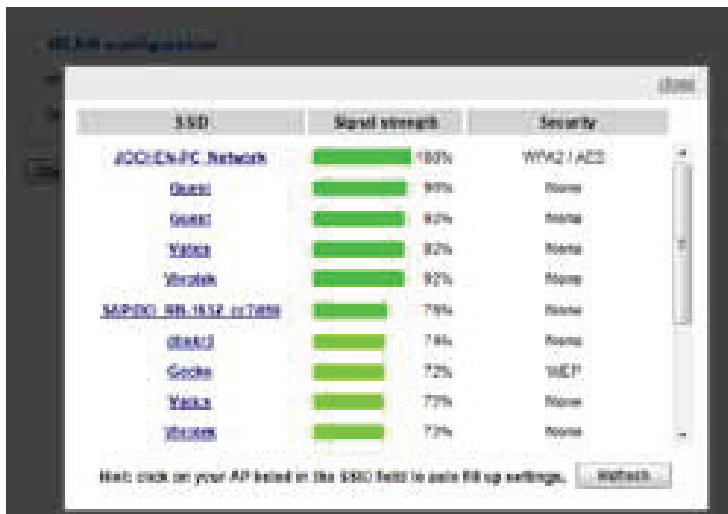
2. Right-click or double-click on the VIVOTEK (MAC addr) icon. The camera name is presented as: "VIVOTEK: (the last 4 digits of the camera's MAC address)."  
Open a browser session using the camera's default IP "**192.168.1.1**"





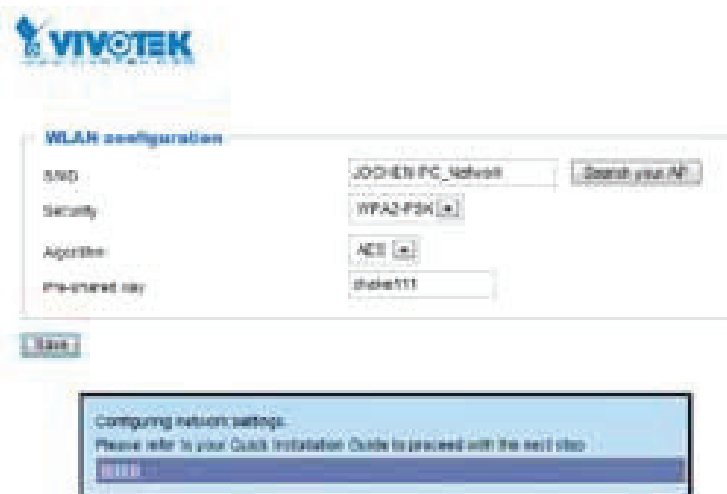
You can also discover the camera using the IW2 utility. Install the IW2 utility from the included product CD.

3. Enter your wireless AP's SSID and security password to connect to an existing AP. You may also use the **"Search your AP"** button to locate an AP of your preference. Double-click on an AP to make the connection.



Select the security encryption, such as WEP or WPA-PSK, the algorithm, and enter the pre-share key. Click **Save** to proceed.

The camera will then operate in the **Client mode**.



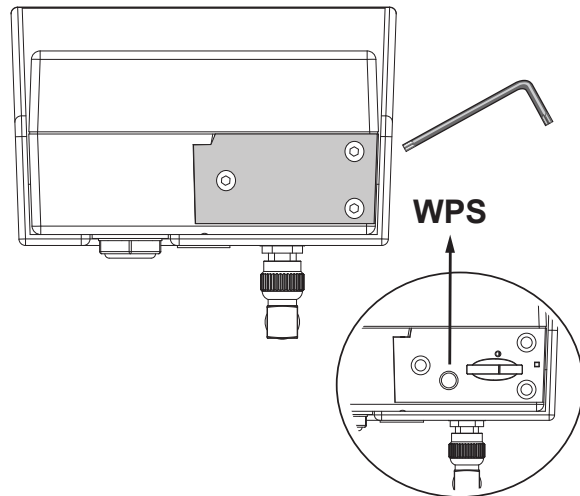


4. Open the IW2 utility. The camera will be assigned with a new IP address. Double-click on it to start a web session. The camera LED will start blinking green by every second.



#### NOTE:

When you encounter configuration errors, you can press the **WPS** button for 5 seconds to restore network settings. The camera will resume the **AP mode** and the LED will light blue.



5. A browser session with the Network Camera should prompt as shown below.
6. You should be able to see live video from your camera. You may also install the 32-channel recording software from the software CD in a deployment consisting of multiple cameras. For its installation details, please refer to its related documents.

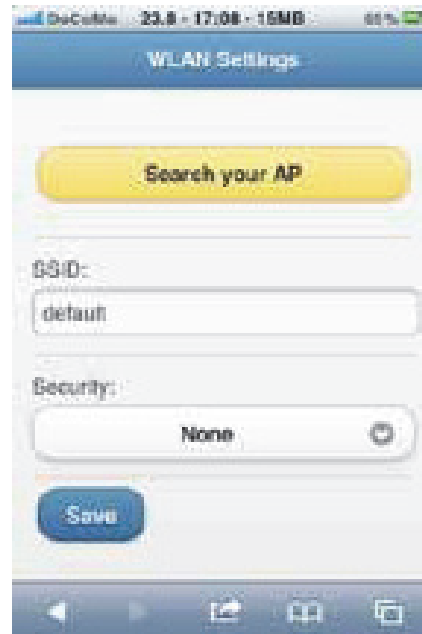


### Wireless Connection #3: Initial Setup Using a Cell Phone

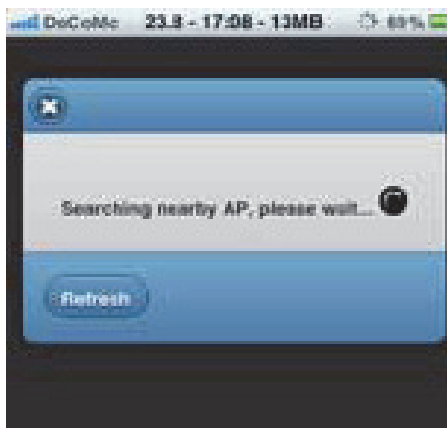
1. Connect power to the camera. Search for the camera in the Wi-Fi Networks. The camera initially operates in the **AP mode**. Screen captures have been taken from an iPhone®.



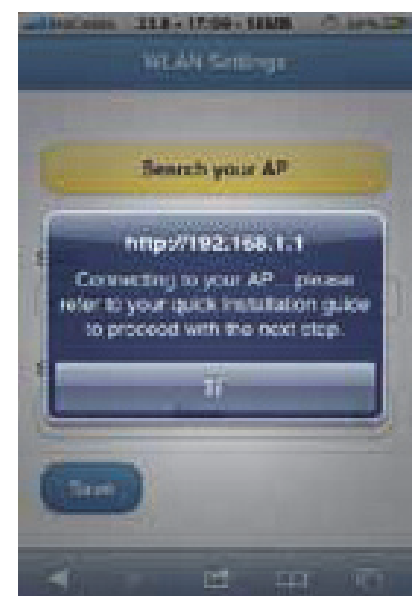
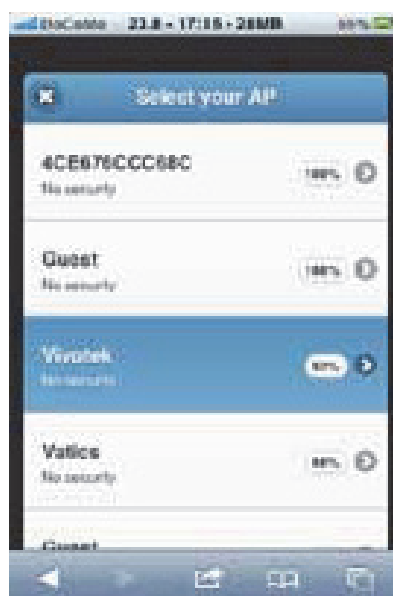
2. Once connected, you should connect the camera to another AP. You should open a browser, enter the camera's default IP (192.168.1.1) in the URL field. When connected, manually enter the SSID and security code for access to another AP, or use the "**Search your AP**" function to search for nearby APs.



The search may take several seconds.



3. Select and connect to a preferred AP.

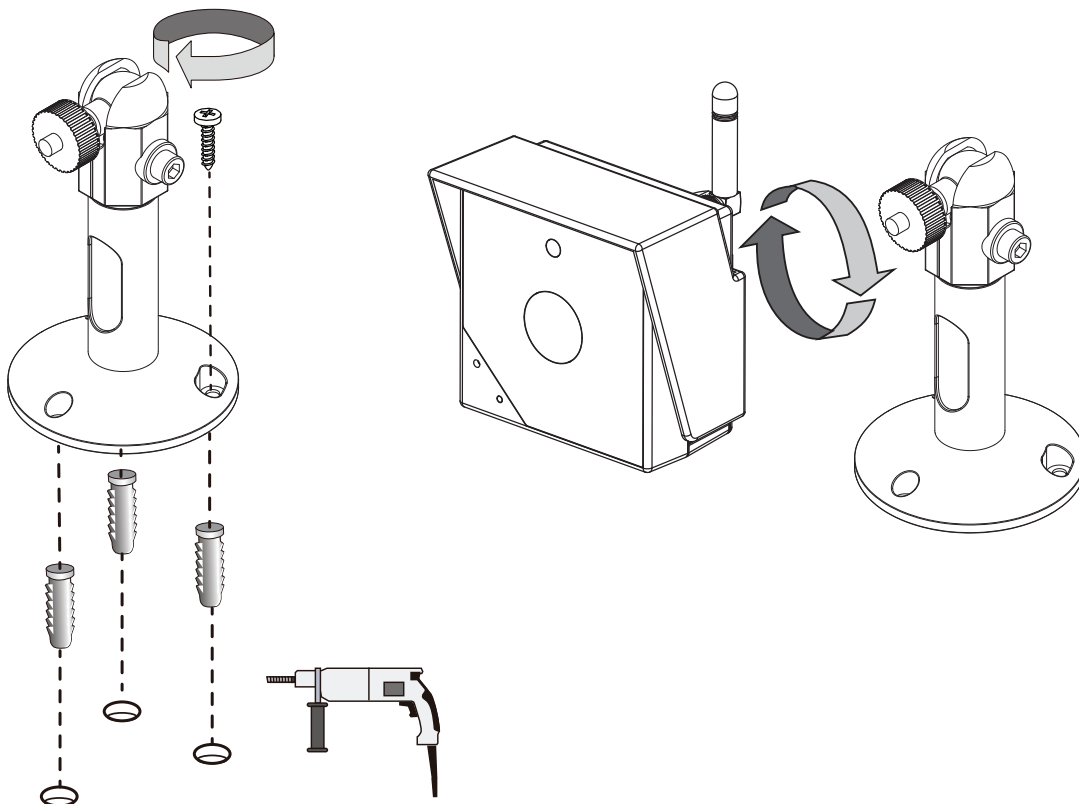


4. Open the IW2 utility on a PC or laptop located in the same subnet of the camera. The camera will be assigned with a new IP address by the AP. Double-click on it to start a web session.



## 4 Hardware Installation

1. Drill holes on a wall or ceiling.
2. Insert the plastic anchors, and then mount the camera stand by driving the included screws.
3. Close and secure the bottom cover if you opened it.
4. Attach the camera by turning it around the threaded mount.
5. Adjust the camera's shooting angle and secure the camera to the stand.



P/N:625019200G Rev. 1.0

All specifications are subject to change without notice.  
Copyright © 2013 VIVOTEK INC. All rights reserved.



**VIVOTEK INC.**

6F, No.192, Lien-Cheng Rd., Chung-Ho, New Taipei City, 235, Taiwan, R.O.C.  
| T: +886-2-82455282 | F: +886-2-82455532 | E: sales@vivotek.com

**VIVOTEK USA, INC.**

2050 Ringwood Avenue, San Jose, CA 95131  
| T: 408-773-8686 | F: 408-773-8298 | E: salesusa@vivotek.com