

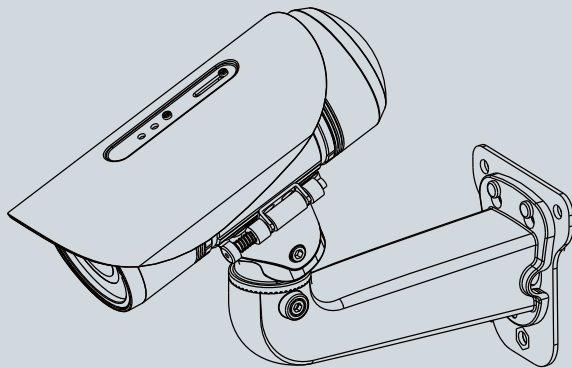


IP8361 Bullet Network Camera

Quick Installation Guide

English | 繁体中文 | 简体中文 | 日本語 | Français | Español | Deutsch | Português | Italiano | Türkçe | Polski | Русский | Česky | Svenska | العربية

2MP • Outdoor • Day & Night
Cable Management





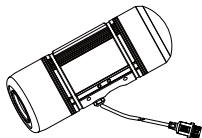
Warning Before Installation

- Power off the Network Camera as soon as smoke or unusual odors are detected.
- Refer to your user's manual for the operating temperature.
- Do not place the Network Camera on unsteady surfaces.
- Do not touch the Network Camera during a lightning storm.
- Do not insert sharp or tiny objects into the Network Camera.
- Do not drop the Network Camera.

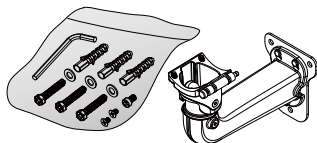
1

Package Contents

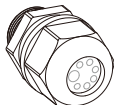
- IP8361 with an RJ45 Cable



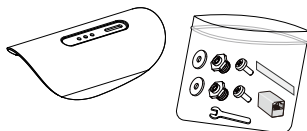
- Wall Mount Bracket



- Waterproof Connector (for backup use)



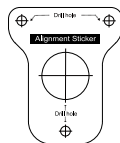
- Sun Shield / Wrench / RJ45 Female / Female Coupler / Double-sided Tape / Screws



- Waterproof Connector for RJ45 Ethernet Enclosure



- Alignment Sticker / Dessicant Bag



● Quick Installation Guide



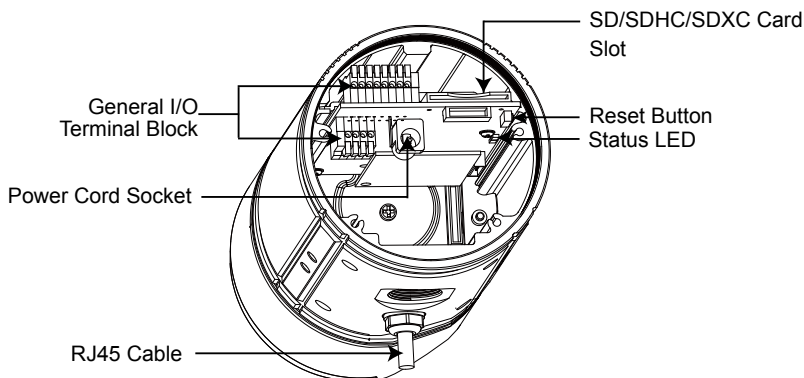
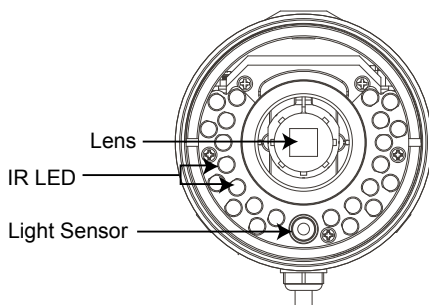
● Software CD



● Warranty Card



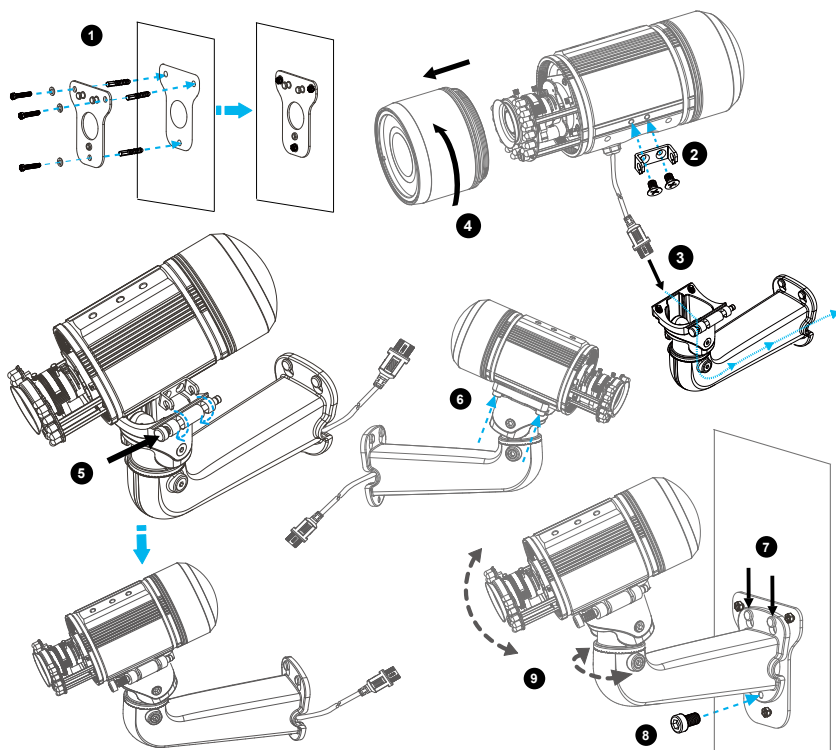
2 Physical Description



3

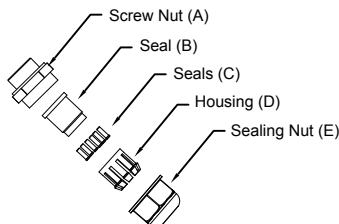
Hardware Installation

1. Attach the alignment sticker to the wall. Drill four holes into the wall. Then hammer the supplied plastic anchors into the holes and secure the plate with supplied screws.
2. Fix the intersection bracket to the side of the Network Camera with two screws.
3. Feed the RJ45 cable through the front opening of the wall mount bracket. (If you want to use external devices such as sensors and alarms, please refer to the assembling steps on the next page.)
4. Open the lens cover.
5. Push the spring mortise and hook the bracket onto the groove of the wall mount bracket.
6. Secure the two screws on the other side of the wall mount bracket.
7. Hang the wall mount bracket on the plate.
8. Fix the wall mount bracket with the supplied screw.
9. Adjust the angle of the wall mount bracket to aim at the shooting area.

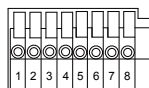


Waterproof Connector

● Components of the Waterproof Connector



● Pin Definition

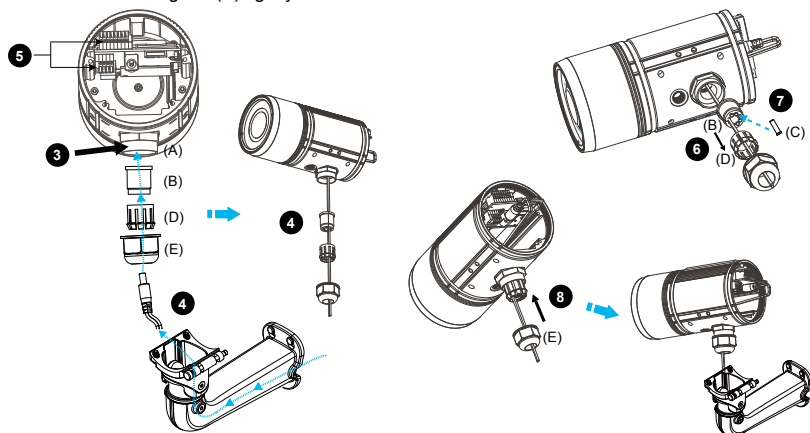


1	Power +12V
2	Digital Output
3	Digital Input
4	Ground
5	AC 24V
6	AC 24V
7	RS485 +
8	RS485 -

1	External MIC In
2	Ground
3	Audio Out
4	Ground

● Assembling Steps

1. Disassemble the components of the waterproof connector into part (A) ~ (E) as shown above.
2. Open the back cover of the Network Camera.
3. Remove the rubber stopper from the bottom of the Network Camera and secure the screw nut (A) tightly.
4. If you need extra power for external devices, please feed the power cable through the wall mount bracket and the waterproof connector (E --> D --> B --> A) as the illustration shown below. Then connect the power cord to the socket. Note: There are 7 holes on the seal (B), and the widest hole with a crack on the side is specific for power cord.
5. If you have external devices such as sensors and alarms, feed the cables through the wall mount bracket and the waterproof connector (E --> D --> B --> A) as the illustration shown below. Then refer to the pin definition to connect them to the general I/O terminal block. Note: The recommended cable gauge is 2.0 ~ 2.8 mm.
6. Push the seal (B) into the housing (D).
7. Insert the seals (C) into the empty holes on the seal (B) to avoid moisture.
8. Secure the sealing nut (E) tightly.

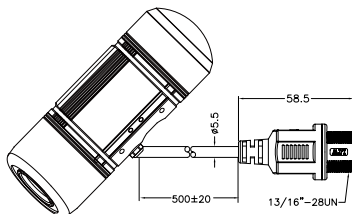


4

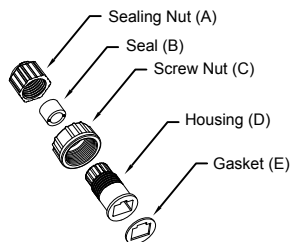
Cabling Assembly

RJ45 Cable Connector

● RJ45 Cable Dimension (unit: mm)

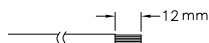


● Components of the Waterproof Connector



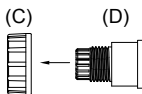
● Assembling Steps

- 1** Prepare an Ethernet cable and strip part of the sheath.

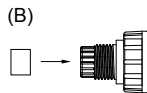


Recommended cable gauge: 24AWG
(0.51 mm)

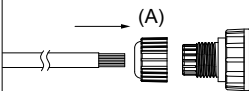
- 2** Insert the housing into the screw nut.



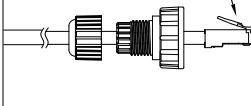
- 3** Insert the seal into the housing.



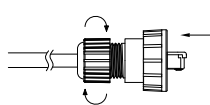
- 4** Insert the stripped Ethernet cable through the sealing nut and the housing.



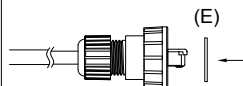
- 5** Clamp the cable with an RJ45 plug.



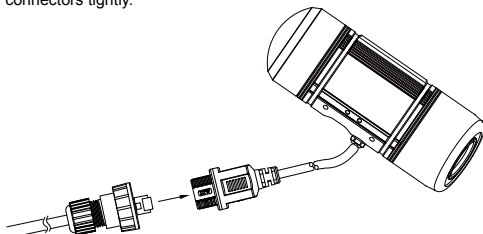
- 6** Push the RJ45 plug into the housing, then secure the sealing nut tightly.



- 7** Attach the gasket to the front of the housing.



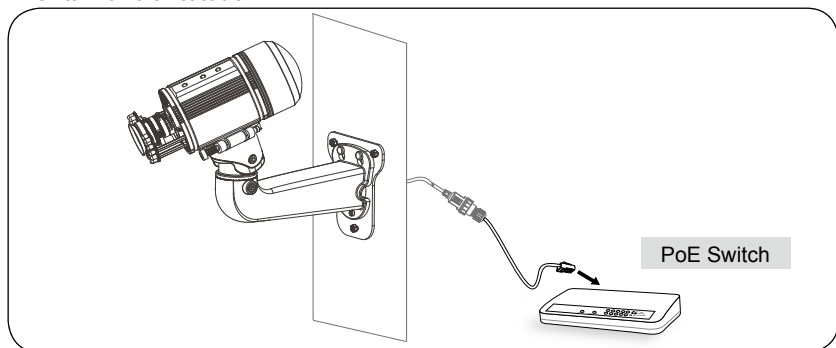
- 8** Connect the Ethernet cable to the RJ45 cable and secure the connectors tightly.



Power over Ethernet (PoE)

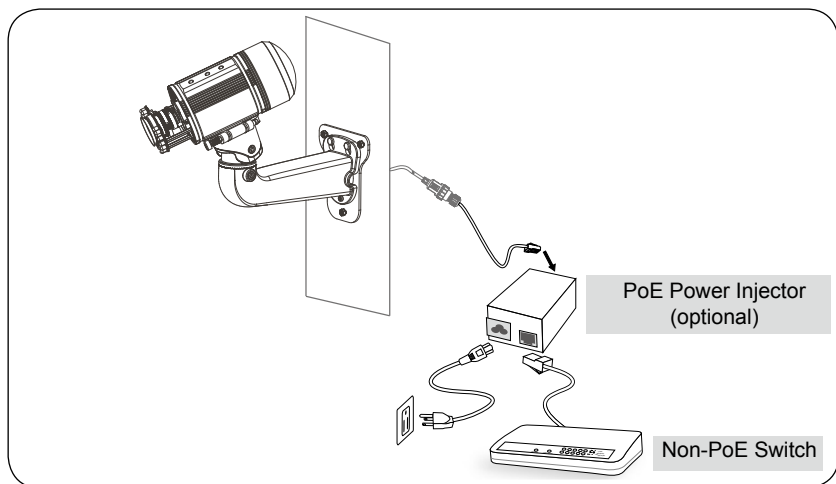
● When using a PoE-enabled switch

The Network Camera is PoE-compliant, allowing transmission of power and data via a single Ethernet cable. Follow the below illustration to connect the Network Camera to a PoE-enabled switch via Ethernet cable.



● When using a non-PoE switch

Use a PoE power injector (optional) to connect between the Network Camera and a non-PoE switch.



6 Assigning an IP Address

1. Install "Installation Wizard 2" from the Software Utility directory on the software CD.
2. The program will conduct an analysis of your network environment. After your network is analyzed, please click on the "Next" button to continue the program.
3. The program will search for VIVOTEK Video Receivers, Video Servers, and Network Cameras on the same LAN.
4. After a brief search, the main installer window will pop up. Double-click on the MAC address that matches the one printed on the camera label or the S/N number on the package box label to open a browser management session with the Network Camera.

7 Ready to Use

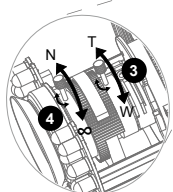
1. A browser session with the Network Camera should prompt as shown below
2. You should be able to see live video from your camera. You may also install the 32-channel recording software from the software CD in a deployment consisting of multiple cameras. For its installation details, please refer to its related documents.



For further setup, please refer to the user's manual on the software CD.

3. Unscrew the zoom controller to adjust the zoom factor. Upon completion, tighten the zoom controller.

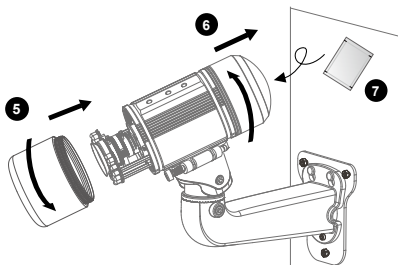
4. Unscrew the focus controller to adjust the focus range. Upon completion, tighten the focus controller.



5. Tighten the lens cover.

6. Open the back cover.

7. Tear down the aluminum foil vacuum bag and take out the dessicant bag. Attach the silica gel to the inner side of the back cover, then tighten the back cover. (Please replace the dessicant bag with a new one if you open the back cover after installation.)



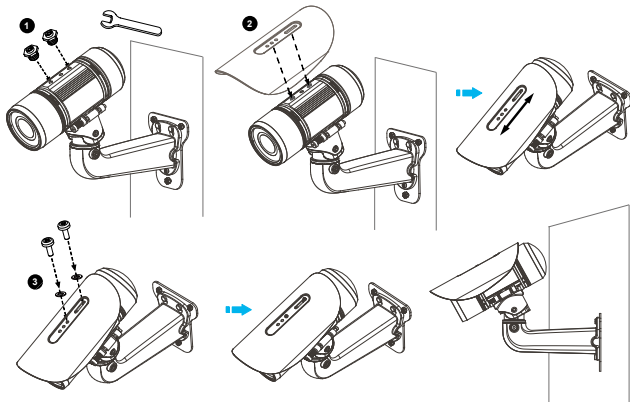
Note

If you want to use the supplied sun shield for outdoor environments, please follow the steps below to install:

1. Tighten the supplied two screws.

2. Attach the supplied sun shield to the Network Camera and slide it to the desired position.

3. Fix the sun shield with the supplied two screws.

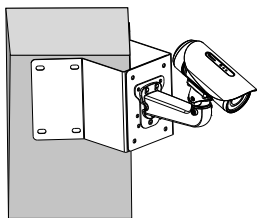


8

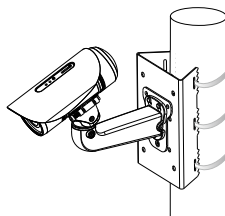
Accessories

VIVOTEK also provides other accessories for versatile applications as the following illustrations. Please visit VIVOTEK's official website for more purchase information.

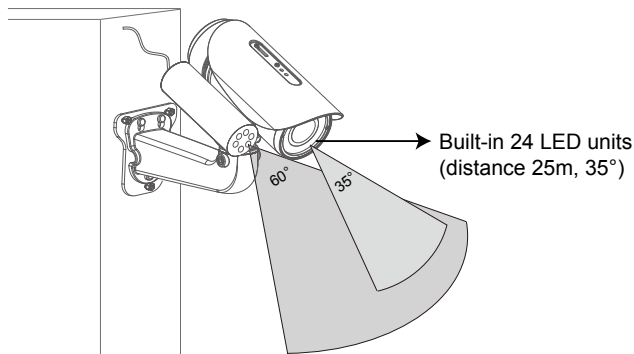
Corner Mount Bracket



Pole Mount Bracket



IR illuminator (distance 30m, 60°)



The 30m, 60° IR illuminator extends the coverage of the Network Camera and reduces the halo effect around captured images.



P/N:625018001G Rev. 1.1

All specifications are subject to change without notice.
Copyright © 2012 VIVOTEK INC. All rights reserved.



VIVOTEK INC.

6F, No.192, Lien-Cheng Rd., Chung-Ho, New Taipei City, 235, Taiwan, R.O.C.
| T: +886-2-82455282 | F: +886-2-82455532 | E: sales@vivotek.com

VIVOTEK USA, INC.

2050 Ringwood Avenue, San Jose, CA 95131
| T: 408-773-8686 | F: 408-773-8298 | E: salesusa@vivotek.com