

Quick Installation Guide

English | 繁體中文 | 簡體中文 | 日本語 | Français | Español | Deutsch | Português | Italiano | Türkçe | Polski | Русский | Česky | Svenska | العربية

IP8362 Network Camera

2 MP • Full HD • WDR Enhanced



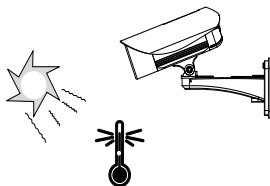


Warning Before Installation

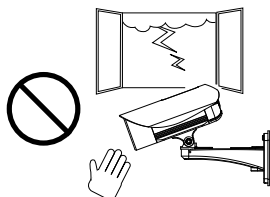
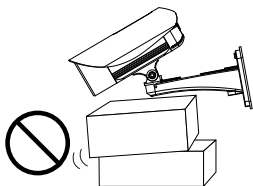
- **Power off the Network Camera as soon as smoke or unusual odors are detected.**
- **Refer to your user's manual for the operating temperature.**



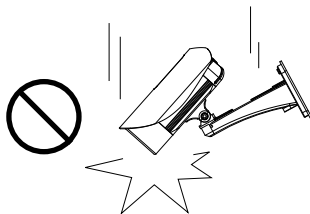
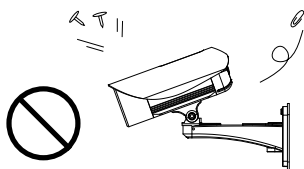
Contact your distributor in the event of occurrence.



- **Do not place the Network Camera on unsteady surfaces.**
- **Do not touch the Network Camera during a lightning storm.**



- **Do not insert sharp or tiny objects into the Network Camera.**
- **Do not drop the Network Camera.**

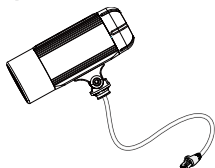


P/N: 625016600G

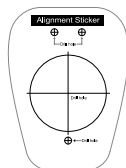
1

Package Contents

● IP8362

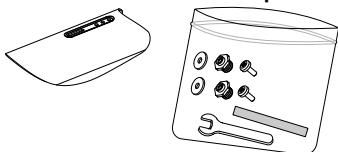


● Alignment Sticker

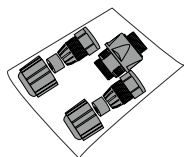


● Sun Shield

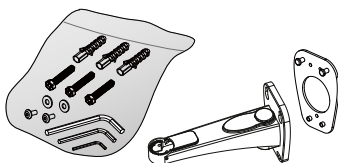
Wrench / Double-sided Tape / Screws



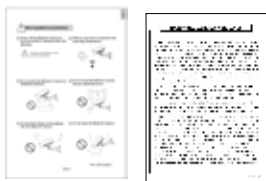
● Waterproof Connector



● Wall Mount Bracket



● Quick Installation Guide / Warranty Card



● Moisture Absorber

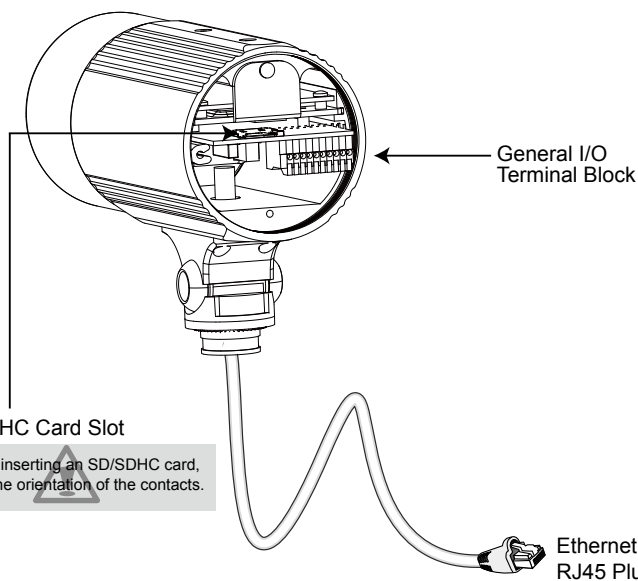
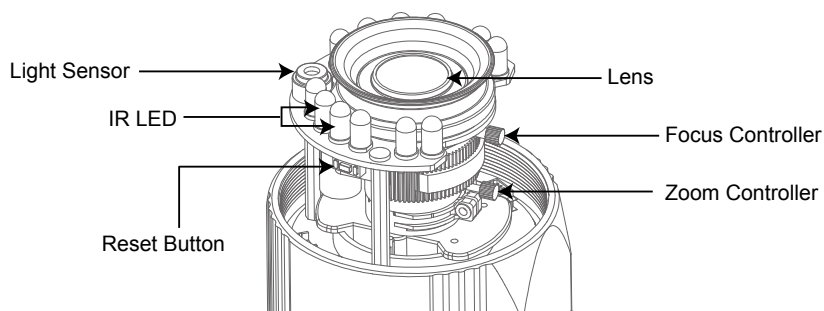


● Software CD



2

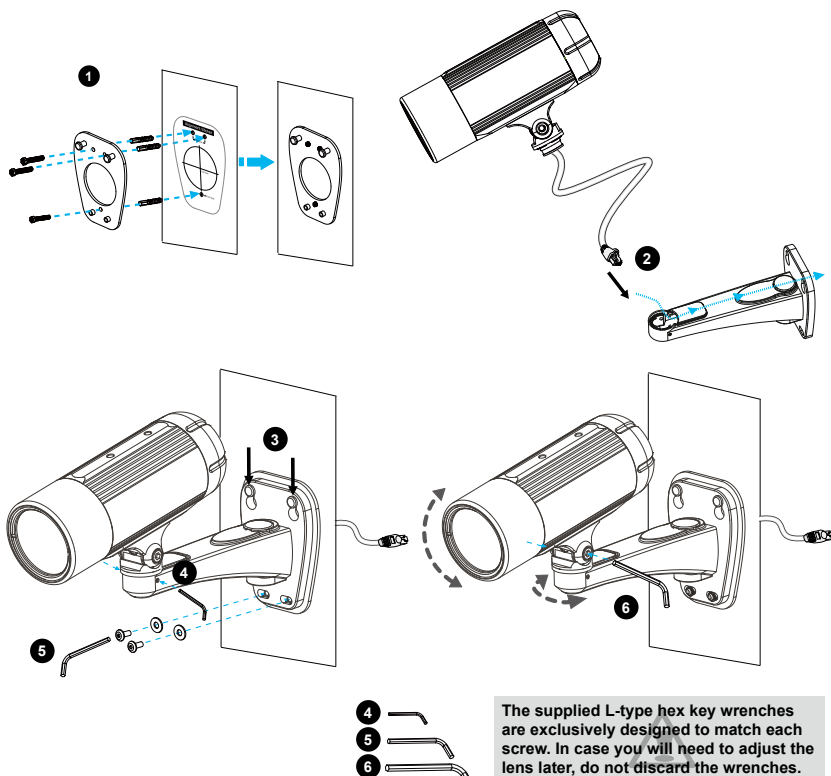
Physical Description



3

Hardware Installation

1. Attach the alignment sticker to the wall. Drill three holes into the wall. Then hammer the supplied plastic anchors into the holes and secure the plate with supplied screws.
2. Feed the cables through the front opening of the wall mount bracket.
3. Hang the wall mount bracket on the plate.
4. Fix the Network Camera on the wall mount bracket with two screws on both sides.
5. Secure the wall mount bracket with the supplied screws.
6. Adjust the angle of the wall mount bracket to aim at the shooting area.

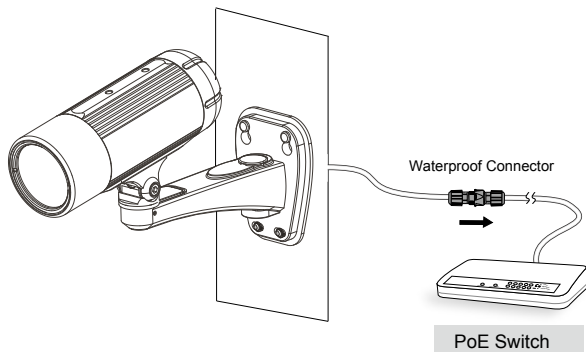


4

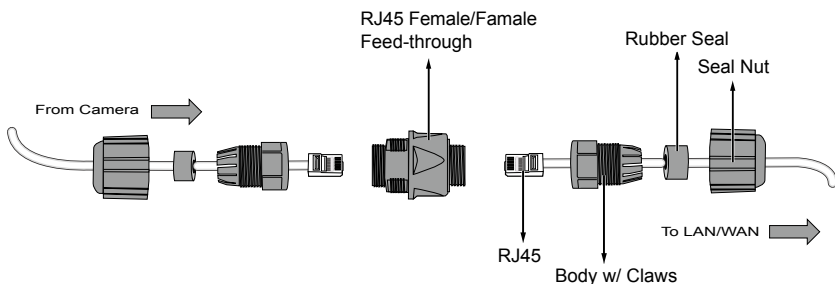
Network Deployment

Power over Ethernet (PoE)**Using a PoE-enabled switch**

The Network Camera is PoE-compliant, allowing transmission of power and data via a single Ethernet cable. Follow the below illustration to connect the Network Camera to a PoE-enabled switch via Ethernet cable.

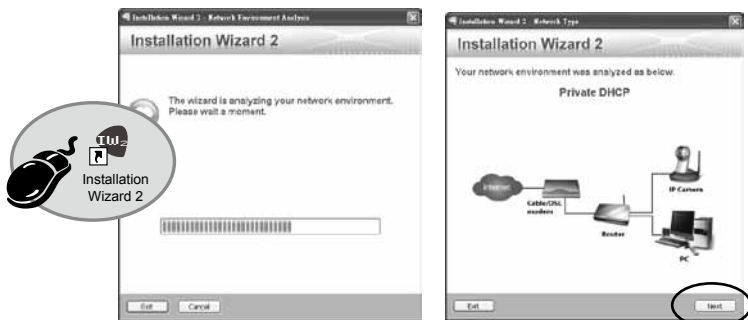
**Waterproof Connection**

Connect the camera's RJ45 connector through a waterproof cable gland, and to another Ethernet cable at the installation site. Wrap the rubber seal around Ethernet cables and squeeze it into the claws to prevent moisture. Make sure the components are tightly fastened.

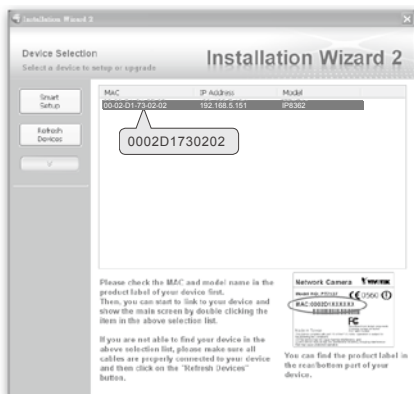


5 Assigning an IP Address

1. Install "Installation Wizard 2" from the Software Utility directory on the software CD.
2. The program will conduct an analysis of your network environment. After your network is analyzed, please click on the "Next" button to continue the program.



3. The program will search for VIVOTEK Video Receivers, Video Servers, and Network Cameras on the same LAN.
4. After searching, the main installer window will pop up. Click on the MAC that matches the one on the product label to connect to the Network Camera via Internet Explorer.



6

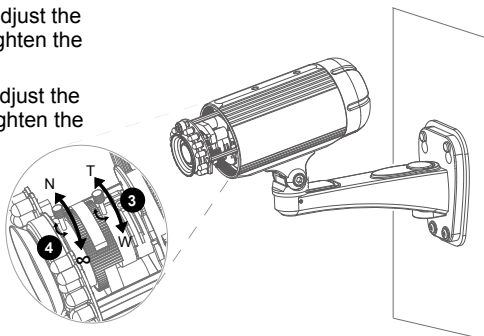
Ready to Use

1. Access the Network Camera from the LAN.
2. Retrieve live video through a web browser or recording software.



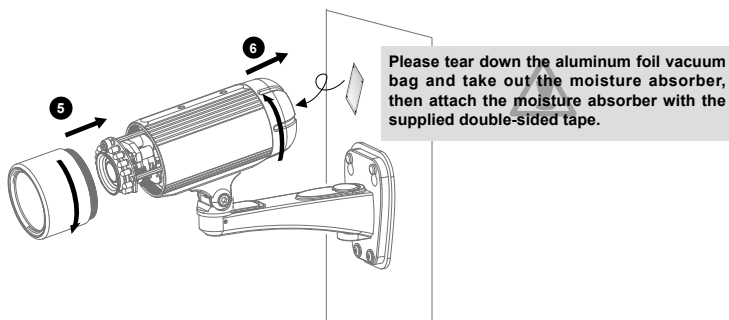
For further setup, please refer to the user's manual on the software CD.

3. Unscrew the zoom controller to adjust the zoom factor. Upon completion, tighten the zoom controller.
4. Unscrew the focus controller to adjust the focus range. Upon completion, tighten the focus controller.



5. Tighten the lens cover.

6. Replace the moisture absorber with a new one if you open the back cover during the installation procedure.



Note

If you want to use the supplied sun shield for outdoor environments, please follow the steps below to install:

1. Tighten the supplied two screws.

2. Attach the supplied sun shield to the Network Camera and slide it to the desired position.

3. Fix the sun shield with the supplied two screws.

