

VC8201

Split-type Camera System



5MP Fisheye • 1MP WDR Pro • 360° Surround View • 3DNR • Recessed Mount

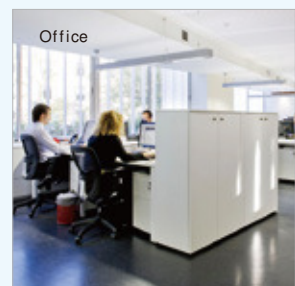
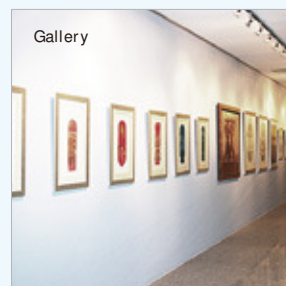
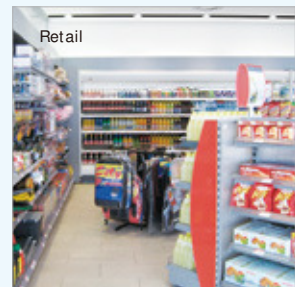
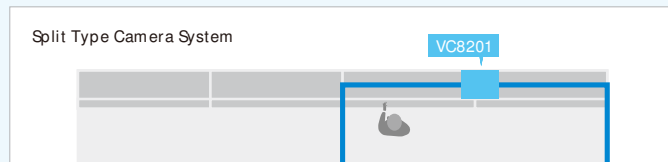
VIVOTEK VC8201 is a split-type camera system, which the camera unit and the video core are separated. With the separated design, it enables the camera unit to be much smaller, making installation easier as well as blending in decoration easily. In addition, the VC8201 can connect up to two 5-Megapixel camera units with 8-meter long cables, dramatically saving installation effort.

The camera units CU8131 and CU8171 are designed as recessed dome type, in order to fit in the decoration. The CU8131 is equipped with a 1MP sensor and features WDR Pro technology, allowing the camera to capture clear images with high-contrast scenes. The CU8171 is built with a 5MP sensor and fisheye lens to provide a 360° surround view without blind spots. The VC8201 can support different combinations of two camera units, making the installation more flexible.

Incorporating a number of advanced features of VIVOTEK cameras, including 3DNR, tamper detection, 802.3af compliant PoE, SD/SDHC/SDXC card slot, and VIVOTEK's 32-channel recording software, the VC8201 is the best solution of indoor video surveillance.

Key Features

- Supports Up to 2 Camera Units
- 2 Camera Options: 1MP WDR or 5MP Fisheye Camera
- Recessed Mount Camera Units
- Built-in Microphone on Camera Units
- Maximum 8 Meters Cable Connection
- Real-time H.264 and M.JPEG Compression
- Built-in IEEE 802.3af Compliant PoE
- 3D Noise Reduction



Specifications-Video Core

Model	VC8201-M11 (with CU8131x2) VC8201-M13 (with CU8131+CU8171) VC8201-M33 (with CU8171x2)
System Information	
CPU	Multimedia SoC (System-on-Chip)
Flash	256 MB
RAM	512 MB
On-board Storage	SD/ SDHC/ SDXC Card Slot
Video	
Compression	H.264 & MJPEG
Video Source	Up to 2 VIVOTEK camera units
Maximum Streams	3 simultaneous streams per camera unit
Video Streaming	Adjustable resolution, quality and bitrate Configurable video cropping for bandwidth saving
Image Settings	Adjustable image size, quality and bit rate Time stamp, text overlay, flip & mirror Configurable brightness, contrast, saturation, sharpness, white balance, exposure control, gain, backlight compensation, privacy masks Scheduled profile settings, 3D Noise Reduction
Audio	
Audio Capability	Audio input
Compression	GSM-AMR, G.711
Interface	From camera unit
Network	
Users	Live viewing for up to 10 clients
Protocols	IPv4, IPv6, TCP/IP, HTTP, HTTPS, UPnP, RTSP, RTP, RTCP, IGMP, SMTP, FTP, DHCP, NTP, DNS, DDNS, PPPoE, CoS, QoS, SNMP, 802.1X
Interface	10Base-T/ 100 BaseTX Ethernet (RJ45)
ONVIF	Supported, specification available at www.onvif.org
Intelligent Video	
Video Motion Detection	Five-window video motion detection

Alarm and Event	
Alarm Triggers	Video motion detection, manual trigger, digital input, periodical trigger, system boot, recording notification, camera tampering detection
Alarm Events	Event notification using digital output, HTTP, SMTP, FTP and NAS server File upload via HTTP, SMTP, FTP and NAS server
General	
Connectors	RJ45 connector for Network/ PoE connection RJ12 connector for camera unit connection *2 DC 12V power input Digital input *2 Digital output *2
LED Indicator	System power and status indicator
Power Input	DC 12V IEEE 802.3af PoE
Power Consumption	Max. 9.3 W (DC 12V) Max. 10.8 W (PoE)
Dimensions	145 mm (W) x 105 mm (D) x 32 mm (H)
Weight	Net: 360 g
Safety Certifications	CE, LVD, FCC Class B, VCCI, C-Tick
Operating Temperature	Starting Temperature: 0 °C ~ 50 °C (32 °F ~ 122 °F) Working Temperature: -10 °C ~ 50 °C (14 °F ~ 122 °F)
Warranty	24 months
System Requirements	
Operating System	Microsoft Windows 7/ Vista/ XP 2000
Web Browser	Mozilla Firefox 7~10 (streaming only) Internet Explorer 7.x or 8.x
Other Players	VLC: 1.1.11 or above QuickTime: 7 or above
Included Accessories	
CD	User's manual, quick installation guide, Installation Wizard 2, ST7501 32-channel recording software
Others	Quick installation guide, warranty card, installation kit, 5-meter connection cable x 2
Optional Accessories	8 meters connection cable

Specifications-Camera Unit

Model	CU8131
Image Sensor	1/3" Progressive CMOS
Maximum Resolution	30 fps @ 1280x800
Focal Length	f = 3.6 mm
Aperture	F1.8
Field of View	86° (Horizontal) 51° (Vertical) 103° (Diagonal)
Shutter Time	1/5 sec. to 1/32,000 sec.
WDR Technology	WDR Pro
Minimum Illumination	1.05 Lux @ F1.8, 50 IRE (Color)
Tilt Range	70°
Pan/tilt/zoom Functionalities	ePTZ: 48x digital zoom (4x on IE plug-in, 12x built-in)
S/N Ratio	Above 53 dB
Dynamic Range	110 dB
Audio Capability	Built-in microphone
Dimensions	Ø: 60 mm x 93 mm
Weight	Net: 58 g
Operating Temperature	Starting Temperature: 0 °C ~ 40 °C (32 °F ~ 104 °F) Working Temperature: -10 °C ~ 40 °C (14 °F ~ 104 °F)

Model	CU8171
Image Sensor	1/2.5" Progressive CMOS in 2560x1920
Maximum Resolution	15 fps @ 1696x1696
Focal Length	f = 1.27 mm
Aperture	F2.0
Field of View	180° (Horizontal) 180° (Vertical) 180° (Diagonal)
Shutter Time	1/5 sec. to 1/32,000 sec.
WDR Technology	WDR Enhanced
Minimum Illumination	0.66 Lux @ F2.0, 50 IRE (Color)
Tilt Range	-
Pan/tilt/zoom Functionalities	ePTZ: 12x digital zoom
S/N Ratio	Above 62 dB
Dynamic Range	57 dB
Audio Capability	Built-in microphone
Dimensions	Ø: 60 mm x 81 mm
Weight	Net: 51 g
Operating Temperature	Starting Temperature: 0 °C ~ 40 °C (32 °F ~ 104 °F) Working Temperature: -10 °C ~ 40 °C (14 °F ~ 104 °F)

Dimensions

<p>VC8201</p>	<p>CU8131</p>	<p>CU8171</p>
---------------	---------------	---------------

All specifications are subject to change without notice. Copyright © VIVOTEK INC. All rights reserved.

