

VC8201

Split-type Camera System



5MP Fisheye • 1MP WDR Pro • 360° Surround View • 3DNR • Recessed Mount

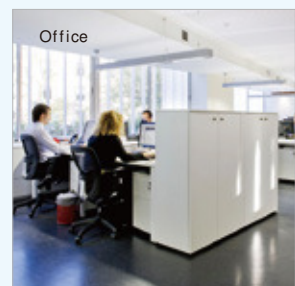
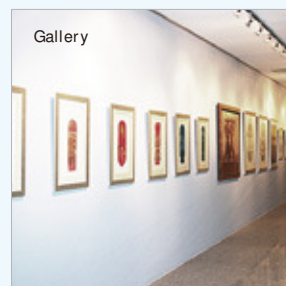
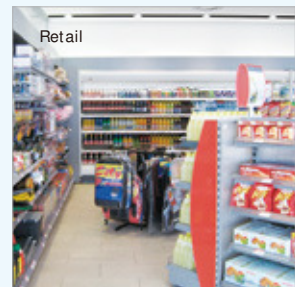
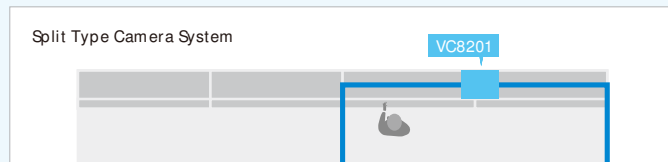
VIVOTEK VC8201 is a split-type camera system, which the camera unit and the video core are separated. With the separated design, it enables the camera unit to be much smaller, making installation easier as well as blending in decoration easily. In addition, the VC8201 can connect up to two 5-Megapixel camera units with 8-meter long cables, dramatically saving installation effort.

The camera units CU8131 and CU8171 are designed as recessed dome type, in order to fit in the decoration. The CU8131 is equipped with a 1MP sensor and features WDR Pro technology, allowing the camera to capture clear images with high-contrast scenes. The CU8171 is built with a 5MP sensor and fisheye lens to provide a 360° surround view without blind spots. The VC8201 can support different combinations of two camera units, making the installation more flexible.

Incorporating a number of advanced features of VIVOTEK cameras, including 3DNR, tamper detection, 802.3af compliant PoE, SD/SDHC/SDXC card slot, and VIVOTEK's 32-channel recording software, the VC8201 is the best solution of indoor video surveillance.

Key Features

- Supports Up to 2 Camera Units
- 2 Camera Options: 1MP WDR or 5MP Fisheye Camera
- Recessed Mount Camera Units
- Built-in Microphone on Camera Units
- Maximum 8 Meters Cable Connection
- Real-time H.264 and M.JPEG Compression
- Built-in IEEE 802.3af Compliant PoE
- 3D Noise Reduction



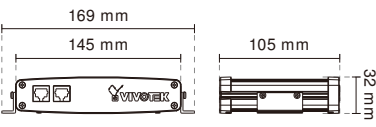
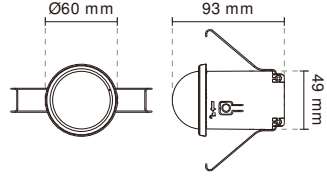
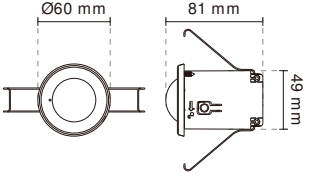
Specifications-Video Core

Model	VC8201-M11 (with CU8131x2) VC8201-M13 (with CU8131+CU8171) VC8201-M33 (with CU8171x2)	Alarm and Event	
System Information		Alarm Triggers	Video motion detection, manual trigger, digital input, periodical trigger, system boot, recording notification, camera tampering detection
CPU	Multimedia SoC (System-on-Chip)	Alarm Events	Event notification using digital output, HTTP, SMTP, FTP and NAS server File upload via HTTP, SMTP, FTP and NAS server
Flash	256 MB	General	
RAM	512 MB	Connectors	RJ45 connector for Network/PoE connection RJ12 connector for camera unit connection *2 DC 12V power input Digital input *2 Digital output *2
On-board Storage	SD/SDHC/SDXC Card Slot	LED Indicator	System power and status indicator
Video		Power Input	DC 12V IEEE 802.3af PoE
Compression	H.264 & MJPEG	Power Consumption	Max. 9.3 W (DC 12V) Max. 10.8 W (PoE)
Video Source	Up to 2 VIVOTEK camera units	Dimensions	145 mm (W) x 105 mm (D) x 32 mm (H)
Maximum Streams	3 simultaneous streams per camera unit	Weight	Net: 360 g
Video Streaming	Adjustable resolution, quality and bitrate Configurable video cropping for bandwidth saving	Safety Certifications	CE, LVD, FCC Class B, VCCI, C-Tick
Image Settings	Adjustable image size, quality and bit rate Time stamp, text overlay, flip & mirror Configurable brightness, contrast, saturation, sharpness, white balance, exposure control, gain, backlight compensation, privacy masks Scheduled profile settings, 3D Noise Reduction	Operating Temperature	Starting Temperature: 0 °C ~ 50 °C (32 °F ~ 122 °F) Working Temperature: -10 °C ~ 50 °C (14 °F ~ 122 °F)
Audio		Warranty	24 months
Audio Capability	Audio input	System Requirements	
Compression	GSM-AMR, G.711	Operating System	Microsoft Windows 7/ Vista/ XP 2000
Interface	From camera unit	Web Browser	Mozilla Firefox 7~10 (streaming only) Internet Explorer 7.x or 8.x
Network		Other Players	VLC: 1.1.11 or above QuickTime: 7 or above
Users	Live viewing for up to 10 clients	Included Accessories	
Protocols	IPv4, IPv6, TCP/IP, HTTP, HTTPS, UPnP, RTSP, RTP, RTCP, IGMP, SMTP, FTP, DHCP, NTP, DNS, DDNS, PPPoE, CoS, QoS, SNMP, 802.1X	CD	User's manual, quick installation guide, Installation Wizard 2, ST7501 32-channel recording software
Interface	10Base-T/100 BaseTX Ethernet (RJ45)	Others	Quick installation guide, warranty card, installation kit, 5-meter connection cable x 2
ONVIF	Supported, specification available at www.onvif.org	Optional Accessories	8 meters connection cable
Intelligent Video			
Video Motion Detection	Five-window video motion detection		

Specifications-Camera Unit

Model	CU8131	Model	CU8171
Image Sensor	1/3" Progressive CMOS	Image Sensor	1/2.5" Progressive CMOS in 2560x1920
Maximum Resolution	30 fps @ 1280x800	Maximum Resolution	15 fps @ 1696x1696
Focal Length	f = 3.6 mm	Focal Length	f = 1.27 mm
Aperture	F1.8	Aperture	F2.0
Field of View	86° (Horizontal) 51° (Vertical) 103° (Diagonal)	Field of View	180° (Horizontal) 180° (Vertical) 180° (Diagonal)
Shutter Time	1/5 sec. to 1/32,000 sec.	Shutter Time	1/5 sec. to 1/32,000 sec.
WDR Technology	WDR Pro	WDR Technology	WDR Enhanced
Minimum Illumination	1.05 Lux @ F1.8, 50 IRE (Color)	Minimum Illumination	0.66 Lux @ F2.0, 50 IRE (Color)
Tilt Range	70°	Tilt Range	-
Pan/tilt/zoom Functionalities	ePTZ: 48x digital zoom (4x on IE plug-in, 12x built-in)	Pan/tilt/zoom Functionalities	ePTZ: 12x digital zoom
S/N Ratio	Above 53 dB	S/N Ratio	Above 62 dB
Dynamic Range	110 dB	Dynamic Range	57 dB
Audio Capability	Built-in microphone	Audio Capability	Built-in microphone
Dimensions	Ø: 60 mm x 93 mm	Dimensions	Ø: 60 mm x 81 mm
Weight	Net: 58 g	Weight	Net: 51 g
Operating Temperature	Starting Temperature: 0 °C ~ 40 °C (32 °F ~ 104 °F) Working Temperature: -10 °C ~ 40 °C (14 °F ~ 104 °F)	Operating Temperature	Starting Temperature: 0 °C ~ 40 °C (32 °F ~ 104 °F) Working Temperature: -10 °C ~ 40 °C (14 °F ~ 104 °F)

Dimensions

<p>VC8201</p> 	<p>CU8131</p> 	<p>CU8171</p> 
---	---	---

All specifications are subject to change without notice. Copyright © VIVOTEK INC. All rights reserved.

