

2MP Mini Bullet Camera

Quick Installation Guide



Quick Installation Guide

Please follow the installation steps below to set up your 2MP Mini Bullet IP Camera.

Check the package contents against the list below. ***See P.1***

Physical overview. ***See P.2***

Install the hardware and connect all cables. ***See P.2***

Microsoft OS: Use the software CD to install Camera Installation Tool. ***See P.3***

Access the IP Camera using Camera Installation Tool. ***See P.4***

Mac OS using Safari Browser. ***See P.6***

Lighting environment setting. ***See P.6***

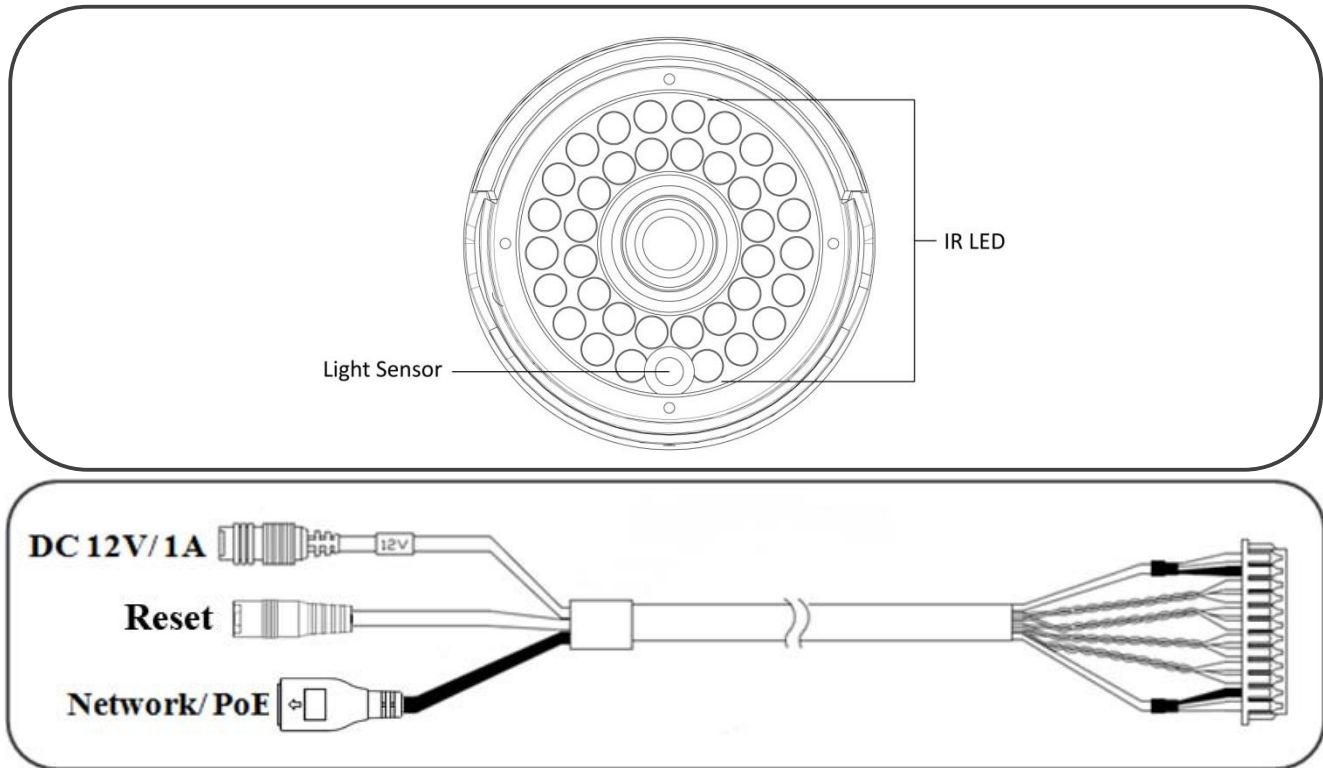
Change the Web Interface into your preferred language. ***See P.7***

Application of IP Camera. ***See P.7***

Package Contents

Camera	2MP Mini Bullet IP Camera
Quick Installation Guide	Brief product information and quick installation
Software CD	IP Surveillance Software Camera Installation Tool User Manuals Camera Language Packs
Accessory	Screws and anchors for wall and ceiling mounting RJ45 waterproof connector

Physical Overview

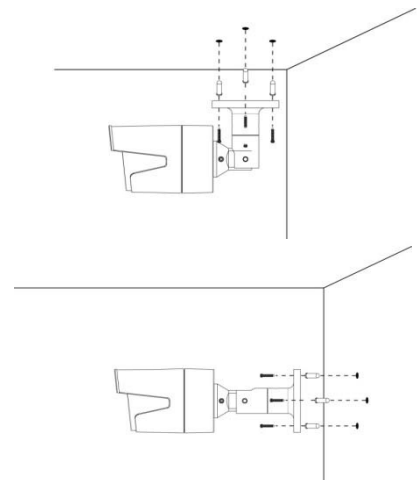


Reset: When the device is powered, press the Reset Button to reboot the device, or hold the Reset Button for 15 seconds to the settings back to factory default.

Install the hardware and connect all cables

a. Wall mounting and Ceiling mounting

1. Use the 3 supplied screws to fix the base plate to a flat surface.
2. Loosen the screws on the bracket to aim the shooting area.
3. Tighten the screws at the joints of the bracket.



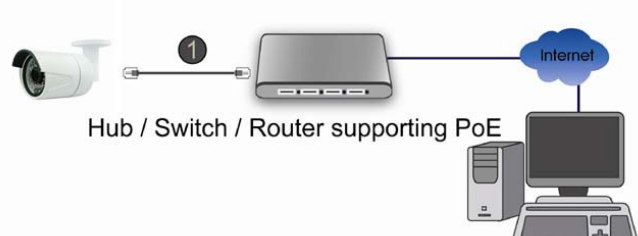
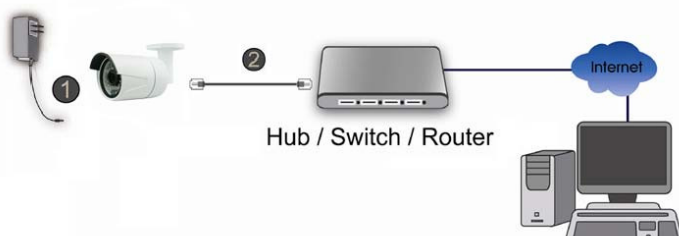
b. Connet all cables

b1. Without Power over Ethernet (PoE) connection

1. Connect the 12V power adaptor to the IP Camera.
2. Using a standard RJ-45 network cable, connect the IP Camera to a normal Hub/ Switch/ Router.

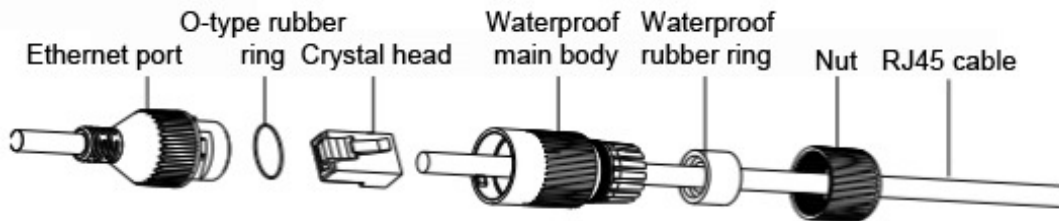
b2. Power over Ethernet (PoE)

Using a standard RJ-45 network cable, connect the IP Camera to a PoE-enabled Hub/ Switch/ Router.



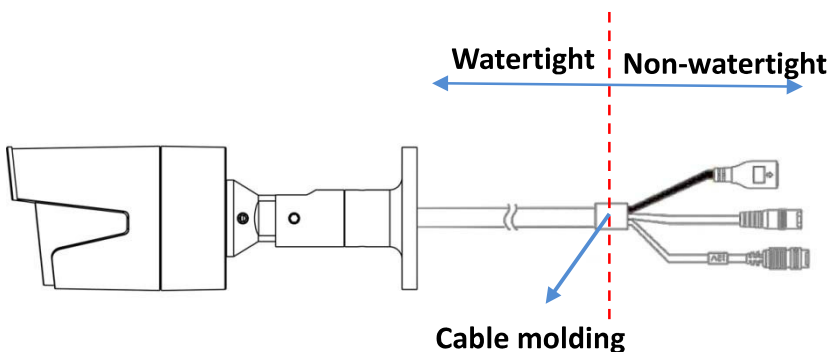
c. RJ45 waterproof connector

1. Cut the RJ45 crystal head of network cable.
2. Feed the network cable through the fastening nut, waterproof rubber ring, and main body.
3. Re-connect the RJ45 crystal head with network cable and insert it into ethernet port and fasten main body clockwise



Note : IP Camera watertight ambit

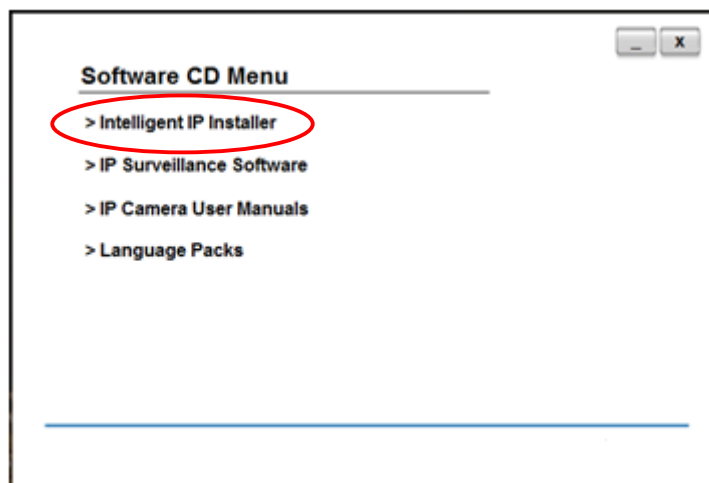
2MP mini bullet IP camera uses IP-66 rated weatherproof housing. The image as below shows you the ambit of watertight and non-watertight, please make sure the cable with plug on the right side of cable molding should be avoided from water.



Microsoft OS: Use the software CD to install Intelligent IP Installer

Power on your PC and insert the CD-ROM. The setup page will show up automatically. Please follow these steps to install the firmware.

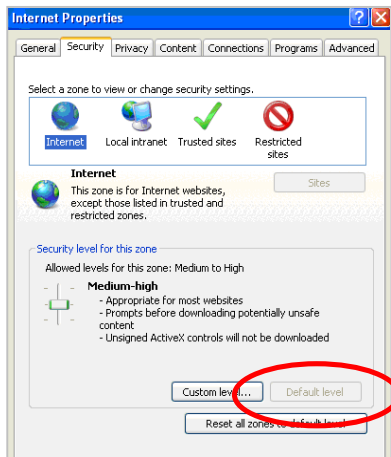
Selet “**Intelligent IP Installer**” and follow the installation process to complete the installation.



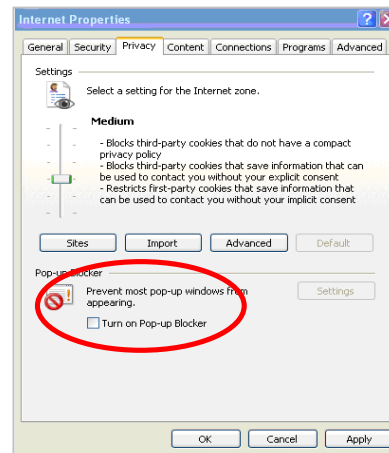
Access the IP Camera using Intelligent IP Installer

1. Please check two settings before using Intelligent IP Installer.

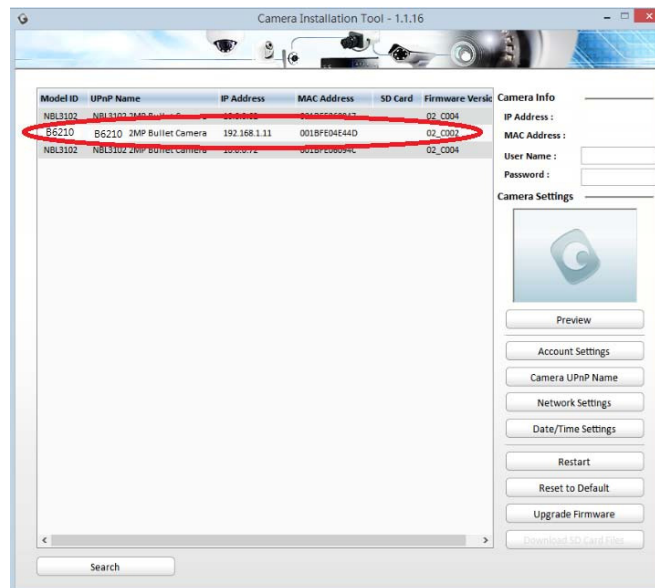
a. Browser's Internet Properties ☐ Security ☐ Default Level



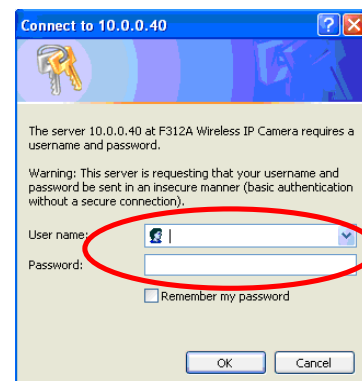
b. Browser's Internet Properties ☐ Privacy ☐ Uncheck Pop-up Blocker



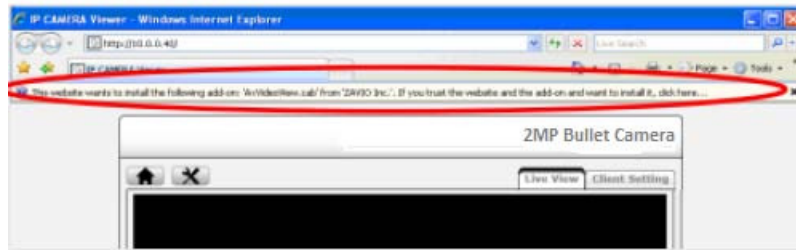
2. Click the Intelligent IP Installer Icon on your desktop. The main page will show up listing all active camera and video server devices. Select the relevant IP camera from the list and click **Link to IE**.



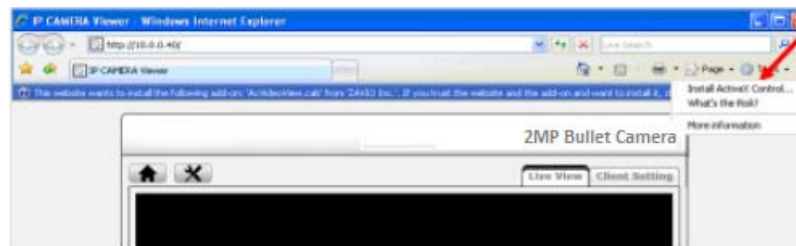
3. Enter your Username and Password to login to the IP Camera.
(Default is admin / admin)



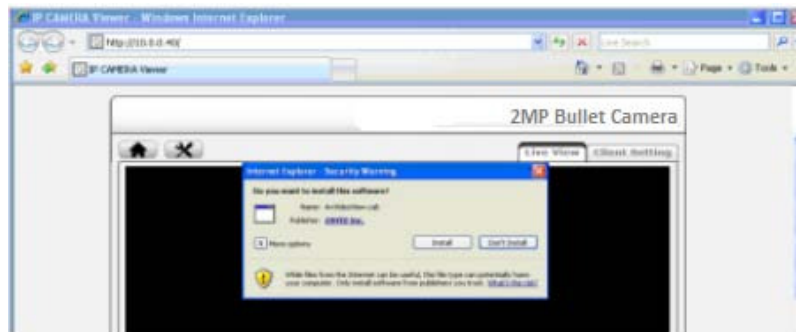
4. When accessing the IP Camera for the first time, a yellow information bar appears below the address bar: **This website wants to install the following add-on: 'AxvideoView.cab'.**



5. Click the information bar, and select **Install ActiveX control.**



6. Click **Install.**

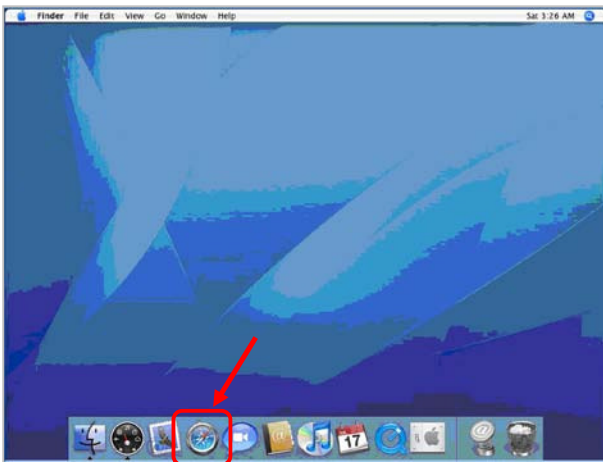


7. Live video displays in the centre of your web browser.

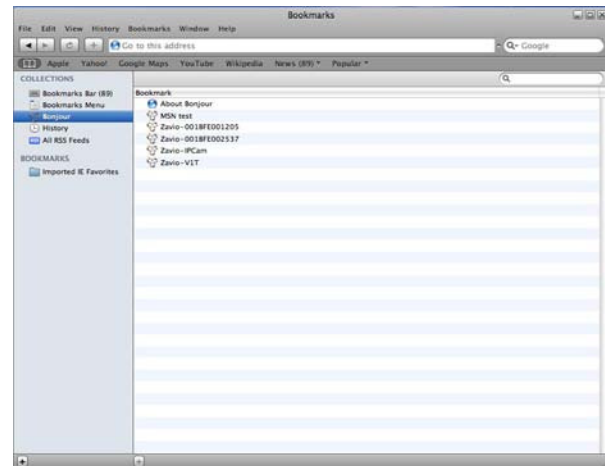


Mac OS using Safari Browser

1. Select **Safari** icon



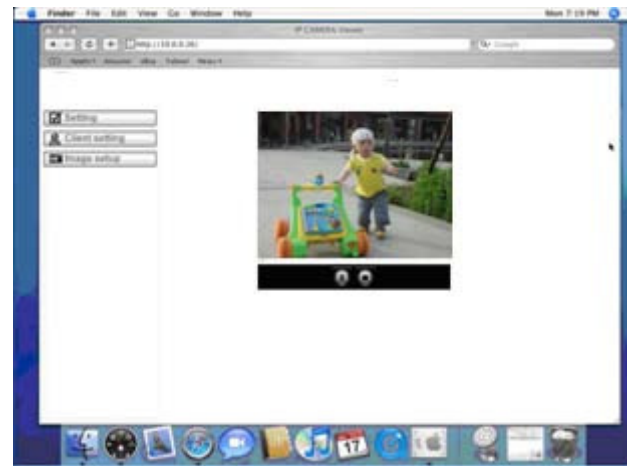
2. Click **Bonjour** function and select the camera you wish to access.



3. Enter name and password to login to the IP camera. (**Default is admin / admin**)



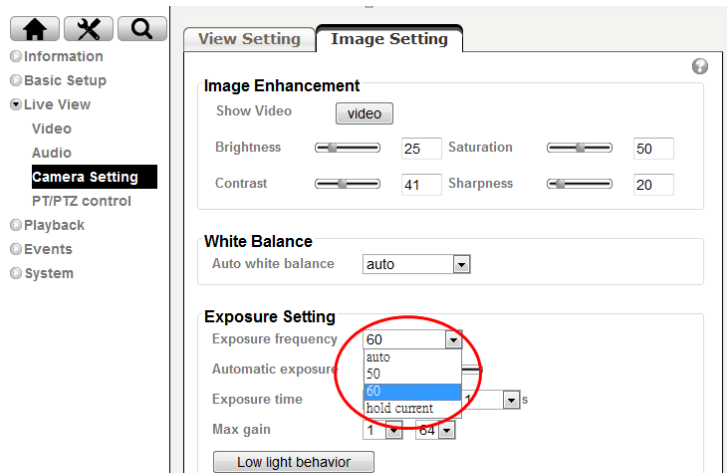
4. The monitor image will be displayed in your browser.



Lighting environment setting

The default setting of lighting environment is **Auto**. However, you may also select 50 or 60 Hz upon the lighting environment of your country.

Go to “Setting > Live View > Camera Setting > Image Setting”, select the environment setting you wish.

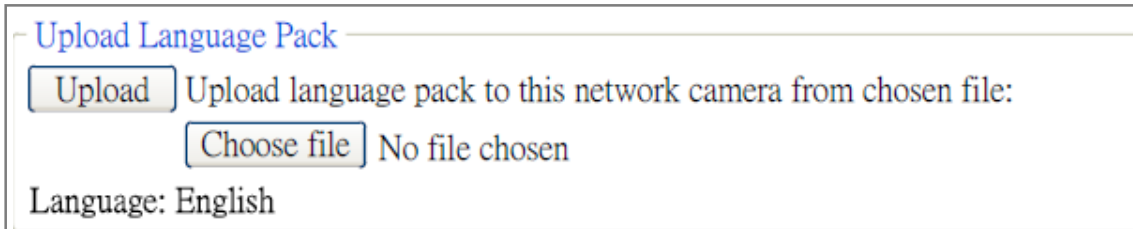


Change the Web Interface into your preferred language

Use the settings screen to set the language of the Web Interface.

Go to "Setting > System > Maintenance".

1. Insert Software CD into your CD-ROM.
2. Browse and select the preferred language from language pack in the Software CD and then click OK.
3. The web interface will change into your preferred language.



Application of IP Camera

