

ZAVIO B7320 3MP WDR Outdoor Bullet IP Camera



- 3 megapixel CMOS sensor
- True WDR up to 100dB
- 4 high performance IR LEDs and up to 30m distance
- Built-in heater and fan
- IP66 weatherproof housing
- Varifocal



The 3 megapixel B7320 bullet IP camera is designed to withstand harsh outdoor and tough environment.

The B7320 can capture video at resolutions of up to 1920x1080 (maximum 2048x1536) at frame rates up to 30 fps. With true WDR (wide dynamic range) capability ensures that no part of the image is too bright or too dark, can provide clear image quality even at backlight conditions, making the B7320 ideal for high-contrast environments.

The IP66-rated housing with -40°C to 60°C temperature protection, it makes the camera invulnerable to harsh rain storms and scorching heat. B7320 also outfitted with IR LED illuminators and gives a viewing range of 30m to achieve excellent day & night functionality.

Besides, the included ZAVIO CamGrab2.0 is the most professional NVR software for free bundled can support up to 64 IP cameras.

Related models

Model Name	B7210	B7320	B7510
Feature	Outdoor IP66	Outdoor IP66	Outdoor IP66
	Full HD 1080p	3MP WDR	5MP
	Varifocal	Varifocal	Varifocal
	ICR IR 30m	ICR IR 30m	ICR IR 30m
	Built-in fan & heater	Built-in fan & heater	Built-in fan & heater

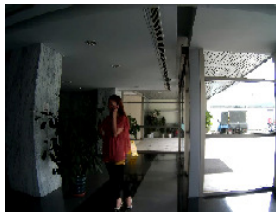
Features

- 3 megapixel progressive scan CMOS sensor
- 100dB true dynamic range
- H.264 and Motion JPEG compression
- 20 fps in 2048 x 1536, 30 fps in 1920 x 1080
- Day & night functionality with automatic removable IR-cut filter
- 4 high performance IR LEDs and up to 30m distance
- 3 x 9mm, F1.3 varifocal, auto-iris lens
- Analog video output through RCA connector
- Built-in MicroSD / SDHC card slot
- Tampering detection
- RTC with built-in battery
- Built-in heater and fan, enabling camera in severe environment (-40 ~ 60°C)
- Power over Ethernet (IEEE 802.3af/at)
- 2x alarm input, 2x alarm output
- IP66 rated weatherproof housing
- SSL v3 advanced HTTPS encryption
- Supports Samba network storage
- Multi-lingual user interface
- ONVIF 2.2 and Profile S compliant
- Free 64-channel ZAVIO Cam Grab v2.0 NVR software

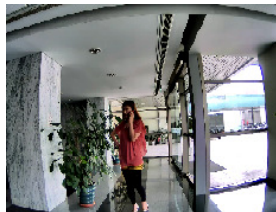
WDR (Wide Dynamic Range)

Dynamic range is the ratio of the maximum signal output of the sensor to the smallest signal output of the sensor. In other words, dynamic range is the ratio of the brightest portion (maximum output) of the image to the darkest portion (smallest output) of the image.

In a scene with extremely bright and dark areas or in backlight environment such as entryway, a typical camera would produce an image where objects in the dark areas would hardly be visible. WDR (Wide dynamic range) can solve this by applying techniques such as using different exposures for different objects in a scene to enable objects in both bright and dark areas to be visible. WDR IP cameras are usually recommended for situations where light enters a premise from various angles such as a multi-window room.



Conventional camera without wide dynamic range



Camera with wide dynamic range applied

Application



1. Banking
2. High Latitude
3. Traffic

ZAVIO IP Surveillance Solutions

• Free Plug & Play Cloud Solution

You can watch Live Video on your computer or the mobile app on your iOS / Android device. Setup is as easy as 1-2-3, and it's completely free!

Step 1. Now, go to sat.qlync.com

Step 2. Create your account

Step 3. Add cameras to your account

Please go to zavio.com for a list of Cloud Solution support camera models



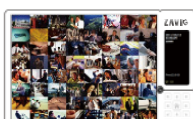
• NVR Partners

ZAVIO IP Cameras are supported by a wide range of 3rd party NVR software and devices.

Please go to zavio.com for a list of our partners.

• Free 64ch NVR Software

The most professional NVR software you can get for free!



• 4ch / 8ch Standalone NVR

The easiest way to view, record and playback up to 8 Full HD cameras all in real-time.



• ONVIF

ONVIF 2.2 & Profile S compliant



Technical Specifications

Camera	
Models	B7320.3 megapixel WDR day/night outdoor bullet
Image sensor	1/3" WDR CMOS sensor
Lens	F1.3, 3.9mm, vari-focal, auto-iris
Angle of view	30°~87°horizontal; 22°~64°vertical
Digital zoom	10x digital
Min illumination	0.05 lux @ F1.3 (color) 0.001 lux @ F1.3 (B/W) 0 lux @ F1.3 (IR LED on)
IR working distance	30m effective range
IR LEDs	High performance IR LED x4 (850nm)
Day/Night function	Mechanical IR cut filter
Shutter time	1/2~1/10,000 sec.
Dynamic Range	Up to 100dB

Video	
Video compression	Motion JPEG H.264 baseline/ main/ high profile
Resolutions	Motion JPEG: 8 resolutions from 2048 x 1536 to 320 x 240 via API, 8 selections via configuration web page H.264 8 resolutions from 2048 x 1536 to 320 x 240 via API, 8 selections via configuration web page
Frame rate	Motion JPEG: up to 20 fps at 2048 x 1536 30 fps at 1920 x 1080 H.264: up to 20 fps at 2048 x 1536 30 fps at 1920 x 1080
Video streaming	Simultaneous Motion JPEG, H.264 (multiple streaming) Controllable frame rate and bandwidth
Image settings	Rotation: mirror, flip, mirror flip Wide Dynamic Range (100dB) Brightness, contrast, saturation, sharpness Overlay capabilities: time, date, text and privacy image

Audio	
Audio streaming	Two-way (full duplex) Line in & out
Audio compression	G.711 law, a law

Network	
Security	Multiple user access levels with password protection, HTTPS encryption
Supported protocols	Bonjour, TCP/IP, DHCP, DNS, DynDNS, PPPoE, ARP, ICMP, FTP, SMTP, INTP, UPnP, RTSP, RTP, RTCP, HTTP, HTTPS, SSL, TCP, UDP, ISMA
Users	10 simultaneous users Unlimited number of users using multicast

Alarm and Event Support	
Alarm and event management	Input: alarm buffer, motion detection, tampering detection Output: network storage, FTP, SMTP, pre-and post alarm buffer

System	
Connectors	RJ45 for Ethernet 10/100 Base-T (with PoE) 2 pin terminal blocks for DC power Terminal blocks for 2 alarm input, 2 alarm output Audio line input, Audio line output Reset push switch PCA connector for analog video output
LED Indicator	Power status indicator Network link indicator MicroSD/SDHC card status indicator

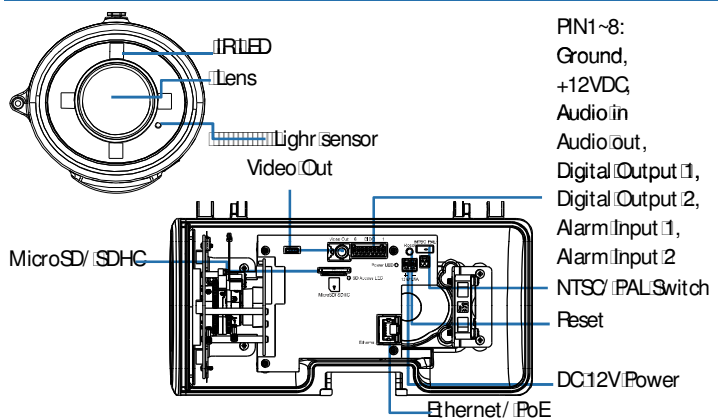
General	
Casing	Aluminum casing
Housing	Weatherproof IP66-rated

AC power requirement & consumption	PoE power requirement 12V/DC, 1.5A; power consumption: max. 16.2W Note: while IR on, heater or fan would be activated automatically
PoE power requirement & consumption	Power requirement: Power over Ethernet IEEE 802.3af Note: while IR on, heater and fan will be disabled Power consumption: max. 11.1W Power over Ethernet IEEE 802.3at Note: while IR on, heater or fan would be activated automatically Power consumption: max. 16.2W
Heater & fan	Built-in and auto activation Note: Heater will be activated while the B7320 inner temperature drops under 5°C and fan over 50°C
Operating conditions	-40°C~60°C (-40°F~140°F)
Installation, management, and maintenance	ZAVIO camera management tool on CD and web-based configuration. Configuration of backup and restore, firmware upgrades over HTTP, firmware available at www.zavio.com
Minimum web browsing requirement	Pentium 4 2.8GHz (or equivalent AMD) 256MB RAM graphic cards (or equivalent on-board graphic cards) 1GB RAM Windows XP, Vista or Windows 7 Mac OS Leopard 10.5 or later
Dimensions (HxWxD)	360 x 125 x 250mm (14.2" x 4.9" x 9.8")
Weight	1830.8g (4.05lb) excl. power supply
Included accessories	Quick installation guide, CD (IP surveillance software, IP installer, user manual, and language packs), mounting and connector kits Note: AC power supply not included
Certification	CE, FCC, RoHS

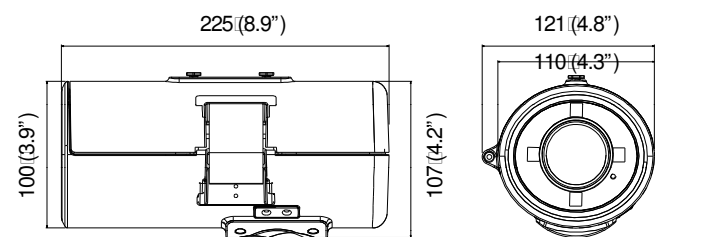
Integration

Video management software	ZAVIO CamGaba 2.0 IP System software, for viewing, recording and archiving up to 64 cameras See http://www.zavio.com/product.php?id=50 for more software application
---------------------------	--

Part Names and Functions



Dimensions



Unit: mm (inches)

