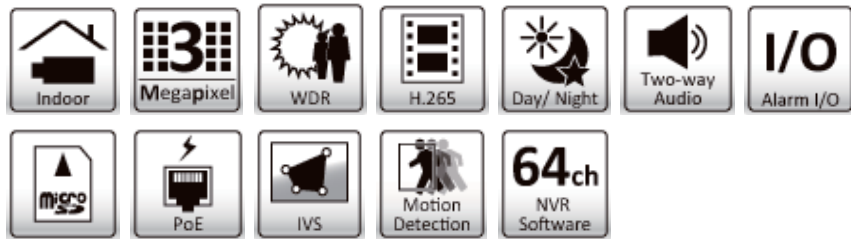


ZAVIO P4320 3MP Panoramic Fisheye IP Camera



- 180°/360° Fisheye Mini Dome
- H.265, 50% lower bitrate
- 30fps @ 2048 x 1520
- IVS
- Edge Storage



The P4320 is a compact, yet powerful fisheye dome camera featuring many cutting-edge technologies. The high resolution fisheye lens provides 360° surround view with image detail even at the normally weak edges; the backside illuminated 4-Megapixel image sensor ensures good low light sensitivity; our advanced fisheye dewarping algorithms keeps distortion lower than others while putting less computing loading on the server; and last but not least, video can be streamed in the ultra-efficient H.265 format, which has up to 50% lower bitrates and cuts your bandwidth and storage requirements in half. It also features a removable IR-cut filter, MicroSD/SDHC/SDXC edge storage, PoE, two-way audio and alarm input/output, making it an extremely versatile camera with maximum coverage.

Related models

Model Name	P4320	D4211	P6211
Feature	180°/360° Fisheye Mini Dome	IR Mini Dome	Pan/ Tilt IR Mini Dome
	3MP	Full HD 1080p	Full HD 1080p
	H.265	H.264	H.264
	WDR	-	-
	PoE	PoE	PoE
	-	IP66(optional)/ IK08	IP66(optional)/ IK08

Features

- 1/3" 4 Megapixel CMOS sensor
- H.265, H.264, and Motion JPEG compression
- 30fps @ 2048 x 1520
- 1.05mm, F2.0 fisheye lens
- WDR
- IVS (intelligent video surveillance)
- True day & night with automatic removable IR cut filter
- Two way audio and built in microphone
- 1 x alarm input, 1 x alarm output
- Edge storage
- RTC with built in battery
- SSLv3 advanced HTTPS encryption
- Supports Samba network storage
- Multi lingual user interface
- ONVIF 2.4 and Profile S compliant
- Free 64 channel ZAVIO CamGraba 2.0 NVR software

WDR

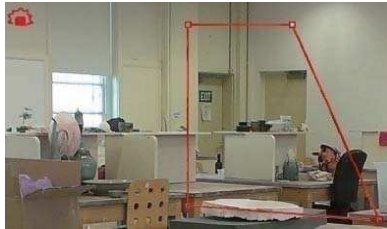


WDR off



WDR on

IVS Pro



Perimeter Detection



Tripwire Detection

Applications



- 1. Office
- 2. Public Area

IP Surveillance Solutions

Free 64ch NVR Software

The most professional NVR software you can get for free!

- Support up to 64 channels
- Up to 128 channels remote live view
- Remote playback 16 channels
- Multi site / multi server
- Transcoding (record high quality, transcode to different resolution / frame rate for remote client to save bandwidth)
- iOS / Android mobile client (multi channel live view / playback / PTZ & I/O control)
- E maps (up to 4 layers / unlimited number of maps / video preview)
- Dual monitor
- ePTZ
- Multi lingual user interface



ONVIF

All IP cameras are ONVIF 2.x & Profile S compliant, and continuously upgraded to comply with the latest versions



NVR Recorders

The most cost efficient way to professionally view, record and manage up to 32 Full HD cameras

- Up to 32 channels
- Up to 4 HDDs or 16TB of storage
- Up to 160Mbps recording throughput
- Free CMS up to 128 channels remote live view
- Free P2P service, no more router settings
- One click setup
- HDMI, VGA dual video output
- RAID 0, 1
- Supports 3rd party cameras
- Supports POS / Point of Sale



Technical Specifications

Camera

Model	P4320 3MP Panoramic Fisheye IP Camera
Image sensor	1/3" 4-megapixel CMOS sensor
Lens	F2.0, 1.05mm
Angle of view	180° horizontal 160° vertical
Min illumination	0.05 lux @ F2.0 (color) 0.001 lux @ F2.0 (B/W)
Day/Night function	Mechanical IR cut filter

Video

Video compression	Motion JPEG H.264 baseline/ main profile/ high profile H.265
Resolutions	Motion JPEG/ H.264/ H.265: 2 profiles from 1920 x 1080 to 320 x 240 2 profiles from 640 x 480 to 320 x 240
Frame rate	Motion JPEG/ H.264/ H.265: up to 30 fps at 2048 x 1520
Video streaming	Simultaneous Motion JPEG, H.264, H.265 Controllable frame rate and bandwidth Support unicast (Real Time Streaming Protocol)
Image settings	Rotation: mirror, flip, mirror flip WDR Brightness, contrast, saturation, sharpness Overlay capabilities: Time, date, text and privacy Image ROI Defog

Audio

Audio streaming	Two-way (full duplex)
Audio compression	G.711 μ law, a law, AMR
Audio input/output	Built-in microphone, line input and line output

Network

Security	Multiple user access levels with password protection, HTTPS encryption
Supported protocols	Bonjour, TCP/IP, DHCP, DNS, DynDNS, PPPoE, ARP, ICMP, FTP, SMTP, NTP, UPnP, RTSP, RTP, RTCP, HTTP, HTTPS, SSL, TCP, UDP
Users	10 simultaneous users

Alarm and Event Support

Alarm and event management	Input: alarm buffer, alarm input, motion detection Output: network storage, FTP, SMTP, HTTP event, alarm Pre- and post alarm buffer
IVS	Tampering detection, tripwire, perimeter

System

Connectors	RJ45 Ethernet 10/ 100 Base-T (PoE) Reset button 2pin terminal block for DC power 6pin cable for 1 alarm input, 1 output, 1 audio line in 1 audio line out
Local storage	MicroSD Card slot
LED Indicator	Power status indicator Network link indicator
Software integration	ONVIF 2.4 & Profile S
Video management software	Camera Installation Tool & Video Management Software-ZAVIO CamGraba 2.0 for viewing recording and archiving up to 64 cameras

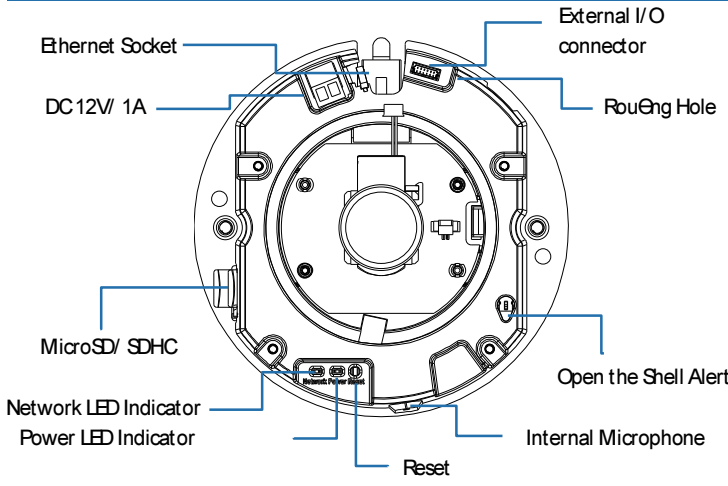
General

Casing	Aluminum casing
Power	DC 12V or PoE IEEE 802.3af class 1 Power consumption: Max 4.65W
Operating conditions	-10 ~ 50 °C (14 ~ 122 °F)
Installation, management, and maintenance	ZAVIO camera management tool on CD and web-based configuration. Configuration of backup and restore firmware upgrades over HTTP, firmware available at www.zavio.com
Minimum web browsing requirement	Pentium 4 2.8GHz (or equivalent AMD) 256MB RAM graphic cards (or equivalent on-board graphic cards) 1GRAM Window XP, Vista, or Windows 7 Mac OS Leopard 10.5 or later
Dimensions	ϕ 115 x 54mm (ϕ 4.53" x 2.13")
Weight	240g (0.53lb)
Included accessories	Quick installation guide, CD (Camera Installation Tool, Management Tool, User Manuals, Camera Language Packs) mounting and connector kits
Certification	CE, FCC

Integration

Video management	ZAVIO CamGraba IP System software, for viewing, and archiving up to 64 cameras See http://www.zavio.com/software/downloads.php for more software application
------------------	---

Part Names and Functions



Dimensions

