

**P5111/ P5116**  
**» P5210**

**Quick Installation Guide**

---

# Zavio P5111/ P5116/ P5210 Quick Installation Guide

## Installation Steps

Please follow the installation steps below to set up your P5111 / P5116/ P5210 Day/Night Pan/Tilt IP Camera.

Check the package contents against the list below. **See P.1**

Physical Overview. **See P.2**

Install the hardware and connect all cables. **See P.3**

Microsoft OS: Use the software CD to install Intelligent IP Installer. **See P.4**

Access the IP Camera using Intelligent IP Installer. **See P.4**

Mac OS Using Safari Browser. **See P.6**

Change lighting environment setting. **See P.6**

Change the Web Interface into your preferred language. **See P.7**

Wireless Setting.( P5116 Model ). **See P.7**

Application of IP Camera **See P.8**

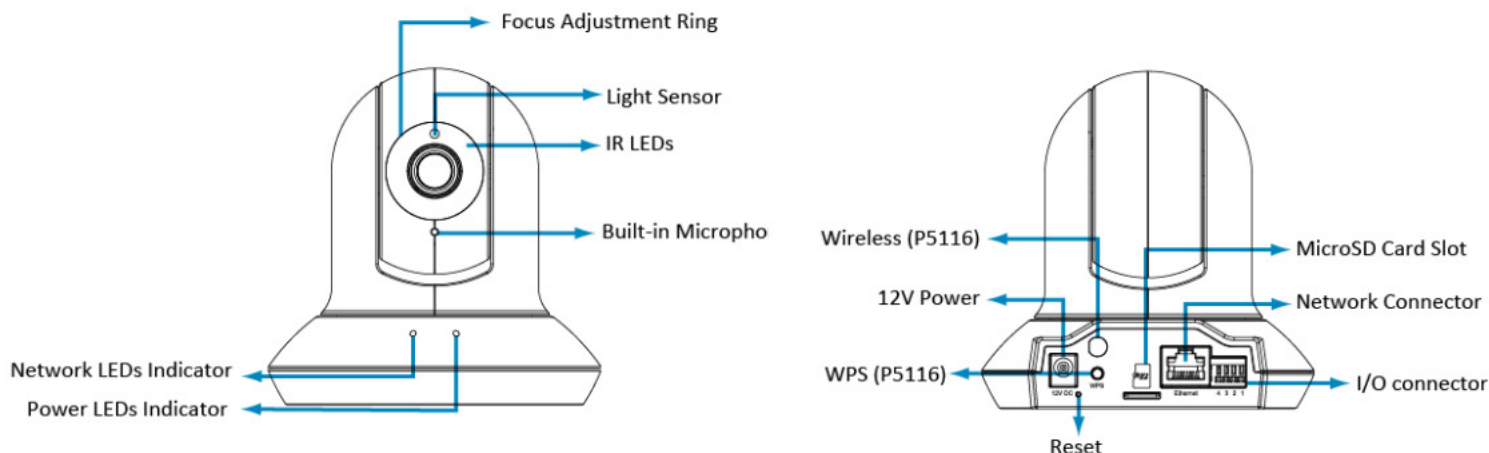
For more information, please check the User Manual available in the Software CD or you can download the latest software from <http://www.zavio.com>

## Package Contents

<b>Camera</b>	P5111 / P5116 / P5210 Day/Night Pan/Tilt IP Camera
<b>Quick Installation Guide</b>	Brief product information and quick installation
<b>Software CD</b>	IP Surveillance Software Intelligent IP Installer User Manuals Language Packs
<b>Component Pack</b>	Bracket, two packs of screws , Antenna (P5116 model)
<b>Adaptor</b>	12V DC, max 12W

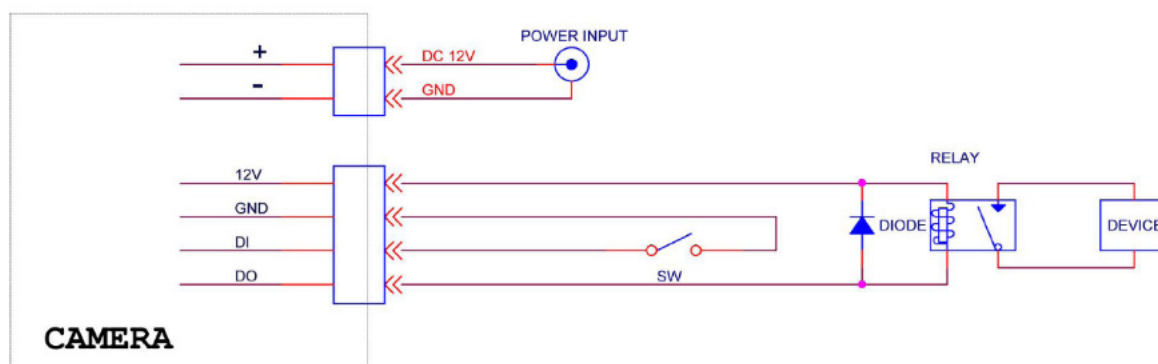


## Physical overview



- ❑ **Focus Adjustment Ring** - Adjust focus manually to achieve the best image quality
- ❑ **Infrared LEDs** - Infrared LEDs for night use up to 10m working distance
- ❑ **Wireless Antenna (for P5116)** - For connection of IEEE 802.11 b / g / n wireless network.
- ❑ **Built-In Microphone** - Built-In Microphone for one-way Audio
- ❑ **Network LED indicator** - Network LED will light up after connecting with network.
- ❑ **Power LED indicator** - Power LED will light up after completing the boot process.
- ❑ **Power Connector** - For connection of 12V DC input.
- ❑ **Reset** - When the device is empowered, press the Reset Button to reboot the device, or hold the Reset Button for 10 seconds to set the device settings back to factory default
- ❑ **WPS (for P5116)** –Enable the wireless function.
- ❑ **MicroSD Card** – For IP camera local storage.
- ❑ **Network Connector** - For connection to the Ethernet via RJ-45 standard with PoE
- ❑ **I / O Terminal Connector** - 1Input / 1Output to support External Alarm and Sensor used for motion detection, event triggering and alarm notification...etc.
- ❑ **DI / DO Terminal connector diagram** - Please refer the following illustration below for connection method:

DI/DO Diagram

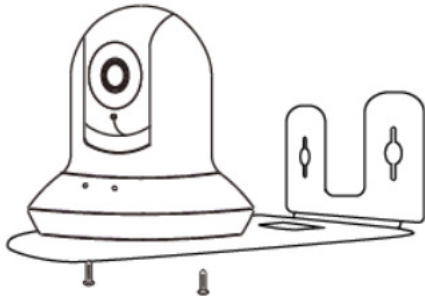


## **Install the hardware and connect all cables**

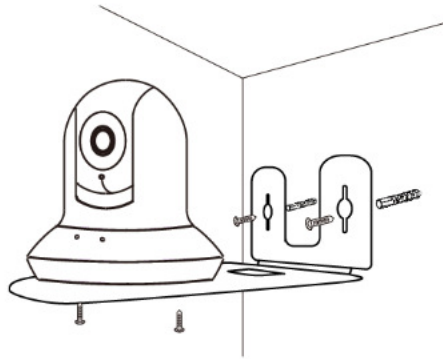
### **a. Wall mounting and Ceiling mounting**

#### **a 1. Wall mounting**

Fix the camera to the bracket with two supplied screws.

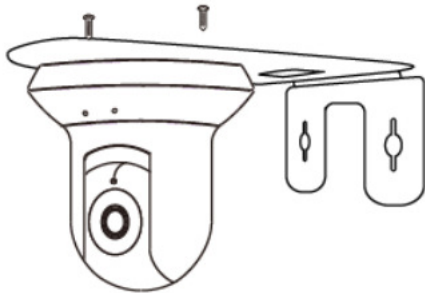


Fix the camera and bracket to the wall using two screw and plastic anchors.

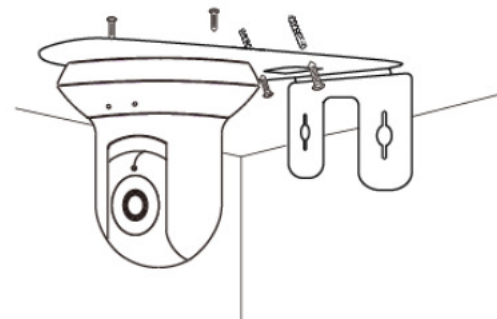


#### **a 2. Ceiling mounting**

Fix the camera to the bracket with two supplied screws.



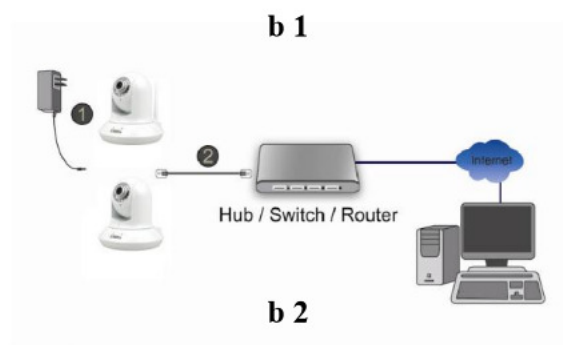
Fix the camera and bracket to the ceiling using two screw and plastic anchors.



### **b. Connect all cables**

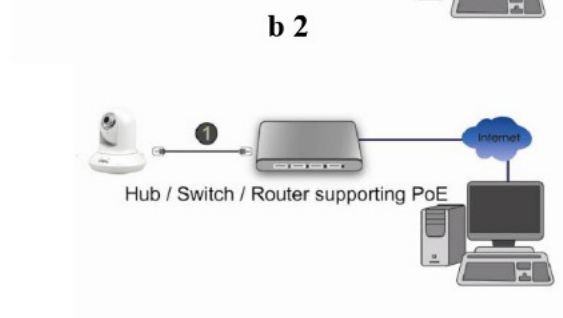
#### **b1. Without Power over Ethernet (PoE) connection (P5111/ P5116/ P5210)**

- Connect the power adaptor to the IP Camera.
- Using a standard RJ-45 network cable, connect the IP Camera to a normal Hub / Switch / Router.



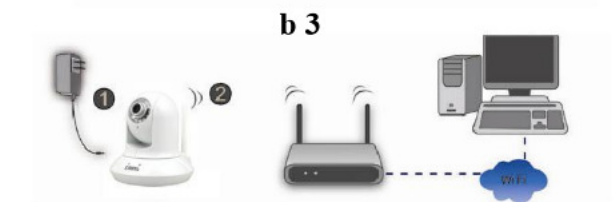
#### **b2. Power over Ethernet (PoE) (P5111/ P5210 Model )**

- Using a standard RJ-45 network cable, connect the IP Camera to a PoE-enabled Hub / Switch / Router.



#### **b3. Wireless connection (P5116 Model )**

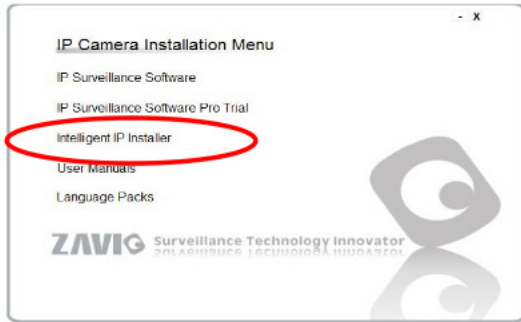
- Connect the power adaptor to IP Camera.
- Connect to Wi-Fi.



## Microsoft OS: Use the software CD to install Intelligent IP Installer

Power on your PC and insert the CD-ROM. The setup page will show up automatically. Please follow these steps to install the firmware.

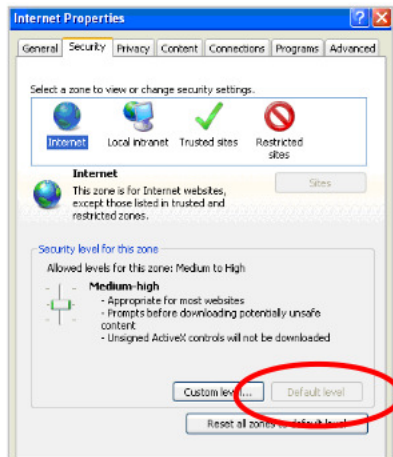
Select “**Intelligent IP Installer**” and follow the installation process to complete the installation.



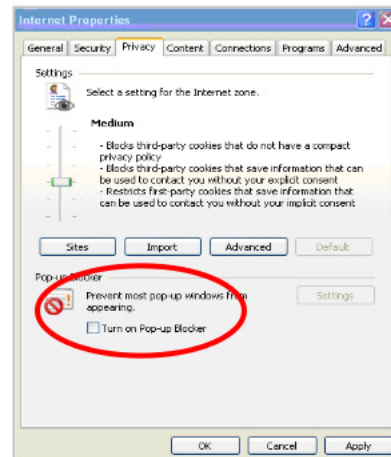
## Access the IP Camera using Intelligent IP Installer

1. Please check two settings before using Intelligent IP Installer .

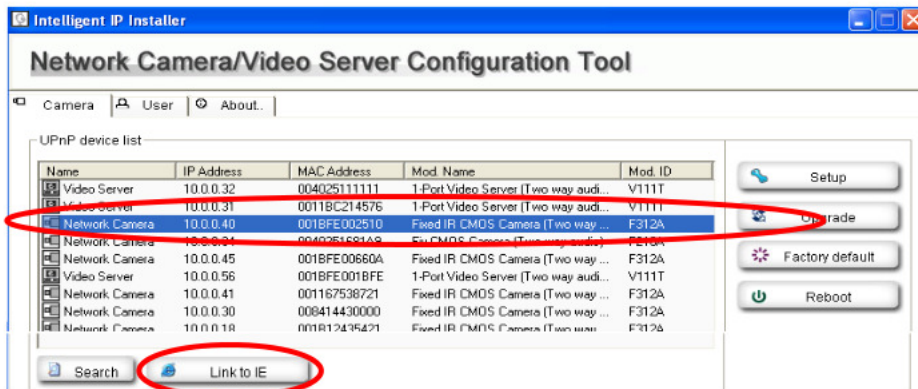
a. Browser's Internet Properties → Security  
→ **Default Level**



b. Browser's Internet Properties → Privacy  
→ **Uncheck Pop-up Blocker**

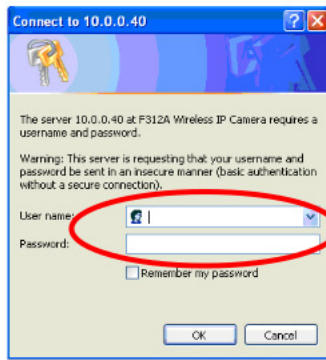


2. Click the Intelligent IP Installer Icon on your desktop. The main page will show up listing all active camera and video server devices. Select the relevant IP camera from the list and click **Link to IE**.

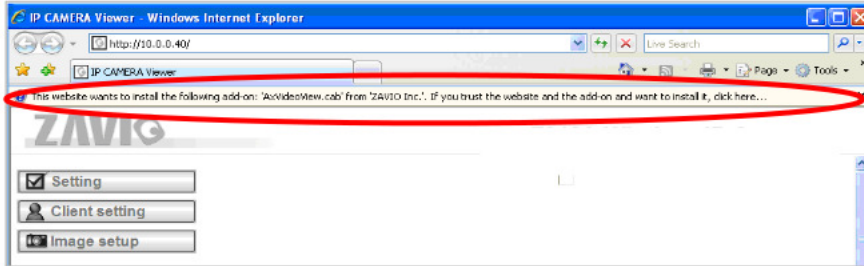




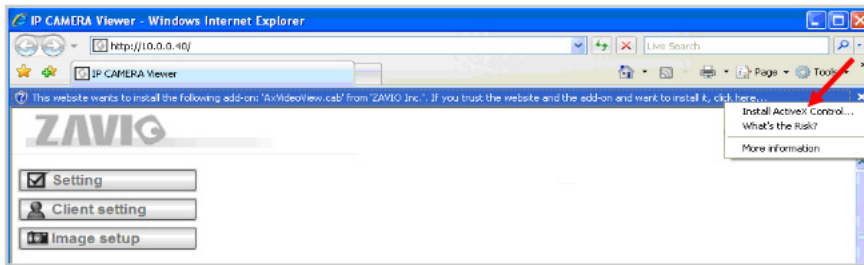
3. Enter your Username and Password to login to the IP Camera.  
(Default is admin / admin)



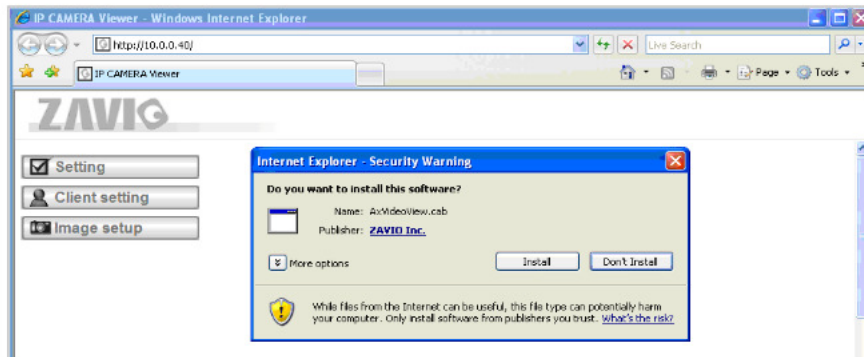
4. When accessing the IP Camera for the first time, a yellow information bar appears below the address bar:  
This website wants to install the following add-on: 'AxvideoView.cab from 'Zavio Inc'.



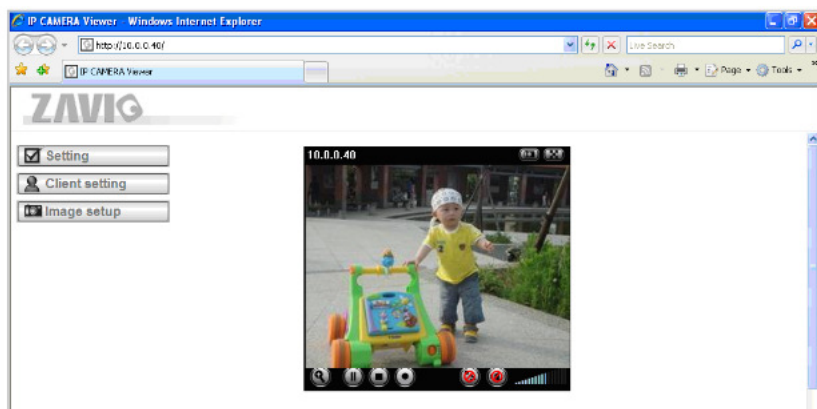
5. Click the information bar, and select **Install ActiveX control**.



6. Click **Install**.

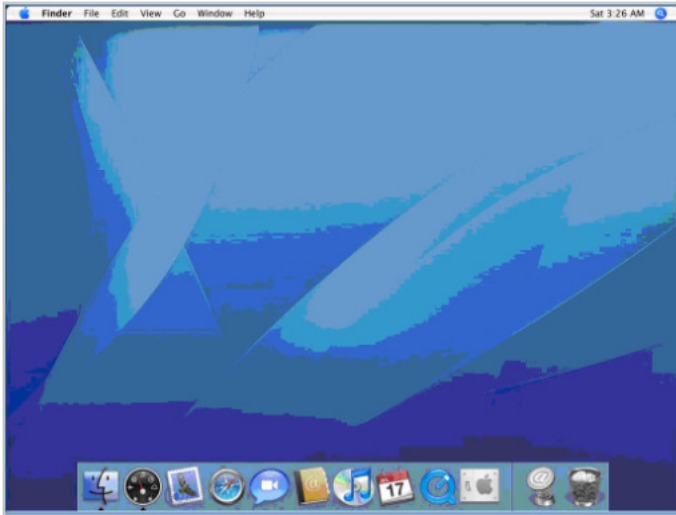


7. Live video displays in the centre of your web browser.

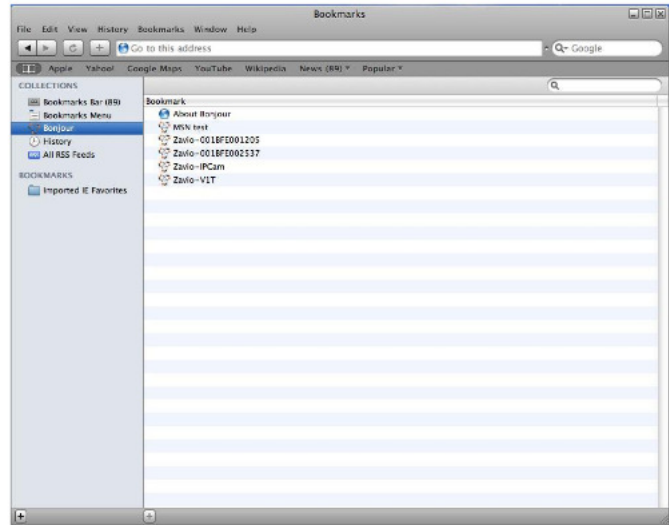


## Mac OS using Safari Browser

### 1. Select Safari icon



2. Click **Bonjour function** and select the camera you wish to access.



3. Enter name and password to login to the IP camera. (**Default is admin / admin**)



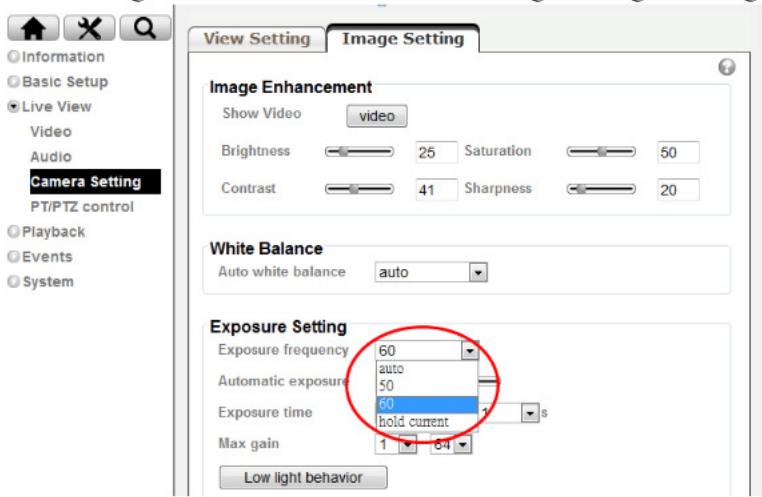
4. The monitor image will be displayed in your browser.



## Lighting environment setting

The default setting of lighting environment is **Auto**. However, you may also select 50 or 60 Hz upon the lighting environment of your country.

Go to “ Setting > Live View > Camera Setting > Image Setting” , select the environment setting you wish.

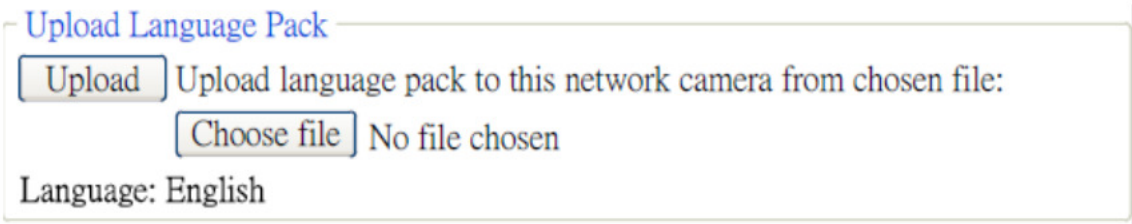


**Change the Web Interface into your preferred language**

Use the settings screen to set the language of the Web Interface.

Go to “Setting > System > Maintenance ”.

- 1. Insert Software CD into your CD-ROM.
- 2. Browse and select the preferred language from language pack in the Software CD and then click OK.
- 3. The web interface will change into your preferred language.

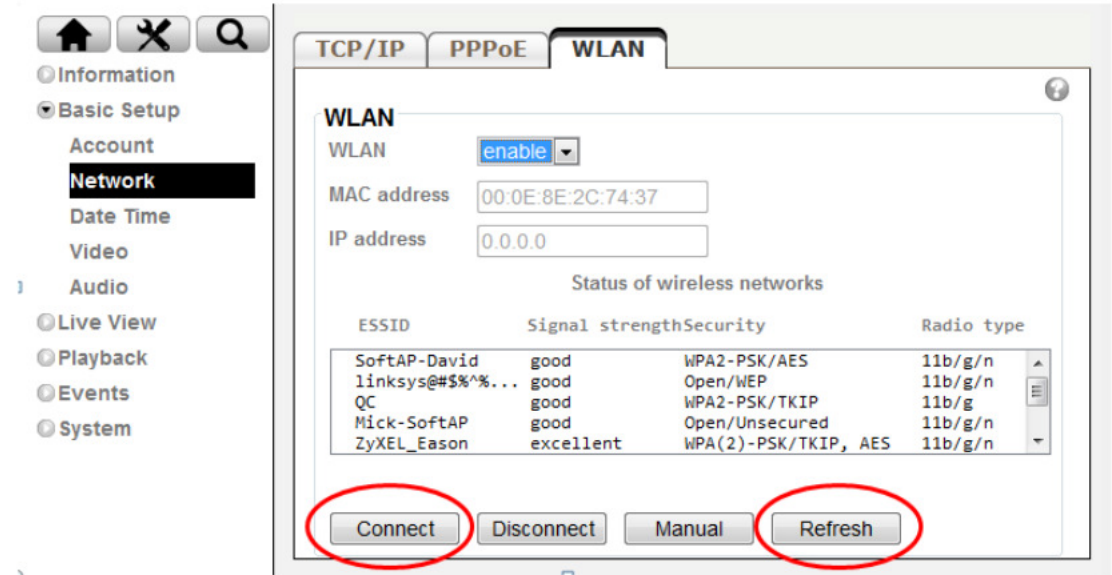


**Wireless Setting**

Power the IP Camera and connect an Ethernet network cable to the IP Camera’s LAN port, then insert the USB Wi-Fi dongle at the rear. Using Intelligent IP Installer and entering the camera’s setting page.

Please go to “Setting > Basic Setup > Network > WLAN”, set the wireless option to “Enable”

- 1. Click Refresh and choose the AP you wish to connect and click Connect.
- 2. Enter the password within the **Active transmit key** field if required.
- 3. Choose the option of Obtain an IP address automatically (DHCP) and Obtain DNS server address automatically.
- 4. Click “Save” to apply settings. The **Wireless IP address** appears in the **IP address** field.



**Note:** The wireless private IP address can be found in Intelligent IP Installer



Application of IP Camera

