



S5040/S5080

Quick Installation Guide

ZAVIG

Zavio S5040/S5080 Quick Installation Guide

Please follow the below instruction and the installation steps to set up your S5040/S5080 SNVR.

Package Contents. **See P.1**

Physical Overview. **See P.2**

LED Indicator Definition. **See P.2**

I/O Terminal Block Circuit. **See P.3**

Install the hardware and connect all cables. **See P.4**

First-time use – install wizard. **See P.6**

Appendix: Compatible HDD list. **See P.12**

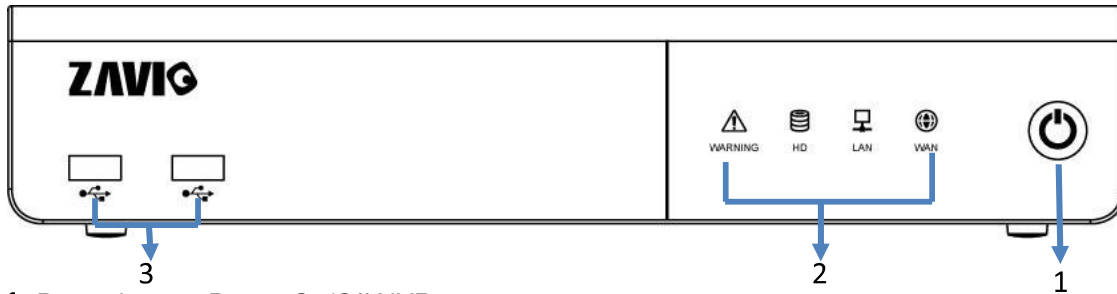
For more information, please check the User Manual available in the Software CD or you can download the latest software from <http://www.zavio.com>

Package Contents

Device	S5040/S5080 Standalone Network Video Recorder
Quick Installation Guide	Brief product information and quick installation
Software CD	CMS User manual
Accessory	Alarm terminal block x 4 Rubber foot x 4 HDD mounting screw x 4 VGA connector screw x 2
Adaptor & Power Cord	12V, 5A

Physical Overview

a. Front Panel



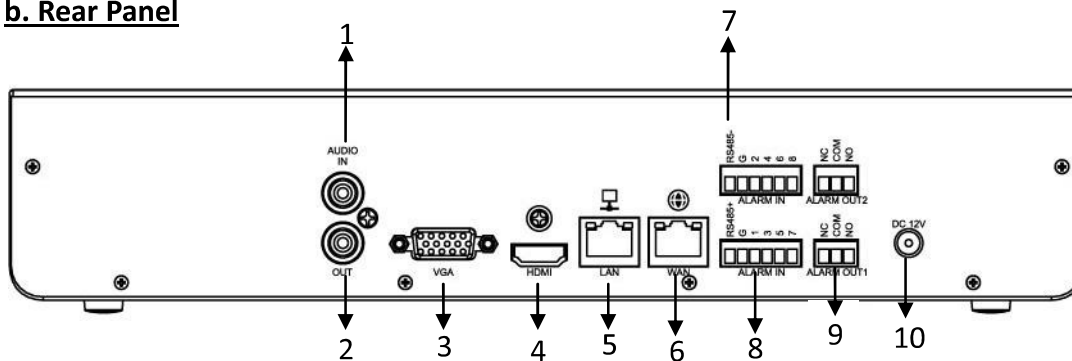
1. Power button: Power On/Off NVR

2. LED Indicator Definition

LED	Color	Indication
Power	Flash Blue	Booting up process
	Steady Blue	Booting up competition
Warning	Red	System exception alert is detected, such as disk full, disk error, no disk, network disconnect, illegal login, disk over temperature, fan fail, network fail, power loss and IP conflict.
HD	Blue	System is accessing hard disk
LAN	Blue	NVR is connecting to LAN port
WAN	Blue	NVR is connecting to WAN port

3. USB port : USB port for connecting devices, such as USB mouse or USB flash device.

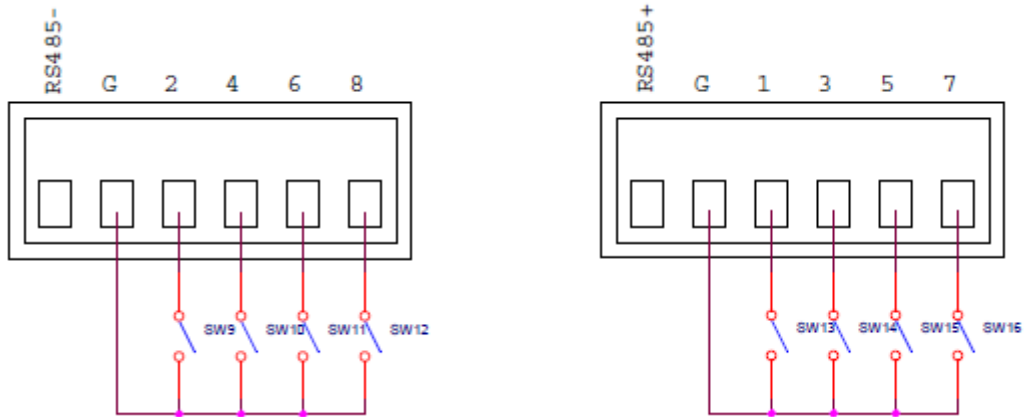
b. Rear Panel



1. Audio In: Connect the microphone or camera audio output to the audio input connector.
2. Audio Out: Connect a speaker or other audio output device to the audio output connector.
3. VGA: Connect a VGA monitor to the VGA output connector.
4. HDMI: Connect a HDMI monitor to the HDMI output connector.
5. LAN: Connect hub with IP cameras via RJ-45 network cable.
6. WAN: Connect NVR to Internet via a RJ-45 network cable.
7. RS485 socket: For RS485 PTZ control.
8. Alarm In: Connect to 4 or 8 alarm inputs to the alarm input connectors.
9. Alarm Out: N.C or N.O type alarm signal out.
10. Power: Plug the DC12V power source into the power socket.

I/O Terminal Block Circuit

The alarm input/output interface of the NVR is shown below.



Connect the alarm inputs

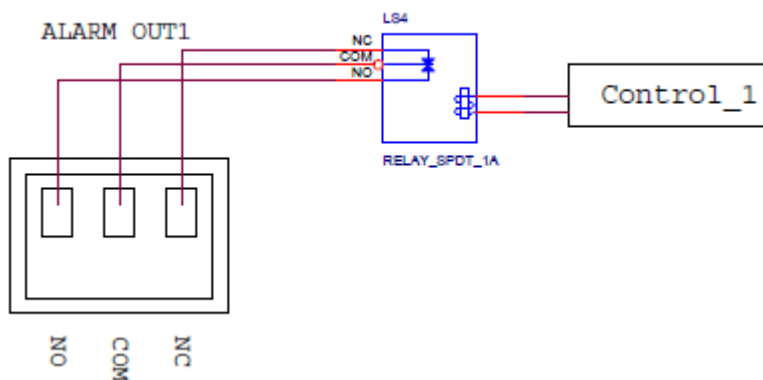
Configure the alarm inputs as N/O or N/C in the NVR UI system. Each (alarm) input line can be switched by a contact from external devices. Wire them as either Normally Open or Normally Closed.

Specifications

Alarm input impedance: Internal pull-up 10 K to +5 V

Input voltage range: 0 VDC minimum to 12 VDC maximum

Input voltage threshold: low voltage 0.5 V maximum, high voltage 2 V minimum



Connect the alarm outputs

Configure the alarm outputs as N/O or N/C in the NVR UI system. The 2 alarm output relays are responding to input alarms and triggers. Do not exceed 24 Vdc, 500 mA (continuous), or 10 VA on an alarm output relay's contacts.

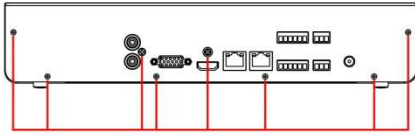
Specifications

Switching current (resistive): 500 mA maximum

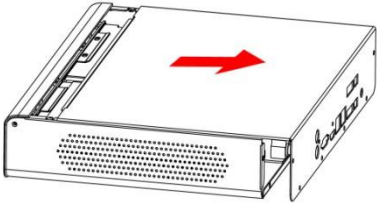
Switching voltage (resistive): 24 VDC maximum

Cable cross section: AWG 26-16 (0.13-1.5 mm²)

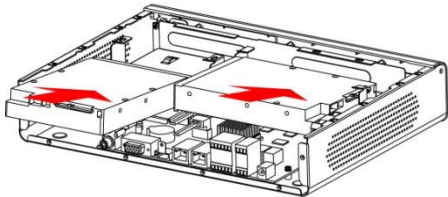
Install the HDD and connect all cables



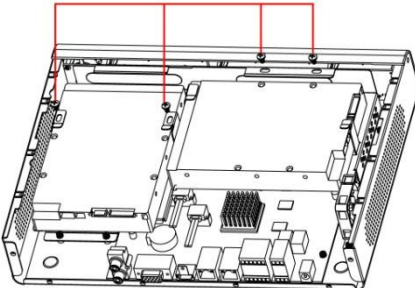
1. Remove all the screws on the rear panel.



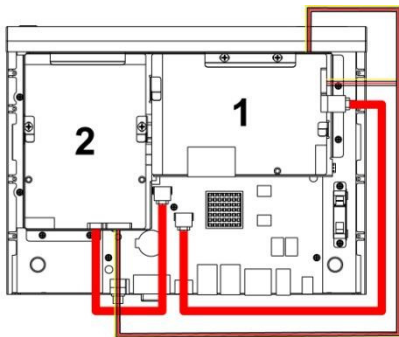
2. Slide out the top cover.



3. Slide in HDD.

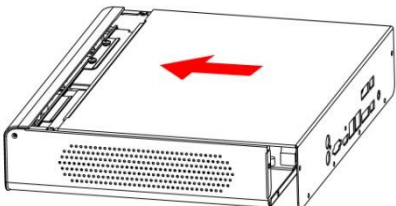


4. Use the screws attached in accessory to mount HDD with the bracket.

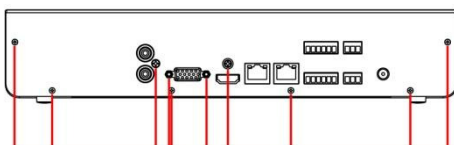


5. Connect SATA connection cable & SATA power cable to HDD.

For easier installing HDD, you may cut off the cable ties and connect SATA cables to the HDD number 1 first and then connect to the HDD number 2.



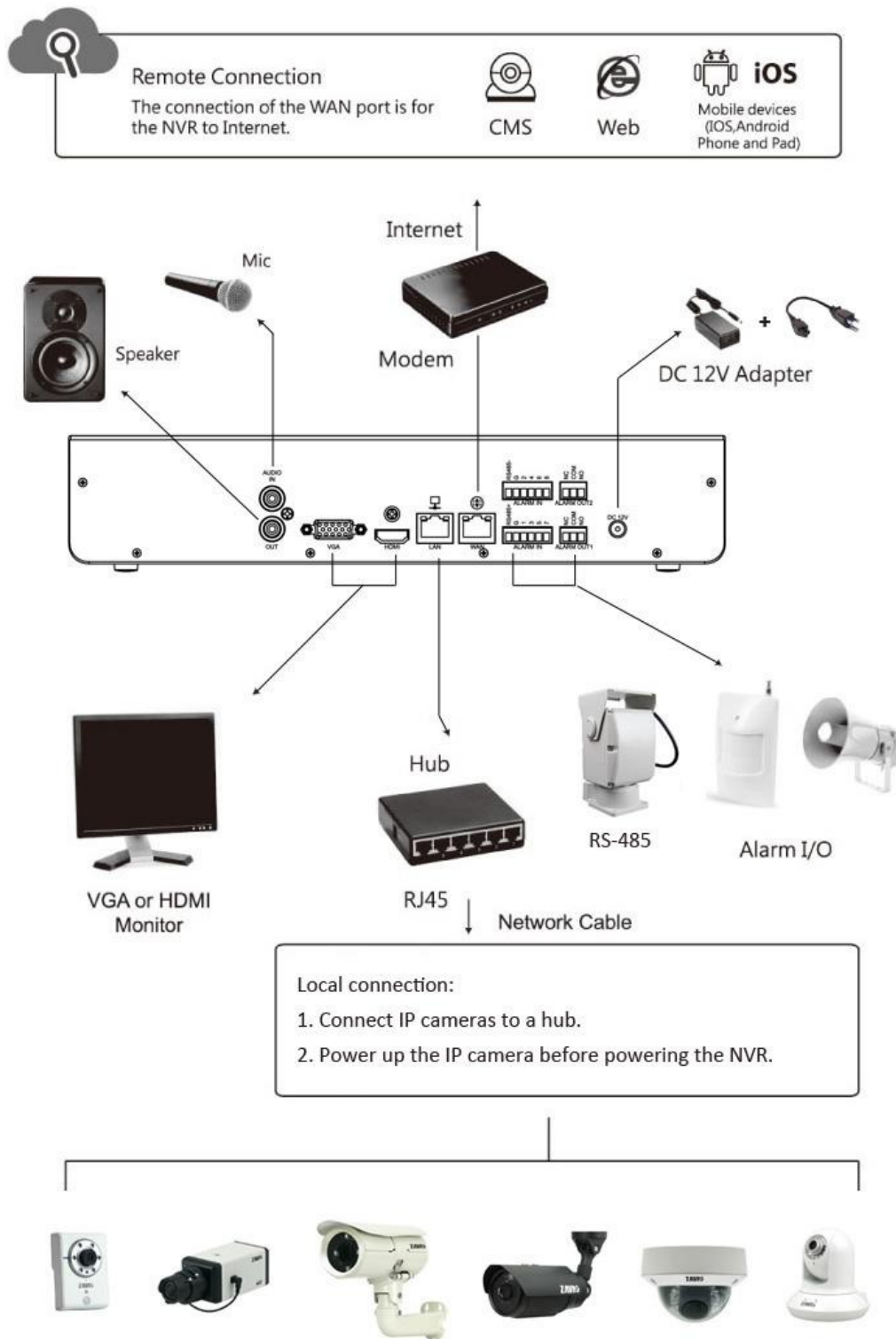
6. Slide in the top cover.



7. Fasten screws on the rear panel.

VGA screws are attached in the accessory. Please fasten VGA screws before connecting the monitor to the VGA output

Connections:



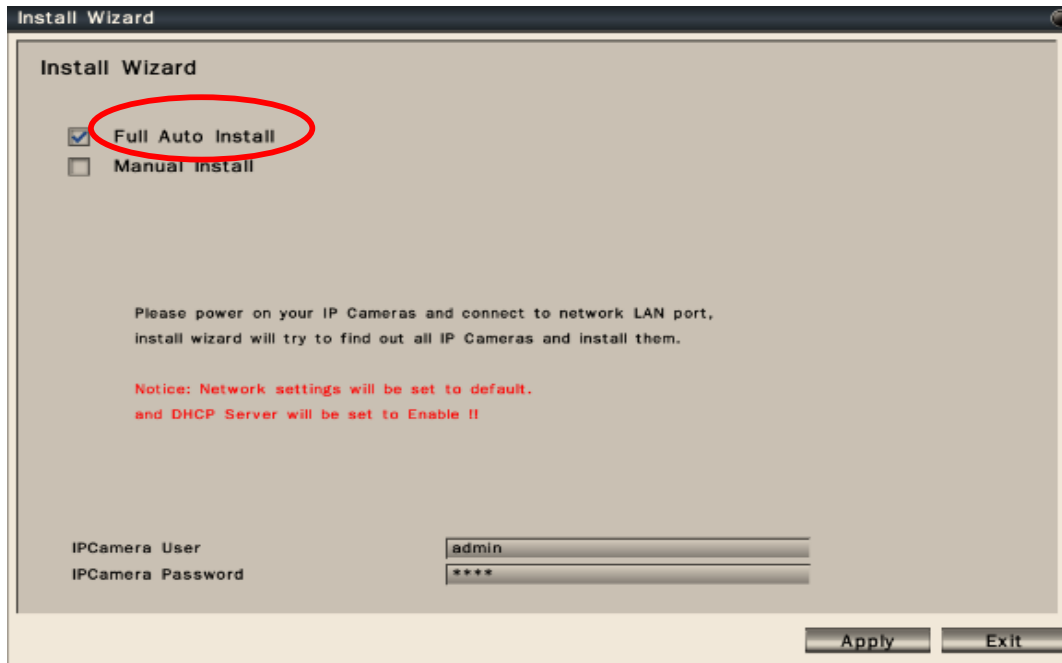
Note:

1. Monitor: Supporting display mode from 1024x768 up to 1920x1080
2. RS-485: Connect a pan/tilt/zoom control unit to the RS-485 port through the supplied terminal block.

First-time use – install wizard

When the first time connect IP cameras to the NVR, the NVR will pop up install wizard window.

Full Auto Install Mode



Click “Full Auto Install” and then the NVR will automatically configure IP address of a camera connected by LAN. The NVR will then detect the IP camera and display image on screen.

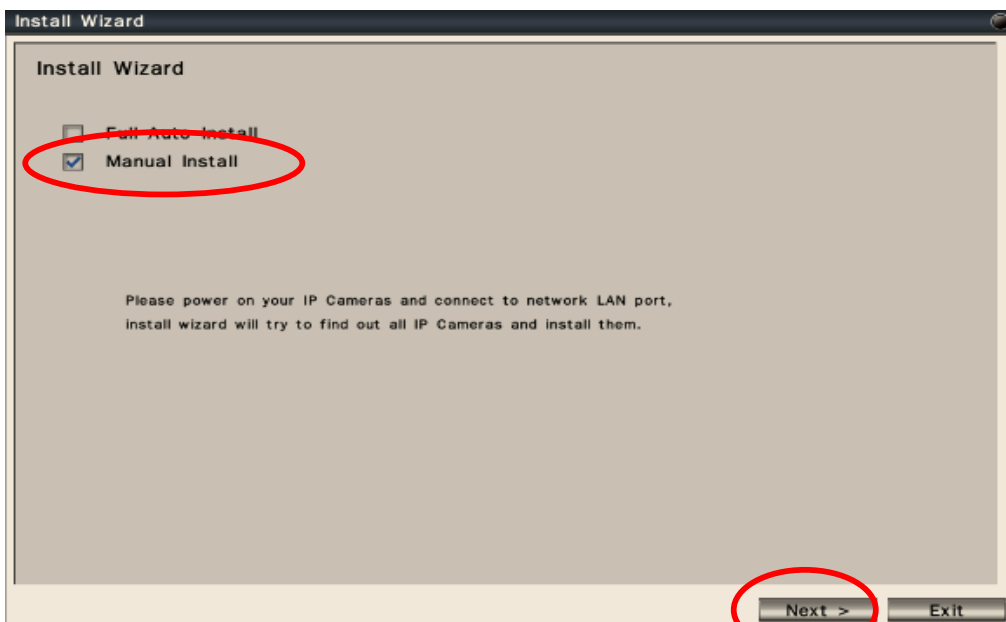
Note:

1. This mode is suitable when the LAN is connected to a hub.
2. User also can go to Configuration→System→Device→Install Wizard, to bring up the Install Wizard. If the NVR does not configure the IP camera automatically, please recheck the conditions as listed above and rerun the Install Wizard when it's ready.

Manual Install Mode

If user would like to add IP camera manually in wizard, please follow the below steps.

Step 1. Click “Manual Install” and press “Next’ to the next page.



Step 2. Device setting:

Install Wizard

Device Settings

Device Name: S5080

Language: English

Enable Authentication: OFF ON

Keep Record Datas in Hard Disks: OFF ON

< Back Next > Exit

- ☐ Device name: User can change the device name.
- ☐ Language: User can select the desired display language.
- ☐ Enable authentication: User can select enable or not.
- ☐ Keep recorded data in hard disk: User can select to keep or not.
- ☐ After finish the device setting, please click “Next” to the next page.

Step 3. User can configure network settings for WAN and LAN.

Install Wizard

Network Settings

WAN

Network Type: Disable DHCP Fixed IP PPPoE

IP Address: 192.168.001.148

Subnet Mask: 255.255.255.000

Default Gateway: 192.168.001.002

Primary DNS: 168.095.192.001

Secondary DNS: 168.095.001.001

LAN

Network Type: Disable DHCP Fixed IP

IP Address: 192.168.003.010

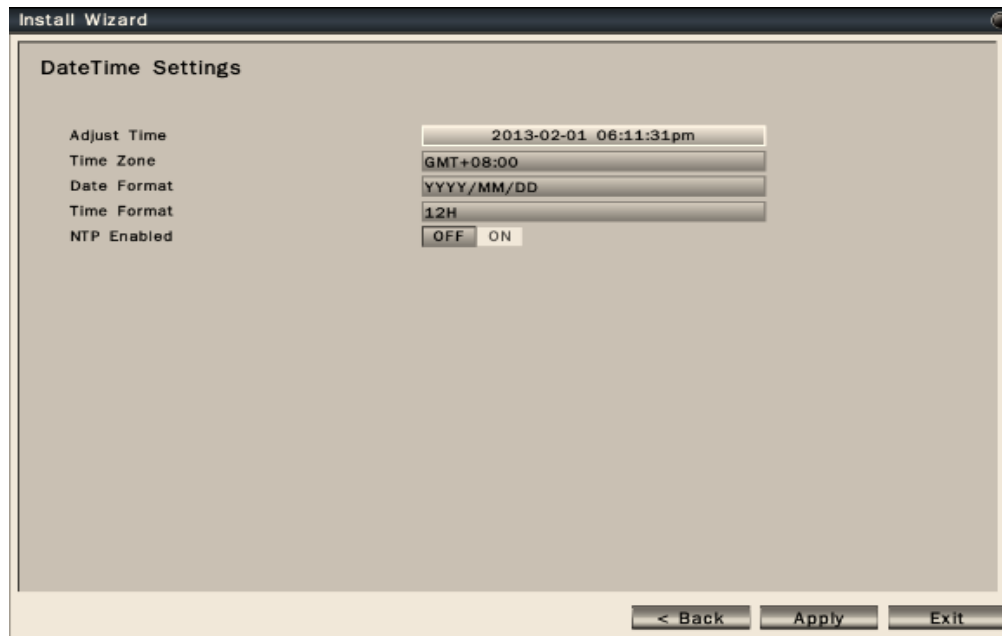
Subnet Mask: 255.255.255.000

Default Gateway: 192.168.003.001

< Back Next > Exit

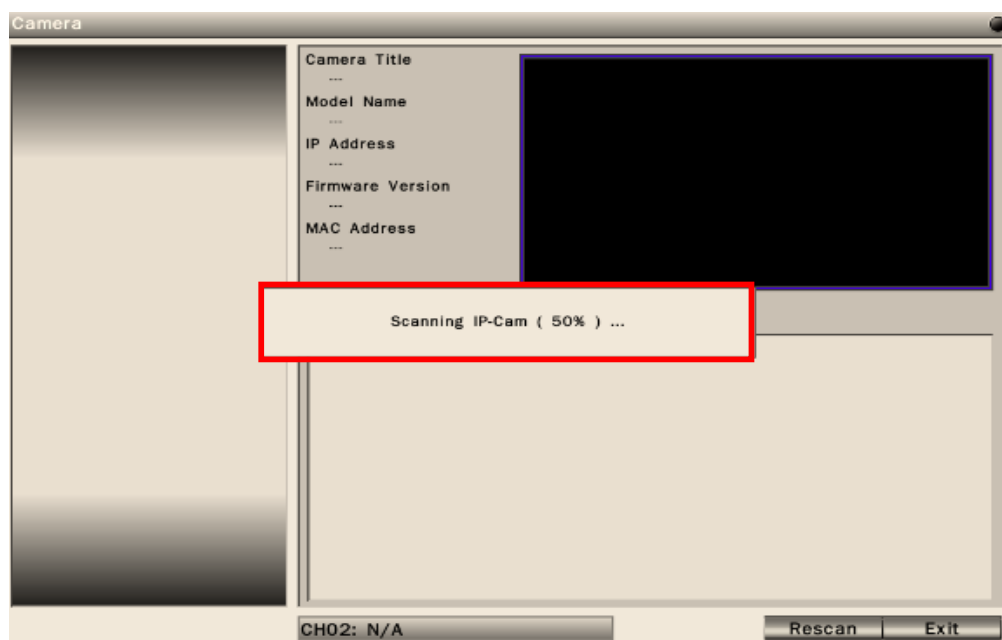
- ☐ The connection of the LAN port is for IP cameras. The connection of the WAN port is for the NVR to Internet.
- ☐ The NVR provides the options for user to access to the NVR through DHCP, Fixed IP or PPPoE. Select the option user would like to use to enable and configure the settings.
- ☐ When the LAN port of the NVR is connected to IP cameras via a hub, user can choose DHCP or Fixed IP to enable and configure the settings.
- ☐ After finish the network settings, please press “Next” to the next page.


Step 4. User can configure Date/Time settings of the NVR. After finish the Date/Time settings, please press “Apply” to save user’s changes and proceed to the next step.

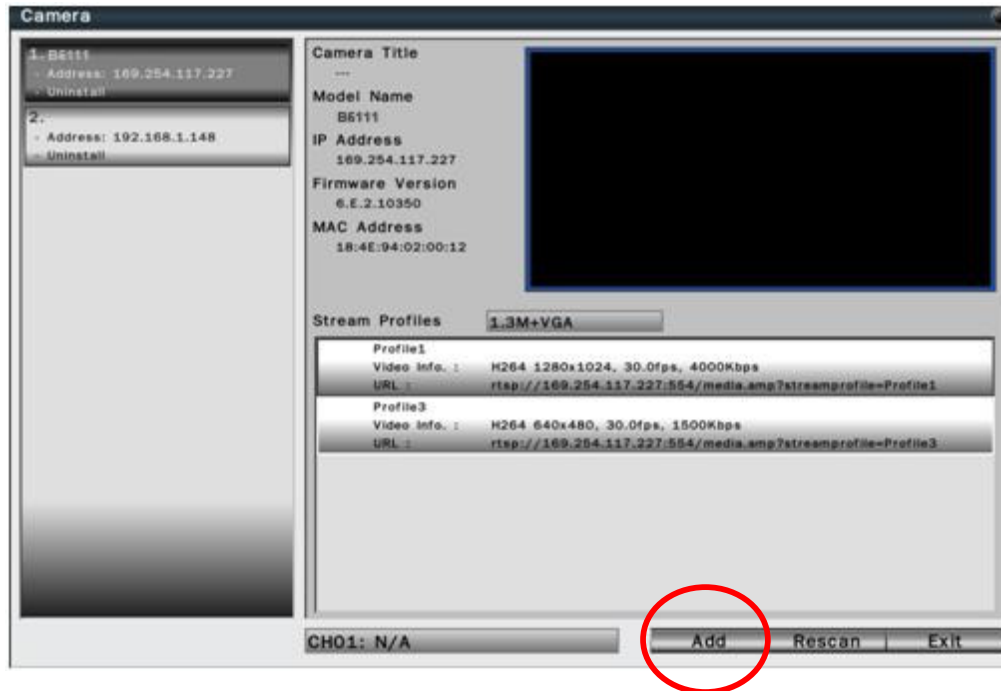


- ☐ Adjust Time : Click on the column and the Calendar will pop up on screen for user to adjust the system date and time. Click Apply to enable the settings.
- ☐ Time Zone: Set the time zone that the NVR adjusts to when updating from the time server.
- ☐ Date Format: Select date format from DD/MM/YYYY, MM/DD/YYYY or YYYY/MM/DD.
- ☐ Time Format: Select time format between 12 Hours and 24 Hours.
- ☐ NTP On/Off: To enable or disable NTP synchronization.

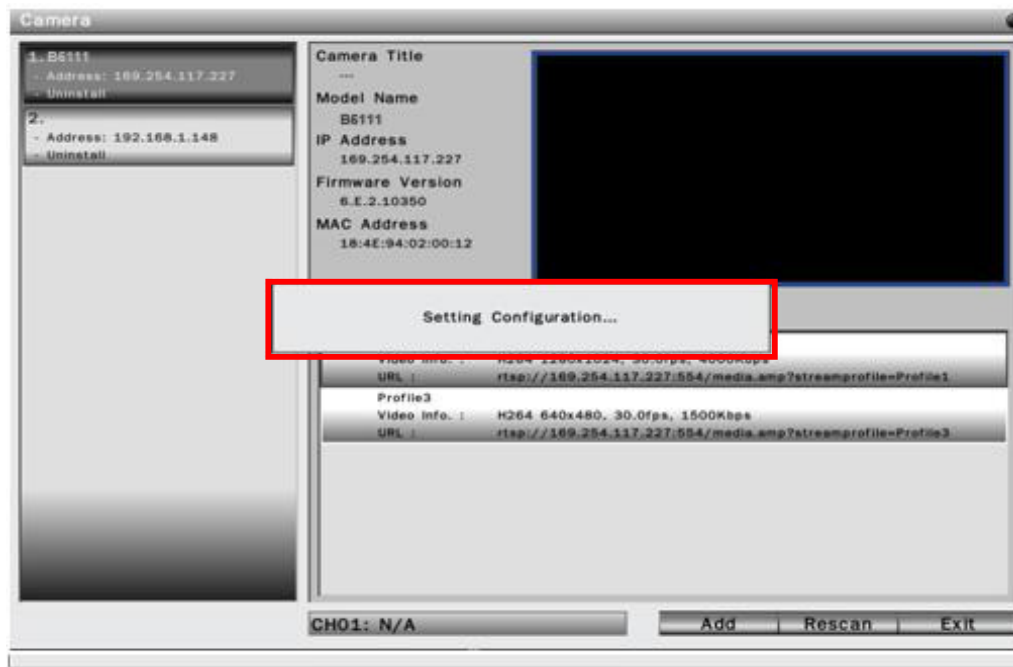
Step 5. After press “Apply” button, the NVR will start to scan the LAN environment to search for the specific IP cameras.



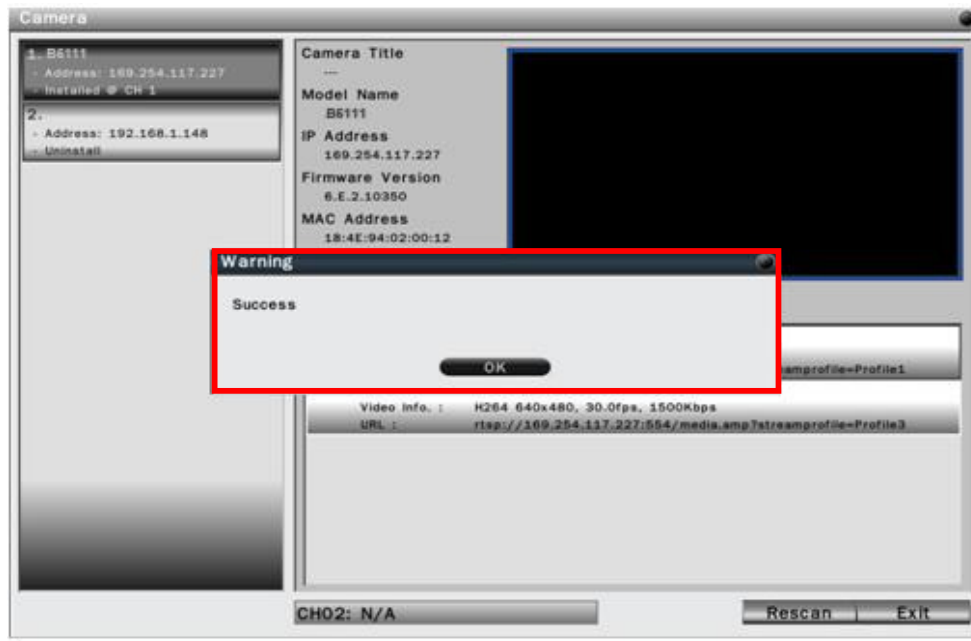
Step 6. After NVR gets the specific IP cameras, it will display the IP camera list. User can click “Add” button  to add IP camera into desired channel.



Step 7. After adding IP cameras into NVR, NVR will start to configure the parameters of the IP cameras.



Step 8. When NVR finish the configuration of the IP cameras, it will pop up the success message and IP camera also successfully add into NVR.



Appendix: Compatible HDD list

HDD Manufacturer	Model	Capacity
Seagate	SV35	3TB
Seagate	SV35	2TB
Seagate	SV35	1TB
WD	AV-GP	4TB
WD	AV-GP	3TB
WD	AV-GP	2TB
WD	AV-GP	1TB
WD	WD4000FYYZ	4TB
WD	WD4000F9YZ	4TB
WD	WD3000F9YZ	3TB
WD	WD2000F9YZ	2TB
WD	WD30EURX	3TB
TOSHIBA	DT01ACA300	3TB
TOSHIBA	DT01ACA200	2TB
TOSHIBA	DT01ACA100	1TB
TOSHIBA	DT01ACA050	500GB
TOSHIBA	DT01ABA300V	3TB

Memo

This image shows a full page of white paper with horizontal dashed lines, typical of primary school writing paper. The lines are evenly spaced and run across the width of the page. There are no margins, text, or other markings on the paper.

Memo

This image shows a full page of white paper with horizontal dashed lines, typical of primary school writing paper. The lines are evenly spaced and run across the width of the page. There are no margins, text, or other markings on the paper.

Memo

[illegible]



